

Converting Colors

Hex(D4ABAC)

Have a look what the booklet for
Hex(D4ABAC) contains.

Hex(D4ABAC)	3
<i>Conversions</i>	4
<i>Details</i>	6
<i>Harmonies</i>	11
<i>Previews</i>	23
<i>Color Blindness Simulation</i>	26
<i>CSS Examples</i>	29

Color

Hex(D4ABAC)

Conversions

Conversions Part 1

Format	Color
Hex	D4ABAC
RGB	212, 171, 172
RGB Percent	83%, 67%, 67%
CMY	0.1686, 0.3294, 0.3255
CMYK	0.00, 0.19, 0.19, 0.17
HSL	359°, 32%, 75%
HSV	359°, 19%, 83%
XYZ	49.1607, 46.1014, 45.3371
YIQ	183.3730, 24.1150, 9.0030

Conversions

Conversions Part 2

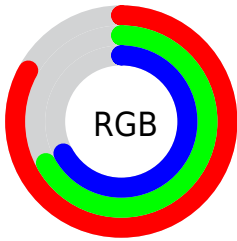
Format	Color
R _Y B	212, 171, 172
Decimal	13937580
CIE Lab	73.61, 15.10, 5.16
CIE LCh	74, 15.956, 18.852
Yxy	46.1014, 0.3497, 0.3279
Android (android.graphics.Color)	4292127660 (0xFFD4ABAC)
YUV	183.3730, -5.6069, 25.1059
Hunter-Lab	67.8980, 10.4190, 7.9393

Details

The Hex color **D4ABAC** is a light color, and the websafe version is hex **CC9999**. A complement of this color would be **ABD4D3**, and the grayscale version is **B7B7B7**.

A 20% lighter version of the original color is **FFE2E3**, and **9D7778** is the 20% darker color. If you saturate the color by 10%, you get **D49697**, and if you desaturate by 10%, it is **D4C0C1**.

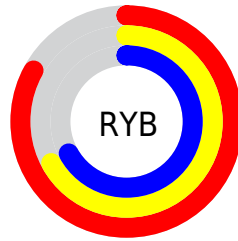
Distribution



Red (83%)

Green (67%)

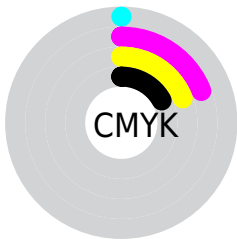
Blue (67%)



Red (83%)

Yellow (67%)

Blue (67%)

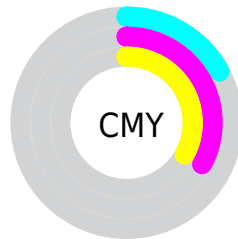


Cyan (0%)

Magenta (19%)

Yellow (19%)

Black (17%)



Cyan (17%)

Magenta (33%)

Yellow (33%)

Brightness & Saturation Gradients

These gradients show how the Hex color D4ABAC changes by changing the brightness by 10 percent. The first figure shows a shift by +10% for each color and the second figure -10%.

Similar to the brightness gradients but the following saturation gradients show a change of the Hex color D4ABAC by changing the saturation by 10% instead.

 D4ABAC

 D4ABAC

FFFFFF

 B89091

 FFE2E3

 9D7778

 825E5F

 694647

 502F31

 381A1C

 240101

 000000

 D4ABAC

 D4ABAC

 D49697

 D4C0C1

 D48183

 D4D5D5

 D46B6E

 D4EBEA

 D45659

 D4FFFF

 D44145

 D42C30

 D4171B

 D40107

 D40005

Harmonies

Analogous

The Analogous color harmony consists of three colors that are next to each other on the color wheel.



CFABBB



D4ABAC



D0AE9F

Triad

The Triadic color harmony groups three colors that are evenly spaced from another and form a triangle on the color wheel.



D4ABAC



A6BBA1



9EB8D1

Complementary

The Complementary color scheme is a pair of colors which are on the opposite of each other on the color wheel.



D4ABAC



ABD4D3

Split Complementary

Split-complementary colors differ from the complementary color scheme. The scheme consists of three colors, the original color and two neighbors of the complement color.



91BCCA



D4ABAC



97BDAF

Square

The Square scheme is like the rectangle color scheme, but the four colors are evenly spaced on the color wheel.



D4ABAC



B7B799



8FBDBE



B1B3D0

Rectangle

The Rectangle color scheme consists of four colors that form a rectangle on the color wheel.



D4ABAC



CAB09A



8FBDBE



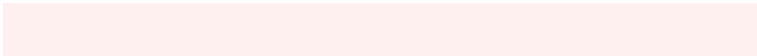
99B9D0

Sweetspot

The Sweet Spot groups the original color and five complimentary colors.



D4ABAC



FFF0F0



D3ABD4



807777



000000



808080

Same Dimension

The Same Dimension uses a secret algorithm to generate beautiful new colors.



D4ABAC



FFC4C6



D4BEAB



6B6061



AB0004



2B0001

Inverse Universe

The Inverse Universe completely reimagines the original color for something new.



D4ABAC



FFC4C6



ABC1D4



6B6061



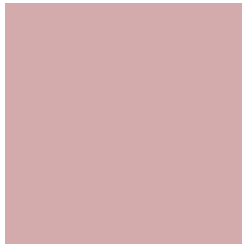
AB0004



2B0001

Previews

White Background



This preview shows how the Hex color D4ABAC looks on a white background.

Color Contrast Check

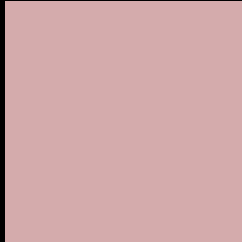
Large Text (above 18pt) WCAG AA × Fail

Any Text WCAG AA × Fail

Large Text (above 18pt) WCAG AAA × Fail

Any Text WCAG AAA × Fail

Black Background



This preview shows how the Hex color D4ABAC looks on a black background.

Color Contrast Check

Large Text (above 18pt) WCAG AA ✓ Pass

Any Text WCAG AA ✓ Pass

Large Text (above 18pt) WCAG AAA ✓ Pass

Any Text WCAG AAA ✓ Pass

If you want to check with other color combinations, try the [Color Contrast Checker](#).

Hex D4ABAC Background



This preview shows how black text looks on a background with the Hex color D4ABAC.

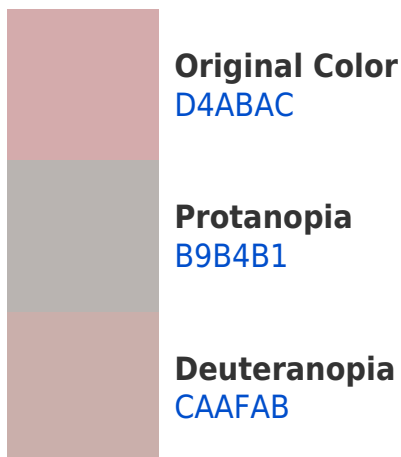


This preview shows how white text looks on a background with the Hex color D4ABAC.

Color Blindness Simulation

Color vision deficiency is a very complex topic, and I could not describe the different causes any better than Wikipedia does, so if you want to learn more, you should check out their [article about color blindness](#).

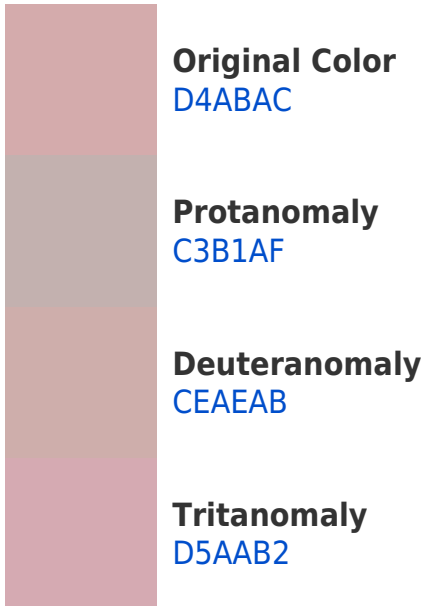
Dichromacy



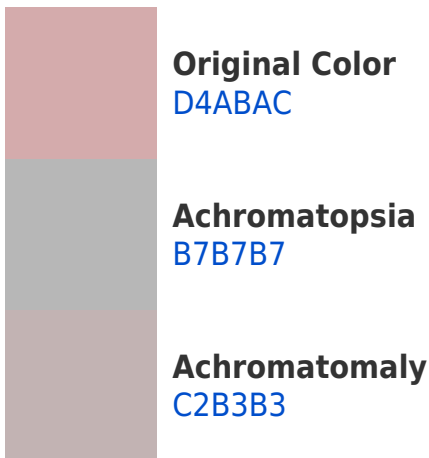


Tritanopia
D5A9B6

Trichromacy



Monochromacy



CSS Examples

Text

The CSS property to change the color of the text to Hex D4ABAC is called "color". The color property can be set on classes, ids or directly on the HTML element.

This example shows how text in the color #D4ABAC looks like.

```
.text, #text, p{  
    color:#D4ABAC  
}
```

If you want to add a text shadow in that color use the text-shadow property, you can generate a text shadow directly with our [CSS Text Shadow Generator](#).

Here you see how black text with a 4 pixel #D4ABAC colored shadow looks like.

```
.shadow{ text-shadow: 4px 4px 2px #D4ABAC
}
```

Border

The CSS property to change the border of an element to Hex D4ABAC is called "border". The border property can be set on classes, ids or directly on the HTML element.

This example shows the color as border, it can be applied via the CSS property "border" or "border-color".

```
.border, #border, table{ border:4px solid
#D4ABAC }
```

If only the border color should be changed use the property `border-color`.

```
.border{ border-color:#D4ABAC }
```

If you want to add a box shadow in that color use:

Here you see how a box with a 4 pixel #D4ABAC colored shadow looks like.

```
.boxshadow{ -moz-box-shadow:4px 4px 4px  
4px #D4ABAC; -webkit-box-shadow:4px 4px  
4px 4px #D4ABAC; box-shadow:4px 4px 4px  
4px #D4ABAC }
```

Background

The CSS property to change the background color of an element to Hex D4ABAC is called "background". The background property can be set on classes, ids or directly on the HTML element.

```
.background, #background, body{  
background:#D4ABAC }
```

If only the background color should be changed can be used:

```
.background{ background-color:#D4ABAC }
```

This example shows the color as background, it is applied via the CSS property "background".

To optimize and compress your CSS code, you can use our [online CSS compressor and optimizer](#) based on csstidy. If you want to create a linear or radial gradient as background or border, check our [CSS Gradient Generator](#).

Hey! You found this booklet interesting? Support Converting Colors with the new Membership Option!

The pro membership hides all ads, plus gives you double the colors in the color bucket, and more awesome pro features!

[Learn more, Memberships starting at \\$2.50/m!](#)

**Follow me
on Twitter!**

@ConvertingColor