

Converting Colors

Hex(D4AC99)

Have a look what the booklet for
Hex(D4AC99) contains.

Hex(D4AC99)	3
<i>Conversions</i>	4
<i>Details</i>	6
<i>Harmonies</i>	11
<i>Previews</i>	23
<i>Color Blindness Simulation</i>	26
<i>CSS Examples</i>	29

Color

Hex(D4AC99)

Conversions

Conversions Part 1

Format	Color
Hex	D4AC99
RGB	212, 172, 153
RGB Percent	83%, 67%, 60%
CMY	0.1686, 0.3255, 0.4000
CMYK	0.00, 0.19, 0.28, 0.17
HSL	19°, 41%, 72%
HSV	19°, 28%, 83%
XYZ	47.6537, 45.8020, 36.4660
YIQ	181.7940, 29.9390, 2.5710

Conversions

Conversions Part 2

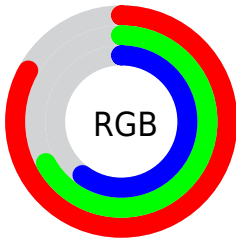
Format	Color
R_{YB}	212, 181, 153
Decimal	13937817
CIE _{Lab}	73.42, 11.79, 15.28
CIE _{LCh}	73, 19.300, 52.329
Yxy	45.8020, 0.3668, 0.3525
Android (android.graphics.Color)	4292127897 (0xFFD4AC99)
YUV	181.7940, -14.1954, 26.4907
Hunter-Lab	67.6772, 7.2525, 15.4272

Details

The Hex color **D4AC99** is a light color, and the websafe version is hex **CC9999**. A complement of this color would be **99C1D4**, and the grayscale version is **B6B6B6**.

A 20% lighter version of the original color is **FFE3CF**, and **9C7866** is the 20% darker color. If you saturate the color by 10%, you get **D49E84**, and if you desaturate by 10%, it is **D4BAAE**.

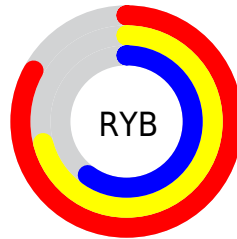
Distribution



Red (83%)

Green (67%)

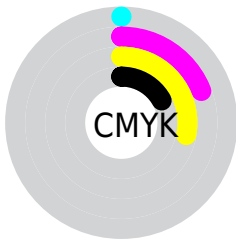
Blue (60%)



Red (83%)

Yellow (71%)

Blue (60%)

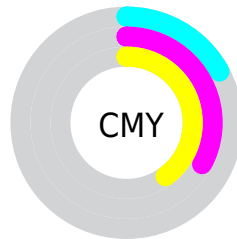


Cyan (0%)

Magenta (19%)

Yellow (28%)

Black (17%)



Cyan (17%)

Magenta (33%)

Yellow (40%)

Brightness & Saturation Gradients

These gradients show how the Hex color D4AC99 changes by changing the brightness by 10 percent. The first figure shows a shift by +10% for each color and the second figure -10%.

Similar to the brightness gradients but the following saturation gradients show a change of the Hex color D4AC99 by changing the saturation by 10% instead.

 D4AC99

 D4AC99

FFFFFF

 B8917F

 FFE3CF

 9C7866

 FFFFEC

 825F4E

 684737

 4F3121

 371B0C

 210300

 000000

 D4AC99

 D4AC99

 D49E84

 D4BAAE

 D48F6F

 D4C9C3

 D48159

 D4D7D9

 D47344

 D4E5EE

 D4642F

 D4F4FF

 D4561A

 D4FFFF

 D44705

 D44400

Harmonies

Analogous

The Analogous color harmony consists of three colors that are next to each other on the color wheel.



D9A8A8



D4AC99



C7B292

Triad

The Triadic color harmony groups three colors that are evenly spaced from another and form a triangle on the color wheel.



D4AC99



8EBEAF



B2B1D5

Complementary

The Complementary color scheme is a pair of colors which are on the opposite of each other on the color wheel.



D4AC99



99C1D4

Split Complementary

Split-complementary colors differ from the complementary color scheme. The scheme consists of three colors, the original color and two neighbors of the complement color.



9AB7D7



D4AC99



85BEC1

Square

The Square scheme is like the rectangle color scheme, but the four colors are evenly spaced on the color wheel.



D4AC99



A0BC9E



89BCD0



C7ACCA

Rectangle

The Rectangle color scheme consists of four colors that form a rectangle on the color wheel.



D4AC99



BAB592



89BCD0



AAB3D7

Sweetspot

The Sweet Spot groups the original color and five complimentary colors.



D4AC99



FFF1EB



D499C1



807773



000000



808080

Same Dimension

The Same Dimension uses a secret algorithm to generate beautiful new colors.



D4AC99



FFC6AB



D4C999



6B6460



AB3700



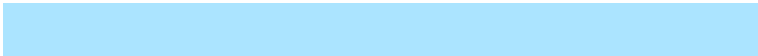
2B0E00

Inverse Universe

The Inverse Universe completely reimagines the original color for something new.



99C1D4



ABE4FF



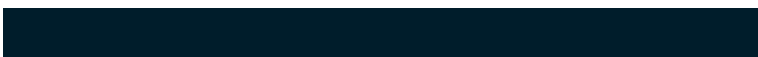
99A4D4



60686B



0074AB



001D2B

Previews

White Background



This preview shows how the Hex color D4AC99 looks on a white background.

Color Contrast Check

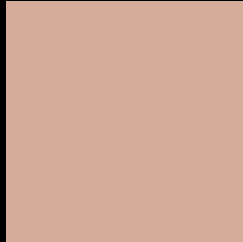
Large Text (above 18pt) WCAG AA × Fail

Any Text WCAG AA × Fail

Large Text (above 18pt) WCAG AAA × Fail

Any Text WCAG AAA × Fail

Black Background



This preview shows how the Hex color D4AC99 looks on a black background.

Color Contrast Check

Large Text (above 18pt) WCAG AA ✓ Pass

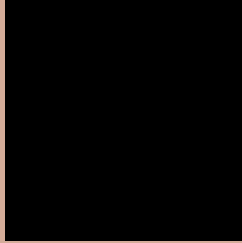
Any Text WCAG AA ✓ Pass

Large Text (above 18pt) WCAG AAA ✓ Pass

Any Text WCAG AAA ✓ Pass

If you want to check with other color combinations, try the [Color Contrast Checker](#).

Hex D4AC99 Background



This preview shows how black text looks on a background with the Hex color D4AC99.

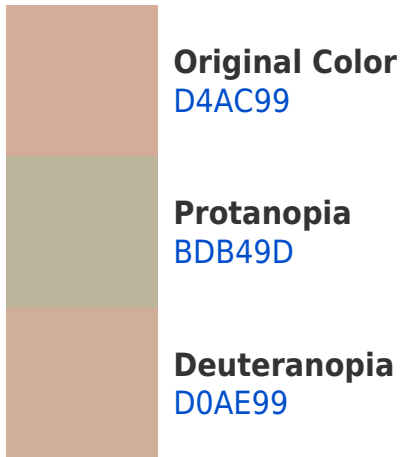


This preview shows how white text looks on a background with the Hex color D4AC99.

Color Blindness Simulation

Color vision deficiency is a very complex topic, and I could not describe the different causes any better than Wikipedia does, so if you want to learn more, you should check out their [article about color blindness](#).

Dichromacy





Tritanopia
D7A8B5

Trichromacy



Original Color
D4AC99

Protanomaly
C5B19C

Deuteranomaly
D1AD99

Tritanomaly
D6A9AB

Monochromacy



Original Color
D4AC99

Achromatopsia
B6B6B6

Achromatomaly
C1B2AB

CSS Examples

Text

The CSS property to change the color of the text to Hex D4AC99 is called "color". The color property can be set on classes, ids or directly on the HTML element.

This example shows how text in the color #D4AC99 looks like.

```
.text, #text, p{  
    color:#D4AC99  
}
```

If you want to add a text shadow in that color use the text-shadow property, you can generate a text shadow directly with our [CSS Text Shadow Generator](#).

Here you see how black text with a 4 pixel #D4AC99 colored shadow looks like.

```
.shadow{ text-shadow: 4px 4px 2px #D4AC99  
}
```

Border

The CSS property to change the border of an element to Hex D4AC99 is called "border". The border property can be set on classes, ids or directly on the HTML element.

This example shows the color as border, it can be applied via the CSS property "border" or "border-color".

```
.border, #border, table{ border:4px solid  
#D4AC99 }
```

If only the border color should be changed use the property `border-color`.

```
.border{ border-color:#D4AC99 }
```

If you want to add a box shadow in that color use:

Here you see how a box with a 4 pixel #D4AC99 colored shadow looks like.

```
.boxshadow{ -moz-box-shadow:4px 4px 4px  
4px #D4AC99; -webkit-box-shadow:4px 4px  
4px 4px #D4AC99; box-shadow:4px 4px 4px  
4px #D4AC99 }
```

Background

The CSS property to change the background color of an element to Hex D4AC99 is called "background". The background property can be set on classes, ids or directly on the HTML element.

```
.background, #background, body{  
background:#D4AC99 }
```

If only the background color should be changed can be used:

```
.background{ background-color:#D4AC99 }
```

This example shows the color as background, it is applied via the CSS property "background".

To optimize and compress your CSS code, you can use our [online CSS compressor and optimizer](#) based on csstidy. If you want to create a linear or radial gradient as background or border, check our [CSS Gradient Generator](#).

Hey! You found this booklet interesting? Support Converting Colors with the new Membership Option!

The pro membership hides all ads, plus gives you double the colors in the color bucket, and more awesome pro features!

[Learn more, Memberships starting at \\$2.50/m!](#)

**Follow me
on Twitter!**

@ConvertingColor