

Converting Colors

Hex(D4ADA6)

Have a look what the booklet for
Hex(D4ADAE) contains.

Hex(D4ADAE)	3
<i>Conversions</i>	4
<i>Details</i>	6
<i>Harmonies</i>	11
<i>Previews</i>	23
<i>Color Blindness Simulation</i>	26
<i>CSS Examples</i>	29

Color

Hex(D4ADA E)

Conversions

Conversions Part 1

Format	Color
Hex	D4ADAE
RGB	212, 173, 174
RGB Percent	83%, 68%, 68%
CMY	0.1686, 0.3216, 0.3176
CMYK	0.00, 0.18, 0.18, 0.17
HSL	358°, 31%, 75%
HSV	358°, 18%, 83%
XYZ	49.7349, 46.9402, 46.4834
YIQ	184.7750, 22.9230, 8.5790

Conversions

Conversions Part 2

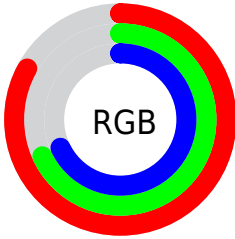
Format	Color
R _Y B	212, 173, 174
Decimal	13938094
CIE Lab	74.15, 14.33, 4.84
CIE LCh	74, 15.124, 18.660
Yxy	46.9402, 0.3474, 0.3279
Android (android.graphics.Color)	4292128174 (0xFFD4ADAE)
YUV	184.7750, -5.3121, 23.8763
Hunter-Lab	68.5129, 9.6792, 7.7330

Details

The Hex color **D4ADAE** is a light color, and the websafe version is hex **CC9999**. A complement of this color would be **ADD4D3**, and the grayscale version is **B9B9B9**.

A 20% lighter version of the original color is **FFE5E5**, and **9D797A** is the 20% darker color. If you saturate the color by 10%, you get **D49899**, and if you desaturate by 10%, it is **D4C2C3**.

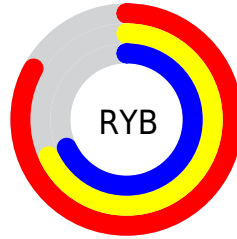
Distribution



Red (83%)

Green (68%)

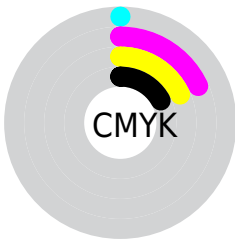
Blue (68%)



Red (83%)

Yellow (68%)

Blue (68%)

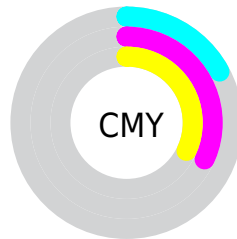


Cyan (0%)

Magenta (18%)

Yellow (18%)

Black (17%)



Cyan (17%)

Magenta (32%)

Yellow (32%)

Brightness & Saturation Gradients

These gradients show how the Hex color D4ADAE changes by changing the brightness by 10 percent. The first figure shows a shift by +10% for each color and the second figure -10%.

Similar to the brightness gradients but the following saturation gradients show a change of the Hex color D4ADAE by changing the saturation by 10% instead.



D4ADAE



D4ADAE

FFFFFF



B89293



FFE5E5



9D797A



826061



694849



503133



381C1E



240404



000000



D4ADAE



D4ADAE

 D49899

 D4C2C3

 D48385

 D4D7D7

 D46D70

 D4EDEC

 D4585B

 D4FFFF

 D44347

 D42E32

 D4191D

 D40309

 D40005

Harmonies

Analogous

The Analogous color harmony consists of three colors that are next to each other on the color wheel.



CFADBC



D4ADAE



D1AFA2

Triad

The Triadic color harmony groups three colors that are evenly spaced from another and form a triangle on the color wheel.



D4ADAE



A8BCA4



A1B9D1

Complementary

The Complementary color scheme is a pair of colors which are on the opposite of each other on the color wheel.



D4ADA E



A D D 4 D 3

Split Complementary

Split-complementary colors differ from the complementary color scheme. The scheme consists of three colors, the original color and two neighbors of the complement color.



95BDCB



D4ADAE



9ABE80

Square

The Square scheme is like the rectangle color scheme, but the four colors are evenly spaced on the color wheel.



D4ADA E



B8B9C



93BEBF



B2B5D0

Rectangle

The Rectangle color scheme consists of four colors that form a rectangle on the color wheel.



D4ADAE



CBB29D



93BEBF



9CBAD0

Sweetspot

The Sweet Spot groups the original color and five complimentary colors.



D4ADAE



FFF0F0



D3ADD4



807777



000000



808080

Same Dimension

The Same Dimension uses a secret algorithm to generate beautiful new colors.



D4ADAE



FFC7C8



D4BFAD



6B6061



AB0004



2B0001

Inverse Universe

The Inverse Universe completely reimagines the original color for something new.



D4ADAE



FFC7C8



ADC2D4



6B6061



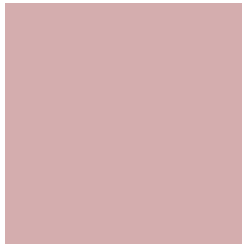
AB0004



2B0001

Previews

White Background



This preview shows how the Hex color D4ADAE looks on a white background.

Color Contrast Check

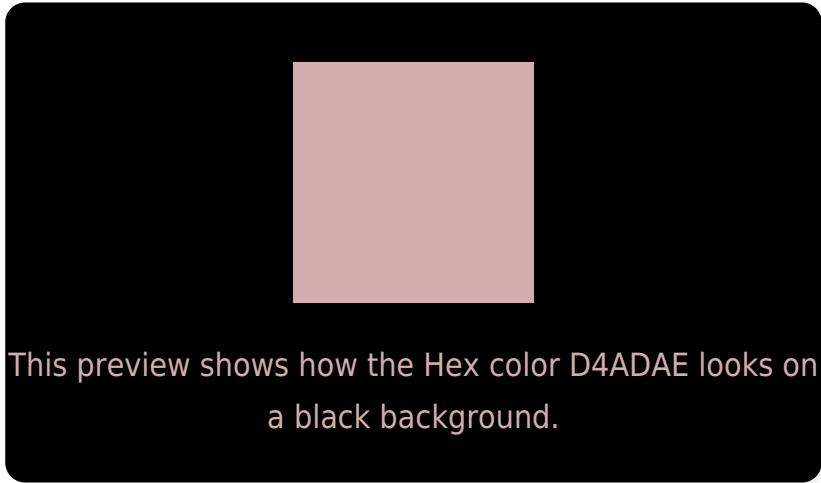
Large Text (above 18pt) WCAG AA × Fail

Any Text WCAG AA × Fail

Large Text (above 18pt) WCAG AAA × Fail

Any Text WCAG AAA × Fail

Black Background



Color Contrast Check

Large Text (above 18pt) WCAG AA ✓ Pass

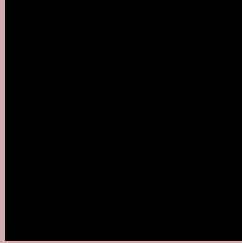
Any Text WCAG AA ✓ Pass

Large Text (above 18pt) WCAG AAA ✓ Pass

Any Text WCAG AAA ✓ Pass

If you want to check with other color combinations, try the [Color Contrast Checker](#).

Hex D4ADAE Background



This preview shows how black text looks on a background with the Hex color D4ADAE.



This preview shows how white text looks on a background with the Hex color D4ADAE.

Color Blindness Simulation

Color vision deficiency is a very complex topic, and I could not describe the different causes any better than Wikipedia does, so if you want to learn more, you should check out their [article about color blindness](#).

Dichromacy



Original Color
D4ADAE

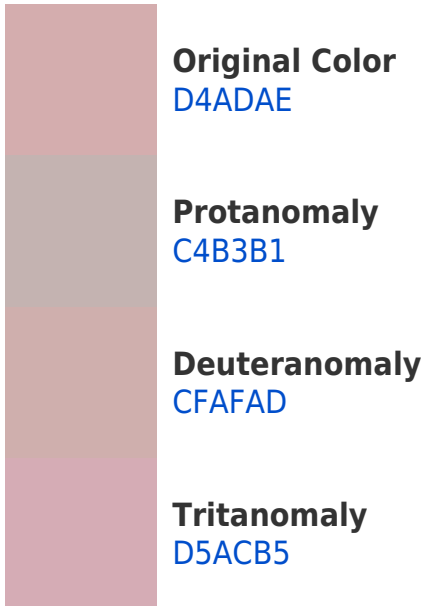
Protanopia
BBB6B3

Deuteranopia
CCB0AD

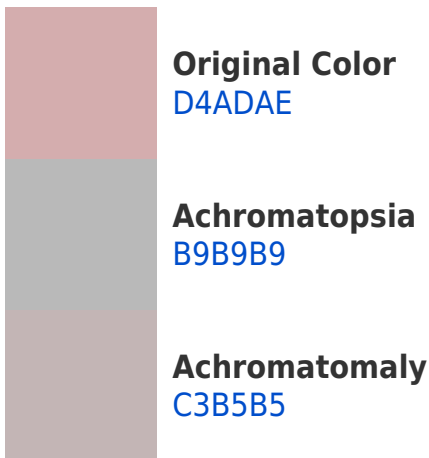


Tritanopia
D5ABB9

Trichromacy



Monochromacy



CSS Examples

Text

The CSS property to change the color of the text to Hex D4ADAE is called "color". The color property can be set on classes, ids or directly on the HTML element.

This example shows how text in the color #D4ADAE looks like.

```
.text, #text, p{  
  color:#D4ADAE  
}
```

If you want to add a text shadow in that color use the text-shadow property, you can generate a text shadow directly with our [CSS Text Shadow Generator](#).

Here you see how black text with a 4 pixel #D4ADAЕ colored shadow looks like.

```
.shadow{ text-shadow: 4px 4px 2px #D4ADAЕ }  
}
```

Border

The CSS property to change the border of an element to Hex D4ADAЕ is called "border". The border property can be set on classes, ids or directly on the HTML element.

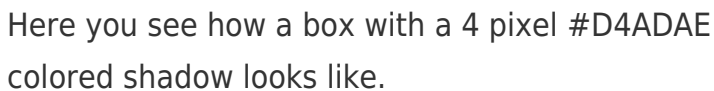
This example shows the color as border, it can be applied via the CSS property "border" or "border-color".

```
.border, #border, table{ border:4px solid #D4ADAЕ }  
}
```

If only the border color should be changed use the property border-color.

```
.border{ border-color:#D4ADAE }
```

If you want to add a box shadow in that color use:



Here you see how a box with a 4 pixel #D4ADAE colored shadow looks like.

```
.boxshadow{ -moz-box-shadow:4px 4px 4px  
4px #D4ADAE; -webkit-box-shadow:4px 4px  
4px 4px #D4ADAE; box-shadow:4px 4px 4px  
4px #D4ADAE }
```

Background

The CSS property to change the background color of an element to Hex D4ADAЕ is called "background". The background property can be set on classes, ids or directly on the HTML element.

```
.background, #background, body{  
background:#D4ADAЕ }
```

If only the background color should be changed can be used:

```
.background{ background-color:#D4ADAЕ }
```

This example shows the color as background, it is applied via the CSS property "background".

To optimize and compress your CSS code, you can use our [online CSS compressor and optimizer](#) based on csstidy. If you want to create a linear or radial gradient as background or border, check our [CSS Gradient Generator](#).

Hey! You found this booklet interesting? Support Converting Colors with the new Membership Option!

The pro membership hides all ads, plus gives you double the colors in the color bucket, and more awesome pro features!

[Learn more, Memberships starting at \\$2.50/m!](#)

**Follow me
on Twitter!**

@ConvertingColor