

Converting Colors

Hex(D4B0A9)

Have a look what the booklet for
Hex(D4B0A9) contains.

Hex(D4B0A9)	3
<i>Conversions</i>	4
<i>Details</i>	6
<i>Harmonies</i>	11
<i>Previews</i>	23
<i>Color Blindness Simulation</i>	26
<i>CSS Examples</i>	29

Color

Hex(D4B0A9)

Conversions

Conversions Part 1

Format	Color
Hex	D4B0A9
RGB	212, 176, 169
RGB Percent	83%, 69%, 66%
CMY	0.1686, 0.3098, 0.3373
CMYK	0.00, 0.17, 0.20, 0.17
HSL	10°, 33%, 75%
HSV	10°, 20%, 83%
XYZ	49.8381, 47.9123, 44.1574
YIQ	185.9660, 23.7030, 5.4550

Conversions

Conversions Part 2

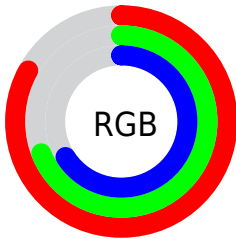
Format	Color
RYB	212, 177, 169
Decimal	13938857
CIELab	74.77, 11.94, 8.46
CIELCh	75, 14.636, 35.311
Yxy	47.9123, 0.3512, 0.3376
Android (android.graphics.Color)	4292128937 (0xFFD4B0A9)
YUV	185.9660, -8.3642, 22.8318
Hunter-Lab	69.2187, 7.3890, 10.6296

Details

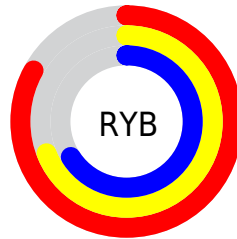
The Hex color **D4B0A9** is a light color, and the websafe version is hex **CC9999**. A complement of this color would be **A9CDD4**, and the grayscale version is **BABABA**.

A 20% lighter version of the original color is **FFE8E0**, and **9D7B75** is the 20% darker color. If you saturate the color by 10%, you get **D49E94**, and if you desaturate by 10%, it is **D4C2BE**.

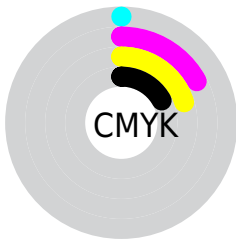
Distribution



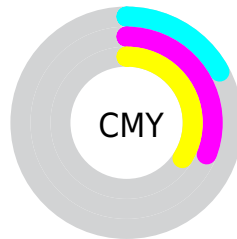
- Red (83%)
- Green (69%)
- Blue (66%)



- Red (83%)
- Yellow (69%)
- Blue (66%)



- Cyan (0%)
- Magenta (17%)
- Yellow (20%)
- Black (17%)



- Cyan (17%)
- Magenta (31%)
- Yellow (34%)

Brightness & Saturation Gradients

These gradients show how the Hex color D4B0A9 changes by changing the brightness by 10 percent. The first figure shows a shift by +10% for each color and the second figure -10%.

Similar to the brightness gradients but the following saturation gradients show a change of the Hex color D4B0A9 by changing the saturation by 10% instead.

 D4B0A9

 D4B0A9

FFFFFF

 B8958F

 FFE8E0

 9D7B75

FFFFFFD

 82625C

 694B45

 50342F

 381E1A

 240700

 000000

 D4B0A9

 D4B0A9

 D49E94

 D4C2BE

 D48D7F

 D4D3D3

 D47B69

 D4E5E9

 D46954

 D4F7FE

 D4573F

 D4FFFF

 D4462A

 D43415

 D42300

Harmonies

Analogous

The Analogous color harmony consists of three colors that are next to each other on the color wheel.



D4AFB6



D4B0A9



CDB3A0

Triad

The Triadic color harmony groups three colors that are evenly spaced from another and form a triangle on the color wheel.



D4B0A9



A2BFAC



ACB8D3

Complementary

The Complementary color scheme is a pair of colors which are on the opposite of each other on the color wheel.



D4B0A9



A9CDD4

Split Complementary

Split-complementary colors differ from the complementary color scheme. The scheme consists of three colors, the original color and two neighbors of the complement color.



9DBC00



D4B0A9



98C0BA

Square

The Square scheme is like the rectangle color scheme, but the four colors are evenly spaced on the color wheel.



D4B0A9



B1BCA2



96BFC7



BEB4CE

Rectangle

The Rectangle color scheme consists of four colors that form a rectangle on the color wheel.



D4B0A9



C5B69D



96BFC7



A7BAD2

Sweetspot

The Sweet Spot groups the original color and five complimentary colors.



D4B0A9



FFF2F0



D4A9CE



807877



000000



808080

Same Dimension

The Same Dimension uses a secret algorithm to generate beautiful new colors.



D4B0A9



FFCC2



D4C5A9



6B6260



AB1C00



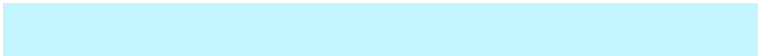
2B0700

Inverse Universe

The Inverse Universe completely reimagines the original color for something new.



A9CDD4



C2F5FF



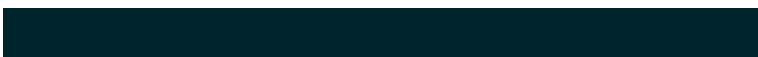
A9B8D4



60696B



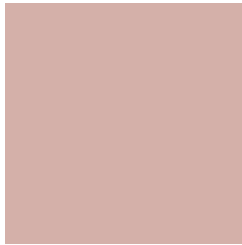
008FAB



00242B

Previews

White Background



This preview shows how the Hex color D4B0A9 looks on a white background.

Color Contrast Check

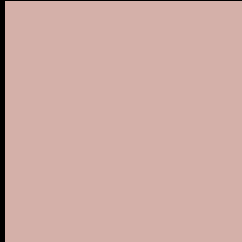
Large Text (above 18pt) WCAG AA × Fail

Any Text WCAG AA × Fail

Large Text (above 18pt) WCAG AAA × Fail

Any Text WCAG AAA × Fail

Black Background



This preview shows how the Hex color D4B0A9 looks on a black background.

Color Contrast Check

Large Text (above 18pt) WCAG AA ✓ Pass

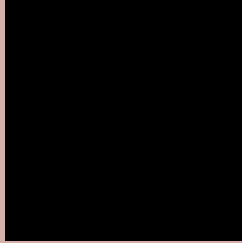
Any Text WCAG AA ✓ Pass

Large Text (above 18pt) WCAG AAA ✓ Pass

Any Text WCAG AAA ✓ Pass

If you want to check with other color combinations, try the [Color Contrast Checker](#).

Hex D4B0A9 Background



This preview shows how black text looks on a background with the Hex color D4B0A9.

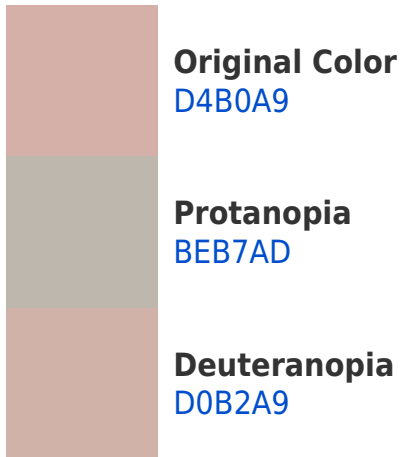


This preview shows how white text looks on a background with the Hex color D4B0A9.

Color Blindness Simulation

Color vision deficiency is a very complex topic, and I could not describe the different causes any better than Wikipedia does, so if you want to learn more, you should check out their [article about color blindness](#).

Dichromacy





Tritanopia
D6ADBB

Trichromacy



Original Color
D4B0A9

Protanomaly
C6B4AC

Deuteranomaly
D1B1A9

Tritanomaly
D5AEB4

Monochromacy



Original Color
D4B0A9

Achromatopsia
BABABA

Achromatomaly
C3B6B4

CSS Examples

Text

The CSS property to change the color of the text to Hex D4B0A9 is called "color". The color property can be set on classes, ids or directly on the HTML element.

This example shows how text in the color #D4B0A9 looks like.

```
.text, #text, p{  
    color:#D4B0A9  
}
```

If you want to add a text shadow in that color use the text-shadow property, you can generate a text shadow directly with our [CSS Text Shadow Generator](#).

Here you see how black text with a 4 pixel #D4B0A9 colored shadow looks like.

```
.shadow{ text-shadow: 4px 4px 2px #D4B0A9
}
```

Border

The CSS property to change the border of an element to Hex D4B0A9 is called "border". The border property can be set on classes, ids or directly on the HTML element.

This example shows the color as border, it can be applied via the CSS property "border" or "border-color".

```
.border, #border, table{ border:4px solid
#D4B0A9 }
```

If only the border color should be changed use the property `border-color`.

```
.border{ border-color:#D4B0A9 }
```

If you want to add a box shadow in that color use:

Here you see how a box with a 4 pixel #D4B0A9 colored shadow looks like.

```
.boxshadow{ -moz-box-shadow:4px 4px 4px  
4px #D4B0A9; -webkit-box-shadow:4px 4px  
4px 4px #D4B0A9; box-shadow:4px 4px 4px  
4px #D4B0A9 }
```

Background

The CSS property to change the background color of an element to Hex D4B0A9 is called "background". The background property can be set on classes, ids or directly on the HTML element.

```
.background, #background, body{  
background:#D4B0A9 }
```

If only the background color should be changed can be used:

```
.background{ background-color:#D4B0A9 }
```

This example shows the color as background, it is applied via the CSS property "background".

To optimize and compress your CSS code, you can use our [online CSS compressor and optimizer](#) based on csstidy. If you want to create a linear or radial gradient as background or border, check our [CSS Gradient Generator](#).

Hey! You found this booklet interesting? Support Converting Colors with the new Membership Option!

The pro membership hides all ads, plus gives you double the colors in the color bucket, and more awesome pro features!

[Learn more, Memberships starting at \\$2.50/m!](#)

**Follow me
on Twitter!**

@ConvertingColor