

Converting Colors

Hex(D4B0B5)

Have a look what the booklet for
Hex(D4B0B5) contains.

Hex(D4B0B5)	3
<i>Conversions</i>	4
<i>Details</i>	6
<i>Harmonies</i>	11
<i>Previews</i>	23
<i>Color Blindness Simulation</i>	26
<i>CSS Examples</i>	29

Color

Hex(D4B0B5)

Conversions

Conversions Part 1

Format	Color
Hex	D4B0B5
RGB	212, 176, 181
RGB Percent	83%, 69%, 71%
CMY	0.1686, 0.3098, 0.2902
CMYK	0.00, 0.17, 0.15, 0.17
HSL	352°, 30%, 76%
HSV	352°, 17%, 83%
XYZ	51.0172, 48.3839, 50.3662
YIQ	187.3340, 19.8510, 9.1870

Conversions

Conversions Part 2

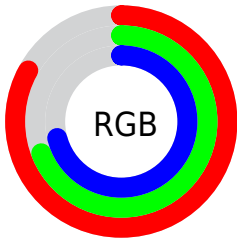
Format	Color
R_{YB}	212, 176, 181
Decimal	13938869
CIE _{Lab}	75.07, 13.82, 2.34
CIE _{LCh}	75, 14.014, 9.591
Yxy	48.3839, 0.3406, 0.3231
Android (android.graphics.Color)	4292128949 (0xFFD4B0B5)
YUV	187.3340, -3.1227, 21.6321
Hunter-Lab	69.5585, 9.1921, 5.7601

Details

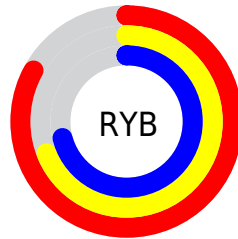
The Hex color **D4B0B5** is a light color, and the websafe version is hex **CC9999**. A complement of this color would be **B0D4CF**, and the grayscale version is **BBBBBB**.

A 20% lighter version of the original color is **FFE8ED**, and **9D7B80** is the 20% darker color. If you saturate the color by 10%, you get **D49BA3**, and if you desaturate by 10%, it is **D4C5C7**.

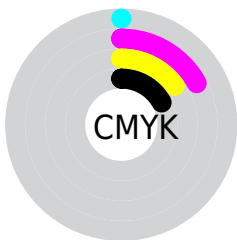
Distribution



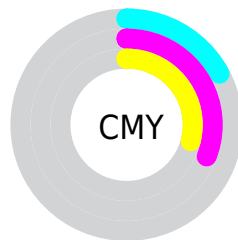
- Red (83%)
- Green (69%)
- Blue (71%)



- Red (83%)
- Yellow (69%)
- Blue (71%)



- Cyan (0%)
- Magenta (17%)
- Yellow (15%)
- Black (17%)



- Cyan (17%)
- Magenta (31%)
- Yellow (29%)

Brightness & Saturation Gradients

These gradients show how the Hex color D4B0B5 changes by changing the brightness by 10 percent. The first figure shows a shift by +10% for each color and the second figure -10%.

Similar to the brightness gradients but the following saturation gradients show a change of the Hex color D4B0B5 by changing the saturation by 10% instead.

 D4B0B5

 D4B0B5

FFFFFF

 B8959A

 FFE8ED

 9D7B80

 836267

 694A4F

 503438

 391E23

 24070D

 000000

 D4B0B5

 D4B0B5

 D49BA3

 D4C5C7

 D48690

 D4DADA

 D4707E

 D4F0EC

 D45B6C

 D4FFFE

 D4465A

 D4FFFF

 D43147

 D41C35

 D40623

 D4001D

Harmonies

Analogous

The Analogous color harmony consists of three colors that are next to each other on the color wheel.



CDB1C2



D4B0B5



D3B2A9

Triad

The Triadic color harmony groups three colors that are evenly spaced from another and form a triangle on the color wheel.



D4B0B5



B0BDA5



A1BDD1

Complementary

The Complementary color scheme is a pair of colors which are on the opposite of each other on the color wheel.



D4B0B5



B0D4CF

Split Complementary

Split-complementary colors differ from the complementary color scheme. The scheme consists of three colors, the original color and two neighbors of the complement color.



99BFC9



D4B0B5



A2C0AF

Square

The Square scheme is like the rectangle color scheme, but the four colors are evenly spaced on the color wheel.



D4B0B5



BFB99F



99C1BD



B0B8D2

Rectangle

The Rectangle color scheme consists of four colors that form a rectangle on the color wheel.



D4B0B5



CFB4A3



99C1BD



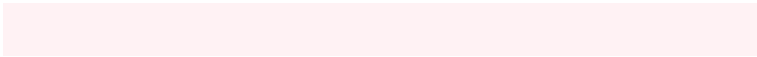
9DBECF

Sweetspot

The Sweet Spot groups the original color and five complimentary colors.



D4B0B5



FFF2F4



CFB0D4



807879



000000



808080

Same Dimension

The Same Dimension uses a secret algorithm to generate beautiful new colors.



D4B0B5



FFCCD3



D4BDB0



6B6062



AB0018



2B0006

Inverse Universe

The Inverse Universe completely reimagines the original color for something new.



D4B0B5



FFCCD3



B0C7D4



6B6062



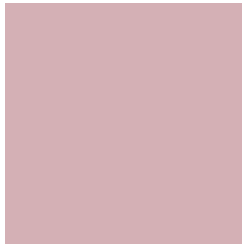
AB0018



2B0006

Previews

White Background



This preview shows how the Hex color D4B0B5 looks on a white background.

Color Contrast Check

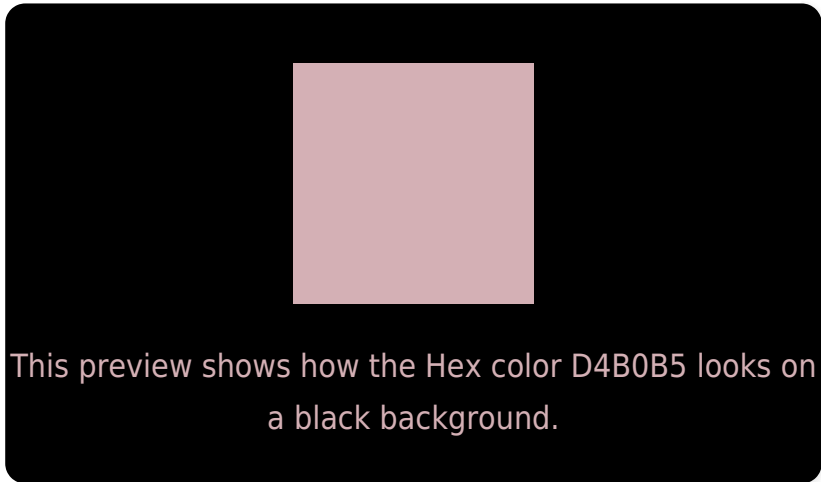
Large Text (above 18pt) WCAG AA × Fail

Any Text WCAG AA × Fail

Large Text (above 18pt) WCAG AAA × Fail

Any Text WCAG AAA × Fail

Black Background



Color Contrast Check

Large Text (above 18pt) WCAG AA ✓ Pass

Any Text WCAG AA ✓ Pass

Large Text (above 18pt) WCAG AAA ✓ Pass

Any Text WCAG AAA ✓ Pass

If you want to check with other color combinations, try the [Color Contrast Checker](#).

Hex D4B0B5 Background



This preview shows how black text looks on a background with the Hex color D4B0B5.



This preview shows how white text looks on a background with the Hex color D4B0B5.

Color Blindness Simulation

Color vision deficiency is a very complex topic, and I could not describe the different causes any better than Wikipedia does, so if you want to learn more, you should check out their [article about color blindness](#).

Dichromacy



Original Color
D4B0B5

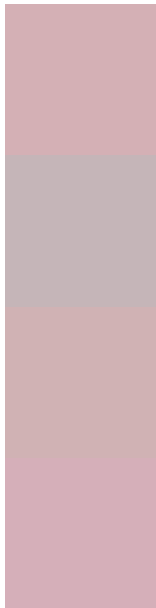
Protanopia
BCB8BA

Deuteranopia
CDB3B4



Tritanopia
D5AFBC

Trichromacy



Original Color
D4B0B5

Protanomaly
C5B5B8

Deuteranomaly
D0B2B4

Tritanomaly
D5AFB9

Monochromacy



Original Color
D4B0B5

Achromatopsia
BBBBBB

Achromatomaly
C4B7B9

CSS Examples

Text

The CSS property to change the color of the text to Hex D4B0B5 is called "color". The color property can be set on classes, ids or directly on the HTML element.

This example shows how text in the color #D4B0B5 looks like.

```
.text, #text, p{  
    color:#D4B0B5  
}
```

If you want to add a text shadow in that color use the text-shadow property, you can generate a text shadow directly with our [CSS Text Shadow Generator](#).

Here you see how black text with a 4 pixel #D4B0B5 colored shadow looks like.

```
.shadow{ text-shadow: 4px 4px 2px #D4B0B5  
}
```

Border

The CSS property to change the border of an element to Hex D4B0B5 is called "border". The border property can be set on classes, ids or directly on the HTML element.

This example shows the color as border, it can be applied via the CSS property "border" or "border-color".

```
.border, #border, table{ border:4px solid  
#D4B0B5 }
```

If only the border color should be changed use the property `border-color`.

```
.border{ border-color:#D4B0B5 }
```

If you want to add a box shadow in that color use:

Here you see how a box with a 4 pixel #D4B0B5 colored shadow looks like.

```
.boxshadow{ -moz-box-shadow:4px 4px 4px  
4px #D4B0B5; -webkit-box-shadow:4px 4px  
4px 4px #D4B0B5; box-shadow:4px 4px 4px  
4px #D4B0B5 }
```

Background

The CSS property to change the background color of an element to Hex D4B0B5 is called "background". The background property can be set on classes, ids or directly on the HTML element.

```
.background, #background, body{  
background:#D4B0B5 }
```

If only the background color should be changed can be used:

```
.background{ background-color:#D4B0B5 }
```

This example shows the color as background, it is applied via the CSS property "background".

To optimize and compress your CSS code, you can use our [online CSS compressor and optimizer](#) based on csstidy. If you want to create a linear or radial gradient as background or border, check our [CSS Gradient Generator](#).

Hey! You found this booklet interesting? Support Converting Colors with the new Membership Option!

The pro membership hides all ads, plus gives you double the colors in the color bucket, and more awesome pro features!

[Learn more, Memberships starting at \\$2.50/m!](#)

**Follow me
on Twitter!**

@ConvertingColor