

# Converting Colors

Hex(D4B1B7)

Have a look what the booklet for  
Hex(D4B1B7) contains.

|  |    |
|--|----|
| <b>Hex(D4B1B7)</b> .....                       | 3  |
| <i><b>Conversions</b></i> .....                | 4  |
| <i><b>Details</b></i> .....                    | 6  |
| <i><b>Harmonies</b></i> .....                  | 11 |
| <i><b>Previews</b></i> .....                   | 23 |
| <i><b>Color Blindness Simulation</b></i> ..... | 26 |
| <i><b>CSS Examples</b></i> .....               | 29 |

# **Color**

**Hex(D4B1B7)**

# Conversions

## Conversions Part 1

| Format      | Color                     |
|-------------|---------------------------|
| Hex         | D4B1B7                    |
| RGB         | 212, 177, 183             |
| RGB Percent | 83%, 69%, 72%             |
| CMY         | 0.1686, 0.3059, 0.2824    |
| CMYK        | 0.00, 0.17, 0.14, 0.17    |
| HSL         | 350°, 29%, 76%            |
| HSV         | 350°, 17%, 83%            |
| XYZ         | 51.4208, 48.8602, 51.5205 |
| YIQ         | 188.1490, 18.9340, 9.2860 |

# Conversions

## Conversions Part 2

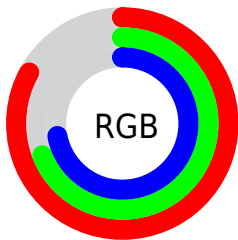
| Format                              | Color                         |
|-------------------------------------|-------------------------------|
| R <sub>Y</sub> B                    | 212, 177, 183                 |
| Decimal                             | 13939127                      |
| CIE Lab                             | 75.36, 13.60, 1.68            |
| CIE LCh                             | 75, 13.706, 7.023             |
| Yxy                                 | 48.8602, 0.3387,<br>0.3219    |
| Android<br>(android.graphics.Color) | 4292129207<br>(0xFFD4B1B7)    |
| YUV                                 | 188.1490, -2.5385,<br>20.9173 |
| Hunter-Lab                          | 69.9001, 8.9852,<br>5.2298    |

# Details

The Hex color **D4B1B7** is a light color, and the websafe version is hex **CC9999**. A complement of this color would be **B1D4CE**, and the grayscale version is **BCBCBC**.

A 20% lighter version of the original color is **FFE9EF**, and **9D7C82** is the 20% darker color. If you saturate the color by 10%, you get **D49CA5**, and if you desaturate by 10%, it is **D4C6C9**.

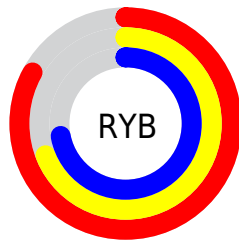
# Distribution



Red (83%)

Green (69%)

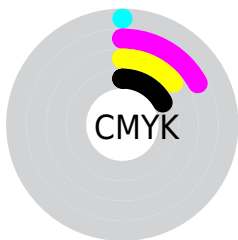
Blue (72%)



Red (83%)

Yellow (69%)

Blue (72%)

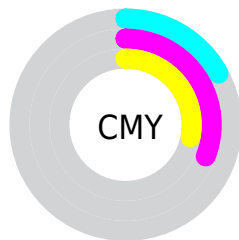


Cyan (0%)

Magenta (17%)

Yellow (14%)

Black (17%)



Cyan (17%)

Magenta (31%)

Yellow (28%)

# Brightness & Saturation Gradients

These gradients show how the Hex color D4B1B7 changes by changing the brightness by 10 percent. The first figure shows a shift by +10% for each color and the second figure -10%.

Similar to the brightness gradients but the following saturation gradients show a change of the Hex color D4B1B7 by changing the saturation by 10% instead.



 D4B1B7

 D4B1B7

FFFFFF

 B8969C

 FFE9EF

 9D7C82

 836369

 694B51

 51343A

 391F24

 24090F

 000000

 D4B1B7

 D4B1B7

 D49CA5

 D4C6C9

 D48794

 D4DBDA

 D47182

 D4F1EC

 D45C71

 D4FFFD

 D4475F

 D4FFFF

 D4324E

 D41D3C

 D4072A

 D40024

# Harmonies

## Analogous

The Analogous color harmony consists of three colors that are next to each other on the color wheel.



CDB2C4



D4B1B7



D4B2AB

# Triad

The Triadic color harmony groups three colors that are evenly spaced from another and form a triangle on the color wheel.



D4B1B7



B2BEA5



A2BED0

# Complementary

The Complementary color scheme is a pair of colors which are on the opposite of each other on the color wheel.



D4B1B7



B1D4CE

# Split Complementary

Split-complementary colors differ from the complementary color scheme. The scheme consists of three colors, the original color and two neighbors of the complement color.



9AC0C8



D4B1B7



A5C0AF

# Square

The Square scheme is like the rectangle color scheme, but the four colors are evenly spaced on the color wheel.



D4B1B7



C1BAA1



9BC1BC



B0BAD2

# Rectangle

The Rectangle color scheme consists of four colors that form a rectangle on the color wheel.



D4B1B7



D0B4A5



9BC1BC



9EBFCE



# Sweetspot

The Sweet Spot groups the original color and five complimentary colors.



D4B1B7



FFF2F4



CEB1D4



807879



000000



808080



# Same Dimension

The Same Dimension uses a secret algorithm to generate beautiful new colors.



D4B1B7



FFCCD5



D4BCB1



6B6062



AB001D



2B0007



# Inverse Universe

The Inverse Universe completely reimagines the original color for something new.



D4B1B7



FFCCD5



B1C9D4



6B6062



AB001D

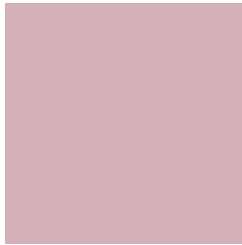


2B0007



# Previews

## White Background



This preview shows how the Hex color D4B1B7 looks on a white background.

## Color Contrast Check

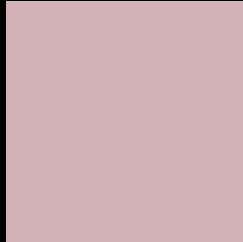
Large Text (above 18pt) WCAG AA × Fail

Any Text WCAG AA × Fail

Large Text (above 18pt) WCAG AAA × Fail

Any Text WCAG AAA × Fail

# Black Background



This preview shows how the Hex color D4B1B7 looks on a black background.

## Color Contrast Check

Large Text (above 18pt) WCAG AA ✓ Pass

Any Text WCAG AA ✓ Pass

Large Text (above 18pt) WCAG AAA ✓ Pass

Any Text WCAG AAA ✓ Pass

If you want to check with other color combinations, try the [Color Contrast Checker](#).



## Hex D4B1B7 Background



This preview shows how black text looks on a background with the Hex color D4B1B7.

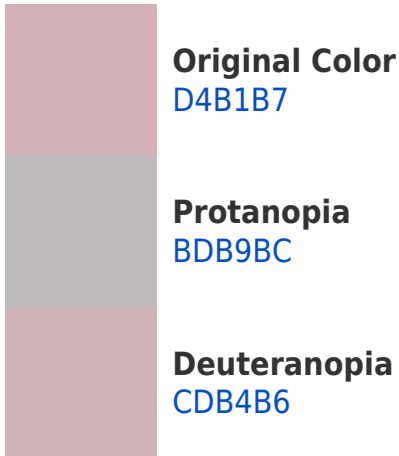



This preview shows how white text looks on a background with the Hex color D4B1B7.

# Color Blindness Simulation

Color vision deficiency is a very complex topic, and I could not describe the different causes any better than Wikipedia does, so if you want to learn more, you should check out their [article about color blindness](#).

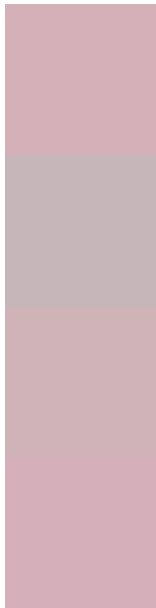
## Dichromacy





**Tritanopia**  
D5B0BE

# Trichromacy



**Original Color**  
D4B1B7

**Protanomaly**  
C5B6BA

**Deuteranomaly**  
D0B3B6

**Tritanomaly**  
D5B0BB

# Monochromacy



**Original Color**  
D4B1B7

**Achromatopsia**  
BCBCBC

**Achromatomaly**  
C5B8BA

# CSS Examples

## Text

The CSS property to change the color of the text to Hex D4B1B7 is called "color". The color property can be set on classes, ids or directly on the HTML element.

This example shows how text in the color #D4B1B7 looks like.

```
.text, #text, p{  
    color:#D4B1B7  
}
```

If you want to add a text shadow in that color use the text-shadow property, you can generate a text shadow directly with our [CSS Text Shadow Generator](#).

Here you see how black text with a 4 pixel #D4B1B7 colored shadow looks like.

```
.shadow{ text-shadow: 4px 4px 2px #D4B1B7
}
```

## Border

The CSS property to change the border of an element to Hex D4B1B7 is called "border". The border property can be set on classes, ids or directly on the HTML element.

This example shows the color as border, it can be applied via the CSS property "border" or "border-color".

```
.border, #border, table{ border:4px solid
#D4B1B7 }
```

If only the border color should be changed use the property `border-color`.

```
.border{ border-color:#D4B1B7 }
```

If you want to add a box shadow in that color use:

Here you see how a box with a 4 pixel #D4B1B7 colored shadow looks like.

```
.boxshadow{ -moz-box-shadow:4px 4px 4px  
4px #D4B1B7; -webkit-box-shadow:4px 4px  
4px 4px #D4B1B7; box-shadow:4px 4px 4px  
4px #D4B1B7 }
```

# Background

The CSS property to change the background color of an element to Hex D4B1B7 is called "background". The background property can be set on classes, ids or directly on the HTML element.

```
.background, #background, body{  
background:#D4B1B7 }
```

If only the background color should be changed can be used:

```
.background{ background-color:#D4B1B7 }
```

This example shows the color as background, it is applied via the CSS property "background".

To optimize and compress your CSS code, you can use our [online CSS compressor and optimizer](#) based on csstidy. If you want to create a linear or radial gradient as background or border, check our [CSS Gradient Generator](#).



Hey! You found this booklet interesting? Support Converting Colors with the new Membership Option!

The pro membership hides all ads, plus gives you double the colors in the color bucket, and more awesome pro features!

**[Learn more, Memberships starting at \\$2.50/m!](#)**

**Follow me  
on Twitter!**

@ConvertingColor