

# Converting Colors

Hex(D4B3A9)

Have a look what the booklet for  
Hex(D4B3A9) contains.

<b>Hex(D4B3A9)</b> .....	3
<i><b>Conversions</b></i> .....	4
<i><b>Details</b></i> .....	6
<i><b>Harmonies</b></i> .....	11
<i><b>Previews</b></i> .....	23
<i><b>Color Blindness Simulation</b></i> .....	26
<i><b>CSS Examples</b></i> .....	29

# **Color**

**Hex(D4B3A9)**

# Conversions

## Conversions Part 1

Format	Color
Hex	D4B3A9
RGB	212, 179, 169
RGB Percent	83%, 70%, 66%
CMY	0.1686, 0.2980, 0.3373
CMYK	0.00, 0.16, 0.20, 0.17
HSL	14°, 33%, 75%
HSV	14°, 20%, 83%
XYZ	50.4329, 49.1018, 44.3556
YIQ	187.7270, 22.8780, 3.8860

# Conversions

## Conversions Part 2

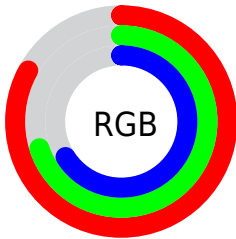
Format	Color
R <sub>Y</sub> B	212, 182, 169
Decimal	13939625
CIE Lab	75.51, 10.33, 9.52
CIE LCh	76, 14.049, 42.675
Yxy	49.1018, 0.3505, 0.3412
Android (android.graphics.Color)	4292129705 (0xFFD4B3A9)
YUV	187.7270, -9.2324, 21.2874
Hunter-Lab	70.0727, 5.8433, 11.5207

# Details

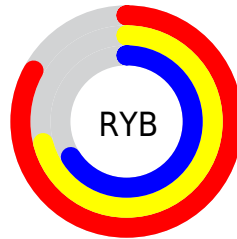
The Hex color **D4B3A9** is a light color, and the websafe version is hex **CC9999**. A complement of this color would be **A9CAD4**, and the grayscale version is **BCBCBC**.

A 20% lighter version of the original color is **FFEBE0**, and **9D7E75** is the 20% darker color. If you saturate the color by 10%, you get **D4A394**, and if you desaturate by 10%, it is **D4C3BE**.

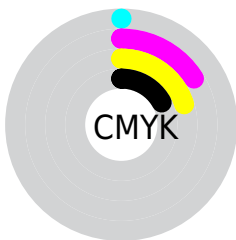
# Distribution



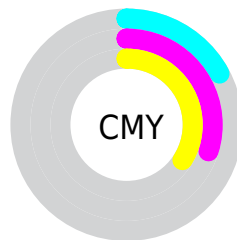
- Red (83%)
- Green (70%)
- Blue (66%)



- Red (83%)
- Yellow (71%)
- Blue (66%)



- Cyan (0%)
- Magenta (16%)
- Yellow (20%)
- Black (17%)



- Cyan (17%)
- Magenta (30%)
- Yellow (34%)

# Brightness & Saturation Gradients

These gradients show how the Hex color D4B3A9 changes by changing the brightness by 10 percent. The first figure shows a shift by +10% for each color and the second figure -10%.

Similar to the brightness gradients but the following saturation gradients show a change of the Hex color D4B3A9 by changing the saturation by 10% instead.



 D4B3A9

 D4B3A9

FFFFFF

 B8988F

 FFEBE0

 9D7E75

FFFFFFD

 82655C

 694D45

 50362F

 38211A

 240B00

 000000

 D4B3A9

 D4B3A9

 D4A394

 D4C3BE

 D4927F

 D4D4D3

 D48269

 D4E4E9

 D47254

 D4F4FE

 D4623F

 D4FFFF

 D4512A

 D44115

 D43100

# Harmonies

## Analogous

The Analogous color harmony consists of three colors that are next to each other on the color wheel.



D6B1B5



D4B3A9



CCB7A2

# Triad

The Triadic color harmony groups three colors that are evenly spaced from another and form a triangle on the color wheel.



D4B3A9



A2C1B2



B3B9D3

# Complementary

The Complementary color scheme is a pair of colors which are on the opposite of each other on the color wheel.



D4B3A9



A9CAD4

# Split Complementary

Split-complementary colors differ from the complementary color scheme. The scheme consists of three colors, the original color and two neighbors of the complement color.



A4BDD2



D4B3A9



9AC2BF

# Square

The Square scheme is like the rectangle color scheme, but the four colors are evenly spaced on the color wheel.



D4B3A9



B0BFA7



9AC0CB



C3B5CD

# Rectangle

The Rectangle color scheme consists of four colors that form a rectangle on the color wheel.



D4B3A9



C3B9A0



9AC0CB



AEBBD4

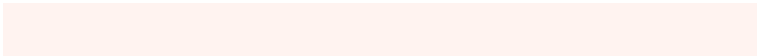


# Sweetspot

The Sweet Spot groups the original color and five complimentary colors.



D4B3A9



FFF3F0



D4A9CB



807977



000000



808080



# Same Dimension

The Same Dimension uses a secret algorithm to generate beautiful new colors.



D4B3A9



FFD0C2



D4C8A9



6B6360



AB2800



2B0A00

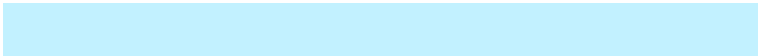


# Inverse Universe

The Inverse Universe completely reimagines the original color for something new.



A9CAD4



C2F1FF



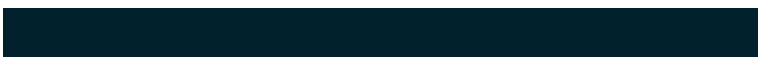
A9B5D4



60696B



0083AB

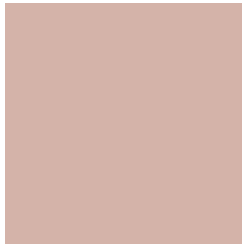


00212B



# Previews

## White Background



This preview shows how the Hex color D4B3A9 looks on a white background.

## Color Contrast Check

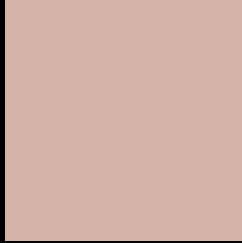
Large Text (above 18pt) WCAG AA × Fail

Any Text WCAG AA × Fail

Large Text (above 18pt) WCAG AAA × Fail

Any Text WCAG AAA × Fail

# Black Background



This preview shows how the Hex color D4B3A9 looks on a black background.

## Color Contrast Check

Large Text (above 18pt) WCAG AA ✓ Pass

Any Text WCAG AA ✓ Pass

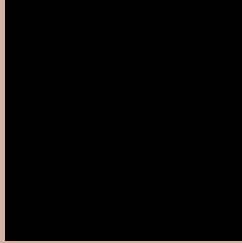
Large Text (above 18pt) WCAG AAA ✓ Pass

Any Text WCAG AAA ✓ Pass

If you want to check with other color combinations, try the [Color Contrast Checker](#).



## Hex D4B3A9 Background



This preview shows how black text looks on a background with the Hex color D4B3A9.

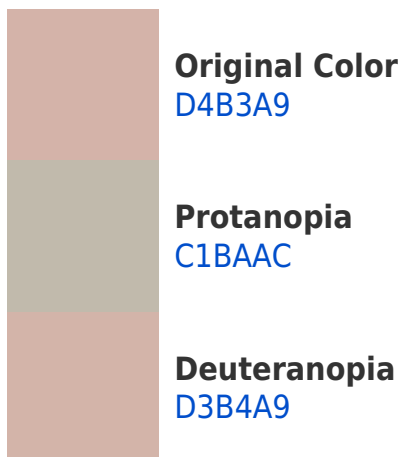



This preview shows how white text looks on a background with the Hex color D4B3A9.

# Color Blindness Simulation

Color vision deficiency is a very complex topic, and I could not describe the different causes any better than Wikipedia does, so if you want to learn more, you should check out their [article about color blindness](#).

## Dichromacy





**Tritanopia**  
D7B0BE

# Trichromacy



**Original Color**  
D4B3A9

**Protanomaly**  
C8B7AB

**Deuteranomaly**  
D3B4A9

**Tritanomaly**  
D6B1B6

# Monochromacy



**Original Color**  
D4B3A9

**Achromatopsia**  
BCBCBC

**Achromatomaly**  
C5B9B5

# CSS Examples

## Text

The CSS property to change the color of the text to Hex D4B3A9 is called "color". The color property can be set on classes, ids or directly on the HTML element.

This example shows how text in the color #D4B3A9 looks like.

```
.text, #text, p{  
    color:#D4B3A9  
}
```

If you want to add a text shadow in that color use the text-shadow property, you can generate a text shadow directly with our [CSS Text Shadow Generator](#).

Here you see how black text with a 4 pixel #D4B3A9 colored shadow looks like.

```
.shadow{ text-shadow: 4px 4px 2px #D4B3A9
}
```

## Border

The CSS property to change the border of an element to Hex D4B3A9 is called "border". The border property can be set on classes, ids or directly on the HTML element.

This example shows the color as border, it can be applied via the CSS property "border" or "border-color".

```
.border, #border, table{ border:4px solid
#D4B3A9 }
```

If only the border color should be changed use the property `border-color`.

```
.border{ border-color:#D4B3A9 }
```

If you want to add a box shadow in that color use:

Here you see how a box with a 4 pixel #D4B3A9 colored shadow looks like.

```
.boxshadow{ -moz-box-shadow:4px 4px 4px  
4px #D4B3A9; -webkit-box-shadow:4px 4px  
4px 4px #D4B3A9; box-shadow:4px 4px 4px  
4px #D4B3A9 }
```

# Background

The CSS property to change the background color of an element to Hex D4B3A9 is called "background". The background property can be set on classes, ids or directly on the HTML element.

```
.background, #background, body{  
background:#D4B3A9 }
```

If only the background color should be changed can be used:

```
.background{ background-color:#D4B3A9 }
```

This example shows the color as background, it is applied via the CSS property "background".

To optimize and compress your CSS code, you can use our [online CSS compressor and optimizer](#) based on csstidy. If you want to create a linear or radial gradient as background or border, check our [CSS Gradient Generator](#).



Hey! You found this booklet interesting? Support Converting Colors with the new Membership Option!

The pro membership hides all ads, plus gives you double the colors in the color bucket, and more awesome pro features!

**[Learn more, Memberships starting at \\$2.50/m!](#)**

**Follow me  
on Twitter!**

@ConvertingColor