

Converting Colors

Hex(D4B5B8)

Have a look what the booklet for
Hex(D4B5B8) contains.

Hex(D4B5B8)	3
<i>Conversions</i>	4
<i>Details</i>	6
<i>Harmonies</i>	11
<i>Previews</i>	23
<i>Color Blindness Simulation</i>	26
<i>CSS Examples</i>	29

Color

Hex(D4B5B8)

Conversions

Conversions Part 1

Format	Color
Hex	D4B5B8
RGB	212, 181, 184
RGB Percent	83%, 71%, 72%
CMY	0.1686, 0.2902, 0.2784
CMYK	0.00, 0.15, 0.13, 0.17
HSL	354°, 26%, 77%
HSV	354°, 15%, 83%
XYZ	52.3270, 50.5055, 52.3380
YIQ	190.6110, 17.5130, 7.5050

Conversions

Conversions Part 2

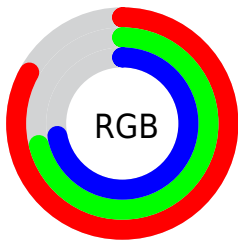
Format	Color
R _Y B	212, 181, 184
Decimal	13940152
CIE Lab	76.38, 11.61, 2.60
CIE LCh	76, 11.900, 12.643
Yxy	50.5055, 0.3372, 0.3255
Android (android.graphics.Color)	4292130232 (0xFFD4B5B8)
YUV	190.6110, -3.2592, 18.7582
Hunter-Lab	71.0672, 7.0624, 6.0825

Details

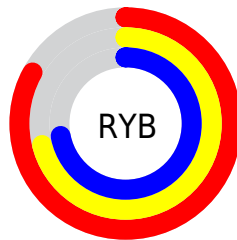
The Hex color **D4B5B8** is a light color, and the websafe version is hex **CC9999**. A complement of this color would be **B5D4D1**, and the grayscale version is **BFBFBF**.

A 20% lighter version of the original color is **FFEDF0**, and **9D8083** is the 20% darker color. If you saturate the color by 10%, you get **D4A0A5**, and if you desaturate by 10%, it is **D4CACB**.

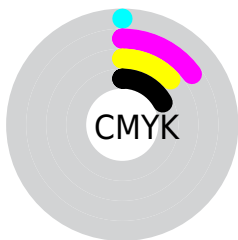
Distribution



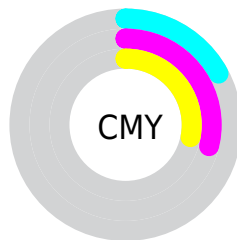
- Red (83%)
- Green (71%)
- Blue (72%)



- Red (83%)
- Yellow (71%)
- Blue (72%)



- Cyan (0%)
- Magenta (15%)
- Yellow (13%)
- Black (17%)



- Cyan (17%)
- Magenta (29%)
- Yellow (28%)

Brightness & Saturation Gradients

These gradients show how the Hex color D4B5B8 changes by changing the brightness by 10 percent. The first figure shows a shift by +10% for each color and the second figure -10%.

Similar to the brightness gradients but the following saturation gradients show a change of the Hex color D4B5B8 by changing the saturation by 10% instead.

 D4B5B8

 D4B5B8

FFFFFF

 B89A9D

 FFEDF0

 9D8083

 83676A

 694F52

 51383B

 392225

 240D10

 000000

 D4B5B8

 D4B5B8

 D4A0A5

 D4CACB

 D48B92

 D4DFDE

 D4757F

 D4F5F1

 D4606B

 D4FFFF

 D44B58

 D43645

 D42132

 D40B1F

 D40015

Harmonies

Analogous

The Analogous color harmony consists of three colors that are next to each other on the color wheel.



CFB6C3



D4B5B8



D3B6AE

Triad

The Triadic color harmony groups three colors that are evenly spaced from another and form a triangle on the color wheel.



D4B5B8



B4C0AC



AABFD1

Complementary

The Complementary color scheme is a pair of colors which are on the opposite of each other on the color wheel.



D4B5B8



B5D4D1

Split Complementary

Split-complementary colors differ from the complementary color scheme. The scheme consists of three colors, the original color and two neighbors of the complement color.



A2C2CB



D4B5B8



A8C2B5

Square

The Square scheme is like the rectangle color scheme, but the four colors are evenly spaced on the color wheel.



D4B5B8



C1BDA7



A2C3C1



B7BCD2

Rectangle

The Rectangle color scheme consists of four colors that form a rectangle on the color wheel.



D4B5B8



CFB8A9



A2C3C1



A6C0D0

Sweetspot

The Sweet Spot groups the original color and five complimentary colors.



D4B5B8



FFF5F6



D1B5D4



80797A



000000



808080

Same Dimension

The Same Dimension uses a secret algorithm to generate beautiful new colors.



D4B5B8



FFD1D6



D4C1B5



6B6061



AB0011



2B0004

Inverse Universe

The Inverse Universe completely reimagines the original color for something new.



D4B5B8



FFD1D6



B5C8D4



6B6061



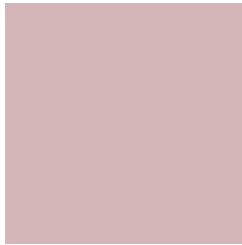
AB0011



2B0004

Previews

White Background



This preview shows how the Hex color D4B5B8 looks on a white background.

Color Contrast Check

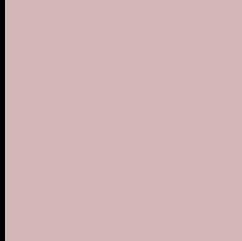
Large Text (above 18pt) WCAG AA × Fail

Any Text WCAG AA × Fail

Large Text (above 18pt) WCAG AAA × Fail

Any Text WCAG AAA × Fail

Black Background



This preview shows how the Hex color D4B5B8 looks on a black background.

Color Contrast Check

Large Text (above 18pt) WCAG AA ✓ Pass

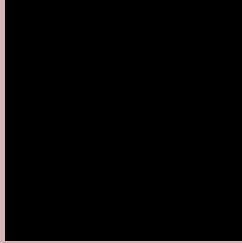
Any Text WCAG AA ✓ Pass

Large Text (above 18pt) WCAG AAA ✓ Pass

Any Text WCAG AAA ✓ Pass

If you want to check with other color combinations, try the [Color Contrast Checker](#).

Hex D4B5B8 Background



This preview shows how black text looks on a background with the Hex color D4B5B8.



This preview shows how white text looks on a background with the Hex color D4B5B8.

Color Blindness Simulation

Color vision deficiency is a very complex topic, and I could not describe the different causes any better than Wikipedia does, so if you want to learn more, you should check out their [article about color blindness](#).

Dichromacy



Original Color
D4B5B8

Protanopia
C0BCBC

Deuteranopia
D0B6B8



Tritanopia
D5B4C2

Trichromacy



Original Color
D4B5B8

Protanomaly
C7B9BB

Deuteranomaly
D1B6B8

Tritanomaly
D5B4BE

Monochromacy



Original Color
D4B5B8

Achromatopsia
BFBFBF

Achromatomaly
C7BBBC

CSS Examples

Text

The CSS property to change the color of the text to Hex D4B5B8 is called "color". The color property can be set on classes, ids or directly on the HTML element.

This example shows how text in the color #D4B5B8 looks like.

```
.text, #text, p{  
    color:#D4B5B8  
}
```

If you want to add a text shadow in that color use the text-shadow property, you can generate a text shadow directly with our [CSS Text Shadow Generator](#).

Here you see how black text with a 4 pixel #D4B5B8 colored shadow looks like.

```
.shadow{ text-shadow: 4px 4px 2px #D4B5B8
}
```

Border

The CSS property to change the border of an element to Hex D4B5B8 is called "border". The border property can be set on classes, ids or directly on the HTML element.

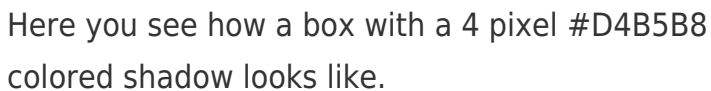
This example shows the color as border, it can be applied via the CSS property "border" or "border-color".

```
.border, #border, table{ border:4px solid
#D4B5B8 }
```

If only the border color should be changed use the property `border-color`.

```
.border{ border-color:#D4B5B8 }
```

If you want to add a box shadow in that color use:



Here you see how a box with a 4 pixel #D4B5B8 colored shadow looks like.

```
.boxshadow{ -moz-box-shadow:4px 4px 4px  
4px #D4B5B8; -webkit-box-shadow:4px 4px  
4px 4px #D4B5B8; box-shadow:4px 4px 4px  
4px #D4B5B8 }
```

Background

The CSS property to change the background color of an element to Hex D4B5B8 is called "background". The background property can be set on classes, ids or directly on the HTML element.

```
.background, #background, body{  
background:#D4B5B8 }
```

If only the background color should be changed can be used:

```
.background{ background-color:#D4B5B8 }
```

This example shows the color as background, it is applied via the CSS property "background".

To optimize and compress your CSS code, you can use our [online CSS compressor and optimizer](#) based on csstidy. If you want to create a linear or radial gradient as background or border, check our [CSS Gradient Generator](#).

Hey! You found this booklet interesting? Support Converting Colors with the new Membership Option!

The pro membership hides all ads, plus gives you double the colors in the color bucket, and more awesome pro features!

[Learn more, Memberships starting at \\$2.50/m!](#)

**Follow me
on Twitter!**

@ConvertingColor