

Converting Colors

Hex(D4B5BA)

Have a look what the booklet for
Hex(D4B5BA) contains.

Hex(D4B5BA)	3
<i>Conversions</i>	4
<i>Details</i>	6
<i>Harmonies</i>	11
<i>Previews</i>	23
<i>Color Blindness Simulation</i>	26
<i>CSS Examples</i>	29

Color

Hex(D4B5BA)

Conversions

Conversions Part 1

Format	Color
Hex	D4B5BA
RGB	212, 181, 186
RGB Percent	83%, 71%, 73%
CMY	0.1686, 0.2902, 0.2706
CMYK	0.00, 0.15, 0.12, 0.17
HSL	350°, 26%, 77%
HSV	350°, 15%, 83%
XYZ	52.5382, 50.5900, 53.4502
YIQ	190.8390, 16.8710, 8.1270

Conversions

Conversions Part 2

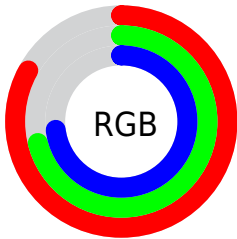
Format	Color
R _Y B	212, 181, 186
Decimal	13940154
CIE Lab	76.43, 11.94, 1.59
CIE LCh	76, 12.045, 7.592
Yxy	50.5900, 0.3355, 0.3231
Android (android.graphics.Color)	4292130234 (0xFFD4B5BA)
YUV	190.8390, -2.3856, 18.5582
Hunter-Lab	71.1266, 7.3787, 5.2335

Details

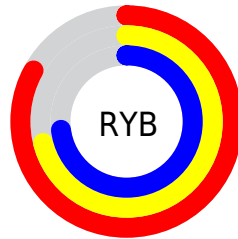
The Hex color **D4B5BA** is a light color, and the websafe version is hex **CC9999**. A complement of this color would be **B5D4CF**, and the grayscale version is **BFBFBF**.

A 20% lighter version of the original color is **FFEDF2**, and **9D8085** is the 20% darker color. If you saturate the color by 10%, you get **D4A0A8**, and if you desaturate by 10%, it is **D4CACC**.

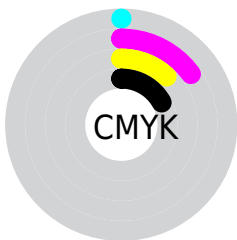
Distribution



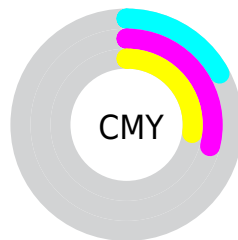
- Red (83%)
- Green (71%)
- Blue (73%)



- Red (83%)
- Yellow (71%)
- Blue (73%)



- Cyan (0%)
- Magenta (15%)
- Yellow (12%)
- Black (17%)



- Cyan (17%)
- Magenta (29%)
- Yellow (27%)

Brightness & Saturation Gradients

These gradients show how the Hex color D4B5BA changes by changing the brightness by 10 percent. The first figure shows a shift by +10% for each color and the second figure -10%.

Similar to the brightness gradients but the following saturation gradients show a change of the Hex color D4B5BA by changing the saturation by 10% instead.

 D4B5BA

FFFFFF

 FFEDF2

 D4B5BA

 B89A9F

 9D8085

 83676C

 694F54

 51383C

 392227

 240D12

 000000

 D4B5BA

 D4B5BA

 D4A0A8

 D4CACC

 D48B96

 D4DFDE

 D47585

 D4F5EF

 D46073

 D4FFFF

 D44B61

 D4364F

 D4213E

 D40B2C

 D40022

Harmonies

Analogous

The Analogous color harmony consists of three colors that are next to each other on the color wheel.



CEB6C5



D4B5BA



D4B6AF

Triad

The Triadic color harmony groups three colors that are evenly spaced from another and form a triangle on the color wheel.



D4B5BA



B6C0AB



A8C0D1

Complementary

The Complementary color scheme is a pair of colors which are on the opposite of each other on the color wheel.



D4B5BA



B5D4CF

Split Complementary

Split-complementary colors differ from the complementary color scheme. The scheme consists of three colors, the original color and two neighbors of the complement color.



A1C2CA



D4B5BA



AAC2B4

Square

The Square scheme is like the rectangle color scheme, but the four colors are evenly spaced on the color wheel.



D4B5BA



C3BDA7



A2C3BF



B4BCD2

Rectangle

The Rectangle color scheme consists of four colors that form a rectangle on the color wheel.



D4B5BA



D0B8AA



A2C3BF



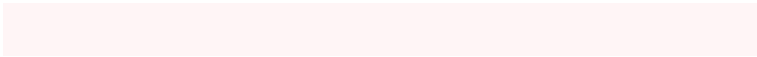
A5C1CF

Sweetspot

The Sweet Spot groups the original color and five complimentary colors.



D4B5BA



FFF5F6



CFB5D4



80797A



000000



808080

Same Dimension

The Same Dimension uses a secret algorithm to generate beautiful new colors.



D4B5BA



FFD1D9



D4BFB5



6B6062



AB001C



2B0007

Inverse Universe

The Inverse Universe completely reimagines the original color for something new.



D4B5BA



FFD1D9



B5CAD4



6B6062



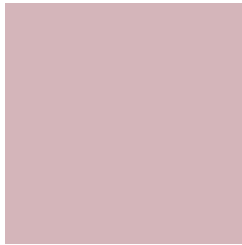
AB001C



2B0007

Previews

White Background



This preview shows how the Hex color D4B5BA looks on a white background.

Color Contrast Check

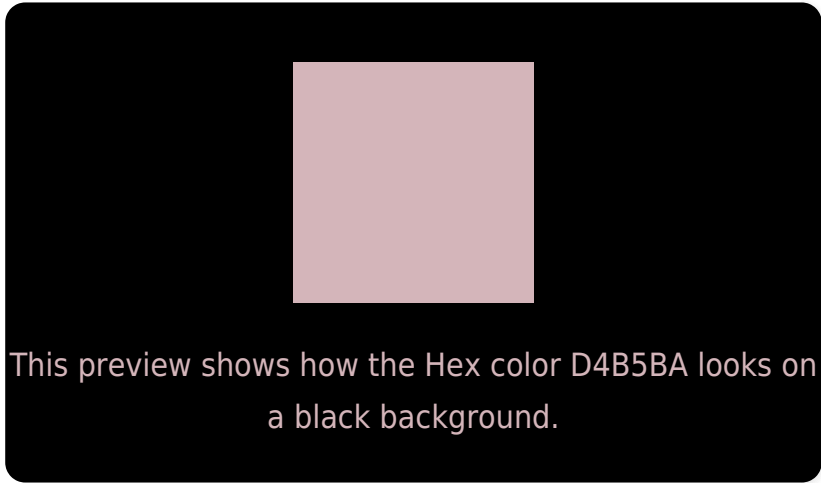
Large Text (above 18pt) WCAG AA × Fail

Any Text WCAG AA × Fail

Large Text (above 18pt) WCAG AAA × Fail

Any Text WCAG AAA × Fail

Black Background



Color Contrast Check

Large Text (above 18pt) WCAG AA ✓ Pass

Any Text WCAG AA ✓ Pass

Large Text (above 18pt) WCAG AAA ✓ Pass

Any Text WCAG AAA ✓ Pass

If you want to check with other color combinations, try the [Color Contrast Checker](#).

Hex D4B5BA Background



This preview shows how black text looks on a background with the Hex color D4B5BA.



This preview shows how white text looks on a background with the Hex color D4B5BA.

Color Blindness Simulation

Color vision deficiency is a very complex topic, and I could not describe the different causes any better than Wikipedia does, so if you want to learn more, you should check out their [article about color blindness](#).

Dichromacy



Original Color
D4B5BA

Protanopia
C0BCBE

Deuteranopia
D0B7BA



Tritanopia
D5B4C2

Trichromacy



Original Color
D4B5BA

Protanomaly
C7B9BD

Deuteranomaly
D1B6BA

Tritanomaly
D5B4BF

Monochromacy



Original Color
D4B5BA

Achromatopsia
BFBFBF

Achromatomaly
C7BBBD

CSS Examples

Text

The CSS property to change the color of the text to Hex D4B5BA is called "color". The color property can be set on classes, ids or directly on the HTML element.

This example shows how text in the color #D4B5BA looks like.

```
.text, #text, p{  
    color:#D4B5BA  
}
```

If you want to add a text shadow in that color use the text-shadow property, you can generate a text shadow directly with our [CSS Text Shadow Generator](#).

Here you see how black text with a 4 pixel #D4B5BA colored shadow looks like.

```
.shadow{ text-shadow: 4px 4px 2px #D4B5BA
}
```

Border

The CSS property to change the border of an element to Hex D4B5BA is called "border". The border property can be set on classes, ids or directly on the HTML element.

This example shows the color as border, it can be applied via the CSS property "border" or "border-color".

```
.border, #border, table{ border:4px solid
#D4B5BA }
```

If only the border color should be changed use the property `border-color`.

```
.border{ border-color:#D4B5BA }
```

If you want to add a box shadow in that color use:

Here you see how a box with a 4 pixel #D4B5BA colored shadow looks like.

```
.boxshadow{ -moz-box-shadow:4px 4px 4px  
4px #D4B5BA; -webkit-box-shadow:4px 4px  
4px 4px #D4B5BA; box-shadow:4px 4px 4px  
4px #D4B5BA }
```

Background

The CSS property to change the background color of an element to Hex D4B5BA is called "background". The background property can be set on classes, ids or directly on the HTML element.

```
.background, #background, body{  
background:#D4B5BA }
```

If only the background color should be changed can be used:

```
.background{ background-color:#D4B5BA }
```

This example shows the color as background, it is applied via the CSS property "background".

To optimize and compress your CSS code, you can use our [online CSS compressor and optimizer](#) based on csstidy. If you want to create a linear or radial gradient as background or border, check our [CSS Gradient Generator](#).

Hey! You found this booklet interesting? Support Converting Colors with the new Membership Option!

The pro membership hides all ads, plus gives you double the colors in the color bucket, and more awesome pro features!

[Learn more, Memberships starting at \\$2.50/m!](#)

**Follow me
on Twitter!**

@ConvertingColor