

Converting Colors

Hex(D4B6AF)

Have a look what the booklet for
Hex(D4B6AF) contains.

Hex(D4B6AF)	3
<i>Conversions</i>	4
<i>Details</i>	6
<i>Harmonies</i>	11
<i>Previews</i>	23
<i>Color Blindness Simulation</i>	26
<i>CSS Examples</i>	29

Color

Hex(D4B6AF)

Conversions

Conversions Part 1

Format	Color
Hex	D4B6AF
RGB	212, 182, 175
RGB Percent	83%, 71%, 69%
CMY	0.1686, 0.2863, 0.3137
CMYK	0.00, 0.14, 0.17, 0.17
HSL	11°, 30%, 76%
HSV	11°, 17%, 83%
XYZ	51.6172, 50.5481, 47.5937
YIQ	190.1720, 20.1270, 4.1830

Conversions

Conversions Part 2

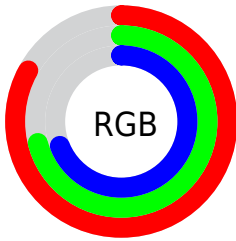
Format	Color
RYB	212, 184, 175
Decimal	13940399
CIELab	76.40, 9.64, 7.53
CIELCh	76, 12.233, 38.015
Yxy	50.5481, 0.3447, 0.3375
Android (android.graphics.Color)	4292130479 (0xFFD4B6AF)
YUV	190.1720, -7.4798, 19.1432
Hunter-Lab	71.0972, 5.1725, 10.0783

Details

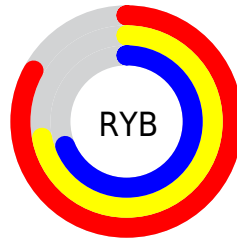
The Hex color **D4B6AF** is a light color, and the websafe version is hex **CC9999**. A complement of this color would be **AFCDD4**, and the grayscale version is **BEBEBE**.

A 20% lighter version of the original color is **FFEEE7**, and **9D817B** is the 20% darker color. If you saturate the color by 10%, you get **D4A59A**, and if you desaturate by 10%, it is **D4C7C4**.

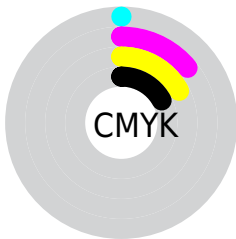
Distribution



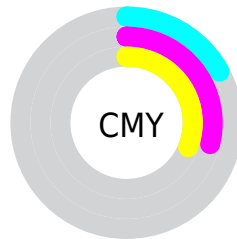
- Red (83%)
- Green (71%)
- Blue (69%)



- Red (83%)
- Yellow (72%)
- Blue (69%)



- Cyan (0%)
- Magenta (14%)
- Yellow (17%)
- Black (17%)



- Cyan (17%)
- Magenta (29%)
- Yellow (31%)

Brightness & Saturation Gradients

These gradients show how the Hex color D4B6AF changes by changing the brightness by 10 percent. The first figure shows a shift by +10% for each color and the second figure -10%.

Similar to the brightness gradients but the following saturation gradients show a change of the Hex color D4B6AF by changing the saturation by 10% instead.

 D4B6AF

FFFFFF

 FFEED7

 D4B6AF

 B89B94

 9D817B

 836862

 69504A

 513933

 39231E

 240E05

 000000

 D4B6AF

 D4B6AF

 D4A59A

 D4C7C4

 D49485

 D4D8D9

 D4826F

 D4EAEF

 D4715A

 D4FBFF

 D46045

 D4FFFF

 D44F30

 D43E1B

 D42C05

 D42800

Harmonies

Analogous

The Analogous color harmony consists of three colors that are next to each other on the color wheel.



D4B5BA



D4B6AF



CEB9A8

Triad

The Triadic color harmony groups three colors that are evenly spaced from another and form a triangle on the color wheel.



D4B6AF



A9C2B4



B4BCD3

Complementary

The Complementary color scheme is a pair of colors which are on the opposite of each other on the color wheel.



D4B6AF



AFCDD4

Split Complementary

Split-complementary colors differ from the complementary color scheme. The scheme consists of three colors, the original color and two neighbors of the complement color.



A8C0D1



D4B6AF



A1C3BF

Square

The Square scheme is like the rectangle color scheme, but the four colors are evenly spaced on the color wheel.



D4B6AF



B6C0AA



A1C2CA



C3B9CE

Rectangle

The Rectangle color scheme consists of four colors that form a rectangle on the color wheel.



D4B6AF



C7BBA6



A1C2CA



B0BED3

Sweetspot

The Sweet Spot groups the original color and five complimentary colors.



D4B6AF



FFF5F2



D4AFCD



807978



000000



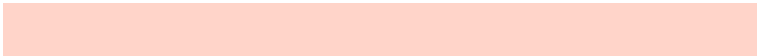
808080

Same Dimension

The Same Dimension uses a secret algorithm to generate beautiful new colors.



D4B6AF



FFD4C9



D4C8AF



6B6260



AB2000



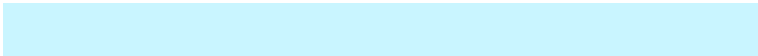
2B0800

Inverse Universe

The Inverse Universe completely reimagines the original color for something new.



AFCDD4



C9F5FF



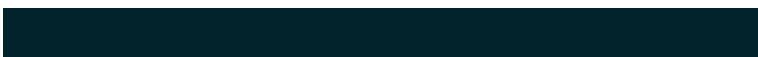
AFBBD4



60696B



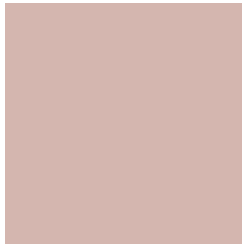
008BAB



00232B

Previews

White Background



This preview shows how the Hex color D4B6AF looks on a white background.

Color Contrast Check

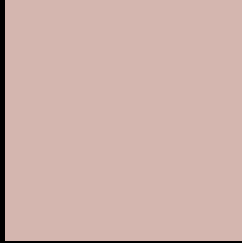
Large Text (above 18pt) WCAG AA × Fail

Any Text WCAG AA × Fail

Large Text (above 18pt) WCAG AAA × Fail

Any Text WCAG AAA × Fail

Black Background



This preview shows how the Hex color D4B6AF looks on a black background.

Color Contrast Check

Large Text (above 18pt) WCAG AA ✓ Pass

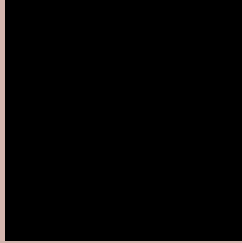
Any Text WCAG AA ✓ Pass

Large Text (above 18pt) WCAG AAA ✓ Pass

Any Text WCAG AAA ✓ Pass

If you want to check with other color combinations, try the [Color Contrast Checker](#).

Hex D4B6AF Background



This preview shows how black text looks on a background with the Hex color D4B6AF.

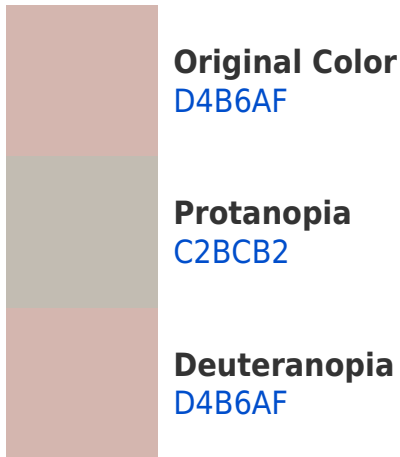


This preview shows how white text looks on a background with the Hex color D4B6AF.

Color Blindness Simulation

Color vision deficiency is a very complex topic, and I could not describe the different causes any better than Wikipedia does, so if you want to learn more, you should check out their [article about color blindness](#).

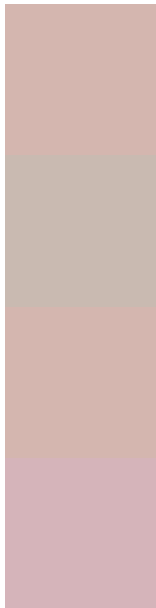
Dichromacy





Tritanopia
D6B3C1

Trichromacy



Original Color
D4B6AF

Protanomaly
C9BAB1

Deuteranomaly
D4B6AF

Tritanomaly
D5B4BA

Monochromacy



Original Color
D4B6AF

Achromatopsia
BEBEBE

Achromatomaly
C6BBB9

CSS Examples

Text

The CSS property to change the color of the text to Hex D4B6AF is called "color". The color property can be set on classes, ids or directly on the HTML element.

This example shows how text in the color #D4B6AF looks like.

```
.text, #text, p{  
    color:#D4B6AF  
}
```

If you want to add a text shadow in that color use the text-shadow property, you can generate a text shadow directly with our [CSS Text Shadow Generator](#).

Here you see how black text with a 4 pixel #D4B6AF colored shadow looks like.

```
.shadow{ text-shadow: 4px 4px 2px #D4B6AF
}
```

Border

The CSS property to change the border of an element to Hex D4B6AF is called "border". The border property can be set on classes, ids or directly on the HTML element.

This example shows the color as border, it can be applied via the CSS property "border" or "border-color".

```
.border, #border, table{ border:4px solid
#D4B6AF }
```

If only the border color should be changed use the property `border-color`.

```
.border{ border-color:#D4B6AF }
```

If you want to add a box shadow in that color use:

Here you see how a box with a 4 pixel #D4B6AF colored shadow looks like.

```
.boxshadow{ -moz-box-shadow:4px 4px 4px  
4px #D4B6AF; -webkit-box-shadow:4px 4px  
4px 4px #D4B6AF; box-shadow:4px 4px 4px  
4px #D4B6AF }
```

Background

The CSS property to change the background color of an element to Hex D4B6AF is called "background". The background property can be set on classes, ids or directly on the HTML element.

```
.background, #background, body{  
background:#D4B6AF }
```

If only the background color should be changed can be used:

```
.background{ background-color:#D4B6AF }
```

This example shows the color as background, it is applied via the CSS property "background".

To optimize and compress your CSS code, you can use our [online CSS compressor and optimizer](#) based on csstidy. If you want to create a linear or radial gradient as background or border, check our [CSS Gradient Generator](#).

Hey! You found this booklet interesting? Support Converting Colors with the new Membership Option!

The pro membership hides all ads, plus gives you double the colors in the color bucket, and more awesome pro features!

[Learn more, Memberships starting at \\$2.50/m!](#)

**Follow me
on Twitter!**

@ConvertingColor