

Converting Colors

Hex(D4B7AF)

Have a look what the booklet for
Hex(D4B7AF) contains.

Hex(D4B7AF)	3
<i>Conversions</i>	4
<i>Details</i>	6
<i>Harmonies</i>	11
<i>Previews</i>	23
<i>Color Blindness Simulation</i>	26
<i>CSS Examples</i>	29

Color

Hex(D4B7AF)

Conversions

Conversions Part 1

Format	Color
Hex	D4B7AF
RGB	212, 183, 175
RGB Percent	83%, 72%, 69%
CMY	0.1686, 0.2824, 0.3137
CMYK	0.00, 0.14, 0.17, 0.17
HSL	13°, 30%, 76%
HSV	13°, 17%, 83%
XYZ	51.8227, 50.9592, 47.6622
YIQ	190.7590, 19.8520, 3.6600

Conversions

Conversions Part 2

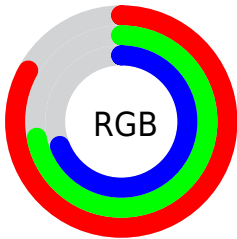
Format	Color
R _Y B	212, 185, 175
Decimal	13940655
CIE Lab	76.65, 9.10, 7.89
CIE LCh	77, 12.047, 40.927
Yxy	50.9592, 0.3445, 0.3387
Android (android.graphics.Color)	4292130735 (0xFFD4B7AF)
YUV	190.7590, -7.7692, 18.6284
Hunter-Lab	71.3857, 4.6578, 10.3837

Details

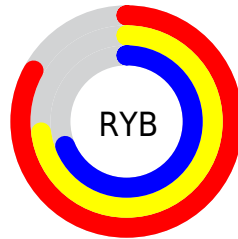
The Hex color **D4B7AF** is a light color, and the websafe version is hex **CCCCCC**. A complement of this color would be **AFCCD4**, and the grayscale version is **BFBFBF**.

A 20% lighter version of the original color is **FFEFE7**, and **9D827B** is the 20% darker color. If you saturate the color by 10%, you get **D4A69A**, and if you desaturate by 10%, it is **D4C8C4**.

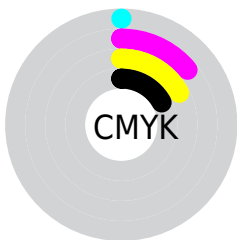
Distribution



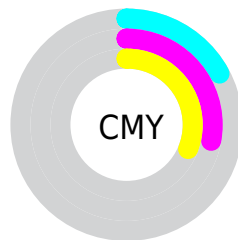
- Red (83%)
- Green (72%)
- Blue (69%)



- Red (83%)
- Yellow (73%)
- Blue (69%)



- Cyan (0%)
- Magenta (14%)
- Yellow (17%)
- Black (17%)



- Cyan (17%)
- Magenta (28%)
- Yellow (31%)

Brightness & Saturation Gradients

These gradients show how the Hex color D4B7AF changes by changing the brightness by 10 percent. The first figure shows a shift by +10% for each color and the second figure -10%.

Similar to the brightness gradients but the following saturation gradients show a change of the Hex color D4B7AF by changing the saturation by 10% instead.

 D4B7AF

FFFFFF

 FFEFE7

 D4B7AF

 B89C94

 9D827B

 836962

 69514A

 513A33

 39241E

 240F05

 000000

 D4B7AF

 D4B7AF

 D4A69A

 D4C8C4

 D49685

 D4D8D9

 D4856F

 D4E9EF

 D4755A

 D4F9FF

 D46445

 D4FFFF

 D45330

 D4431B

 D43205

 D42E00

Harmonies

Analogous

The Analogous color harmony consists of three colors that are next to each other on the color wheel.



D5B6B9



D4B7AF



CDBAA8

Triad

The Triadic color harmony groups three colors that are evenly spaced from another and form a triangle on the color wheel.



D4B7AF



A9C3B6



B6BDD3

Complementary

The Complementary color scheme is a pair of colors which are on the opposite of each other on the color wheel.



D4B7AF



AFCCD4

Split Complementary

Split-complementary colors differ from the complementary color scheme. The scheme consists of three colors, the original color and two neighbors of the complement color.



AAC0D2



D4B7AF



A2C4C1

Square

The Square scheme is like the rectangle color scheme, but the four colors are evenly spaced on the color wheel.



D4B7AF



B5C1AC



A2C3CB



C4B9CE

Rectangle

The Rectangle color scheme consists of four colors that form a rectangle on the color wheel.



D4B7AF



C6BCA7



A2C3CB



B2BED3

Sweetspot

The Sweet Spot groups the original color and five complimentary colors.



D4B7AF



FFF5F2



D4AFCD



807A78



000000



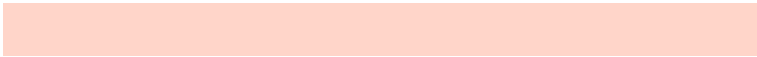
808080

Same Dimension

The Same Dimension uses a secret algorithm to generate beautiful new colors.



D4B7AF



FFD5C9



D4C9AF



6B6360



AB2500



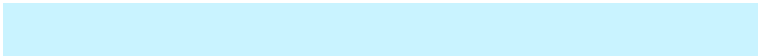
2B0900

Inverse Universe

The Inverse Universe completely reimagines the original color for something new.



AFCCD4



C9F3FF



AFBAD4



60696B



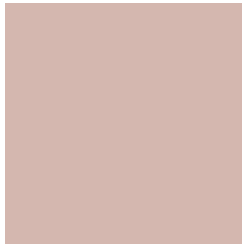
0086AB



00222B

Previews

White Background



This preview shows how the Hex color D4B7AF looks on a white background.

Color Contrast Check

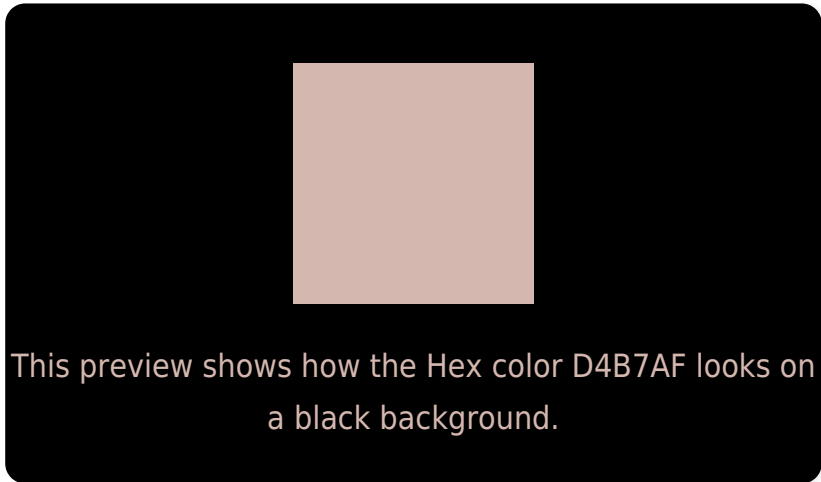
Large Text (above 18pt) WCAG AA × Fail

Any Text WCAG AA × Fail

Large Text (above 18pt) WCAG AAA × Fail

Any Text WCAG AAA × Fail

Black Background



Color Contrast Check

Large Text (above 18pt) WCAG AA ✓ Pass

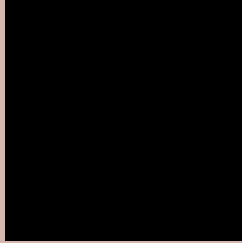
Any Text WCAG AA ✓ Pass

Large Text (above 18pt) WCAG AAA ✓ Pass

Any Text WCAG AAA ✓ Pass

If you want to check with other color combinations, try the [Color Contrast Checker](#).

Hex D4B7AF Background



This preview shows how black text looks on a background with the Hex color D4B7AF.

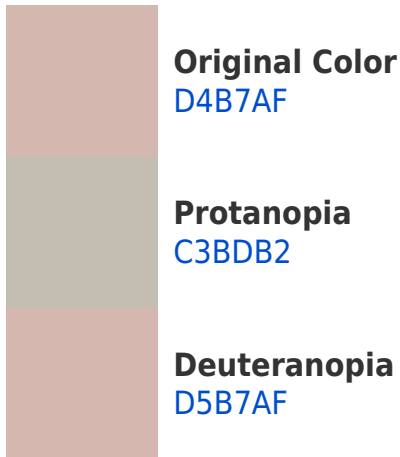


This preview shows how white text looks on a background with the Hex color D4B7AF.

Color Blindness Simulation

Color vision deficiency is a very complex topic, and I could not describe the different causes any better than Wikipedia does, so if you want to learn more, you should check out their [article about color blindness](#).

Dichromacy





Tritanopia
D6B4C2

Trichromacy



Original Color
D4B7AF

Protanomaly
C9BBB1

Deuteranomaly
D5B7AF

Tritanomaly
D5B5BB

Monochromacy



Original Color
D4B7AF

Achromatopsia
BFBFBF

Achromatomaly
C7BCB9

CSS Examples

Text

The CSS property to change the color of the text to Hex D4B7AF is called "color". The color property can be set on classes, ids or directly on the HTML element.

This example shows how text in the color #D4B7AF looks like.

```
.text, #text, p{  
    color:#D4B7AF  
}
```

If you want to add a text shadow in that color use the text-shadow property, you can generate a text shadow directly with our [CSS Text Shadow Generator](#).

Here you see how black text with a 4 pixel #D4B7AF colored shadow looks like.

```
.shadow{ text-shadow: 4px 4px 2px #D4B7AF
}
```

Border

The CSS property to change the border of an element to Hex D4B7AF is called "border". The border property can be set on classes, ids or directly on the HTML element.

This example shows the color as border, it can be applied via the CSS property "border" or "border-color".

```
.border, #border, table{ border:4px solid
#D4B7AF }
```

If only the border color should be changed use the property `border-color`.

```
.border{ border-color:#D4B7AF }
```

If you want to add a box shadow in that color use:

Here you see how a box with a 4 pixel #D4B7AF colored shadow looks like.

```
.boxshadow{ -moz-box-shadow:4px 4px 4px  
4px #D4B7AF; -webkit-box-shadow:4px 4px  
4px 4px #D4B7AF; box-shadow:4px 4px 4px  
4px #D4B7AF }
```

Background

The CSS property to change the background color of an element to Hex D4B7AF is called "background". The background property can be set on classes, ids or directly on the HTML element.

```
.background, #background, body{  
background:#D4B7AF }
```

If only the background color should be changed can be used:

```
.background{ background-color:#D4B7AF }
```

This example shows the color as background, it is applied via the CSS property "background".

To optimize and compress your CSS code, you can use our [online CSS compressor and optimizer](#) based on csstidy. If you want to create a linear or radial gradient as background or border, check our [CSS Gradient Generator](#).

Hey! You found this booklet interesting? Support Converting Colors with the new Membership Option!

The pro membership hides all ads, plus gives you double the colors in the color bucket, and more awesome pro features!

[Learn more, Memberships starting at \\$2.50/m!](#)

**Follow me
on Twitter!**

@ConvertingColor