

# Converting Colors

Hex(D4B9AF)

Have a look what the booklet for  
Hex(D4B9AF) contains.

<b>Hex(D4B9AF)</b> .....	3
<i><b>Conversions</b></i> .....	4
<i><b>Details</b></i> .....	6
<i><b>Harmonies</b></i> .....	11
<i><b>Previews</b></i> .....	23
<i><b>Color Blindness Simulation</b></i> .....	26
<i><b>CSS Examples</b></i> .....	29

# **Color**

**Hex(D4B9AF)**

# Conversions

## Conversions Part 1

Format	Color
Hex	D4B9AF
RGB	212, 185, 175
RGB Percent	83%, 73%, 69%
CMY	0.1686, 0.2745, 0.3137
CMYK	0.00, 0.13, 0.17, 0.17
HSL	16°, 30%, 76%
HSV	16°, 17%, 83%
XYZ	52.2382, 51.7901, 47.8007
YIQ	191.9330, 19.3020, 2.6140

# Conversions

## Conversions Part 2

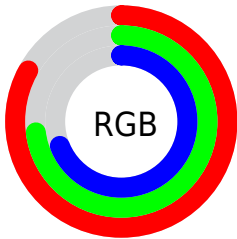
Format	Color
R <sub>Y</sub> B	212, 189, 175
Decimal	13941167
CIE Lab	77.16, 8.03, 8.61
CIE LCh	77, 11.773, 46.986
Yxy	51.7901, 0.3441, 0.3411
Android (android.graphics.Color)	4292131247 (0xFFD4B9AF)
YUV	191.9330, -8.3480, 17.5988
Hunter-Lab	71.9654, 3.6302, 10.9943

# Details

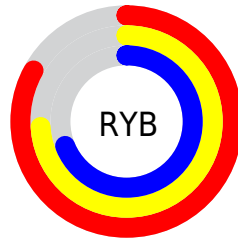
The Hex color **D4B9AF** is a light color, and the websafe version is hex **CCCCCC**. A complement of this color would be **AFCAD4**, and the grayscale version is **C0C0C0**.

A 20% lighter version of the original color is **FFF1E7**, and **9D847B** is the 20% darker color. If you saturate the color by 10%, you get **D4AA9A**, and if you desaturate by 10%, it is **D4C8C4**.

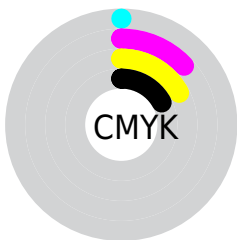
# Distribution



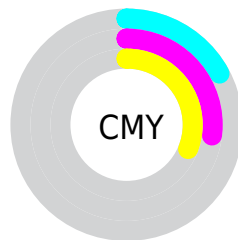
- Red (83%)
- Green (73%)
- Blue (69%)



- Red (83%)
- Yellow (74%)
- Blue (69%)



- Cyan (0%)
- Magenta (13%)
- Yellow (17%)
- Black (17%)



- Cyan (17%)
- Magenta (27%)
- Yellow (31%)

# Brightness & Saturation Gradients

These gradients show how the Hex color D4B9AF changes by changing the brightness by 10 percent. The first figure shows a shift by +10% for each color and the second figure -10%.

Similar to the brightness gradients but the following saturation gradients show a change of the Hex color D4B9AF by changing the saturation by 10% instead.



 D4B9AF

FFFFFF

 FFF1E7

 D4B9AF

 B89E94

 9D847B

 836B62

 69534A

 513B33

 39261E

 241106

 000000

 D4B9AF

 D4B9AF

 D4AA9A

 D4C8C4

 D49A85

 D4D8D9

 D48B6F

 D4E7EF

 D47B5A

 D4F7FF

 D46C45

 D4FFFF

 D45C30

 D44D1B

 D43D05

 D43900

# Harmonies

## Analogous

The Analogous color harmony consists of three colors that are next to each other on the color wheel.



D6B7B9



D4B9AF



CCBCAA

# Triad

The Triadic color harmony groups three colors that are evenly spaced from another and form a triangle on the color wheel.



D4B9AF



A9C5B9



BBDD3

# Complementary

The Complementary color scheme is a pair of colors which are on the opposite of each other on the color wheel.



D4B9AF



AFCAD4

# Split Complementary

Split-complementary colors differ from the complementary color scheme. The scheme consists of three colors, the original color and two neighbors of the complement color.



AEC1D3



D4B9AF



A4C5C4

# Square

The Square scheme is like the rectangle color scheme, but the four colors are evenly spaced on the color wheel.



D4B9AF



B4C3AF



A5C4CE



C8BACD

# Rectangle

The Rectangle color scheme consists of four colors that form a rectangle on the color wheel.



D4B9AF



C5BFA9



A5C4CE



B6BFD4

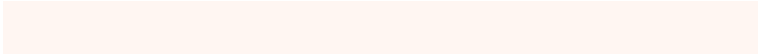


# Sweetspot

The Sweet Spot groups the original color and five complimentary colors.



D4B9AF



FFF6F2



D4AFCA



807A78



000000



808080



# Same Dimension

The Same Dimension uses a secret algorithm to generate beautiful new colors.



D4B9AF



FFD8C9



D4CBAF



6B6360



AB2E00



2B0C00

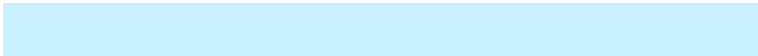


# Inverse Universe

The Inverse Universe completely reimagines the original color for something new.



AFCAD4



C9F1FF



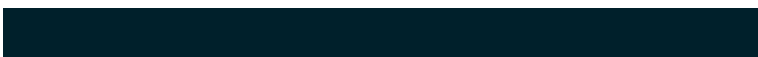
AFB8D4



60686B



007DAB

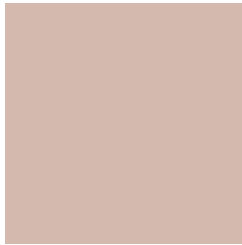


00202B



# Previews

## White Background



This preview shows how the Hex color D4B9AF looks on a white background.

## Color Contrast Check

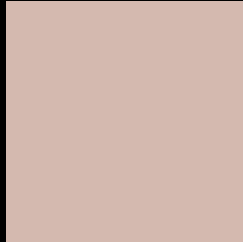
Large Text (above 18pt) WCAG AA × Fail

Any Text WCAG AA × Fail

Large Text (above 18pt) WCAG AAA × Fail

Any Text WCAG AAA × Fail

# Black Background



This preview shows how the Hex color D4B9AF looks on a black background.

## Color Contrast Check

Large Text (above 18pt) WCAG AA ✓ Pass

Any Text WCAG AA ✓ Pass

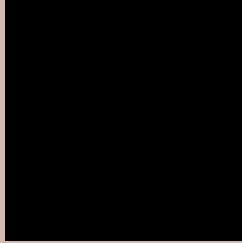
Large Text (above 18pt) WCAG AAA ✓ Pass

Any Text WCAG AAA ✓ Pass

If you want to check with other color combinations, try the [Color Contrast Checker](#).



## Hex D4B9AF Background



This preview shows how black text looks on a background with the Hex color D4B9AF.

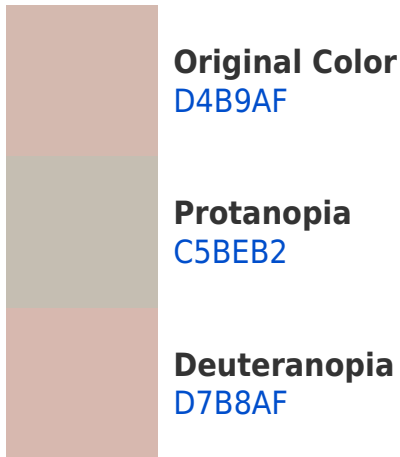


This preview shows how white text looks on a background with the Hex color D4B9AF.

# Color Blindness Simulation

Color vision deficiency is a very complex topic, and I could not describe the different causes any better than Wikipedia does, so if you want to learn more, you should check out their [article about color blindness](#).

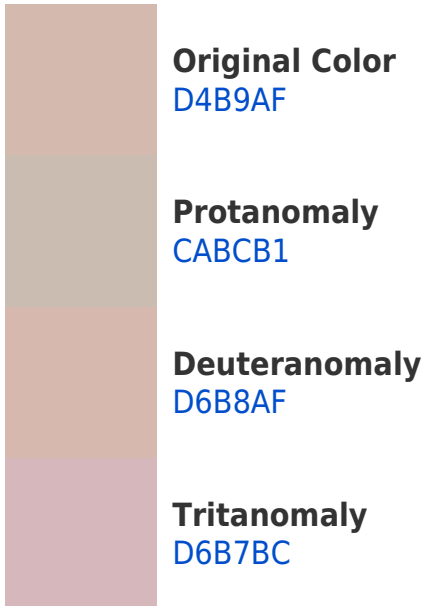
## Dichromacy



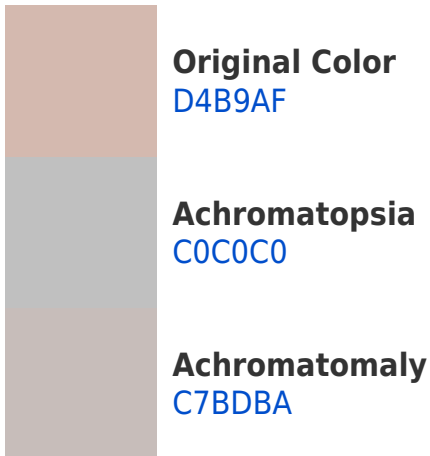


**Tritanopia**  
D7B6C4

# Trichromacy



# Monochromacy



# CSS Examples

## Text

The CSS property to change the color of the text to Hex D4B9AF is called "color". The color property can be set on classes, ids or directly on the HTML element.

This example shows how text in the color #D4B9AF looks like.

```
.text, #text, p{  
    color:#D4B9AF  
}
```

If you want to add a text shadow in that color use the text-shadow property, you can generate a text shadow directly with our [CSS Text Shadow Generator](#).

Here you see how black text with a 4 pixel #D4B9AF colored shadow looks like.

```
.shadow{ text-shadow: 4px 4px 2px #D4B9AF  
}
```

## Border

The CSS property to change the border of an element to Hex D4B9AF is called "border". The border property can be set on classes, ids or directly on the HTML element.

This example shows the color as border, it can be applied via the CSS property "border" or "border-color".

```
.border, #border, table{ border:4px solid  
#D4B9AF }
```

If only the border color should be changed use the property `border-color`.

```
.border{ border-color:#D4B9AF }
```

If you want to add a box shadow in that color use:

Here you see how a box with a 4 pixel #D4B9AF colored shadow looks like.

```
.boxshadow{ -moz-box-shadow:4px 4px 4px  
4px #D4B9AF; -webkit-box-shadow:4px 4px  
4px 4px #D4B9AF; box-shadow:4px 4px 4px  
4px #D4B9AF }
```

# Background

The CSS property to change the background color of an element to Hex D4B9AF is called "background". The background property can be set on classes, ids or directly on the HTML element.

```
.background, #background, body{  
background:#D4B9AF }
```

If only the background color should be changed can be used:

```
.background{ background-color:#D4B9AF }
```

This example shows the color as background, it is applied via the CSS property "background".

To optimize and compress your CSS code, you can use our [online CSS compressor and optimizer](#) based on csstidy. If you want to create a linear or radial gradient as background or border, check our [CSS Gradient Generator](#).



Hey! You found this booklet interesting? Support Converting Colors with the new Membership Option!

The pro membership hides all ads, plus gives you double the colors in the color bucket, and more awesome pro features!

**[Learn more, Memberships starting at \\$2.50/m!](#)**

**Follow me  
on Twitter!**

@ConvertingColor