

Converting Colors

Hex(D4BAA6)

Have a look what the booklet for
Hex(D4BAA6) contains.

Hex(D4BAA6)	3
<i>Conversions</i>	4
<i>Details</i>	6
<i>Harmonies</i>	11
<i>Previews</i>	23
<i>Color Blindness Simulation</i>	26
<i>CSS Examples</i>	29

Color

Hex(D4BAA6)

Conversions

Conversions Part 1

Format	Color
Hex	D4BAA6
RGB	212, 186, 166
RGB Percent	83%, 73%, 65%
CMY	0.1686, 0.2706, 0.3490
CMYK	0.00, 0.12, 0.22, 0.17
HSL	26°, 35%, 74%
HSV	26°, 22%, 83%
XYZ	51.5932, 51.8680, 43.3687
YIQ	191.4940, 21.9160, -0.7080

Conversions

Conversions Part 2

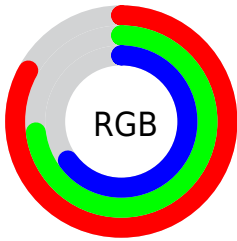
Format	Color
R _Y B	212, 201, 166
Decimal	13941414
CIE Lab	77.20, 6.14, 13.54
CIE LCh	77, 14.866, 65.616
Yxy	51.8680, 0.3514, 0.3533
Android (android.graphics.Color)	4292131494 (0xFFD4BAA6)
YUV	191.4940, -12.5685, 17.9838
Hunter-Lab	72.0195, 1.8396, 14.7104

Details

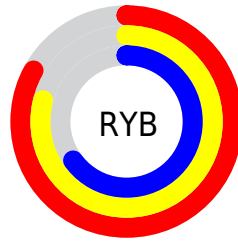
The Hex color **D4BAA6** is a light color, and the websafe version is hex **CCCCCC**. A complement of this color would be **A6C0D4**, and the grayscale version is **C0C0C0**.

A 20% lighter version of the original color is **FFF2DD**, and **9D8572** is the 20% darker color. If you saturate the color by 10%, you get **D4AE91**, and if you desaturate by 10%, it is **D4C6BB**.

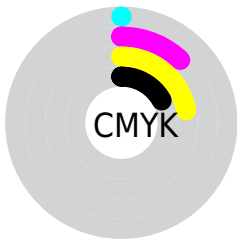
Distribution



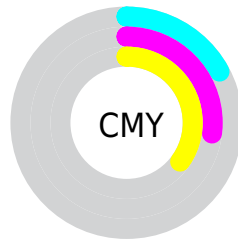
- Red (83%)
- Green (73%)
- Blue (65%)



- Red (83%)
- Yellow (79%)
- Blue (65%)



- Cyan (0%)
- Magenta (12%)
- Yellow (22%)
- Black (17%)



- Cyan (17%)
- Magenta (27%)
- Yellow (35%)

Brightness & Saturation Gradients

These gradients show how the Hex color D4BAA6 changes by changing the brightness by 10 percent. The first figure shows a shift by +10% for each color and the second figure -10%.

Similar to the brightness gradients but the following saturation gradients show a change of the Hex color D4BAA6 by changing the saturation by 10% instead.

 D4BAA6

 D4BAA6

FFFFFF

 B89F8C

 FFF2DD

 9D8572

 FFFFFA

 826C5A

 695342

 503C2C

 382717

 231200

 000000

 D4BAA6

 D4BAA6

 D4AE91

 D4C6BB

 D4A27C

 D4D2D0

 D49666

 D4DEE6

 D48A51

 D4EAFB

 D47E3C

 D4F6FF

 D47227

 D4FFFF

 D46612

 D45C00

Harmonies

Analogous

The Analogous color harmony consists of three colors that are next to each other on the color wheel.



DBB7AF



D4BAA6



C7BFA3

Triad

The Triadic color harmony groups three colors that are evenly spaced from another and form a triangle on the color wheel.



D4BAA6



9EC7C1



C5BAD5

Complementary

The Complementary color scheme is a pair of colors which are on the opposite of each other on the color wheel.



D4BAA6



A6C0D4

Split Complementary

Split-complementary colors differ from the complementary color scheme. The scheme consists of three colors, the original color and two neighbors of the complement color.



B3BFDA



D4BAA6



9CC6CE

Square

The Square scheme is like the rectangle color scheme, but the four colors are evenly spaced on the color wheel.



D4BAA6



A8C6B3



A4C3D7



D3B7CA

Rectangle

The Rectangle color scheme consists of four colors that form a rectangle on the color wheel.



D4BAA6



BDC1A6



A4C3D7



BFBCD7

Sweetspot

The Sweet Spot groups the original color and five complimentary colors.



D4BAA6



FFF5ED



D4A6C0



807A75



000000



808080

Same Dimension

The Same Dimension uses a secret algorithm to generate beautiful new colors.



D4BAA6



FFDABD



D4D1A6



6B6560



AB4A00



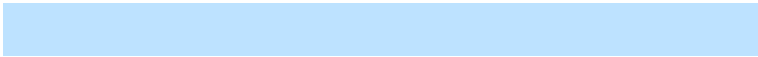
2B1300

Inverse Universe

The Inverse Universe completely reimagines the original color for something new.



A6C0D4



BDE2FF



A6A9D4



60666B



0061AB



00192B

Previews

White Background



This preview shows how the Hex color D4BAA6 looks on a white background.

Color Contrast Check

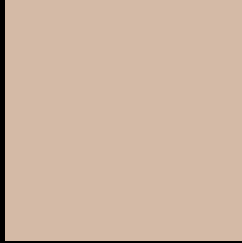
Large Text (above 18pt) WCAG AA × Fail

Any Text WCAG AA × Fail

Large Text (above 18pt) WCAG AAA × Fail

Any Text WCAG AAA × Fail

Black Background



This preview shows how the Hex color D4BAA6 looks on a black background.

Color Contrast Check

Large Text (above 18pt) WCAG AA ✓ Pass

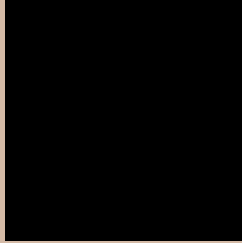
Any Text WCAG AA ✓ Pass

Large Text (above 18pt) WCAG AAA ✓ Pass

Any Text WCAG AAA ✓ Pass

If you want to check with other color combinations, try the [Color Contrast Checker](#).

Hex D4BAA6 Background



This preview shows how black text looks on a background with the Hex color D4BAA6.

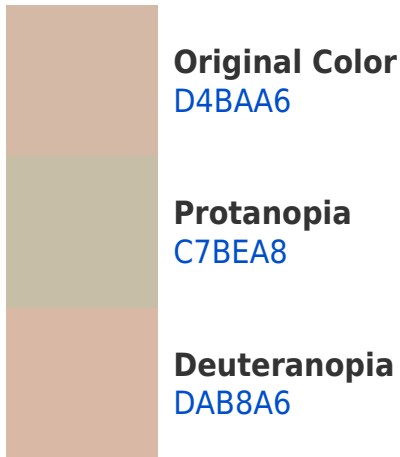


This preview shows how white text looks on a background with the Hex color D4BAA6.

Color Blindness Simulation

Color vision deficiency is a very complex topic, and I could not describe the different causes any better than Wikipedia does, so if you want to learn more, you should check out their [article about color blindness](#).

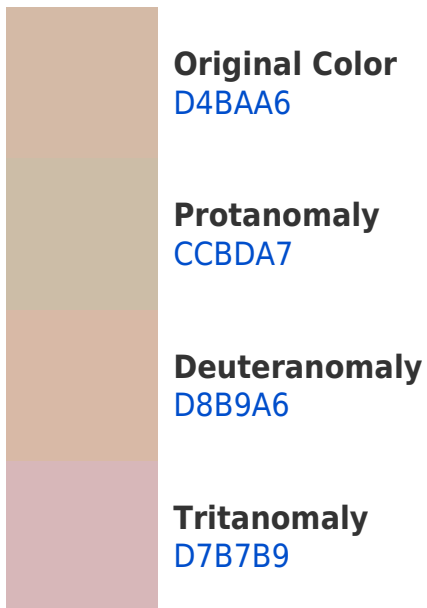
Dichromacy



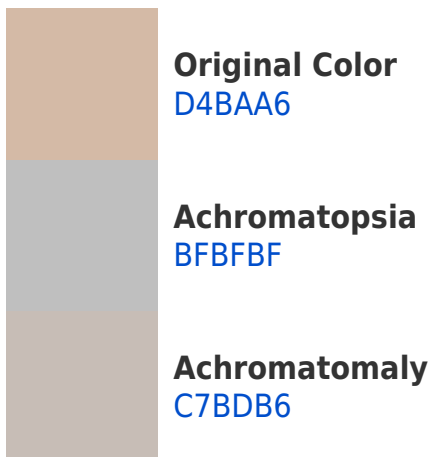


Tritanopia
D8B6C4

Trichromacy



Monochromacy



CSS Examples

Text

The CSS property to change the color of the text to Hex D4BAA6 is called "color". The color property can be set on classes, ids or directly on the HTML element.

This example shows how text in the color #D4BAA6 looks like.

```
.text, #text, p{  
    color:#D4BAA6  
}
```

If you want to add a text shadow in that color use the text-shadow property, you can generate a text shadow directly with our [CSS Text Shadow Generator](#).

Here you see how black text with a 4 pixel #D4BAA6 colored shadow looks like.

```
.shadow{ text-shadow: 4px 4px 2px #D4BAA6 }  
}
```

Border

The CSS property to change the border of an element to Hex D4BAA6 is called "border". The border property can be set on classes, ids or directly on the HTML element.

This example shows the color as border, it can be applied via the CSS property "border" or "border-color".

```
.border, #border, table{ border:4px solid #D4BAA6 }  
}
```

If only the border color should be changed use the property `border-color`.

```
.border{ border-color:#D4BAA6 }
```

If you want to add a box shadow in that color use:

Here you see how a box with a 4 pixel #D4BAA6 colored shadow looks like.

```
.boxshadow{ -moz-box-shadow:4px 4px 4px  
4px #D4BAA6; -webkit-box-shadow:4px 4px  
4px 4px #D4BAA6; box-shadow:4px 4px 4px  
4px #D4BAA6 }
```

Background

The CSS property to change the background color of an element to Hex D4BAA6 is called "background". The background property can be set on classes, ids or directly on the HTML element.

```
.background, #background, body{  
background:#D4BAA6 }
```

If only the background color should be changed can be used:

```
.background{ background-color:#D4BAA6 }
```

This example shows the color as background, it is applied via the CSS property "background".

To optimize and compress your CSS code, you can use our [online CSS compressor and optimizer](#) based on csstidy. If you want to create a linear or radial gradient as background or border, check our [CSS Gradient Generator](#).

Hey! You found this booklet interesting? Support Converting Colors with the new Membership Option!

The pro membership hides all ads, plus gives you double the colors in the color bucket, and more awesome pro features!

[Learn more, Memberships starting at \\$2.50/m!](#)

**Follow me
on Twitter!**

@ConvertingColor