

Converting Colors

Hex(D4BEBF)

Have a look what the booklet for
Hex(D4BEBF) contains.

Hex(D4BEBF)	3
<i>Conversions</i>	4
<i>Details</i>	6
<i>Harmonies</i>	11
<i>Previews</i>	23
<i>Color Blindness Simulation</i>	26
<i>CSS Examples</i>	29

Color

Hex(D4BEBF)

Conversions

Conversions Part 1

Format	Color
Hex	D4BEBF
RGB	212, 190, 191
RGB Percent	83%, 75%, 75%
CMY	0.1686, 0.2549, 0.2510
CMYK	0.00, 0.10, 0.10, 0.17
HSL	357°, 20%, 79%
HSV	357°, 10%, 83%
XYZ	54.9688, 54.5855, 56.9291
YIQ	196.6920, 12.7910, 4.9750

Conversions

Conversions Part 2

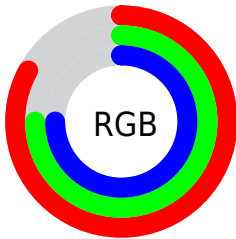
Format	Color
R _Y B	212, 190, 191
Decimal	13942463
CIE Lab	78.80, 7.95, 2.33
CIE LCh	79, 8.283, 16.335
Yxy	54.5855, 0.3302, 0.3279
Android (android.graphics.Color)	4292132543 (0xFFD4BEBF)
YUV	196.6920, -2.8062, 13.4251
Hunter-Lab	73.8820, 3.5118, 6.0321

Details

The Hex color **D4BEBF** is a light color, and the websafe version is hex **CCCCCC**. A complement of this color would be **BED4D3**, and the grayscale version is **C5C5C5**.

A 20% lighter version of the original color is **FFF6F7**, and **9D898A** is the 20% darker color. If you saturate the color by 10%, you get **D4A9AB**, and if you desaturate by 10%, it is **D4D3D3**.

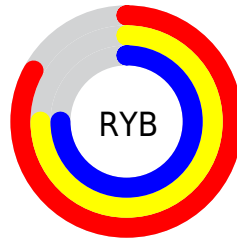
Distribution



Red (83%)

Green (75%)

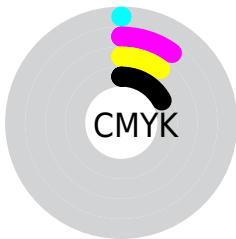
Blue (75%)



Red (83%)

Yellow (75%)

Blue (75%)

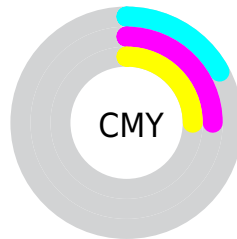


Cyan (0%)

Magenta (10%)

Yellow (10%)

Black (17%)



Cyan (17%)

Magenta (25%)

Yellow (25%)

Brightness & Saturation Gradients

These gradients show how the Hex color D4BEBF changes by changing the brightness by 10 percent. The first figure shows a shift by +10% for each color and the second figure -10%.

Similar to the brightness gradients but the following saturation gradients show a change of the Hex color D4BEBF by changing the saturation by 10% instead.

 D4BEBF

FFFFFF

 FFF6F7

 D4BEBF

 B8A3A4

 9D898A

 836F70

 6A5758

 514041

 3A2A2B

 241516

 070000

 000000

 D4BEBF

 D4BEBF

 D4A9AB

 D4D3D3

 D49497

 D4E8E7

 D47E82

 D4FEFC

 D4696E

 D4FFFF

 D4545A

 D43F46

 D42A31

 D4141D

 D4000A

Harmonies

Analogous

The Analogous color harmony consists of three colors that are next to each other on the color wheel.



D1BEC7



D4BEBF



D3BFB8

Triad

The Triadic color harmony groups three colors that are evenly spaced from another and form a triangle on the color wheel.



D4BEBF



BCC6B8



B7C5D2

Complementary

The Complementary color scheme is a pair of colors which are on the opposite of each other on the color wheel.



D4BEBF



BED4D3

Split Complementary

Split-complementary colors differ from the complementary color scheme. The scheme consists of three colors, the original color and two neighbors of the complement color.



B2C7CE



D4BEBF



B4C7BF

Square

The Square scheme is like the rectangle color scheme, but the four colors are evenly spaced on the color wheel.



D4BEBF



C5C4B4



B0C8C7



C0C2D2

Rectangle

The Rectangle color scheme consists of four colors that form a rectangle on the color wheel.



D4BEBF



CFC1B5



B0C8C7



B5C6D1

Sweetspot

The Sweet Spot groups the original color and five complimentary colors.



D4BEBF



FFF7F8



D3BED4



807A7B



000000



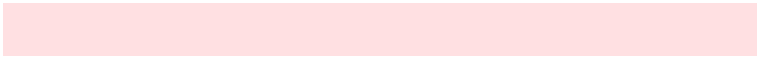
808080

Same Dimension

The Same Dimension uses a secret algorithm to generate beautiful new colors.



D4BEBF



FFE0E2



D4C8BE



6B6061



AB0008



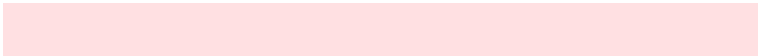
2B0002

Inverse Universe

The Inverse Universe completely reimagines the original color for something new.



D4BEBF



FFE0E2



BECAD4



6B6061



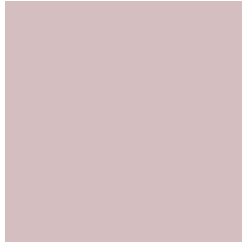
AB0008



2B0002

Previews

White Background



This preview shows how the Hex color D4BEBF looks on a white background.

Color Contrast Check

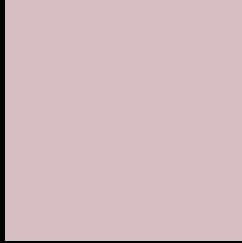
Large Text (above 18pt) WCAG AA × Fail

Any Text WCAG AA × Fail

Large Text (above 18pt) WCAG AAA × Fail

Any Text WCAG AAA × Fail

Black Background



This preview shows how the Hex color D4BEBF looks on a black background.

Color Contrast Check

Large Text (above 18pt) WCAG AA ✓ Pass

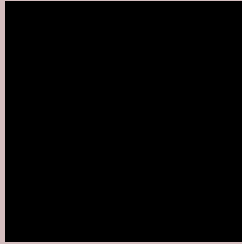
Any Text WCAG AA ✓ Pass

Large Text (above 18pt) WCAG AAA ✓ Pass

Any Text WCAG AAA ✓ Pass

If you want to check with other color combinations, try the [Color Contrast Checker](#).

Hex D4BEBF Background



This preview shows how black text looks on a background with the Hex color D4BEBF.



This preview shows how white text looks on a background with the Hex color D4BEBF.

Color Blindness Simulation

Color vision deficiency is a very complex topic, and I could not describe the different causes any better than Wikipedia does, so if you want to learn more, you should check out their [article about color blindness](#).

Dichromacy





Tritanopia
D6BCCB

Trichromacy



Original Color
D4BEBF

Protanomaly
CCC1C0

Deuteranomaly
D6BDBF

Tritanomaly
D5BDC7

Monochromacy



Original Color
D4BEBF

Achromatopsia
C5C5C5

Achromatomaly
CAC2C3

CSS Examples

Text

The CSS property to change the color of the text to Hex D4BEBF is called "color". The color property can be set on classes, ids or directly on the HTML element.

This example shows how text in the color #D4BEBF looks like.

```
.text, #text, p{  
    color:#D4BEBF  
}
```

If you want to add a text shadow in that color use the text-shadow property, you can generate a text shadow directly with our [CSS Text Shadow Generator](#).

Here you see how black text with a 4 pixel #D4BEBF colored shadow looks like.

```
.shadow{ text-shadow: 4px 4px 2px #D4BEBF
}
```

Border

The CSS property to change the border of an element to Hex D4BEBF is called "border". The border property can be set on classes, ids or directly on the HTML element.

This example shows the color as border, it can be applied via the CSS property "border" or "border-color".

```
.border, #border, table{ border:4px solid
#D4BEBF }
```

If only the border color should be changed use the property `border-color`.

```
.border{ border-color:#D4BEBF }
```

If you want to add a box shadow in that color use:

Here you see how a box with a 4 pixel #D4BEBF colored shadow looks like.

```
.boxshadow{ -moz-box-shadow:4px 4px 4px  
4px #D4BEBF; -webkit-box-shadow:4px 4px  
4px 4px #D4BEBF; box-shadow:4px 4px 4px  
4px #D4BEBF }
```

Background

The CSS property to change the background color of an element to Hex D4BEBF is called "background". The background property can be set on classes, ids or directly on the HTML element.

```
.background, #background, body{  
background:#D4BEBF }
```

If only the background color should be changed can be used:

```
.background{ background-color:#D4BEBF }
```

This example shows the color as background, it is applied via the CSS property "background".

To optimize and compress your CSS code, you can use our [online CSS compressor and optimizer](#) based on csstidy. If you want to create a linear or radial gradient as background or border, check our [CSS Gradient Generator](#).

Hey! You found this booklet interesting? Support Converting Colors with the new Membership Option!

The pro membership hides all ads, plus gives you double the colors in the color bucket, and more awesome pro features!

[Learn more, Memberships starting at \\$2.50/m!](#)

**Follow me
on Twitter!**

@ConvertingColor