

Converting Colors

Hex(D4BFC0)

Have a look what the booklet for
Hex(D4BFC0) contains.

Hex(D4BFC0)	3
<i>Conversions</i>	4
<i>Details</i>	6
<i>Harmonies</i>	11
<i>Previews</i>	23
<i>Color Blindness Simulation</i>	26
<i>CSS Examples</i>	29

Color

Hex(D4BFC0)

Conversions

Conversions Part 1

Format	Color
Hex	D4BFC0
RGB	212, 191, 192
RGB Percent	83%, 75%, 75%
CMY	0.1686, 0.2510, 0.2471
CMYK	0.00, 0.10, 0.09, 0.17
HSL	357°, 20%, 79%
HSV	357°, 10%, 83%
XYZ	55.2966, 55.0644, 57.5832
YIQ	197.3930, 12.1950, 4.7630

Conversions

Conversions Part 2

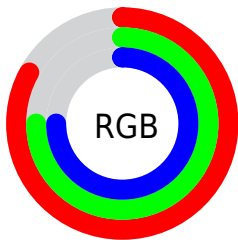
Format	Color
R _Y B	212, 191, 192
Decimal	13942720
CIE Lab	79.08, 7.58, 2.19
CIE LCh	79, 7.894, 16.118
Yxy	55.0644, 0.3293, 0.3279
Android (android.graphics.Color)	4292132800 (0xFFD4BFC0)
YUV	197.3930, -2.6587, 12.8103
Hunter-Lab	74.2054, 3.1557, 5.9349

Details

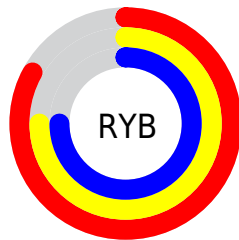
The Hex color **D4BFC0** is a light color, and the websafe version is hex **CCCCCC**. A complement of this color would be **BFD4D3**, and the grayscale version is **C5C5C5**.

A 20% lighter version of the original color is **FFF7F8**, and **9D8A8B** is the 20% darker color. If you saturate the color by 10%, you get **D4AAAC**, and if you desaturate by 10%, it is **D4D4D4**.

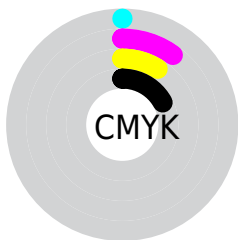
Distribution



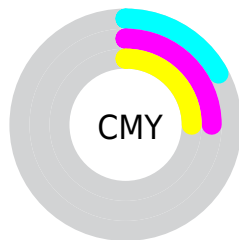
- Red (83%)
- Green (75%)
- Blue (75%)



- Red (83%)
- Yellow (75%)
- Blue (75%)



- Cyan (0%)
- Magenta (10%)
- Yellow (9%)
- Black (17%)



- Cyan (17%)
- Magenta (25%)
- Yellow (25%)

Brightness & Saturation Gradients

These gradients show how the Hex color D4BFC0 changes by changing the brightness by 10 percent. The first figure shows a shift by +10% for each color and the second figure -10%.

Similar to the brightness gradients but the following saturation gradients show a change of the Hex color D4BFC0 by changing the saturation by 10% instead.

 D4BFC0

FFFFFF

 FFF7F8

 D4BFC0

 B8A4A5

 9D8A8B

 837071

 6A5859

 514041

 3A2A2B

 241617

 090000

 000000

 D4BFC0

 D4BFC0

 D4AAAC

 D4D4D4

 D49598

 D4E9E8

 D47F83

 D4FFFD

 D46A6F

 D4FFFF

 D4555B

 D44047

 D42B33

 D4151E

 D4000A

Harmonies

Analogous

The Analogous color harmony consists of three colors that are next to each other on the color wheel.



D1BFC8



D4BFC0



D3C0B9

Triad

The Triadic color harmony groups three colors that are evenly spaced from another and form a triangle on the color wheel.



D4BFC0



BDC7B9



B9C5D2

Complementary

The Complementary color scheme is a pair of colors which are on the opposite of each other on the color wheel.



D4BFC0



BFD4D3

Split Complementary

Split-complementary colors differ from the complementary color scheme. The scheme consists of three colors, the original color and two neighbors of the complement color.



B3C7CE



D4BFC0



B6C8C0

Square

The Square scheme is like the rectangle color scheme, but the four colors are evenly spaced on the color wheel.



D4BFC0



C6C5B6



B2C8C8



C1C3D2

Rectangle

The Rectangle color scheme consists of four colors that form a rectangle on the color wheel.



D4BFC0



D0C1B7



B2C8C8



B6C6D1

Sweetspot

The Sweet Spot groups the original color and five complimentary colors.



D4BFC0



FFF7F8



D3BFD4



807A7B



000000



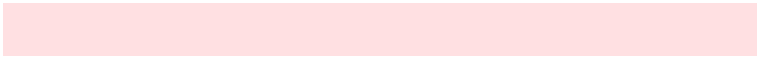
808080

Same Dimension

The Same Dimension uses a secret algorithm to generate beautiful new colors.



D4BFC0



FFE0E2



D4C8BF



6B6061



AB0008



2B0002

Inverse Universe

The Inverse Universe completely reimagines the original color for something new.



D4BFC0



FFE0E2



BFCBD4



6B6061



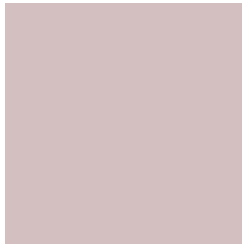
AB0008



2B0002

Previews

White Background



This preview shows how the Hex color D4BFC0 looks on a white background.

Color Contrast Check

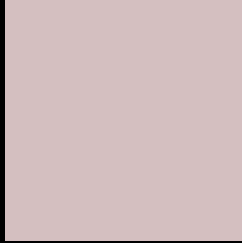
Large Text (above 18pt) WCAG AA × Fail

Any Text WCAG AA × Fail

Large Text (above 18pt) WCAG AAA × Fail

Any Text WCAG AAA × Fail

Black Background



This preview shows how the Hex color D4BFC0 looks on a black background.

Color Contrast Check

Large Text (above 18pt) WCAG AA ✓ Pass

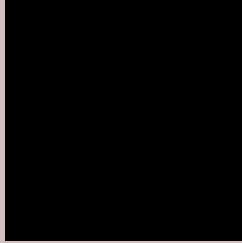
Any Text WCAG AA ✓ Pass

Large Text (above 18pt) WCAG AAA ✓ Pass

Any Text WCAG AAA ✓ Pass

If you want to check with other color combinations, try the [Color Contrast Checker](#).

Hex D4BFC0 Background



This preview shows how black text looks on a background with the Hex color D4BFC0.



This preview shows how white text looks on a background with the Hex color D4BFC0.

Color Blindness Simulation

Color vision deficiency is a very complex topic, and I could not describe the different causes any better than Wikipedia does, so if you want to learn more, you should check out their [article about color blindness](#).

Dichromacy



Original Color
D4BFC0

Protanopia
C8C3C2

Deuteranopia
D8BDC0



Tritanopia
D6BDCC

Trichromacy



Original Color
D4BFC0

Protanomaly
CCC2C1

Deuteranomaly
D7BEC0

Tritanomaly
D5BEC8

Monochromacy



Original Color
D4BFC0

Achromatopsia
C5C5C5

Achromatomaly
CAC3C3

CSS Examples

Text

The CSS property to change the color of the text to Hex D4BFC0 is called "color". The color property can be set on classes, ids or directly on the HTML element.

This example shows how text in the color #D4BFC0 looks like.

```
.text, #text, p{  
    color:#D4BFC0  
}
```

If you want to add a text shadow in that color use the text-shadow property, you can generate a text shadow directly with our [CSS Text Shadow Generator](#).

Here you see how black text with a 4 pixel #D4BFC0 colored shadow looks like.

```
.shadow{ text-shadow: 4px 4px 2px #D4BFC0  
}
```

Border

The CSS property to change the border of an element to Hex D4BFC0 is called "border". The border property can be set on classes, ids or directly on the HTML element.

This example shows the color as border, it can be applied via the CSS property "border" or "border-color".

```
.border, #border, table{ border:4px solid  
#D4BFC0 }
```

If only the border color should be changed use the property `border-color`.

```
.border{ border-color:#D4BFC0 }
```

If you want to add a box shadow in that color use:

Here you see how a box with a 4 pixel #D4BFC0 colored shadow looks like.

```
.boxshadow{ -moz-box-shadow:4px 4px 4px  
4px #D4BFC0; -webkit-box-shadow:4px 4px  
4px 4px #D4BFC0; box-shadow:4px 4px 4px  
4px #D4BFC0 }
```

Background

The CSS property to change the background color of an element to Hex D4BFC0 is called "background". The background property can be set on classes, ids or directly on the HTML element.

```
.background, #background, body{  
background:#D4BFC0 }
```

If only the background color should be changed can be used:

```
.background{ background-color:#D4BFC0 }
```

This example shows the color as background, it is applied via the CSS property "background".

To optimize and compress your CSS code, you can use our [online CSS compressor and optimizer](#) based on csstidy. If you want to create a linear or radial gradient as background or border, check our [CSS Gradient Generator](#).

Hey! You found this booklet interesting? Support Converting Colors with the new Membership Option!

The pro membership hides all ads, plus gives you double the colors in the color bucket, and more awesome pro features!

[Learn more, Memberships starting at \\$2.50/m!](#)

**Follow me
on Twitter!**

@ConvertingColor