

Converting Colors

Hex(D4BFC5)

Have a look what the booklet for
Hex(D4BFC5) contains.

Hex(D4BFC5)	3
<i>Conversions</i>	4
<i>Details</i>	6
<i>Harmonies</i>	11
<i>Previews</i>	23
<i>Color Blindness Simulation</i>	26
<i>CSS Examples</i>	29

Color

Hex(D4BFC5)

Conversions

Conversions Part 1

Format	Color
Hex	D4BFC5
RGB	212, 191, 197
RGB Percent	83%, 75%, 77%
CMY	0.1686, 0.2510, 0.2275
CMYK	0.00, 0.10, 0.07, 0.17
HSL	343°, 20%, 79%
HSV	343°, 10%, 83%
XYZ	55.8602, 55.2899, 60.5512
YIQ	197.9630, 10.5900, 6.3180

Conversions

Conversions Part 2

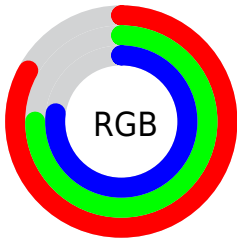
Format	Color
RYB	212, 191, 197
Decimal	13942725
CIELab	79.21, 8.44, -0.32
CIElCh	79, 8.444, 357.846
Yxy	55.2899, 0.3253, 0.3220
Android (android.graphics.Color)	4292132805 (0xFFD4BFC5)
YUV	197.9630, -0.4748, 12.3104
Hunter-Lab	74.3572, 3.9717, 3.7684

Details

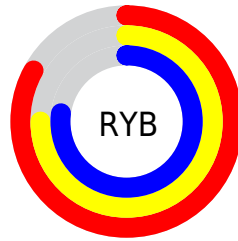
The Hex color **D4BFC5** is a light color, and the websafe version is hex **CCCCCC**. A complement of this color would be **BFD4CE**, and the grayscale version is **C6C6C6**.

A 20% lighter version of the original color is **FFF7FE**, and **9D8A8F** is the 20% darker color. If you saturate the color by 10%, you get **D4AAB6**, and if you desaturate by 10%, it is **D4D4D4**.

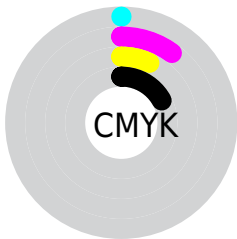
Distribution



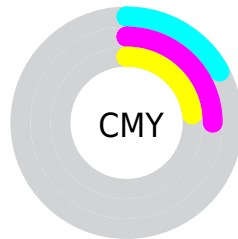
- Red (83%)
- Green (75%)
- Blue (77%)



- Red (83%)
- Yellow (75%)
- Blue (77%)



- Cyan (0%)
- Magenta (10%)
- Yellow (7%)
- Black (17%)



- Cyan (17%)
- Magenta (25%)
- Yellow (23%)

Brightness & Saturation Gradients

These gradients show how the Hex color D4BFC5 changes by changing the brightness by 10 percent. The first figure shows a shift by +10% for each color and the second figure -10%.

Similar to the brightness gradients but the following saturation gradients show a change of the Hex color D4BFC5 by changing the saturation by 10% instead.

 D4BFC5

FFFFFF

 FFF7FE

 D4BFC5

 B8A4AA

 9D8A8F

 837076

 6A585D

 524046

 3A2A2F

 25161B

 0D0000

 000000

 D4BFC5

 D4BFC5

 D4AAB6

 D4D4D4

 D495A7

 D4E9E3

 D47F98

 D4FFF2

 D46A88

 D4FFFF

 D45579

 D4406A

 D42B5B

 D4154C

 D4003D

Harmonies

Analogous

The Analogous color harmony consists of three colors that are next to each other on the color wheel.



CEC0CD



D4BFC5



D5BFBD

Triad

The Triadic color harmony groups three colors that are evenly spaced from another and form a triangle on the color wheel.



D4BFC5



C3C6B6



B4C7D1

Complementary

The Complementary color scheme is a pair of colors which are on the opposite of each other on the color wheel.



D4BFC5



BFD4CE

Split Complementary

Split-complementary colors differ from the complementary color scheme. The scheme consists of three colors, the original color and two neighbors of the complement color.



B1C9CB



D4BFC5



BAC8BC

Square

The Square scheme is like the rectangle color scheme, but the four colors are evenly spaced on the color wheel.



D4BFC5



CCC3B5



B3C9C3



BCC5D4

Rectangle

The Rectangle color scheme consists of four colors that form a rectangle on the color wheel.



D4BFC5



D4C0B9



B3C9C3



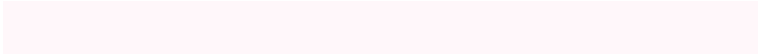
B2C8CF

Sweetspot

The Sweet Spot groups the original color and five complimentary colors.



D4BFC5



FFF7FA



CEBFD4



807A7C



000000



808080

Same Dimension

The Same Dimension uses a secret algorithm to generate beautiful new colors.



D4BFC5



FFE0E9



D4C3BF



6B6063



AB0031



2B000C

Inverse Universe

The Inverse Universe completely reimagines the original color for something new.



D4BFC5



FFE0E9



BFD0D4



6B6063



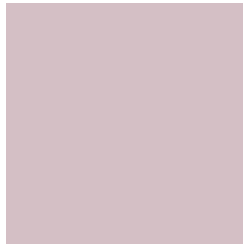
AB0031



2B000C

Previews

White Background



This preview shows how the Hex color D4BFC5 looks on a white background.

Color Contrast Check

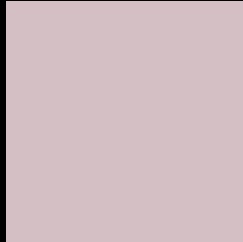
Large Text (above 18pt) WCAG AA × Fail

Any Text WCAG AA × Fail

Large Text (above 18pt) WCAG AAA × Fail

Any Text WCAG AAA × Fail

Black Background



This preview shows how the Hex color D4BFC5 looks on a black background.

Color Contrast Check

Large Text (above 18pt) WCAG AA ✓ Pass

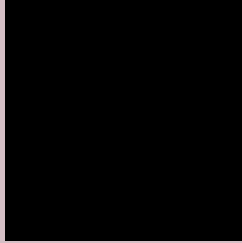
Any Text WCAG AA ✓ Pass

Large Text (above 18pt) WCAG AAA ✓ Pass

Any Text WCAG AAA ✓ Pass

If you want to check with other color combinations, try the [Color Contrast Checker](#).

Hex D4BFC5 Background



This preview shows how black text looks on a background with the Hex color D4BFC5.

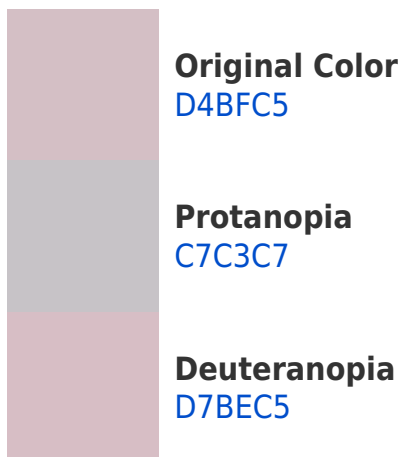


This preview shows how white text looks on a background with the Hex color D4BFC5.

Color Blindness Simulation

Color vision deficiency is a very complex topic, and I could not describe the different causes any better than Wikipedia does, so if you want to learn more, you should check out their [article about color blindness](#).

Dichromacy





Tritanopia
D5BECD

Trichromacy



Original Color
D4BFC5

Protanomaly
CCC2C6

Deuteranomaly
D6BEC5

Tritanomaly
D5BECA

Monochromacy



Original Color
D4BFC5

Achromatopsia
C6C6C6

Achromatomaly
CBC3C6

CSS Examples

Text

The CSS property to change the color of the text to Hex D4BFC5 is called "color". The color property can be set on classes, ids or directly on the HTML element.

This example shows how text in the color #D4BFC5 looks like.

```
.text, #text, p{  
    color:#D4BFC5  
}
```

If you want to add a text shadow in that color use the text-shadow property, you can generate a text shadow directly with our [CSS Text Shadow Generator](#).

Here you see how black text with a 4 pixel #D4BFC5 colored shadow looks like.

```
.shadow{ text-shadow: 4px 4px 2px #D4BFC5  
}
```

Border

The CSS property to change the border of an element to Hex D4BFC5 is called "border". The border property can be set on classes, ids or directly on the HTML element.

This example shows the color as border, it can be applied via the CSS property "border" or "border-color".

```
.border, #border, table{ border:4px solid  
#D4BFC5 }
```

If only the border color should be changed use the property `border-color`.

```
.border{ border-color:#D4BFC5 }
```

If you want to add a box shadow in that color use:

Here you see how a box with a 4 pixel #D4BFC5 colored shadow looks like.

```
.boxshadow{ -moz-box-shadow:4px 4px 4px  
4px #D4BFC5; -webkit-box-shadow:4px 4px  
4px 4px #D4BFC5; box-shadow:4px 4px 4px  
4px #D4BFC5 }
```

Background

The CSS property to change the background color of an element to Hex D4BFC5 is called "background". The background property can be set on classes, ids or directly on the HTML element.

```
.background, #background, body{  
background:#D4BFC5 }
```

If only the background color should be changed can be used:

```
.background{ background-color:#D4BFC5 }
```

This example shows the color as background, it is applied via the CSS property "background".

To optimize and compress your CSS code, you can use our [online CSS compressor and optimizer](#) based on csstidy. If you want to create a linear or radial gradient as background or border, check our [CSS Gradient Generator](#).

Hey! You found this booklet interesting? Support Converting Colors with the new Membership Option!

The pro membership hides all ads, plus gives you double the colors in the color bucket, and more awesome pro features!

[Learn more, Memberships starting at \\$2.50/m!](#)

**Follow me
on Twitter!**

@ConvertingColor