

Converting Colors

Hex(D53D71)

Have a look what the booklet for
Hex(D53D71) contains.

Hex(D53D71)	3
<i>Conversions</i>	4
<i>Details</i>	6
<i>Harmonies</i>	11
<i>Previews</i>	23
<i>Color Blindness Simulation</i>	26
<i>CSS Examples</i>	29

Color

Hex(D53D71)

Conversions

Conversions Part 1

Format	Color
Hex	D53D71
RGB	213, 61, 113
RGB Percent	84%, 24%, 44%
CMY	0.1647, 0.7608, 0.5569
CMYK	0.00, 0.71, 0.47, 0.16
HSL	339°, 64%, 54%
HSV	339°, 71%, 84%
XYZ	32.0900, 18.6759, 17.5363
YIQ	112.3760, 73.9000, 48.3960

Conversions

Conversions Part 2

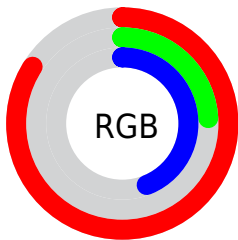
Format	Color
R_{YB}	213, 61, 113
Decimal	13974897
CIE _{Lab}	50.31, 62.36, 5.51
CIE _{LCh}	50, 62.603, 5.045
Yxy	18.6759, 0.4698, 0.2734
Android (android.graphics.Color)	4292164977 (0xFFD53D71)
YUV	112.3760, 0.3076, 88.2472
Hunter-Lab	43.2156, 56.9188, 6.1919

Details

The Hex color **D53D71** is a dark color, and the websafe version is hex **CC3366**. The color can be described as dark muted rose. A complement of this color would be **3DD5A1**, and the grayscale version is **707070**.

A 20% lighter version of the original color is **FF77A5**, and **990042** is the 20% darker color. If you saturate the color by 10%, you get **D52863**, and if you desaturate by 10%, it is **D5527F**.

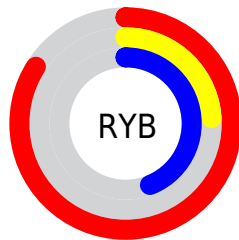
Distribution



Red (84%)

Green (24%)

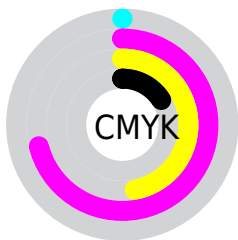
Blue (44%)



Red (84%)

Yellow (24%)

Blue (44%)

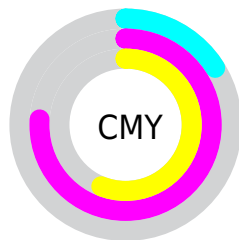


Cyan (0%)

Magenta (71%)

Yellow (47%)

Black (16%)



Cyan (16%)

Magenta (76%)

Yellow (56%)

Brightness & Saturation Gradients

These gradients show how the Hex color D53D71 changes by changing the brightness by 10 percent. The first figure shows a shift by +10% for each color and the second figure -10%.

Similar to the brightness gradients but the following saturation gradients show a change of the Hex color D53D71 by changing the saturation by 10% instead.

 D53D71

 D53D71

FFFFFF

 B71959

 FF77A5

 990042

 FF94C0

 7B002C

 FFB0DB

 5E0018

 FFCDF8

 440003

 FFE8FF

 220001

 000000

 D53D71

 D53D71

 D52863

 D5527F

 D51255

 D5688D

 D50049

 D57D9B

 D592A9

 D5A8B7

 D5BDC5

 D5D2D3

 D5E7E1

 D5FDEF

Harmonies

Analogous

The Analogous color harmony consists of three colors that are next to each other on the color wheel.



BE4BA6



D53D71



CF4B3D

Triad

The Triadic color harmony groups three colors that are evenly spaced from another and form a triangle on the color wheel.



D53D71



50860F



0089D8

Complementary

The Complementary color scheme is a pair of colors which are on the opposite of each other on the color wheel.



D53D71



3DD5A1

Split Complementary

Split-complementary colors differ from the complementary color scheme. The scheme consists of three colors, the original color and two neighbors of the complement color.



008FB4



D53D71



008D48

Square

The Square scheme is like the rectangle color scheme, but the four colors are evenly spaced on the color wheel.



D53D71



887800



009080



007BE3

Rectangle

The Rectangle color scheme consists of four colors that form a rectangle on the color wheel.



D53D71



BE5C1D



009080



008CCF

Sweetspot

The Sweet Spot groups the original color and five complimentary colors.



D53D71



FFC9DC



A03DD5



80606B



000000



808080

Same Dimension

The Same Dimension uses a secret algorithm to generate beautiful new colors.



D53D71



FF246F



D5543D



6B6064



AB003A



2B000F

Inverse Universe

The Inverse Universe completely reimagines the original color for something new.



D53D71



FF246F



3DBED5



6B6064



AB003A



2B000F

Previews

White Background



This preview shows how the Hex color D53D71 looks on a white background.

Color Contrast Check

Large Text (above 18pt) WCAG AA ✓ Pass

Any Text WCAG AA × Fail

Large Text (above 18pt) WCAG AAA × Fail

Any Text WCAG AAA × Fail

Black Background



Color Contrast Check

Large Text (above 18pt) WCAG AA ✓ Pass

Any Text WCAG AA ✓ Pass

Large Text (above 18pt) WCAG AAA ✓ Pass

Any Text WCAG AAA × Fail

If you want to check with other color combinations, try the [Color Contrast Checker](#).

Hex D53D71 Background



This preview shows how black text looks on a background with the Hex color D53D71.

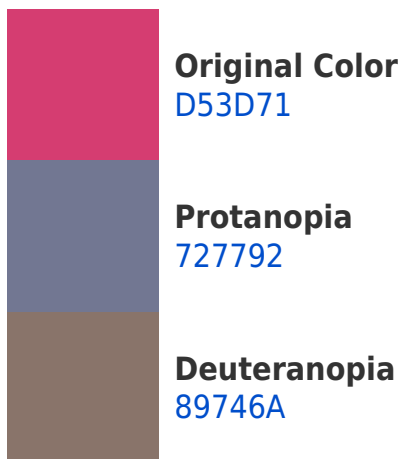



This preview shows how white text looks on a background with the Hex color D53D71.

Color Blindness Simulation

Color vision deficiency is a very complex topic, and I could not describe the different causes any better than Wikipedia does, so if you want to learn more, you should check out their [article about color blindness](#).

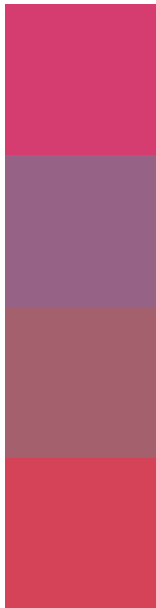
Dichromacy





Tritanopia
D3464A

Trichromacy



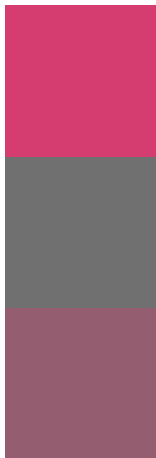
Original Color
D53D71

Protanomaly
966286

Deuteranomaly
A5606D

Tritanomaly
D44358

Monochromacy



Original Color
D53D71

Achromatopsia
707070

Achromatomaly
955D70

CSS Examples

Text

The CSS property to change the color of the text to Hex D53D71 is called "color". The color property can be set on classes, ids or directly on the HTML element.

This example shows how text in the color #D53D71 looks like.

```
.text, #text, p{  
    color:#D53D71  
}
```

If you want to add a text shadow in that color use the text-shadow property, you can generate a text shadow directly with our [CSS Text Shadow Generator](#).

Here you see how black text with a 4 pixel #D53D71 colored shadow looks like.

```
.shadow{ text-shadow: 4px 4px 2px #D53D71
}
```

Border

The CSS property to change the border of an element to Hex D53D71 is called "border". The border property can be set on classes, ids or directly on the HTML element.

This example shows the color as border, it can be applied via the CSS property "border" or "border-color".

```
.border, #border, table{ border:4px solid
#D53D71 }
```

If only the border color should be changed use the property `border-color`.

```
.border{ border-color:#D53D71 }
```

If you want to add a box shadow in that color use:

Here you see how a box with a 4 pixel #D53D71 colored shadow looks like.

```
.boxshadow{ -moz-box-shadow:4px 4px 4px  
4px #D53D71; -webkit-box-shadow:4px 4px  
4px 4px #D53D71; box-shadow:4px 4px 4px  
4px #D53D71 }
```

Background

The CSS property to change the background color of an element to Hex D53D71 is called "background". The background property can be set on classes, ids or directly on the HTML element.

```
.background, #background, body{  
background:#D53D71 }
```

If only the background color should be changed can be used:

```
.background{ background-color:#D53D71 }
```

This example shows the color as background, it is applied via the CSS property "background".

To optimize and compress your CSS code, you can use our [online CSS compressor and optimizer](#) based on csstidy. If you want to create a linear or radial gradient as background or border, check our [CSS Gradient Generator](#).

Hey! You found this booklet interesting? Support Converting Colors with the new Membership Option!

The pro membership hides all ads, plus gives you double the colors in the color bucket, and more awesome pro features!

[Learn more, Memberships starting at \\$2.50/m!](#)

**Follow me
on Twitter!**

@ConvertingColor