

Converting Colors

Hex(D569D6)

Have a look what the booklet for
Hex(D569D6) contains.

Hex(D569D6)	3
<i>Conversions</i>	4
<i>Details</i>	6
<i>Harmonies</i>	11
<i>Previews</i>	23
<i>Color Blindness Simulation</i>	26
<i>CSS Examples</i>	29

Color

Hex(D569D6)

Conversions

Conversions Part 1

Format	Color
Hex	D569D6
RGB	213, 105, 214
RGB Percent	84%, 41%, 84%
CMY	0.1647, 0.5882, 0.1608
CMYK	0.00, 0.51, 0.00, 0.16
HSL	299°, 57%, 63%
HSV	299°, 51%, 84%
XYZ	44.6297, 29.1043, 66.8838
YIQ	149.7180, 29.3790, 56.7950

Conversions

Conversions Part 2

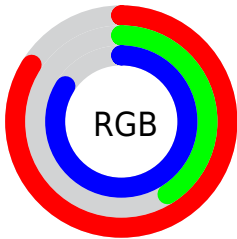
Format	Color
R _Y B	213, 105, 214
Decimal	13986262
CIE Lab	60.87, 57.27, -37.47
CIE LCh	61, 68.444, 326.805
Yxy	29.1043, 0.3174, 0.2070
Android (android.graphics.Color)	4292176342 (0xFFD569D6)
YUV	149.7180, 31.6910, 55.4983
Hunter-Lab	53.9484, 53.2574, -35.7422

Details

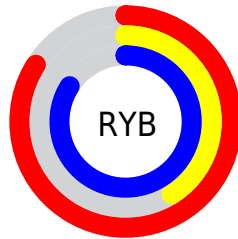
The Hex color **D569D6** is a light color, and the websafe version is hex **CC66CC**. A complement of this color would be **6AD669**, and the grayscale version is **959595**.

A 20% lighter version of the original color is **FFA0FF**, and **9C329F** is the 20% darker color. If you saturate the color by 10%, you get **D554D6**, and if you desaturate by 10%, it is **D57ED6**.

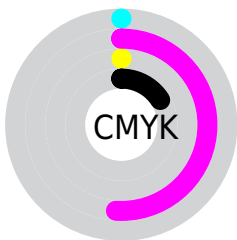
Distribution



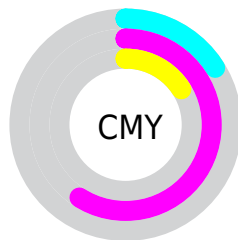
- Red (84%)
- Green (41%)
- Blue (84%)



- Red (84%)
- Yellow (41%)
- Blue (84%)



- Cyan (0%)
- Magenta (51%)
- Yellow (0%)
- Black (16%)



- Cyan (16%)
- Magenta (59%)
- Yellow (16%)

Brightness & Saturation Gradients

These gradients show how the Hex color D569D6 changes by changing the brightness by 10 percent. The first figure shows a shift by +10% for each color and the second figure -10%.

Similar to the brightness gradients but the following saturation gradients show a change of the Hex color D569D6 by changing the saturation by 10% instead.

 D569D6

 D569D6

FFFFFF

 B84EBA

 FFA0FF

 9C329F

 FFBCFF

 800F84

 FFD9FF

 65006B

 FFF6FF

 4A0052

 33003B

 120024

 00000B

 000000

 D569D6

 D569D6

 D554D6

 D57ED6

 D53ED6

 D594D6

 D429D6

 D6A9D6

 D413D6

 D6BFD6

 D400D6

 D6D4D6

 D6E9D6

 D6FFD6

 D7FFD6

Harmonies

Analogous

The Analogous color harmony consists of three colors that are next to each other on the color wheel.



8486FF



D569D6



FA559C

Triad

The Triadic color harmony groups three colors that are evenly spaced from another and form a triangle on the color wheel.



D569D6



B58E00



00AEC8

Complementary

The Complementary color scheme is a pair of colors which are on the opposite of each other on the color wheel.



D569D6



6AD669

Split Complementary

Split-complementary colors differ from the complementary color scheme. The scheme consists of three colors, the original color and two neighbors of the complement color.



00AE8A



D569D6



7B9F0F

Square

The Square scheme is like the rectangle color scheme, but the four colors are evenly spaced on the color wheel.



D569D6



E2752A



05A94C



00A9F8

Rectangle

The Rectangle color scheme consists of four colors that form a rectangle on the color wheel.



D569D6



FF5674



05A94C



00AFB4

Sweetspot

The Sweet Spot groups the original color and five complimentary colors.



D569D6



FFD9FF



696BD6



7F6980



000000



808080

Same Dimension

The Same Dimension uses a secret algorithm to generate beautiful new colors.



D569D6



FE63FF



D669A1



6B606B



A900AB



2B002B

Inverse Universe

The Inverse Universe completely reimagines the original color for something new.



D6696A



FF6365



69D69E



6B6060



AB0002



2B0000

Previews

White Background



This preview shows how the Hex color D569D6 looks on a white background.

Color Contrast Check

Large Text (above 18pt) WCAG AA ✓ Pass

Any Text WCAG AA ✗ Fail

Large Text (above 18pt) WCAG AAA ✗ Fail

Any Text WCAG AAA ✗ Fail

Black Background



Color Contrast Check

Large Text (above 18pt) WCAG AA ✓ Pass

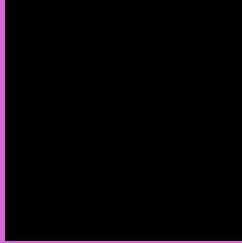
Any Text WCAG AA ✓ Pass

Large Text (above 18pt) WCAG AAA ✓ Pass

Any Text WCAG AAA × Fail

If you want to check with other color combinations, try the [Color Contrast Checker](#).

Hex D569D6 Background



This preview shows how black text looks on a background with the Hex color D569D6.

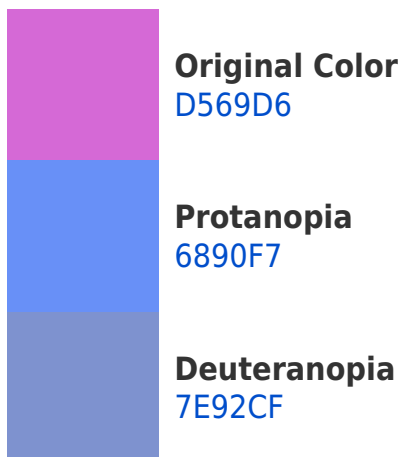


This preview shows how white text looks on a background with the Hex color D569D6.

Color Blindness Simulation

Color vision deficiency is a very complex topic, and I could not describe the different causes any better than Wikipedia does, so if you want to learn more, you should check out their [article about color blindness](#).

Dichromacy





Tritanopia
CB7D86

Trichromacy



Original Color
D569D6



Protanomaly
9082EB



Deuteranomaly
9E83D2



Tritanomaly
CF76A3

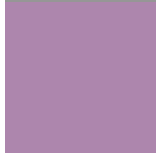
Monochromacy



Original Color
D569D6



Achromatopsia
969696



Achromatomaly
AD86AD

CSS Examples

Text

The CSS property to change the color of the text to Hex D569D6 is called "color". The color property can be set on classes, ids or directly on the HTML element.

This example shows how text in the color #D569D6 looks like.

```
.text, #text, p{  
    color:#D569D6  
}
```

If you want to add a text shadow in that color use the text-shadow property, you can generate a text shadow directly with our [CSS Text Shadow Generator](#).

Here you see how black text with a 4 pixel #D569D6 colored shadow looks like.

```
.shadow{ text-shadow: 4px 4px 2px #D569D6
}
```

Border

The CSS property to change the border of an element to Hex D569D6 is called "border". The border property can be set on classes, ids or directly on the HTML element.

This example shows the color as border, it can be applied via the CSS property "border" or "border-color".

```
.border, #border, table{ border:4px solid
#D569D6 }
```

If only the border color should be changed use the property `border-color`.

```
.border{ border-color:#D569D6 }
```

If you want to add a box shadow in that color use:

Here you see how a box with a 4 pixel #D569D6 colored shadow looks like.

```
.boxshadow{ -moz-box-shadow:4px 4px 4px  
4px #D569D6; -webkit-box-shadow:4px 4px  
4px 4px #D569D6; box-shadow:4px 4px 4px  
4px #D569D6 }
```

Background

The CSS property to change the background color of an element to Hex D569D6 is called "background". The background property can be set on classes, ids or directly on the HTML element.

```
.background, #background, body{  
background:#D569D6 }
```

If only the background color should be changed can be used:

```
.background{ background-color:#D569D6 }
```

This example shows the color as background, it is applied via the CSS property "background".

To optimize and compress your CSS code, you can use our [online CSS compressor and optimizer](#) based on csstidy. If you want to create a linear or radial gradient as background or border, check our [CSS Gradient Generator](#).

Hey! You found this booklet interesting? Support Converting Colors with the new Membership Option!

The pro membership hides all ads, plus gives you double the colors in the color bucket, and more awesome pro features!

[Learn more, Memberships starting at \\$2.50/m!](#)

**Follow me
on Twitter!**

@ConvertingColor