

Converting Colors

Hex(D58D89)

Have a look what the booklet for
Hex(D58D89) contains.

Hex(D58D89)	3
<i>Conversions</i>	4
<i>Details</i>	6
<i>Harmonies</i>	11
<i>Previews</i>	23
<i>Color Blindness Simulation</i>	26
<i>CSS Examples</i>	29

Color

Hex(D58D89)

Conversions

Conversions Part 1

Format	Color
Hex	D58D89
RGB	213, 141, 137
RGB Percent	84%, 55%, 54%
CMY	0.1647, 0.4471, 0.4627
CMYK	0.00, 0.34, 0.36, 0.16
HSL	3°, 48%, 69%
HSV	3°, 36%, 84%
XYZ	41.4808, 35.0020, 28.2367
YIQ	162.0720, 44.1960, 14.0200

Conversions

Conversions Part 2

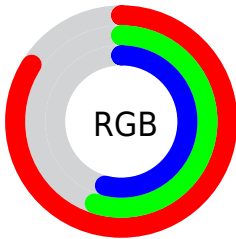
Format	Color
R_{YB}	213, 141, 137
Decimal	13995401
CIE Lab	65.75, 26.89, 13.41
CIE LCh	66, 30.048, 26.502
Yxy	35.0020, 0.3961, 0.3342
Android (android.graphics.Color)	4292185481 (0xFFD58D89)
YUV	162.0720, -12.3605, 44.6639
Hunter-Lab	59.1625, 21.6179, 13.1162

Details

The Hex color **D58D89** is a light color, and the websafe version is hex **CC9999**. A complement of this color would be **89D1D5**, and the grayscale version is **A2A2A2**.

A 20% lighter version of the original color is **FFC3BE**, and **9C5A57** is the 20% darker color. If you saturate the color by 10%, you get **D57974**, and if you desaturate by 10%, it is **D5A19E**.

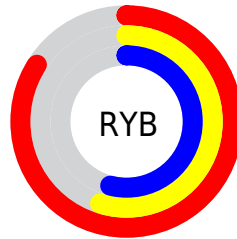
Distribution



Red (84%)

Green (55%)

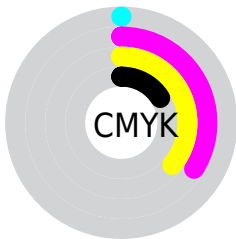
Blue (54%)



Red (84%)

Yellow (55%)

Blue (54%)

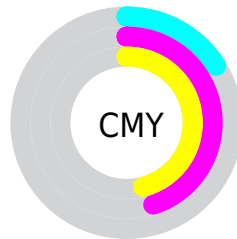


Cyan (0%)

Magenta (34%)

Yellow (36%)

Black (16%)



Cyan (16%)

Magenta (45%)

Yellow (46%)

Brightness & Saturation Gradients

These gradients show how the Hex color D58D89 changes by changing the brightness by 10 percent. The first figure shows a shift by +10% for each color and the second figure -10%.

Similar to the brightness gradients but the following saturation gradients show a change of the Hex color D58D89 by changing the saturation by 10% instead.

 D58D89

 D58D89

FFFFFF

 B87370

 FFC3BE

 9C5A57

 FFDFDA

 814240

 FFFCF7

 662A2A

 4C1316

 330000

 140000

 000000

 D58D89

 D58D89

 D57974

 D5A19E

 D5655E

 D5B5B4

 D55049

 D5CAC9

 D53C34

 D5DEDE

 D5281E

 D5F2F4

 D51409

 D5FFFF

 D50B00

Harmonies

Analogous

The Analogous color harmony consists of three colors that are next to each other on the color wheel.



D28CA4



D58D89



CB9474

Triad

The Triadic color harmony groups three colors that are evenly spaced from another and form a triangle on the color wheel.



D58D89



7AAB81



77A3D5

Complementary

The Complementary color scheme is a pair of colors which are on the opposite of each other on the color wheel.



D58D89



89D1D5

Split Complementary

Split-complementary colors differ from the complementary color scheme. The scheme consists of three colors, the original color and two neighbors of the complement color.



52AACC



D58D89



5BAE9B

Square

The Square scheme is like the rectangle color scheme, but the four colors are evenly spaced on the color wheel.



D58D89



9AA56F



46AEB7



9F9AD0

Rectangle

The Rectangle color scheme consists of four colors that form a rectangle on the color wheel.



D58D89



BD9A6C



46AEB7



69A6D4

Sweetspot

The Sweet Spot groups the original color and five complimentary colors.



D58D89



FFE4E3



D589D1



80706F



000000



808080

Same Dimension

The Same Dimension uses a secret algorithm to generate beautiful new colors.



D58D89



FF9791



D5B389



6B6160



AB0900



2B0200

Inverse Universe

The Inverse Universe completely reimagines the original color for something new.



89D1D5



91F9FF



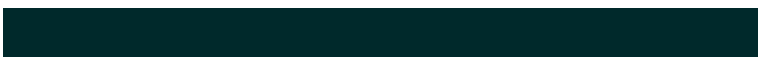
89ABD5



606B6B



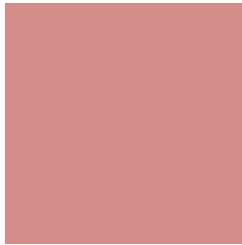
00A2AB



00292B

Previews

White Background



This preview shows how the Hex color D58D89 looks on a white background.

Color Contrast Check

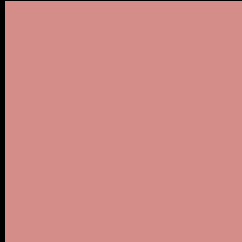
Large Text (above 18pt) WCAG AA × Fail

Any Text WCAG AA × Fail

Large Text (above 18pt) WCAG AAA × Fail

Any Text WCAG AAA × Fail

Black Background



This preview shows how the Hex color D58D89 looks on a black background.

Color Contrast Check

Large Text (above 18pt) WCAG AA ✓ Pass

Any Text WCAG AA ✓ Pass

Large Text (above 18pt) WCAG AAA ✓ Pass

Any Text WCAG AAA ✓ Pass

If you want to check with other color combinations, try the [Color Contrast Checker](#).

Hex D58D89 Background



This preview shows how black text looks on a background with the Hex color D58D89.

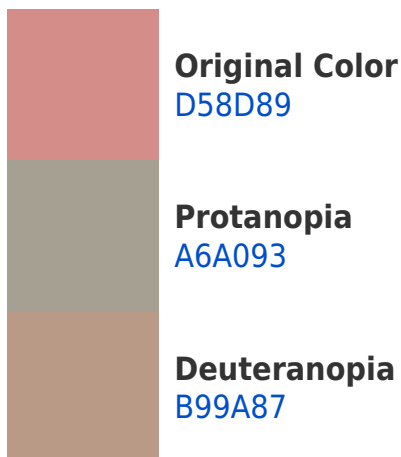


This preview shows how white text looks on a background with the Hex color D58D89.

Color Blindness Simulation

Color vision deficiency is a very complex topic, and I could not describe the different causes any better than Wikipedia does, so if you want to learn more, you should check out their [article about color blindness](#).

Dichromacy





Tritanopia
D68B96

Trichromacy



Original Color
D58D89

Protanomaly
B7998F

Deuteranomaly
C39588

Tritanomaly
D68C91

Monochromacy



Original Color
D58D89

Achromatopsia
A2A2A2

Achromatomaly
B59A99

CSS Examples

Text

The CSS property to change the color of the text to Hex D58D89 is called "color". The color property can be set on classes, ids or directly on the HTML element.

This example shows how text in the color #D58D89 looks like.

```
.text, #text, p{  
    color:#D58D89  
}
```

If you want to add a text shadow in that color use the text-shadow property, you can generate a text shadow directly with our [CSS Text Shadow Generator](#).

Here you see how black text with a 4 pixel #D58D89 colored shadow looks like.

```
.shadow{ text-shadow: 4px 4px 2px #D58D89
}
```

Border

The CSS property to change the border of an element to Hex D58D89 is called "border". The border property can be set on classes, ids or directly on the HTML element.

This example shows the color as border, it can be applied via the CSS property "border" or "border-color".

```
.border, #border, table{ border:4px solid
#D58D89 }
```

If only the border color should be changed use the property `border-color`.

```
.border{ border-color:#D58D89 }
```

If you want to add a box shadow in that color use:

Here you see how a box with a 4 pixel #D58D89 colored shadow looks like.

```
.boxshadow{ -moz-box-shadow:4px 4px 4px  
4px #D58D89; -webkit-box-shadow:4px 4px  
4px 4px #D58D89; box-shadow:4px 4px 4px  
4px #D58D89 }
```

Background

The CSS property to change the background color of an element to Hex D58D89 is called "background". The background property can be set on classes, ids or directly on the HTML element.

```
.background, #background, body{  
background:#D58D89 }
```

If only the background color should be changed can be used:

```
.background{ background-color:#D58D89 }
```

This example shows the color as background, it is applied via the CSS property "background".

To optimize and compress your CSS code, you can use our [online CSS compressor and optimizer](#) based on csstidy. If you want to create a linear or radial gradient as background or border, check our [CSS Gradient Generator](#).

Hey! You found this booklet interesting? Support Converting Colors with the new Membership Option!

The pro membership hides all ads, plus gives you double the colors in the color bucket, and more awesome pro features!

[Learn more, Memberships starting at \\$2.50/m!](#)

**Follow me
on Twitter!**

@ConvertingColor