

# Converting Colors

Hex(D59363)

Have a look what the booklet for  
Hex(D59363) contains.

<b>Hex(D59363)</b> .....	3
<b><i>Conversions</i></b> .....	4
<b><i>Details</i></b> .....	6
<b><i>Harmonies</i></b> .....	11
<b><i>Previews</i></b> .....	23
<b><i>Color Blindness Simulation</i></b> .....	26
<b><i>CSS Examples</i></b> .....	29

**Color**

**Hex(D59363)**

# Conversions

## Conversions Part 1

<b>Format</b>	<b>Color</b>
Hex	D59363
RGB	213, 147, 99
RGB Percent	84%, 58%, 39%
CMY	0.1647, 0.4235, 0.6118
CMYK	0.00, 0.31, 0.54, 0.16
HSL	25°, 58%, 61%
HSV	25°, 54%, 84%
XYZ	40.1264, 35.9144, 16.6217
YIQ	161.2620, 54.7440, -0.9360

# Conversions

## Conversions Part 2

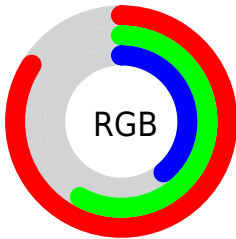
Format	Color
R <sub>Y</sub> B	213, 182, 99
Decimal	13996899
CIE Lab	66.45, 19.68, 35.27
CIE LCh	66, 40.393, 60.840
Yxy	35.9144, 0.4330, 0.3876
Android (android.graphics.Color)	4292186979 (0xFFD59363)
YUV	161.2620, -30.6952, 45.3742
Hunter-Lab	59.9286, 14.6431, 25.5055

# Details

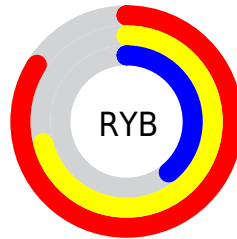
The Hex color **D59363** is a light color, and the websafe version is hex **CC9966**. A complement of this color would be **63A5D5**, and the grayscale version is **A2A2A2**.

A 20% lighter version of the original color is **FFC997**, and **9B6033** is the 20% darker color. If you saturate the color by 10%, you get **D5874E**, and if you desaturate by 10%, it is **D59F78**.

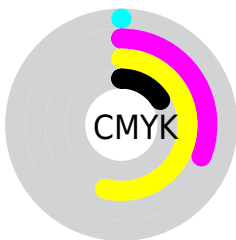
# Distribution



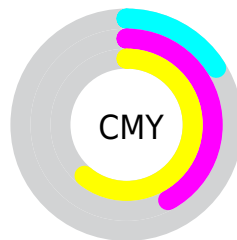
- Red (84%)
- Green (58%)
- Blue (39%)



- Red (84%)
- Yellow (71%)
- Blue (39%)



- Cyan (0%)
- Magenta (31%)
- Yellow (54%)
- Black (16%)



- Cyan (16%)
- Magenta (42%)
- Yellow (61%)

# Brightness & Saturation Gradients

These gradients show how the Hex color D59363 changes by changing the brightness by 10 percent. The first figure shows a shift by +10% for each color and the second figure -10%.

Similar to the brightness gradients but the following saturation gradients show a change of the Hex color D59363 by changing the saturation by 10% instead.



 D59363

 D59363

FFFFFF

 B8794B

 FFC997

 9B6033

 FFE5B2

 7F481C

 FFFFCD

 643104

 FFFFEA

 491B00

 2F0600

 0B0000

 000000

 D59363

 D59363

 D5874E

 D59F78

 D57A38

 D5AC8E

 D56E23

 D5B8A3

 D5620E

 D5C4B8

 D55A00

 D5D1CE

 D5DDE3

 D5E9F8

 D5F6FF

 D5FFFF

# Harmonies

## Analogous

The Analogous color harmony consists of three colors that are next to each other on the color wheel.



E6887E



D59363



B8A058

# Triad

The Triadic color harmony groups three colors that are evenly spaced from another and form a triangle on the color wheel.



D59363



28B5A1



A698E0

# Complementary

The Complementary color scheme is a pair of colors which are on the opposite of each other on the color wheel.



D59363



63A5D5

# Split Complementary

Split-complementary colors differ from the complementary color scheme. The scheme consists of three colors, the original color and two neighbors of the complement color.



6BA5EA



D59363



00B4C6

# Square

The Square scheme is like the rectangle color scheme, but the four colors are evenly spaced on the color wheel.



D59363



66B17D



04AFE0



D08BC6

# Rectangle

The Rectangle color scheme consists of four colors that form a rectangle on the color wheel.



D59363



9FA75C



04AFE0



959CE5

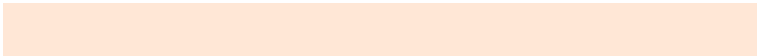


# Sweetspot

The Sweet Spot groups the original color and five complimentary colors.



D59363



FFE7D6



D563A5



807167



000000



808080



# Same Dimension

The Same Dimension uses a secret algorithm to generate beautiful new colors.



D59363



FFA15C



D5CC63



6B6560



AB4800



2B1200



# Inverse Universe

The Inverse Universe completely reimagines the original color for something new.



63A5D5



5CBAFF



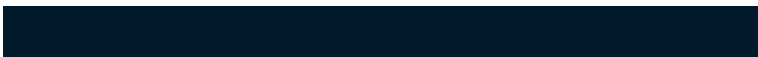
636CD5



60676B



0063AB

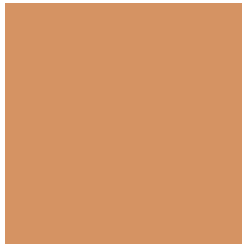


00192B



# Previews

## White Background



This preview shows how the Hex color D59363 looks on a white background.

## Color Contrast Check

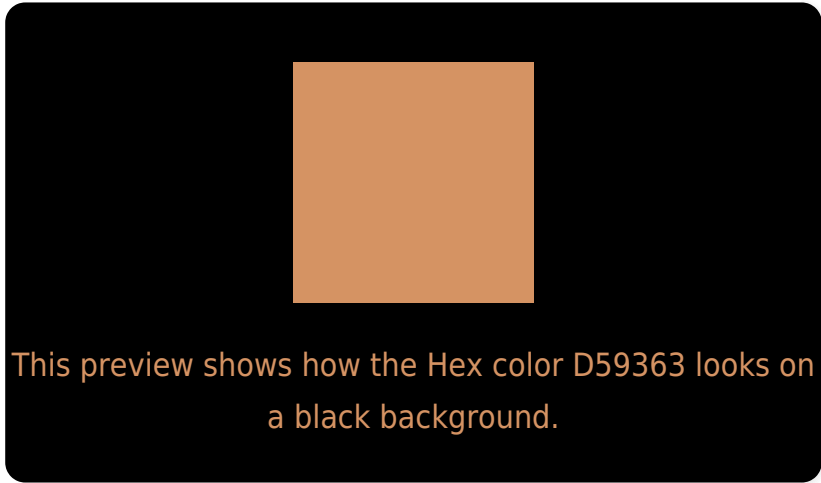
Large Text (above 18pt) WCAG AA × Fail

Any Text WCAG AA × Fail

Large Text (above 18pt) WCAG AAA × Fail

Any Text WCAG AAA × Fail

# Black Background



## Color Contrast Check

Large Text (above 18pt) WCAG AA ✓ Pass

Any Text WCAG AA ✓ Pass

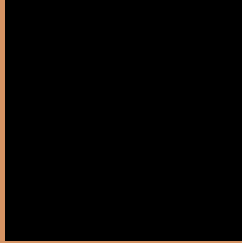
Large Text (above 18pt) WCAG AAA ✓ Pass

Any Text WCAG AAA ✓ Pass

If you want to check with other color combinations, try the [Color Contrast Checker](#).



## Hex D59363 Background



This preview shows how black text looks on a background with the Hex color D59363.



This preview shows how white text looks on a background with the Hex color D59363.

# Color Blindness Simulation

Color vision deficiency is a very complex topic, and I could not describe the different causes any better than Wikipedia does, so if you want to learn more, you should check out their [article about color blindness](#).

## Dichromacy





**Tritanopia**  
D98C97

# Trichromacy



**Original Color**  
D59363

**Protanomaly**  
BD9D67

**Deuteranomaly**  
CA9862

**Tritanomaly**  
D88F84

# Monochromacy



**Original Color**  
D59363

**Achromatopsia**  
A1A1A1

**Achromatomaly**  
B49C8A

# CSS Examples

## Text

The CSS property to change the color of the text to Hex D59363 is called "color". The color property can be set on classes, ids or directly on the HTML element.

This example shows how text in the color #D59363 looks like.

```
.text, #text, p{  
    color:#D59363  
}
```

If you want to add a text shadow in that color use the text-shadow property, you can generate a text shadow directly with our [CSS Text Shadow Generator](#).

Here you see how black text with a 4 pixel #D59363 colored shadow looks like.

```
.shadow{ text-shadow: 4px 4px 2px #D59363  
}
```

## Border

The CSS property to change the border of an element to Hex D59363 is called "border". The border property can be set on classes, ids or directly on the HTML element.

This example shows the color as border, it can be applied via the CSS property "border" or "border-color".

```
.border, #border, table{ border:4px solid  
#D59363 }
```

If only the border color should be changed use the property `border-color`.

```
.border{ border-color:#D59363 }
```

If you want to add a box shadow in that color use:

Here you see how a box with a 4 pixel #D59363 colored shadow looks like.

```
.boxshadow{ -moz-box-shadow:4px 4px 4px  
4px #D59363; -webkit-box-shadow:4px 4px  
4px 4px #D59363; box-shadow:4px 4px 4px  
4px #D59363 }
```

# Background

The CSS property to change the background color of an element to Hex D59363 is called "background". The background property can be set on classes, ids or directly on the HTML element.

```
.background, #background, body{  
background:#D59363 }
```

If only the background color should be changed can be used:

```
.background{ background-color:#D59363 }
```

This example shows the color as background, it is applied via the CSS property "background".

To optimize and compress your CSS code, you can use our [online CSS compressor and optimizer](#) based on csstidy. If you want to create a linear or radial gradient as background or border, check our [CSS Gradient Generator](#).



Hey! You found this booklet interesting? Support Converting Colors with the new Membership Option!

The pro membership hides all ads, plus gives you double the colors in the color bucket, and more awesome pro features!

**[Learn more, Memberships starting at \\$2.50/m!](#)**

**Follow me  
on Twitter!**

@ConvertingColor