

Converting Colors

Hex(D5A0A9)

Have a look what the booklet for
Hex(D5A0A9) contains.

Hex(D5A0A9)	3
<i>Conversions</i>	4
<i>Details</i>	6
<i>Harmonies</i>	11
<i>Previews</i>	23
<i>Color Blindness Simulation</i>	26
<i>CSS Examples</i>	29

Color

Hex(D5A0A9)

Conversions

Conversions Part 1

Format	Color
Hex	D5A0A9
RGB	213, 160, 169
RGB Percent	84%, 63%, 66%
CMY	0.1647, 0.3725, 0.3373
CMYK	0.00, 0.25, 0.21, 0.16
HSL	350°, 39%, 73%
HSV	350°, 25%, 84%
XYZ	47.1728, 42.1523, 43.1861
YIQ	176.8730, 28.6990, 14.0350

Conversions

Conversions Part 2

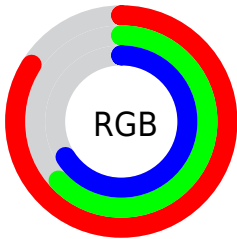
Format	Color
R _Y B	213, 160, 169
Decimal	14000297
CIE Lab	70.98, 20.98, 3.01
CIE LCh	71, 21.191, 8.172
Yxy	42.1523, 0.3560, 0.3181
Android (android.graphics.Color)	4292190377 (0xFFD5A0A9)
YUV	176.8730, -3.8814, 31.6834
Hunter-Lab	64.9248, 16.0754, 6.0094

Details

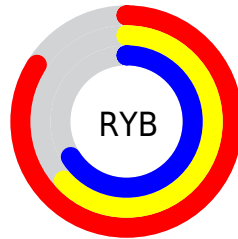
The Hex color **D5A0A9** is a light color, and the websafe version is hex **CC9999**. A complement of this color would be **A0D5CC**, and the grayscale version is **B1B1B1**.

A 20% lighter version of the original color is **FFD7E0**, and **9D6C75** is the 20% darker color. If you saturate the color by 10%, you get **D58B97**, and if you desaturate by 10%, it is **D5B5BB**.

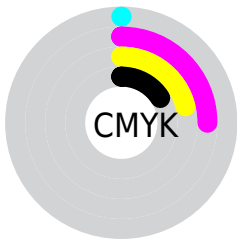
Distribution



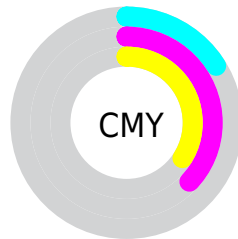
- Red (84%)
- Green (63%)
- Blue (66%)



- Red (84%)
- Yellow (63%)
- Blue (66%)



- Cyan (0%)
- Magenta (25%)
- Yellow (21%)
- Black (16%)



- Cyan (16%)
- Magenta (37%)
- Yellow (34%)

Brightness & Saturation Gradients

These gradients show how the Hex color D5A0A9 changes by changing the brightness by 10 percent. The first figure shows a shift by +10% for each color and the second figure -10%.

Similar to the brightness gradients but the following saturation gradients show a change of the Hex color D5A0A9 by changing the saturation by 10% instead.

 D5A0A9

 D5A0A9

FFFFFF

 B9868F

 FFD7E0

 9D6C75

 FFF4FD

 83545C

 693C45

 50252F

 37101A

 250000

 000000

 D5A0A9

 D5A0A9

 D58B97

 D5B5BB

 D57586

 D5CBCC

 D56074

 D5E0DE

 D54B62

 D5F5F0

 D53651

 D5FFFF

 D5203F

 D50B2D

 D50024

Harmonies

Analogous

The Analogous color harmony consists of three colors that are next to each other on the color wheel.



CBA2BC



D5A0A9



D4A297

Triad

The Triadic color harmony groups three colors that are evenly spaced from another and form a triangle on the color wheel.



D5A0A9



A1B48F



86B4D1

Complementary

The Complementary color scheme is a pair of colors which are on the opposite of each other on the color wheel.



D5A0A9



A0D5CC

Split Complementary

Split-complementary colors differ from the complementary color scheme. The scheme consists of three colors, the original color and two neighbors of the complement color.



79B8C5



D5A0A9



8CB89F

Square

The Square scheme is like the rectangle color scheme, but the four colors are evenly spaced on the color wheel.



D5A0A9



B7AE88



7CB9B2



9EAED4

Rectangle

The Rectangle color scheme consists of four colors that form a rectangle on the color wheel.



D5A0A9



CEA68E



7CB9B2



80B5CE

Sweetspot

The Sweet Spot groups the original color and five complimentary colors.



D5A0A9



FFEDF0



CBA0D5



807577



000000



808080

Same Dimension

The Same Dimension uses a secret algorithm to generate beautiful new colors.



D5A0A9



FFB3BF



D5B1A0



6B6062



AB001D



2B0007

Inverse Universe

The Inverse Universe completely reimagines the original color for something new.



D5A0A9



FFB3BF



A0C4D5



6B6062



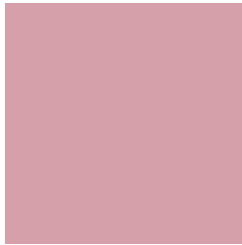
AB001D



2B0007

Previews

White Background



This preview shows how the Hex color D5A0A9 looks on a white background.

Color Contrast Check

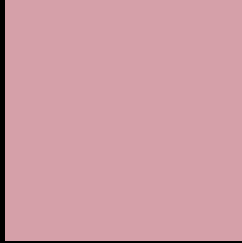
Large Text (above 18pt) WCAG AA × Fail

Any Text WCAG AA × Fail

Large Text (above 18pt) WCAG AAA × Fail

Any Text WCAG AAA × Fail

Black Background



This preview shows how the Hex color D5A0A9 looks on a black background.

Color Contrast Check

Large Text (above 18pt) WCAG AA ✓ Pass

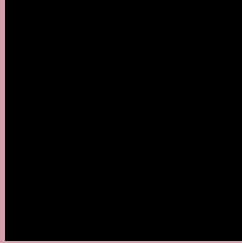
Any Text WCAG AA ✓ Pass

Large Text (above 18pt) WCAG AAA ✓ Pass

Any Text WCAG AAA ✓ Pass

If you want to check with other color combinations, try the [Color Contrast Checker](#).

Hex D5A0A9 Background



This preview shows how black text looks on a background with the Hex color D5A0A9.

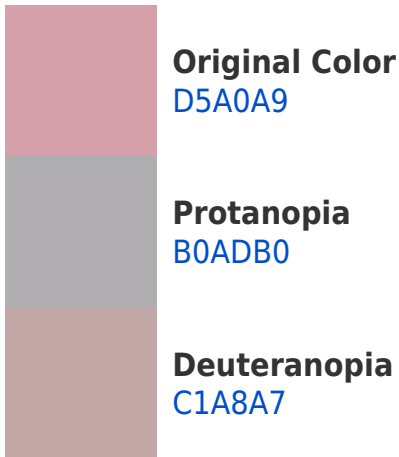


This preview shows how white text looks on a background with the Hex color D5A0A9.

Color Blindness Simulation

Color vision deficiency is a very complex topic, and I could not describe the different causes any better than Wikipedia does, so if you want to learn more, you should check out their [article about color blindness](#).

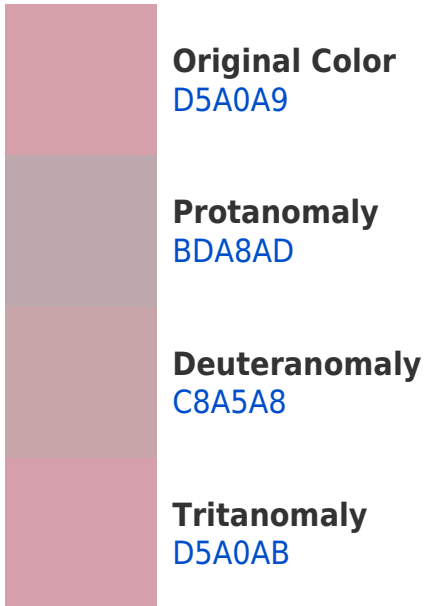
Dichromacy



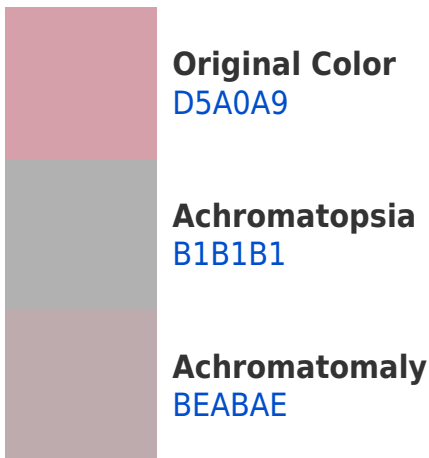


Tritanopia
D5A0AC

Trichromacy



Monochromacy



CSS Examples

Text

The CSS property to change the color of the text to Hex D5A0A9 is called "color". The color property can be set on classes, ids or directly on the HTML element.

This example shows how text in the color #D5A0A9 looks like.

```
.text, #text, p{  
    color:#D5A0A9  
}
```

If you want to add a text shadow in that color use the text-shadow property, you can generate a text shadow directly with our [CSS Text Shadow Generator](#).

Here you see how black text with a 4 pixel #D5A0A9 colored shadow looks like.

```
.shadow{ text-shadow: 4px 4px 2px #D5A0A9
}
```

Border

The CSS property to change the border of an element to Hex D5A0A9 is called "border". The border property can be set on classes, ids or directly on the HTML element.

This example shows the color as border, it can be applied via the CSS property "border" or "border-color".

```
.border, #border, table{ border:4px solid
#D5A0A9 }
```

If only the border color should be changed use the property `border-color`.

```
.border{ border-color:#D5A0A9 }
```

If you want to add a box shadow in that color use:

Here you see how a box with a 4 pixel #D5A0A9 colored shadow looks like.

```
.boxshadow{ -moz-box-shadow:4px 4px 4px  
4px #D5A0A9; -webkit-box-shadow:4px 4px  
4px 4px #D5A0A9; box-shadow:4px 4px 4px  
4px #D5A0A9 }
```

Background

The CSS property to change the background color of an element to Hex D5A0A9 is called "background". The background property can be set on classes, ids or directly on the HTML element.

```
.background, #background, body{  
background:#D5A0A9 }
```

If only the background color should be changed can be used:

```
.background{ background-color:#D5A0A9 }
```

This example shows the color as background, it is applied via the CSS property "background".

To optimize and compress your CSS code, you can use our [online CSS compressor and optimizer](#) based on csstidy. If you want to create a linear or radial gradient as background or border, check our [CSS Gradient Generator](#).

Hey! You found this booklet interesting? Support Converting Colors with the new Membership Option!

The pro membership hides all ads, plus gives you double the colors in the color bucket, and more awesome pro features!

[Learn more, Memberships starting at \\$2.50/m!](#)

**Follow me
on Twitter!**

@ConvertingColor