

Converting Colors

Hex(D5A3A6)

Have a look what the booklet for
Hex(D5A3A6) contains.

Hex(D5A3A6)	3
<i>Conversions</i>	4
<i>Details</i>	6
<i>Harmonies</i>	11
<i>Previews</i>	23
<i>Color Blindness Simulation</i>	26
<i>CSS Examples</i>	29

Color

Hex(D5A3A6)

Conversions

Conversions Part 1

Format	Color
Hex	D5A3A6
RGB	213, 163, 166
RGB Percent	84%, 64%, 65%
CMY	0.1647, 0.3608, 0.3490
CMYK	0.00, 0.23, 0.22, 0.16
HSL	356°, 37%, 74%
HSV	356°, 23%, 84%
XYZ	47.4207, 43.0937, 41.8950
YIQ	178.2920, 28.8370, 11.5330

Conversions

Conversions Part 2

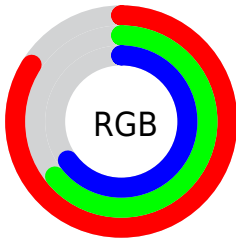
Format	Color
R _Y B	213, 163, 166
Decimal	14001062
CIE Lab	71.62, 18.90, 5.60
CIE LCh	72, 19.710, 16.505
Yxy	43.0937, 0.3581, 0.3255
Android (android.graphics.Color)	4292191142 (0xFFD5A3A6)
YUV	178.2920, -6.0600, 30.4389
Hunter-Lab	65.6458, 14.0633, 8.1133

Details

The Hex color **D5A3A6** is a light color, and the websafe version is hex **CC9999**. A complement of this color would be **A3D5D2**, and the grayscale version is **B2B2B2**.

A 20% lighter version of the original color is **FFDADD**, and **9D6F72** is the 20% darker color. If you saturate the color by 10%, you get **D58E92**, and if you desaturate by 10%, it is **D5B8BA**.

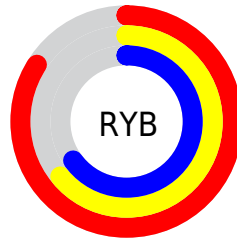
Distribution



Red (84%)

Green (64%)

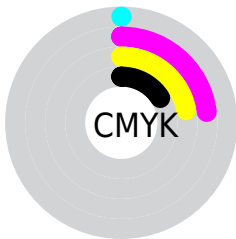
Blue (65%)



Red (84%)

Yellow (64%)

Blue (65%)

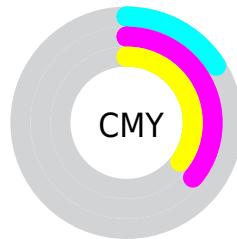


Cyan (0%)

Magenta (23%)

Yellow (22%)

Black (16%)



Cyan (16%)

Magenta (36%)

Yellow (35%)

Brightness & Saturation Gradients

These gradients show how the Hex color D5A3A6 changes by changing the brightness by 10 percent. The first figure shows a shift by +10% for each color and the second figure -10%.

Similar to the brightness gradients but the following saturation gradients show a change of the Hex color D5A3A6 by changing the saturation by 10% instead.

 D5A3A6

 D5A3A6

FFFFFF

 B9898C

 FFDADD

 9D6F72

 FFF7FA

 83565A

 693F42

 50282C

 381318

 240000

 000000

 D5A3A6

 D5A3A6

 D58E92

 D5B8BA

 D5787E

 D5CECE

 D5636A

 D5E3E2

 D54E56

 D5F8F6

 D53842

 D5FFFF

 D5232E

 D50E1A

 D5000D

Harmonies

Analogous

The Analogous color harmony consists of three colors that are next to each other on the color wheel.



CFA4B8



D5A3A6



D1A696

Triad

The Triadic color harmony groups three colors that are evenly spaced from another and form a triangle on the color wheel.



D5A3A6



9EB696



91B4D2

Complementary

The Complementary color scheme is a pair of colors which are on the opposite of each other on the color wheel.



D5A3A6



A3D5D2

Split Complementary

Split-complementary colors differ from the complementary color scheme. The scheme consists of three colors, the original color and two neighbors of the complement color.



81B8C9



D5A3A6



8BB9A6

Square

The Square scheme is like the rectangle color scheme, but the four colors are evenly spaced on the color wheel.



D5A3A6



B3B18D



80BAB9



A8AED2

Rectangle

The Rectangle color scheme consists of four colors that form a rectangle on the color wheel.



D5A3A6



CAA8F



80BAB9



8AB5D0

Sweetspot

The Sweet Spot groups the original color and five complimentary colors.



D5A3A6



FFEDEE



D2A3D5



807576



000000



808080

Same Dimension

The Same Dimension uses a secret algorithm to generate beautiful new colors.



D5A3A6



FFB8BC



D5B9A3



6B6061



AB000A



2B0003

Inverse Universe

The Inverse Universe completely reimagines the original color for something new.



D5A3A6



FFB8BC



A3BFD5



6B6061



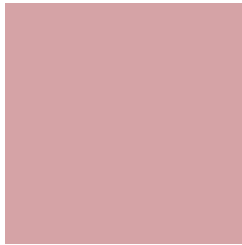
AB000A



2B0003

Previews

White Background



This preview shows how the Hex color D5A3A6 looks on a white background.

Color Contrast Check

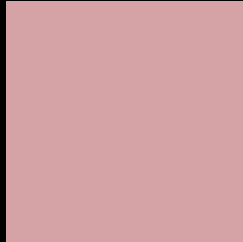
Large Text (above 18pt) WCAG AA × Fail

Any Text WCAG AA × Fail

Large Text (above 18pt) WCAG AAA × Fail

Any Text WCAG AAA × Fail

Black Background



This preview shows how the Hex color D5A3A6 looks on a black background.

Color Contrast Check

Large Text (above 18pt) WCAG AA ✓ Pass

Any Text WCAG AA ✓ Pass

Large Text (above 18pt) WCAG AAA ✓ Pass

Any Text WCAG AAA ✓ Pass

If you want to check with other color combinations, try the [Color Contrast Checker](#).

Hex D5A3A6 Background



This preview shows how black text looks on a background with the Hex color D5A3A6.

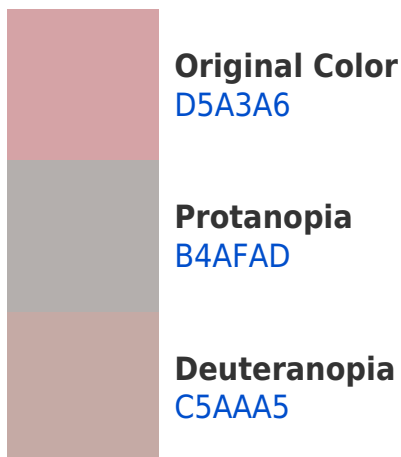


This preview shows how white text looks on a background with the Hex color D5A3A6.

Color Blindness Simulation

Color vision deficiency is a very complex topic, and I could not describe the different causes any better than Wikipedia does, so if you want to learn more, you should check out their [article about color blindness](#).

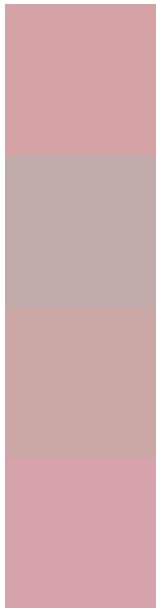
Dichromacy





Tritanopia
D6A2AE

Trichromacy



Original Color
D5A3A6

Protanomaly
C0ABAA

Deuteranomaly
CBA7A5

Tritanomaly
D6A2AB

Monochromacy



Original Color
D5A3A6

Achromatopsia
B2B2B2

Achromatomaly
BFADAE

CSS Examples

Text

The CSS property to change the color of the text to Hex D5A3A6 is called "color". The color property can be set on classes, ids or directly on the HTML element.

This example shows how text in the color #D5A3A6 looks like.

```
.text, #text, p{  
    color:#D5A3A6  
}
```

If you want to add a text shadow in that color use the text-shadow property, you can generate a text shadow directly with our [CSS Text Shadow Generator](#).

Here you see how black text with a 4 pixel #D5A3A6 colored shadow looks like.

```
.shadow{ text-shadow: 4px 4px 2px #D5A3A6
}
```

Border

The CSS property to change the border of an element to Hex D5A3A6 is called "border". The border property can be set on classes, ids or directly on the HTML element.

This example shows the color as border, it can be applied via the CSS property "border" or "border-color".

```
.border, #border, table{ border:4px solid
#D5A3A6 }
```

If only the border color should be changed use the property `border-color`.

```
.border{ border-color:#D5A3A6 }
```

If you want to add a box shadow in that color use:

Here you see how a box with a 4 pixel #D5A3A6 colored shadow looks like.

```
.boxshadow{ -moz-box-shadow:4px 4px 4px  
4px #D5A3A6; -webkit-box-shadow:4px 4px  
4px 4px #D5A3A6; box-shadow:4px 4px 4px  
4px #D5A3A6 }
```

Background

The CSS property to change the background color of an element to Hex D5A3A6 is called "background". The background property can be set on classes, ids or directly on the HTML element.

```
.background, #background, body{  
background:#D5A3A6 }
```

If only the background color should be changed can be used:

```
.background{ background-color:#D5A3A6 }
```

This example shows the color as background, it is applied via the CSS property "background".

To optimize and compress your CSS code, you can use our [online CSS compressor and optimizer](#) based on csstidy. If you want to create a linear or radial gradient as background or border, check our [CSS Gradient Generator](#).

Hey! You found this booklet interesting? Support Converting Colors with the new Membership Option!

The pro membership hides all ads, plus gives you double the colors in the color bucket, and more awesome pro features!

[Learn more, Memberships starting at \\$2.50/m!](#)

**Follow me
on Twitter!**

@ConvertingColor