

Converting Colors

Hex(D5A689)

Have a look what the booklet for
Hex(D5A689) contains.

Hex(D5A689)	3
<i>Conversions</i>	4
<i>Details</i>	6
<i>Harmonies</i>	11
<i>Previews</i>	23
<i>Color Blindness Simulation</i>	26
<i>CSS Examples</i>	29

Color

Hex(D5A689)

Conversions

Conversions Part 1

Format	Color
Hex	D5A689
RGB	213, 166, 137
RGB Percent	84%, 65%, 54%
CMY	0.1647, 0.3490, 0.4627
CMYK	0.00, 0.22, 0.36, 0.16
HSL	23°, 48%, 69%
HSV	23°, 36%, 84%
XYZ	45.5921, 43.2247, 29.6071
YIQ	176.7470, 37.3210, 0.9450

Conversions

Conversions Part 2

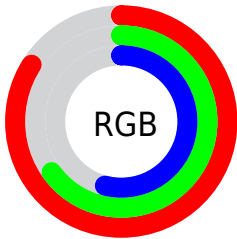
Format	Color
R_{YB}	213, 184, 137
Decimal	14001801
CIE _{Lab}	71.71, 13.35, 21.65
CIE _{LCh}	72, 25.434, 58.336
Yxy	43.2247, 0.3850, 0.3650
Android (android.graphics.Color)	4292191881 (0xFFD5A689)
YUV	176.7470, -19.5953, 31.7939
Hunter-Lab	65.7455, 8.7287, 19.3218

Details

The Hex color **D5A689** is a light color, and the websafe version is hex **CC9966**. A complement of this color would be **89B8D5**, and the grayscale version is **B1B1B1**.

A 20% lighter version of the original color is **FFDDBF**, and **9D7257** is the 20% darker color. If you saturate the color by 10%, you get **D59974**, and if you desaturate by 10%, it is **D5B39E**.

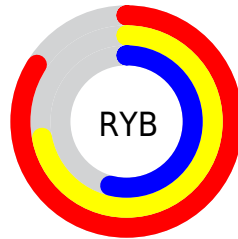
Distribution



Red (84%)

Green (65%)

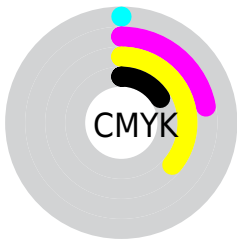
Blue (54%)



Red (84%)

Yellow (72%)

Blue (54%)

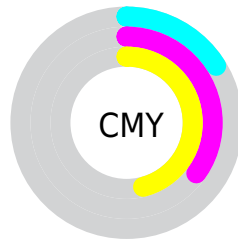


Cyan (0%)

Magenta (22%)

Yellow (36%)

Black (16%)



Cyan (16%)

Magenta (35%)

Yellow (46%)

Brightness & Saturation Gradients

These gradients show how the Hex color D5A689 changes by changing the brightness by 10 percent. The first figure shows a shift by +10% for each color and the second figure -10%.

Similar to the brightness gradients but the following saturation gradients show a change of the Hex color D5A689 by changing the saturation by 10% instead.

 D5A689

FFFFFF

 FFDDBF

 FFFADA

 FFFFF7

 D5A689

 B98C6F

 9D7257

 82593F

 674229

 4E2C14

 361700

 1F0000

 000000

 D5A689

 D5A689

 D59974

 D5B39E

 D58C5E

 D5C0B4

 D57E49

 D5CEC9

 D57134

 D5DBDE

 D5641E

 D5E8F4

 D55709

 D5F5FF

 D55100

 D5FFFF

Harmonies

Analogous

The Analogous color harmony consists of three colors that are next to each other on the color wheel.



DFA09B



D5A689



C2AE81

Triad

The Triadic color harmony groups three colors that are evenly spaced from another and form a triangle on the color wheel.



D5A689



77BDAE



B2AAD8

Complementary

The Complementary color scheme is a pair of colors which are on the opposite of each other on the color wheel.



D5A689



89B8D5

Split Complementary

Split-complementary colors differ from the complementary color scheme. The scheme consists of three colors, the original color and two neighbors of the complement color.



91B2DE



D5A689



6CBCC5

Square

The Square scheme is like the rectangle color scheme, but the four colors are evenly spaced on the color wheel.



D5A689



8FBA97



76B9D6



CCA3C8

Rectangle

The Rectangle color scheme consists of four colors that form a rectangle on the color wheel.



D5A689



B2B383



76B9D6



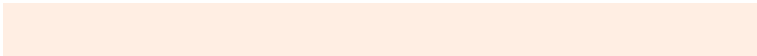
A7ADDB

Sweetspot

The Sweet Spot groups the original color and five complimentary colors.



D5A689



FFEEE3



D589B9



80756F



000000



808080

Same Dimension

The Same Dimension uses a secret algorithm to generate beautiful new colors.



D5A689



FFBB91



D5CB89



6B6460



AB4100



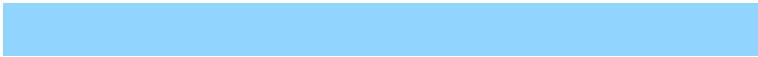
2B1100

Inverse Universe

The Inverse Universe completely reimagines the original color for something new.



89B8D5



91D5FF



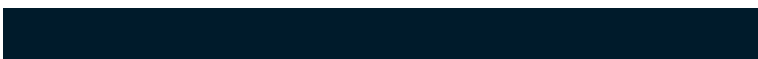
8993D5



60676B



006AAB



001B2B

Previews

White Background



This preview shows how the Hex color D5A689 looks on a white background.

Color Contrast Check

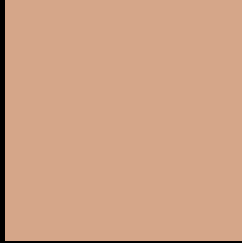
Large Text (above 18pt) WCAG AA × Fail

Any Text WCAG AA × Fail

Large Text (above 18pt) WCAG AAA × Fail

Any Text WCAG AAA × Fail

Black Background



This preview shows how the Hex color D5A689 looks on a black background.

Color Contrast Check

Large Text (above 18pt) WCAG AA ✓ Pass

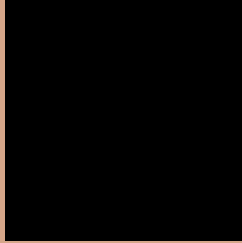
Any Text WCAG AA ✓ Pass

Large Text (above 18pt) WCAG AAA ✓ Pass

Any Text WCAG AAA ✓ Pass

If you want to check with other color combinations, try the [Color Contrast Checker](#).

Hex D5A689 Background



This preview shows how black text looks on a background with the Hex color D5A689.

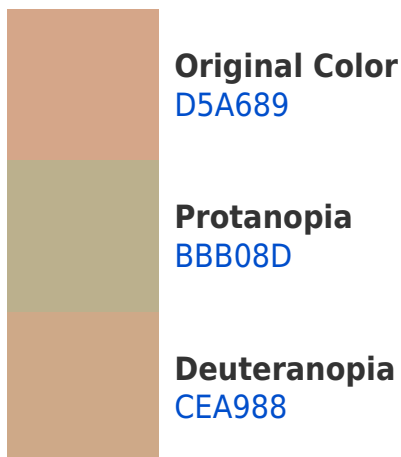


This preview shows how white text looks on a background with the Hex color D5A689.

Color Blindness Simulation

Color vision deficiency is a very complex topic, and I could not describe the different causes any better than Wikipedia does, so if you want to learn more, you should check out their [article about color blindness](#).

Dichromacy





Tritanopia
D9A1AD

Trichromacy



Original Color
D5A689

Protanomaly
C4AC8C

Deuteranomaly
D1A888

Tritanomaly
D8A3A0

Monochromacy



Original Color
D5A689

Achromatopsia
B1B1B1

Achromatomaly
BEADA2

CSS Examples

Text

The CSS property to change the color of the text to Hex D5A689 is called "color". The color property can be set on classes, ids or directly on the HTML element.

This example shows how text in the color #D5A689 looks like.

```
.text, #text, p{  
    color:#D5A689  
}
```

If you want to add a text shadow in that color use the text-shadow property, you can generate a text shadow directly with our [CSS Text Shadow Generator](#).

Here you see how black text with a 4 pixel #D5A689 colored shadow looks like.

```
.shadow{ text-shadow: 4px 4px 2px #D5A689
}
```

Border

The CSS property to change the border of an element to Hex D5A689 is called "border". The border property can be set on classes, ids or directly on the HTML element.

This example shows the color as border, it can be applied via the CSS property "border" or "border-color".

```
.border, #border, table{ border:4px solid
#D5A689 }
```

If only the border color should be changed use the property `border-color`.

```
.border{ border-color:#D5A689 }
```

If you want to add a box shadow in that color use:

Here you see how a box with a 4 pixel #D5A689 colored shadow looks like.

```
.boxshadow{ -moz-box-shadow:4px 4px 4px  
4px #D5A689; -webkit-box-shadow:4px 4px  
4px 4px #D5A689; box-shadow:4px 4px 4px  
4px #D5A689 }
```

Background

The CSS property to change the background color of an element to Hex D5A689 is called "background". The background property can be set on classes, ids or directly on the HTML element.

```
.background, #background, body{  
background:#D5A689 }
```

If only the background color should be changed can be used:

```
.background{ background-color:#D5A689 }
```

This example shows the color as background, it is applied via the CSS property "background".

To optimize and compress your CSS code, you can use our [online CSS compressor and optimizer](#) based on csstidy. If you want to create a linear or radial gradient as background or border, check our [CSS Gradient Generator](#).

Hey! You found this booklet interesting? Support Converting Colors with the new Membership Option!

The pro membership hides all ads, plus gives you double the colors in the color bucket, and more awesome pro features!

[Learn more, Memberships starting at \\$2.50/m!](#)

**Follow me
on Twitter!**

@ConvertingColor