

# Converting Colors

Hex(D5A7B6)

Have a look what the booklet for  
Hex(D5A7B6) contains.

<b>Hex(D5A7B6)</b> .....	3
<i><b>Conversions</b></i> .....	4
<i><b>Details</b></i> .....	6
<i><b>Harmonies</b></i> .....	11
<i><b>Previews</b></i> .....	23
<i><b>Color Blindness Simulation</b></i> .....	26
<i><b>CSS Examples</b></i> .....	29

# **Color**

**Hex(D5A7B6)**

# Conversions

## Conversions Part 1

Format	Color
Hex	D5A7B6
RGB	213, 167, 182
RGB Percent	84%, 65%, 71%
CMY	0.1647, 0.3451, 0.2863
CMYK	0.00, 0.22, 0.15, 0.16
HSL	340°, 35%, 75%
HSV	340°, 22%, 84%
XYZ	49.7028, 45.1610, 50.3533
YIQ	182.4640, 22.6010, 14.4170

# Conversions

## Conversions Part 2

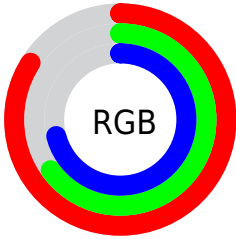
<b>Format</b>	<b>Color</b>
R <sub>Y</sub> B	213, 167, 182
Decimal	14002102
CIE Lab	73.00, 19.21, -1.22
CIE LCh	73, 19.254, 356.372
Yxy	45.1610, 0.3423, 0.3110
Android (android.graphics.Color)	4292192182 (0xFFD5A7B6)
YUV	182.4640, -0.2288, 26.7801
Hunter-Lab	67.2019, 14.4159, 2.6163

# Details

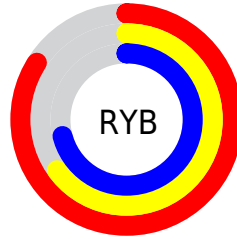
The Hex color **D5A7B6** is a light color, and the websafe version is hex **CC9999**. A complement of this color would be **A7D5C6**, and the grayscale version is **B6B6B6**.

A 20% lighter version of the original color is **FFDEEE**, and **9E7381** is the 20% darker color. If you saturate the color by 10%, you get **D592A8**, and if you desaturate by 10%, it is **D5BCC4**.

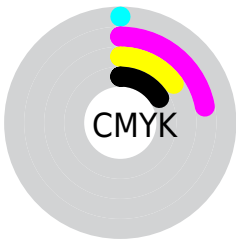
# Distribution



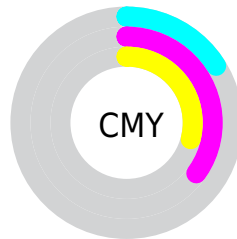
- Red (84%)
- Green (65%)
- Blue (71%)



- Red (84%)
- Yellow (65%)
- Blue (71%)



- Cyan (0%)
- Magenta (22%)
- Yellow (15%)
- Black (16%)



- Cyan (16%)
- Magenta (35%)
- Yellow (29%)

# Brightness & Saturation Gradients

These gradients show how the Hex color D5A7B6 changes by changing the brightness by 10 percent. The first figure shows a shift by +10% for each color and the second figure -10%.

Similar to the brightness gradients but the following saturation gradients show a change of the Hex color D5A7B6 by changing the saturation by 10% instead.



 D5A7B6

 D5A7B6

FFFFFF

 B98C9B

 FFDEEE

 9E7381

 FFFBFF

 835A68

 6A4250

 512C39

 391624

 25000E

 000000

 D5A7B6

 D5A7B6

 D592A8

 D5BCC4

 D57C99

 D5D2D3

 D5678B

 D5E7E1

 D5527D

 D5FCEF

 D53C6E

 D5FFFE

 D52760

 D5FFFF

 D51252

 D50045

# Harmonies

## Analogous

The Analogous color harmony consists of three colors that are next to each other on the color wheel.



C8AAC7



D5A7B6



D8A8A4

# Triad

The Triadic color harmony groups three colors that are evenly spaced from another and form a triangle on the color wheel.



D5A7B6



B0B793



8ABAD0

# Complementary

The Complementary color scheme is a pair of colors which are on the opposite of each other on the color wheel.



D5A7B6



A7D5C6

# Split Complementary

Split-complementary colors differ from the complementary color scheme. The scheme consists of three colors, the original color and two neighbors of the complement color.



84BDC2



D5A7B6



9CBB9F

# Square

The Square scheme is like the rectangle color scheme, but the four colors are evenly spaced on the color wheel.



D5A7B6



C3B190



8BBDB0



9CB5D6

# Rectangle

The Rectangle color scheme consists of four colors that form a rectangle on the color wheel.



D5A7B6



D5AA9A



8BDB0



86BBCC



# Sweetspot

The Sweet Spot groups the original color and five complimentary colors.



D5A7B6



FFF0F5



C6A7D5



807779



000000



808080



# Same Dimension

The Same Dimension uses a secret algorithm to generate beautiful new colors.



D5A7B6



FFBDD2



D5AFA7



6B6064



AB0038



2B000E



# Inverse Universe

The Inverse Universe completely reimagines the original color for something new.



D5A7B6



FFBDD2



A7CDD5



6B6064



AB0038

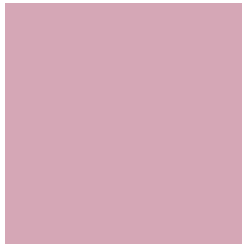


2B000E



# Previews

## White Background



This preview shows how the Hex color D5A7B6 looks on a white background.

## Color Contrast Check

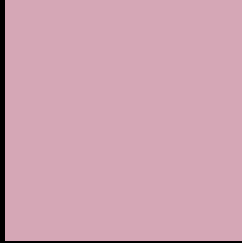
Large Text (above 18pt) WCAG AA × Fail

Any Text WCAG AA × Fail

Large Text (above 18pt) WCAG AAA × Fail

Any Text WCAG AAA × Fail

# Black Background



This preview shows how the Hex color D5A7B6 looks on a black background.

## Color Contrast Check

Large Text (above 18pt) WCAG AA ✓ Pass

Any Text WCAG AA ✓ Pass

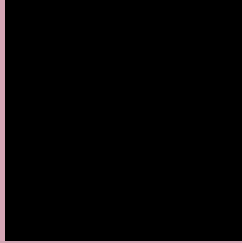
Large Text (above 18pt) WCAG AAA ✓ Pass

Any Text WCAG AAA ✓ Pass

If you want to check with other color combinations, try the [Color Contrast Checker](#).



## Hex D5A7B6 Background



This preview shows how black text looks on a background with the Hex color D5A7B6.

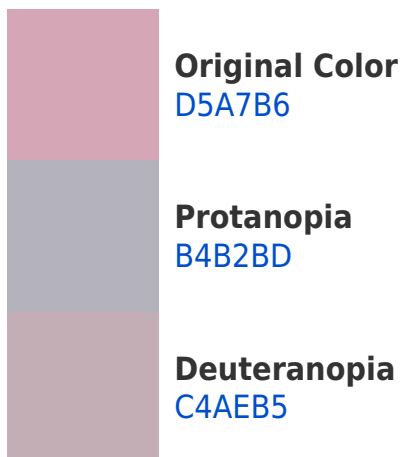


This preview shows how white text looks on a background with the Hex color D5A7B6.

# Color Blindness Simulation

Color vision deficiency is a very complex topic, and I could not describe the different causes any better than Wikipedia does, so if you want to learn more, you should check out their [article about color blindness](#).

## Dichromacy





**Tritanopia**  
D5A7B4

# Trichromacy



**Original Color**  
D5A7B6

**Protanomaly**  
C0AEBA

**Deuteranomaly**  
CAABB5

**Tritanomaly**  
D5A7B5

# Monochromacy



**Original Color**  
D5A7B6

**Achromatopsia**  
B6B6B6

**Achromatomaly**  
C1B1B6

# CSS Examples

## Text

The CSS property to change the color of the text to Hex D5A7B6 is called "color". The color property can be set on classes, ids or directly on the HTML element.

This example shows how text in the color #D5A7B6 looks like.

```
.text, #text, p{  
    color:#D5A7B6  
}
```

If you want to add a text shadow in that color use the text-shadow property, you can generate a text shadow directly with our [CSS Text Shadow Generator](#).

Here you see how black text with a 4 pixel #D5A7B6 colored shadow looks like.

```
.shadow{ text-shadow: 4px 4px 2px #D5A7B6  
}
```

## Border

The CSS property to change the border of an element to Hex D5A7B6 is called "border". The border property can be set on classes, ids or directly on the HTML element.

This example shows the color as border, it can be applied via the CSS property "border" or "border-color".

```
.border, #border, table{ border:4px solid  
#D5A7B6 }
```

If only the border color should be changed use the property `border-color`.

```
.border{ border-color:#D5A7B6 }
```

If you want to add a box shadow in that color use:

Here you see how a box with a 4 pixel #D5A7B6 colored shadow looks like.

```
.boxshadow{ -moz-box-shadow:4px 4px 4px  
4px #D5A7B6; -webkit-box-shadow:4px 4px  
4px 4px #D5A7B6; box-shadow:4px 4px 4px  
4px #D5A7B6 }
```

# Background

The CSS property to change the background color of an element to Hex D5A7B6 is called "background". The background property can be set on classes, ids or directly on the HTML element.

```
.background, #background, body{  
background:#D5A7B6 }
```

If only the background color should be changed can be used:

```
.background{ background-color:#D5A7B6 }
```

This example shows the color as background, it is applied via the CSS property "background".

To optimize and compress your CSS code, you can use our [online CSS compressor and optimizer](#) based on csstidy. If you want to create a linear or radial gradient as background or border, check our [CSS Gradient Generator](#).



Hey! You found this booklet interesting? Support Converting Colors with the new Membership Option!

The pro membership hides all ads, plus gives you double the colors in the color bucket, and more awesome pro features!

**[Learn more, Memberships starting at \\$2.50/m!](#)**

**Follow me  
on Twitter!**

@ConvertingColor