

# Converting Colors

Hex(D5AAAA)

Have a look what the booklet for  
Hex(D5AAAA) contains.

<b>Hex(D5AAAA)</b> .....	3
<b><i>Conversions</i></b> .....	4
<b><i>Details</i></b> .....	6
<b><i>Harmonies</i></b> .....	11
<b><i>Previews</i></b> .....	23
<b><i>Color Blindness Simulation</i></b> .....	26
<b><i>CSS Examples</i></b> .....	29

# **Color**

**Hex(D5AAAA)**

# Conversions

## Conversions Part 1

Format	Color
Hex	D5AAAA
RGB	213, 170, 170
RGB Percent	84%, 67%, 67%
CMY	0.1647, 0.3333, 0.3333
CMYK	0.00, 0.20, 0.20, 0.16
HSL	0°, 34%, 75%
HSV	0°, 20%, 84%
XYZ	49.0710, 45.7979, 44.2838
YIQ	182.8570, 25.6280, 9.1160

# Conversions

## Conversions Part 2

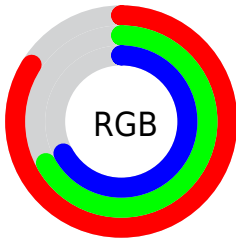
Format	Color
R <sub>Y</sub> B	213, 170, 170
Decimal	14002858
CIE Lab	73.41, 15.71, 5.98
CIE LCh	73, 16.806, 20.850
Yxy	45.7979, 0.3526, 0.3291
Android (android.graphics.Color)	4292192938 (0xFFD5AAAA)
YUV	182.8570, -6.3385, 26.4354
Hunter-Lab	67.6741, 11.0019, 8.5744

# Details

The Hex color **D5AAAA** is a light color, and the websafe version is hex **CC9999**. A complement of this color would be **AAD5D5**, and the grayscale version is **B7B7B7**.

A 20% lighter version of the original color is **FFE1E1**, and **9E7676** is the 20% darker color. If you saturate the color by 10%, you get **D59595**, and if you desaturate by 10%, it is **D5BFBF**.

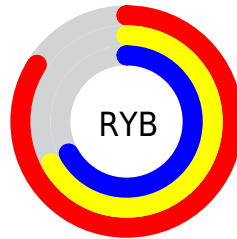
# Distribution



Red (84%)

Green (67%)

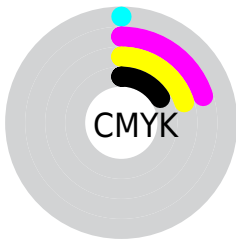
Blue (67%)



Red (84%)

Yellow (67%)

Blue (67%)

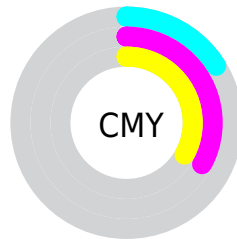


Cyan (0%)

Magenta (20%)

Yellow (20%)

Black (16%)



Cyan (16%)

Magenta (33%)

Yellow (33%)

# Brightness & Saturation Gradients

These gradients show how the Hex color D5AAAA changes by changing the brightness by 10 percent. The first figure shows a shift by +10% for each color and the second figure -10%.

Similar to the brightness gradients but the following saturation gradients show a change of the Hex color D5AAAA by changing the saturation by 10% instead.



 D5AAAA

 D5AAAA

FFFFFF

 B98F90

 FFE1E1

 9E7676

FFFEFE

 835D5D

 694546

 502E2F

 38191B

 250000

 000000

 D5AAAA

 D5AAAA

 D59595

 D5BFBF

 D57F7F

 D5D5D5

 D56A6A

 D5EAEA

 D55555

 D5FFFF

 D53F3F

 D52A2A

 D51515

 D50000

# Harmonies

## Analogous

The Analogous color harmony consists of three colors that are next to each other on the color wheel.



D1AABA



D5AAAA



D1AD9D

# Triad

The Triadic color harmony groups three colors that are evenly spaced from another and form a triangle on the color wheel.



D5AAAA



A3BBA1



9EB7D2

# Complementary

The Complementary color scheme is a pair of colors which are on the opposite of each other on the color wheel.



D5AAAA



AAD5D5

# Split Complementary

Split-complementary colors differ from the complementary color scheme. The scheme consists of three colors, the original color and two neighbors of the complement color.



8FBBCC



D5AAAA



94BDAF

# Square

The Square scheme is like the rectangle color scheme, but the four colors are evenly spaced on the color wheel.



D5AAAA



B5B797



8CBDBF



B1B2D1

# Rectangle

The Rectangle color scheme consists of four colors that form a rectangle on the color wheel.



D5AAAA



CAB098



8CBDBF



98B9D1



# Sweetspot

The Sweet Spot groups the original color and five complimentary colors.



D5AAAA



FFF0F0



D5AAD5



807777



000000



808080



# Same Dimension

The Same Dimension uses a secret algorithm to generate beautiful new colors.



D5AAAA



FFC2C2



D5C0AA



6B6060



AB0000



2B0000



# Inverse Universe

The Inverse Universe completely reimagines the original color for something new.



AAD5D5



C2FFFF



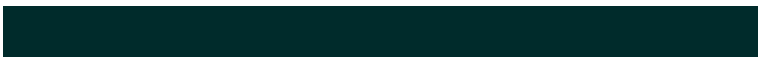
AAC0D5



606B6B



00ABAB

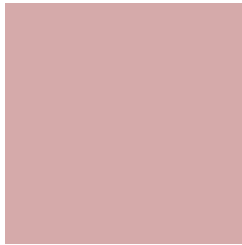


002B2B



# Previews

## White Background



This preview shows how the Hex color D5AAAA looks on a white background.

## Color Contrast Check

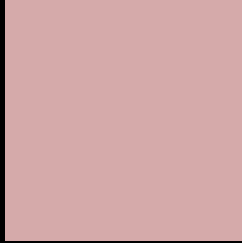
Large Text (above 18pt) WCAG AA × Fail

Any Text WCAG AA × Fail

Large Text (above 18pt) WCAG AAA × Fail

Any Text WCAG AAA × Fail

# Black Background



This preview shows how the Hex color D5AAAA looks on a black background.

## Color Contrast Check

Large Text (above 18pt) WCAG AA ✓ Pass

Any Text WCAG AA ✓ Pass

Large Text (above 18pt) WCAG AAA ✓ Pass

Any Text WCAG AAA ✓ Pass

If you want to check with other color combinations, try the [Color Contrast Checker](#).



## Hex D5AAAA Background



This preview shows how black text looks on a background with the Hex color D5AAAA.

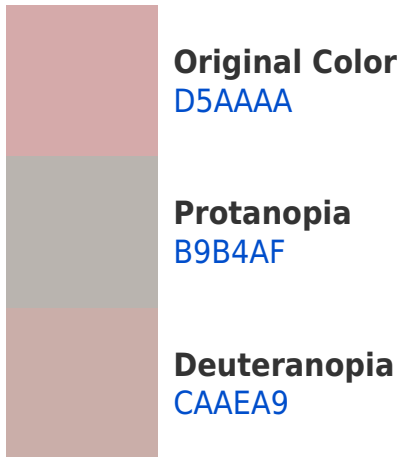


This preview shows how white text looks on a background with the Hex color D5AAAA.

# Color Blindness Simulation

Color vision deficiency is a very complex topic, and I could not describe the different causes any better than Wikipedia does, so if you want to learn more, you should check out their [article about color blindness](#).

## Dichromacy





**Tritanopia**  
D6A8B5

# Trichromacy



**Original Color**

D5AAAA

**Protanomaly**

C3B0AD

**Deuteranomaly**

CEADA9

**Tritanomaly**

D6A9B1

# Monochromacy



**Original Color**

D5AAAA

**Achromatopsia**

B7B7B7

**Achromatomaly**

C2B2B2

# CSS Examples

## Text

The CSS property to change the color of the text to Hex D5AAAA is called "color". The color property can be set on classes, ids or directly on the HTML element.

This example shows how text in the color #D5AAAA looks like.

```
.text, #text, p{  
    color:#D5AAAA  
}
```

If you want to add a text shadow in that color use the text-shadow property, you can generate a text shadow directly with our [CSS Text Shadow Generator](#).

Here you see how black text with a 4 pixel #D5AAAA colored shadow looks like.

```
.shadow{ text-shadow: 4px 4px 2px #D5AAAA
}
```

## Border

The CSS property to change the border of an element to Hex D5AAAA is called "border". The border property can be set on classes, ids or directly on the HTML element.

This example shows the color as border, it can be applied via the CSS property "border" or "border-color".

```
.border, #border, table{ border:4px solid
#D5AAAA }
```

If only the border color should be changed use the property `border-color`.

```
.border{ border-color:#D5AAAA }
```

If you want to add a box shadow in that color use:

Here you see how a box with a 4 pixel #D5AAAA colored shadow looks like.

```
.boxshadow{ -moz-box-shadow:4px 4px 4px  
4px #D5AAAA; -webkit-box-shadow:4px 4px  
4px 4px #D5AAAA; box-shadow:4px 4px 4px  
4px #D5AAAA }
```

# Background

The CSS property to change the background color of an element to Hex D5AAAA is called "background". The background property can be set on classes, ids or directly on the HTML element.

```
.background, #background, body{  
background:#D5AAAA }
```

If only the background color should be changed can be used:

```
.background{ background-color:#D5AAAA }
```

This example shows the color as background, it is applied via the CSS property "background".

To optimize and compress your CSS code, you can use our [online CSS compressor and optimizer](#) based on csstidy. If you want to create a linear or radial gradient as background or border, check our [CSS Gradient Generator](#).



Hey! You found this booklet interesting? Support Converting Colors with the new Membership Option!

The pro membership hides all ads, plus gives you double the colors in the color bucket, and more awesome pro features!

**[Learn more, Memberships starting at \\$2.50/m!](#)**

**Follow me  
on Twitter!**

@ConvertingColor