

Converting Colors

Hex(D5AC8A)

Have a look what the booklet for
Hex(D5AC8A) contains.

Hex(D5AC8A)	3
<i>Conversions</i>	4
<i>Details</i>	6
<i>Harmonies</i>	11
<i>Previews</i>	23
<i>Color Blindness Simulation</i>	26
<i>CSS Examples</i>	29

Color

Hex(D5AC8A)

Conversions

Conversions Part 1

Format	Color
Hex	D5AC8A
RGB	213, 172, 138
RGB Percent	84%, 67%, 54%
CMY	0.1647, 0.3255, 0.4588
CMYK	0.00, 0.19, 0.35, 0.16
HSL	27°, 47%, 69%
HSV	27°, 35%, 84%
XYZ	46.7805, 45.4862, 30.3589
YIQ	180.3830, 35.3500, -1.8820

Conversions

Conversions Part 2

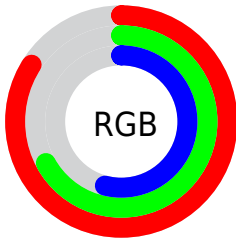
Format	Color
R_{YB}	213, 200, 138
Decimal	14003338
CIE _{Lab}	73.21, 10.24, 23.15
CIE _{LCh}	73, 25.317, 66.138
Yxy	45.4862, 0.3815, 0.3709
Android (android.graphics.Color)	4292193418 (0xFFD5AC8A)
YUV	180.3830, -20.8948, 28.6051
Hunter-Lab	67.4434, 5.7863, 20.5217

Details

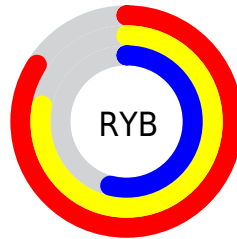
The Hex color **D5AC8A** is a light color, and the websafe version is hex **CC9966**. A complement of this color would be **8AB3D5**, and the grayscale version is **B5B5B5**.

A 20% lighter version of the original color is **FFE3C0**, and **9D7858** is the 20% darker color. If you saturate the color by 10%, you get **D5A075**, and if you desaturate by 10%, it is **D5B89F**.

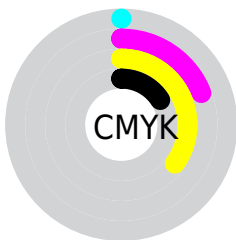
Distribution



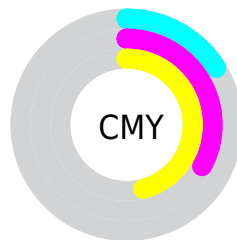
- Red (84%)
- Green (67%)
- Blue (54%)



- Red (84%)
- Yellow (78%)
- Blue (54%)



- Cyan (0%)
- Magenta (19%)
- Yellow (35%)
- Black (16%)



- Cyan (16%)
- Magenta (33%)
- Yellow (46%)

Brightness & Saturation Gradients

These gradients show how the Hex color D5AC8A changes by changing the brightness by 10 percent. The first figure shows a shift by +10% for each color and the second figure -10%.

Similar to the brightness gradients but the following saturation gradients show a change of the Hex color D5AC8A by changing the saturation by 10% instead.

 D5AC8A

 D5AC8A

FFFFFF

 B99170

 FFE3C0

 9D7858

 FFFFDC

 825F40

 FFFFF8

 68472A

 4E3114

 371C00

 1F0300

 000000

 D5AC8A

 D5AC8A

 D5A075

 D5B89F

 D5955F

 D5C3B5

 D5894A

 D5CFCA

 D57D35

 D5DBDF

 D5721F

 D5E6F4

 D5660A

 D5F2FF

 D56100

 D5FEFF

 D5FFFF

Harmonies

Analogous

The Analogous color harmony consists of three colors that are next to each other on the color wheel.



E1A699



D5AC8A



C0B486

Triad

The Triadic color harmony groups three colors that are evenly spaced from another and form a triangle on the color wheel.



D5AC8A



77C1B8



BEACD9

Complementary

The Complementary color scheme is a pair of colors which are on the opposite of each other on the color wheel.



D5AC8A



8AB3D5

Split Complementary

Split-complementary colors differ from the complementary color scheme. The scheme consists of three colors, the original color and two neighbors of the complement color.



9EB4E1



D5AC8A



71C0CE

Square

The Square scheme is like the rectangle color scheme, but the four colors are evenly spaced on the color wheel.



D5AC8A



8CBFA0



80BBDD



D6A6C7

Rectangle

The Rectangle color scheme consists of four colors that form a rectangle on the color wheel.



D5AC8A



AFB98A



80BBDD



B4AFDD

Sweetspot

The Sweet Spot groups the original color and five complimentary colors.



D5AC8A



FFF0E3



D58AB3



80766F



000000



808080

Same Dimension

The Same Dimension uses a secret algorithm to generate beautiful new colors.



D5AC8A



FFC494



D5D18A



6B6560



AB4D00



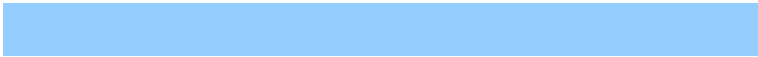
2B1400

Inverse Universe

The Inverse Universe completely reimagines the original color for something new.



8AB3D5



94CEFF



8A8ED5



60666B



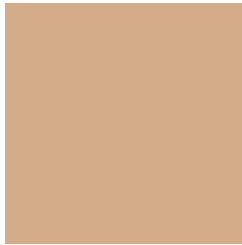
005DAB



00182B

Previews

White Background



This preview shows how the Hex color D5AC8A looks on a white background.

Color Contrast Check

Large Text (above 18pt) WCAG AA × Fail

Any Text WCAG AA × Fail

Large Text (above 18pt) WCAG AAA × Fail

Any Text WCAG AAA × Fail

Black Background



This preview shows how the Hex color D5AC8A looks on a black background.

Color Contrast Check

Large Text (above 18pt) WCAG AA ✓ Pass

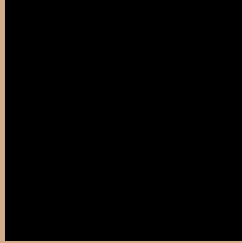
Any Text WCAG AA ✓ Pass

Large Text (above 18pt) WCAG AAA ✓ Pass

Any Text WCAG AAA ✓ Pass

If you want to check with other color combinations, try the [Color Contrast Checker](#).

Hex D5AC8A Background



This preview shows how black text looks on a background with the Hex color D5AC8A.

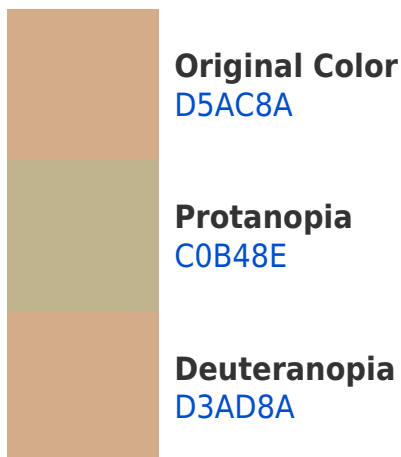


This preview shows how white text looks on a background with the Hex color D5AC8A.

Color Blindness Simulation

Color vision deficiency is a very complex topic, and I could not describe the different causes any better than Wikipedia does, so if you want to learn more, you should check out their [article about color blindness](#).

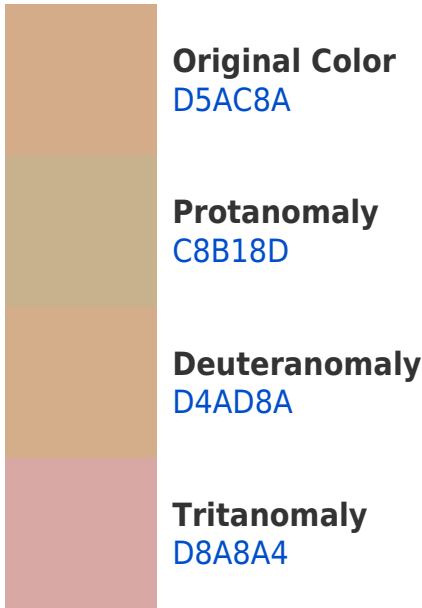
Dichromacy





Tritanopia
D9A6B3

Trichromacy



Monochromacy



CSS Examples

Text

The CSS property to change the color of the text to Hex D5AC8A is called "color". The color property can be set on classes, ids or directly on the HTML element.

This example shows how text in the color #D5AC8A looks like.

```
.text, #text, p{  
    color:#D5AC8A  
}
```

If you want to add a text shadow in that color use the text-shadow property, you can generate a text shadow directly with our [CSS Text Shadow Generator](#).

Here you see how black text with a 4 pixel #D5AC8A colored shadow looks like.

```
.shadow{ text-shadow: 4px 4px 2px #D5AC8A
}
```

Border

The CSS property to change the border of an element to Hex D5AC8A is called "border". The border property can be set on classes, ids or directly on the HTML element.

This example shows the color as border, it can be applied via the CSS property "border" or "border-color".

```
.border, #border, table{ border:4px solid
#D5AC8A }
```

If only the border color should be changed use the property `border-color`.

```
.border{ border-color:#D5AC8A }
```

If you want to add a box shadow in that color use:

Here you see how a box with a 4 pixel #D5AC8A colored shadow looks like.

```
.boxshadow{ -moz-box-shadow:4px 4px 4px  
4px #D5AC8A; -webkit-box-shadow:4px 4px  
4px 4px #D5AC8A; box-shadow:4px 4px 4px  
4px #D5AC8A }
```

Background

The CSS property to change the background color of an element to Hex D5AC8A is called "background". The background property can be set on classes, ids or directly on the HTML element.

```
.background, #background, body{  
background:#D5AC8A }
```

If only the background color should be changed can be used:

```
.background{ background-color:#D5AC8A }
```

This example shows the color as background, it is applied via the CSS property "background".

To optimize and compress your CSS code, you can use our [online CSS compressor and optimizer](#) based on csstidy. If you want to create a linear or radial gradient as background or border, check our [CSS Gradient Generator](#).

Hey! You found this booklet interesting? Support Converting Colors with the new Membership Option!

The pro membership hides all ads, plus gives you double the colors in the color bucket, and more awesome pro features!

[Learn more, Memberships starting at \\$2.50/m!](#)

**Follow me
on Twitter!**

@ConvertingColor