

Converting Colors

Hex(D5AC99)

Have a look what the booklet for
Hex(D5AC99) contains.

Hex(D5AC99)	3
<i>Conversions</i>	4
<i>Details</i>	6
<i>Harmonies</i>	11
<i>Previews</i>	23
<i>Color Blindness Simulation</i>	26
<i>CSS Examples</i>	29

Color

Hex(D5AC99)

Conversions

Conversions Part 1

Format	Color
Hex	D5AC99
RGB	213, 172, 153
RGB Percent	84%, 67%, 60%
CMY	0.1647, 0.3255, 0.4000
CMYK	0.00, 0.19, 0.28, 0.16
HSL	19°, 42%, 72%
HSV	19°, 28%, 84%
XYZ	47.9429, 45.9511, 36.4796
YIQ	182.0930, 30.5350, 2.7830

Conversions

Conversions Part 2

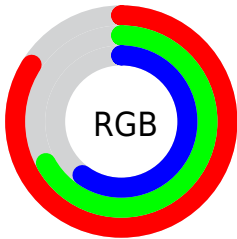
Format	Color
RYB	213, 181, 153
Decimal	14003353
CIELab	73.51, 12.18, 15.43
CIElCh	74, 19.654, 51.709
Yxy	45.9511, 0.3677, 0.3525
Android (android.graphics.Color)	4292193433 (0xFFD5AC99)
YUV	182.0930, -14.3428, 27.1054
Hunter-Lab	67.7872, 7.6174, 15.5443

Details

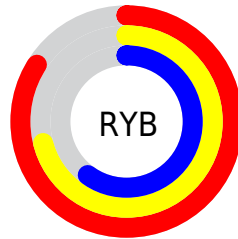
The Hex color **D5AC99** is a light color, and the websafe version is hex **CC9999**. A complement of this color would be **99C2D5**, and the grayscale version is **B6B6B6**.

A 20% lighter version of the original color is **FFE3CF**, and **9D7866** is the 20% darker color. If you saturate the color by 10%, you get **D59D84**, and if you desaturate by 10%, it is **D5BBAE**.

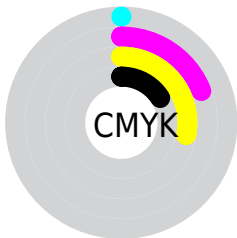
Distribution



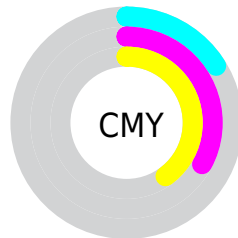
- Red (84%)
- Green (67%)
- Blue (60%)



- Red (84%)
- Yellow (71%)
- Blue (60%)



- Cyan (0%)
- Magenta (19%)
- Yellow (28%)
- Black (16%)



- Cyan (16%)
- Magenta (33%)
- Yellow (40%)

Brightness & Saturation Gradients

These gradients show how the Hex color D5AC99 changes by changing the brightness by 10 percent. The first figure shows a shift by +10% for each color and the second figure -10%.

Similar to the brightness gradients but the following saturation gradients show a change of the Hex color D5AC99 by changing the saturation by 10% instead.

 D5AC99

 D5AC99

FFFFFF

 B9917F

 FFE3CF

 9D7866

 FFFFEC

 835F4E

 694737

 4F3121

 371B0C

 220300

 000000

 D5AC99

 D5AC99

 D59D84

 D5BBAE

 D58F6E

 D5C9C4

 D58059

 D5D8D9

 D57244

 D5E6EE

 D5632F

 D5F5FF

 D55519

 D5FFFF

 D54604

 D54300

Harmonies

Analogous

The Analogous color harmony consists of three colors that are next to each other on the color wheel.



DAA8A8



D5AC99



C7B291

Triad

The Triadic color harmony groups three colors that are evenly spaced from another and form a triangle on the color wheel.



D5AC99



8EBFAF



B1B2D6

Complementary

The Complementary color scheme is a pair of colors which are on the opposite of each other on the color wheel.



D5AC99



99C2D5

Split Complementary

Split-complementary colors differ from the complementary color scheme. The scheme consists of three colors, the original color and two neighbors of the complement color.



9AB8D8



D5AC99



84BFC1

Square

The Square scheme is like the rectangle color scheme, but the four colors are evenly spaced on the color wheel.



D5AC99



A0BC9E



88BCD0



C7ACCB

Rectangle

The Rectangle color scheme consists of four colors that form a rectangle on the color wheel.



D5AC99



BBB691



88BCD0



A9B4D8

Sweetspot

The Sweet Spot groups the original color and five complimentary colors.



D5AC99



FFF1EB



D599C2



807773



000000



808080

Same Dimension

The Same Dimension uses a secret algorithm to generate beautiful new colors.



D5AC99



FFC4A8



D5CA99



6B6460



AB3600



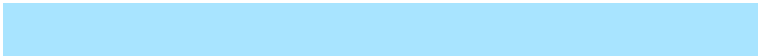
2B0E00

Inverse Universe

The Inverse Universe completely reimagines the original color for something new.



99C2D5



A8E4FF



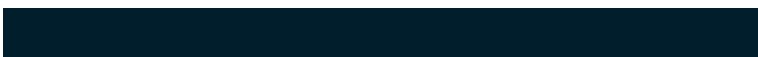
99A4D5



60686B



0075AB



001E2B

Previews

White Background



This preview shows how the Hex color D5AC99 looks on a white background.

Color Contrast Check

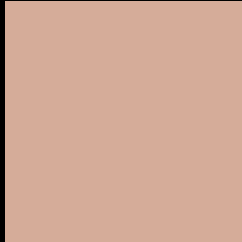
Large Text (above 18pt) WCAG AA × Fail

Any Text WCAG AA × Fail

Large Text (above 18pt) WCAG AAA × Fail

Any Text WCAG AAA × Fail

Black Background



This preview shows how the Hex color D5AC99 looks on a black background.

Color Contrast Check

Large Text (above 18pt) WCAG AA ✓ Pass

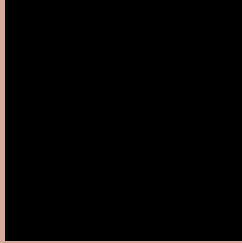
Any Text WCAG AA ✓ Pass

Large Text (above 18pt) WCAG AAA ✓ Pass

Any Text WCAG AAA ✓ Pass

If you want to check with other color combinations, try the [Color Contrast Checker](#).

Hex D5AC99 Background



This preview shows how black text looks on a background with the Hex color D5AC99.

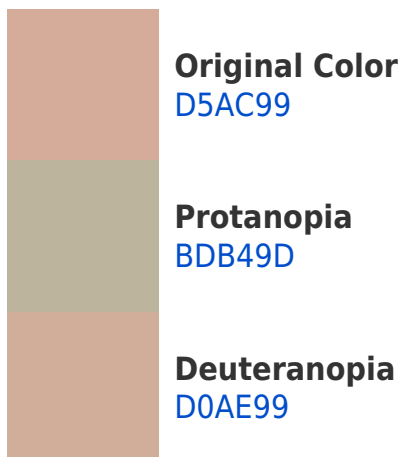


This preview shows how white text looks on a background with the Hex color D5AC99.

Color Blindness Simulation

Color vision deficiency is a very complex topic, and I could not describe the different causes any better than Wikipedia does, so if you want to learn more, you should check out their [article about color blindness](#).

Dichromacy





Tritanopia
D8A8B5

Trichromacy



Original Color
D5AC99

Protanomaly
C6B19C

Deuteranomaly
D2AD99

Tritanomaly
D7A9AB

Monochromacy



Original Color
D5AC99

Achromatopsia
B6B6B6

Achromatomaly
C1B2AB

CSS Examples

Text

The CSS property to change the color of the text to Hex D5AC99 is called "color". The color property can be set on classes, ids or directly on the HTML element.

This example shows how text in the color #D5AC99 looks like.

```
.text, #text, p{  
    color:#D5AC99  
}
```

If you want to add a text shadow in that color use the text-shadow property, you can generate a text shadow directly with our [CSS Text Shadow Generator](#).

Here you see how black text with a 4 pixel #D5AC99 colored shadow looks like.

```
.shadow{ text-shadow: 4px 4px 2px #D5AC99
}
```

Border

The CSS property to change the border of an element to Hex D5AC99 is called "border". The border property can be set on classes, ids or directly on the HTML element.

This example shows the color as border, it can be applied via the CSS property "border" or "border-color".

```
.border, #border, table{ border:4px solid
#D5AC99 }
```

If only the border color should be changed use the property `border-color`.

```
.border{ border-color:#D5AC99 }
```

If you want to add a box shadow in that color use:

Here you see how a box with a 4 pixel #D5AC99 colored shadow looks like.

```
.boxshadow{ -moz-box-shadow:4px 4px 4px  
4px #D5AC99; -webkit-box-shadow:4px 4px  
4px 4px #D5AC99; box-shadow:4px 4px 4px  
4px #D5AC99 }
```

Background

The CSS property to change the background color of an element to Hex D5AC99 is called "background". The background property can be set on classes, ids or directly on the HTML element.

```
.background, #background, body{  
background:#D5AC99 }
```

If only the background color should be changed can be used:

```
.background{ background-color:#D5AC99 }
```

This example shows the color as background, it is applied via the CSS property "background".

To optimize and compress your CSS code, you can use our [online CSS compressor and optimizer](#) based on csstidy. If you want to create a linear or radial gradient as background or border, check our [CSS Gradient Generator](#).

Hey! You found this booklet interesting? Support Converting Colors with the new Membership Option!

The pro membership hides all ads, plus gives you double the colors in the color bucket, and more awesome pro features!

[Learn more, Memberships starting at \\$2.50/m!](#)

**Follow me
on Twitter!**

@ConvertingColor