

Converting Colors

Hex(D5AF9B)

Have a look what the booklet for
Hex(D5AF9B) contains.

Hex(D5AF9B)	3
<i>Conversions</i>	4
<i>Details</i>	6
<i>Harmonies</i>	11
<i>Previews</i>	23
<i>Color Blindness Simulation</i>	26
<i>CSS Examples</i>	29

Color

Hex(D5AF9B)

Conversions

Conversions Part 1

Format	Color
Hex	D5AF9B
RGB	213, 175, 155
RGB Percent	84%, 69%, 61%
CMY	0.1647, 0.3137, 0.3922
CMYK	0.00, 0.18, 0.27, 0.16
HSL	21°, 41%, 72%
HSV	21°, 27%, 84%
XYZ	48.6869, 47.1726, 37.5495
YIQ	184.0820, 29.0680, 1.8360

Conversions

Conversions Part 2

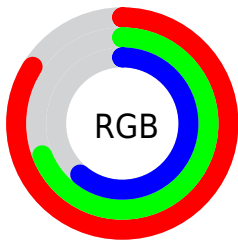
Format	Color
R _Y B	213, 186, 155
Decimal	14004123
CIE Lab	74.30, 10.84, 15.44
CIE LCh	74, 18.862, 54.927
Yxy	47.1726, 0.3649, 0.3536
Android (android.graphics.Color)	4292194203 (0xFFD5AF9B)
YUV	184.0820, -14.3374, 25.3611
Hunter-Lab	68.6823, 6.3394, 15.6630

Details

The Hex color **D5AF9B** is a light color, and the websafe version is hex **CC9999**. A complement of this color would be **9BC1D5**, and the grayscale version is **B8B8B8**.

A 20% lighter version of the original color is **FFE7D1**, and **9D7B68** is the 20% darker color. If you saturate the color by 10%, you get **D5A186**, and if you desaturate by 10%, it is **D5BDB0**.

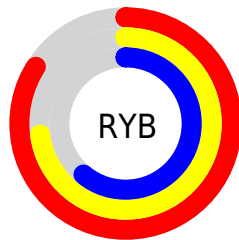
Distribution



Red (84%)

Green (69%)

Blue (61%)



Red (84%)

Yellow (73%)

Blue (61%)

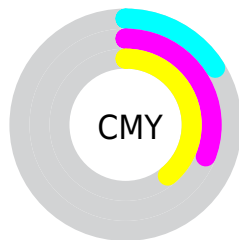


Cyan (0%)

Magenta (18%)

Yellow (27%)

Black (16%)



Cyan (16%)

Magenta (31%)

Yellow (39%)

Brightness & Saturation Gradients

These gradients show how the Hex color D5AF9B changes by changing the brightness by 10 percent. The first figure shows a shift by +10% for each color and the second figure -10%.

Similar to the brightness gradients but the following saturation gradients show a change of the Hex color D5AF9B by changing the saturation by 10% instead.

 D5AF9B

 D5AF9B

FFFFFF

 B99481

 FFE7D1

 9D7B68

 FFFFEE

 836250

 694A39

 503323

 381E0E

 220700

 000000

 D5AF9B

 D5AF9B

 D5A186

 D5BDB0

 D59370

 D5CBC6

 D5855B

 D5D9DB

 D57746

 D5E7F0

 D56930

 D5F5FF

 D55B1B

 D5FFFF

 D54D06

 D54900

Harmonies

Analogous

The Analogous color harmony consists of three colors that are next to each other on the color wheel.



DBABA9



D5AF9B



C7B594

Triad

The Triadic color harmony groups three colors that are evenly spaced from another and form a triangle on the color wheel.



D5AF9B



90C1B3



B6B3D6

Complementary

The Complementary color scheme is a pair of colors which are on the opposite of each other on the color wheel.



D5AF9B



9BC1D5

Split Complementary

Split-complementary colors differ from the complementary color scheme. The scheme consists of three colors, the original color and two neighbors of the complement color.



9FB9D9



D5AF9B



88C0C5

Square

The Square scheme is like the rectangle color scheme, but the four colors are evenly spaced on the color wheel.



D5AF9B



A1BEA2



8EBED2



CBAECB

Rectangle

The Rectangle color scheme consists of four colors that form a rectangle on the color wheel.



D5AF9B



BBB895



8EBED2



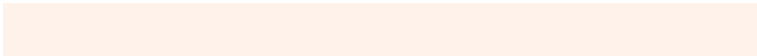
AEB5D8

Sweetspot

The Sweet Spot groups the original color and five complimentary colors.



D5AF9B



FFF2EB



D59BC2



807773



000000



808080

Same Dimension

The Same Dimension uses a secret algorithm to generate beautiful new colors.



D5AF9B



FFC8AB



D5CB9B



6B6460



AB3B00



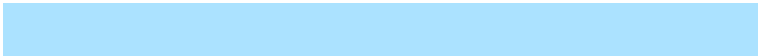
2B0F00

Inverse Universe

The Inverse Universe completely reimagines the original color for something new.



9BC1D5



ABE2FF



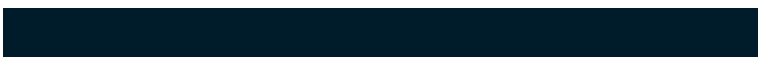
9BA5D5



60676B



0070AB



001C2B

Previews

White Background



This preview shows how the Hex color D5AF9B looks on a white background.

Color Contrast Check

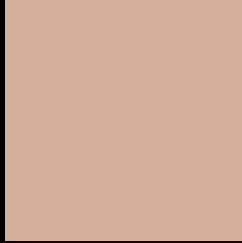
Large Text (above 18pt) WCAG AA × Fail

Any Text WCAG AA × Fail

Large Text (above 18pt) WCAG AAA × Fail

Any Text WCAG AAA × Fail

Black Background



This preview shows how the Hex color D5AF9B looks on a black background.

Color Contrast Check

Large Text (above 18pt) WCAG AA ✓ Pass

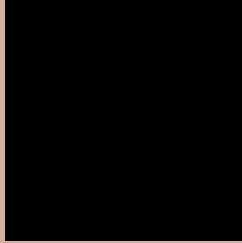
Any Text WCAG AA ✓ Pass

Large Text (above 18pt) WCAG AAA ✓ Pass

Any Text WCAG AAA ✓ Pass

If you want to check with other color combinations, try the [Color Contrast Checker](#).

Hex D5AF9B Background



This preview shows how black text looks on a background with the Hex color D5AF9B.

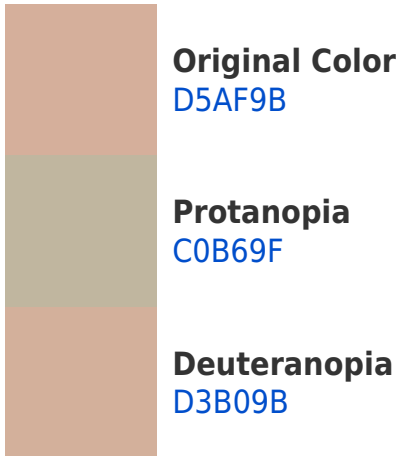


This preview shows how white text looks on a background with the Hex color D5AF9B.

Color Blindness Simulation

Color vision deficiency is a very complex topic, and I could not describe the different causes any better than Wikipedia does, so if you want to learn more, you should check out their [article about color blindness](#).

Dichromacy



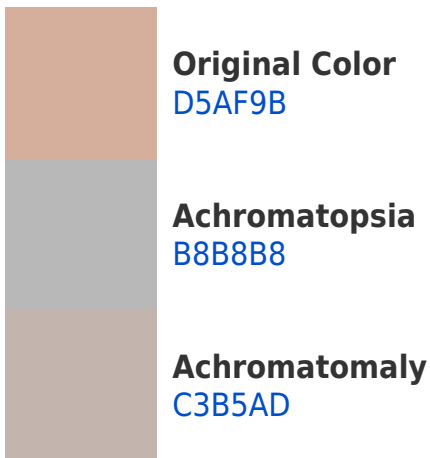


Tritanopia
D8ABB8

Trichromacy



Monochromacy



CSS Examples

Text

The CSS property to change the color of the text to Hex D5AF9B is called "color". The color property can be set on classes, ids or directly on the HTML element.

This example shows how text in the color #D5AF9B looks like.

```
.text, #text, p{  
    color:#D5AF9B  
}
```

If you want to add a text shadow in that color use the text-shadow property, you can generate a text shadow directly with our [CSS Text Shadow Generator](#).

Here you see how black text with a 4 pixel #D5AF9B colored shadow looks like.

```
.shadow{ text-shadow: 4px 4px 2px #D5AF9B
}
```

Border

The CSS property to change the border of an element to Hex D5AF9B is called "border". The border property can be set on classes, ids or directly on the HTML element.

This example shows the color as border, it can be applied via the CSS property "border" or "border-color".

```
.border, #border, table{ border:4px solid
#D5AF9B }
```

If only the border color should be changed use the property `border-color`.

```
.border{ border-color:#D5AF9B }
```

If you want to add a box shadow in that color use:

Here you see how a box with a 4 pixel #D5AF9B colored shadow looks like.

```
.boxshadow{ -moz-box-shadow:4px 4px 4px  
4px #D5AF9B; -webkit-box-shadow:4px 4px  
4px 4px #D5AF9B; box-shadow:4px 4px 4px  
4px #D5AF9B }
```

Background

The CSS property to change the background color of an element to Hex D5AF9B is called "background". The background property can be set on classes, ids or directly on the HTML element.

```
.background, #background, body{  
background:#D5AF9B }
```

If only the background color should be changed can be used:

```
.background{ background-color:#D5AF9B }
```

This example shows the color as background, it is applied via the CSS property "background".

To optimize and compress your CSS code, you can use our [online CSS compressor and optimizer](#) based on csstidy. If you want to create a linear or radial gradient as background or border, check our [CSS Gradient Generator](#).

Hey! You found this booklet interesting? Support Converting Colors with the new Membership Option!

The pro membership hides all ads, plus gives you double the colors in the color bucket, and more awesome pro features!

[Learn more, Memberships starting at \\$2.50/m!](#)

**Follow me
on Twitter!**

@ConvertingColor