

# Converting Colors

Hex(D5B090)

Have a look what the booklet for  
Hex(D5B090) contains.

<b>Hex(D5B090)</b> .....	3
<i><b>Conversions</b></i> .....	4
<i><b>Details</b></i> .....	6
<i><b>Harmonies</b></i> .....	11
<i><b>Previews</b></i> .....	23
<i><b>Color Blindness Simulation</b></i> .....	26
<i><b>CSS Examples</b></i> .....	29

**Color**

**Hex(D5B090)**

# Conversions

## Conversions Part 1

<b>Format</b>	<b>Color</b>
Hex	D5B090
RGB	213, 176, 144
RGB Percent	84%, 69%, 56%
CMY	0.1647, 0.3098, 0.4353
CMYK	0.00, 0.17, 0.32, 0.16
HSL	28°, 45%, 70%
HSV	28°, 32%, 84%
XYZ	47.9999, 47.2104, 32.9682
YIQ	183.4150, 32.3240, -2.1080

# Conversions

## Conversions Part 2

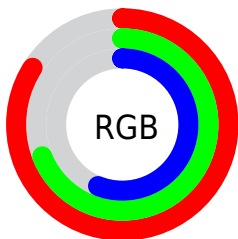
<b>Format</b>	<b>Color</b>
R <sub>Y</sub> B	213, 204, 144
Decimal	14004368
CIE Lab	74.32, 8.84, 21.43
CIE LCh	74, 23.185, 67.576
Yxy	47.2104, 0.3745, 0.3683
Android (android.graphics.Color)	4292194448 (0xFFD5B090)
YUV	183.4150, -19.4316, 25.9460
Hunter-Lab	68.7098, 4.4559, 19.6485

# Details

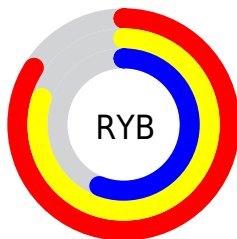
The Hex color **D5B090** is a light color, and the websafe version is hex **CC9966**. A complement of this color would be **90B5D5**, and the grayscale version is **B8B8B8**.

A 20% lighter version of the original color is **FFE8C6**, and **9D7C5D** is the 20% darker color. If you saturate the color by 10%, you get **D5A57B**, and if you desaturate by 10%, it is **D5BBA5**.

# Distribution



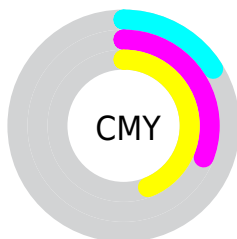
- Red (84%)
- Green (69%)
- Blue (56%)



- Red (84%)
- Yellow (80%)
- Blue (56%)



- Cyan (0%)
- Magenta (17%)
- Yellow (32%)
- Black (16%)



- Cyan (16%)
- Magenta (31%)
- Yellow (44%)

# Brightness & Saturation Gradients

These gradients show how the Hex color D5B090 changes by changing the brightness by 10 percent. The first figure shows a shift by +10% for each color and the second figure -10%.

Similar to the brightness gradients but the following saturation gradients show a change of the Hex color D5B090 by changing the saturation by 10% instead.



 D5B090

 D5B090

FFFFFF

 B99576

 FFE8C6

 9D7C5D

 FFFFE2

 826346

 684B2F

 4F3419

 371F00

 200800

 000000

 D5B090

 D5B090

 D5A57B

 D5BBA5

 D59965

 D5C7BB

 D58E50

 D5D2D0

 D5823B

 D5DEE5

 D57726

 D5E9FB

 D56B10

 D5F5FF

 D56300

 D5FFFF

# Harmonies

## Analogous

The Analogous color harmony consists of three colors that are next to each other on the color wheel.



E1AA9E



D5B090



C1B78D

# Triad

The Triadic color harmony groups three colors that are evenly spaced from another and form a triangle on the color wheel.



D5B090



80C3BC



C1B0D9

# Complementary

The Complementary color scheme is a pair of colors which are on the opposite of each other on the color wheel.



D5B090



90B5D5

# Split Complementary

Split-complementary colors differ from the complementary color scheme. The scheme consists of three colors, the original color and two neighbors of the complement color.



A5B7E1



D5B090



7BC2D0

# Square

The Square scheme is like the rectangle color scheme, but the four colors are evenly spaced on the color wheel.



D5B090



92C2A6



8ABDDE



D7AAC7

# Rectangle

The Rectangle color scheme consists of four colors that form a rectangle on the color wheel.



D5B090



B2BB91



8ABDDE



B8B2DC



# Sweetspot

The Sweet Spot groups the original color and five complimentary colors.



D5B090



FFF1E6



D590B6



807770



000000



808080



# Same Dimension

The Same Dimension uses a secret algorithm to generate beautiful new colors.



D5B090



FFCA9C



D5D290



6B6560



AB4F00



2B1400

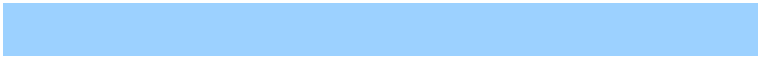


# Inverse Universe

The Inverse Universe completely reimagines the original color for something new.



90B5D5



9CD1FF



9093D5



60666B



005CAB



00172B



# Previews

## White Background



This preview shows how the Hex color D5B090 looks on a white background.

## Color Contrast Check

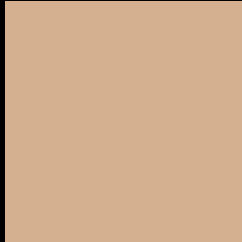
Large Text (above 18pt) WCAG AA × Fail

Any Text WCAG AA × Fail

Large Text (above 18pt) WCAG AAA × Fail

Any Text WCAG AAA × Fail

# Black Background



This preview shows how the Hex color D5B090 looks on a black background.

## Color Contrast Check

Large Text (above 18pt) WCAG AA ✓ Pass

Any Text WCAG AA ✓ Pass

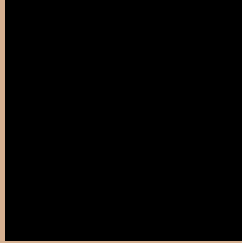
Large Text (above 18pt) WCAG AAA ✓ Pass

Any Text WCAG AAA ✓ Pass

If you want to check with other color combinations, try the [Color Contrast Checker](#).



## Hex D5B090 Background



This preview shows how black text looks on a background with the Hex color D5B090.



This preview shows how white text looks on a background with the Hex color D5B090.

# Color Blindness Simulation

Color vision deficiency is a very complex topic, and I could not describe the different causes any better than Wikipedia does, so if you want to learn more, you should check out their [article about color blindness](#).

## Dichromacy



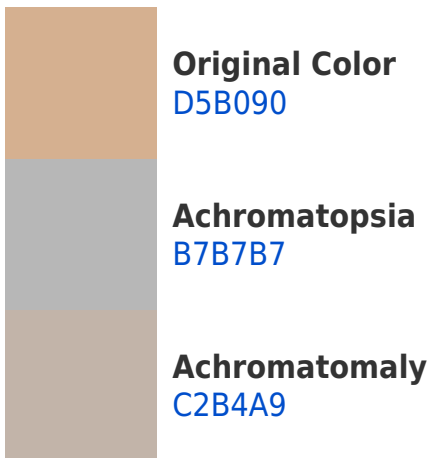


**Tritanopia**  
D9AAB8

# Trichromacy



# Monochromacy



# CSS Examples

## Text

The CSS property to change the color of the text to Hex D5B090 is called "color". The color property can be set on classes, ids or directly on the HTML element.

This example shows how text in the color #D5B090 looks like.

```
.text, #text, p{  
    color:#D5B090  
}
```

If you want to add a text shadow in that color use the text-shadow property, you can generate a text shadow directly with our [CSS Text Shadow Generator](#).

Here you see how black text with a 4 pixel #D5B090 colored shadow looks like.

```
.shadow{ text-shadow: 4px 4px 2px #D5B090
}
```

## Border

The CSS property to change the border of an element to Hex D5B090 is called "border". The border property can be set on classes, ids or directly on the HTML element.

This example shows the color as border, it can be applied via the CSS property "border" or "border-color".

```
.border, #border, table{ border:4px solid
#D5B090 }
```

If only the border color should be changed use the property `border-color`.

```
.border{ border-color:#D5B090 }
```

If you want to add a box shadow in that color use:

Here you see how a box with a 4 pixel #D5B090 colored shadow looks like.

```
.boxshadow{ -moz-box-shadow:4px 4px 4px  
4px #D5B090; -webkit-box-shadow:4px 4px  
4px 4px #D5B090; box-shadow:4px 4px 4px  
4px #D5B090 }
```

# Background

The CSS property to change the background color of an element to Hex D5B090 is called "background". The background property can be set on classes, ids or directly on the HTML element.

```
.background, #background, body{  
background:#D5B090 }
```

If only the background color should be changed can be used:

```
.background{ background-color:#D5B090 }
```

This example shows the color as background, it is applied via the CSS property "background".

To optimize and compress your CSS code, you can use our [online CSS compressor and optimizer](#) based on csstidy. If you want to create a linear or radial gradient as background or border, check our [CSS Gradient Generator](#).



Hey! You found this booklet interesting? Support Converting Colors with the new Membership Option!

The pro membership hides all ads, plus gives you double the colors in the color bucket, and more awesome pro features!

**[Learn more, Memberships starting at \\$2.50/m!](#)**

**Follow me  
on Twitter!**

@ConvertingColor