

# Converting Colors

Hex(D5B0A6)

Have a look what the booklet for  
Hex(D5B0A6) contains.

<b>Hex(D5B0A6)</b> .....	3
<i><b>Conversions</b></i> .....	4
<i><b>Details</b></i> .....	6
<i><b>Harmonies</b></i> .....	11
<i><b>Previews</b></i> .....	23
<i><b>Color Blindness Simulation</b></i> .....	26
<i><b>CSS Examples</b></i> .....	29

# **Color**

**Hex(D5B0A6)**

# Conversions

## Conversions Part 1

Format	Color
Hex	D5B0A6
RGB	213, 176, 166
RGB Percent	84%, 69%, 65%
CMY	0.1647, 0.3098, 0.3490
CMYK	0.00, 0.17, 0.22, 0.16
HSL	13°, 36%, 74%
HSV	13°, 22%, 84%
XYZ	49.8488, 47.9500, 42.7043
YIQ	185.9230, 25.2620, 4.7340

# Conversions

## Conversions Part 2

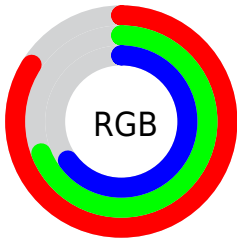
Format	Color
<a href="#">RYB</a>	<a href="#">213, 179, 166</a>
Decimal	<a href="#">14004390</a>
CIELab	<a href="#">74.79, 11.87, 10.14</a>
CIElCh	<a href="#">75, 15.613, 40.515</a>
Yxy	<a href="#">47.9500, 0.3548, 0.3413</a>
Android (android.graphics.Color)	<a href="#">4292194470 (0xFFD5B0A6)</a>
YUV	<a href="#">185.9230, -9.8220, 23.7465</a>
Hunter-Lab	<a href="#">69.2459, 7.3184, 11.9077</a>

# Details

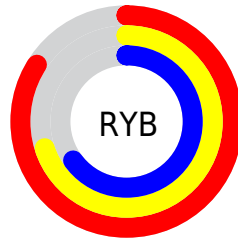
The Hex color **D5B0A6** is a light color, and the websafe version is hex **CC9999**. A complement of this color would be **A6CBD5**, and the grayscale version is **BABABA**.

A 20% lighter version of the original color is **FFE8DD**, and **9E7B72** is the 20% darker color. If you saturate the color by 10%, you get **D59F91**, and if you desaturate by 10%, it is **D5C1BB**.

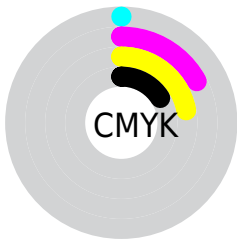
# Distribution



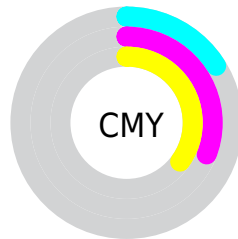
- Red (84%)
- Green (69%)
- Blue (65%)



- Red (84%)
- Yellow (70%)
- Blue (65%)



- Cyan (0%)
- Magenta (17%)
- Yellow (22%)
- Black (16%)



- Cyan (16%)
- Magenta (31%)
- Yellow (35%)

# Brightness & Saturation Gradients

These gradients show how the Hex color D5B0A6 changes by changing the brightness by 10 percent. The first figure shows a shift by +10% for each color and the second figure -10%.

Similar to the brightness gradients but the following saturation gradients show a change of the Hex color D5B0A6 by changing the saturation by 10% instead.



 D5B0A6

 D5B0A6

FFFFFF

 B9958C

 FFE8DD

 9E7B72

 FFFFFA

 83625A

 694B42

 51342C

 391E18

 240700

 000000

 D5B0A6

 D5B0A6

 D59F91

 D5C1BB

 D58E7B

 D5D2D1

 D57E66

 D5E2E6

 D56D51

 D5F3FB

 D55C3C

 D5FFFF

 D54B26

 D53B11

 D52D00

# Harmonies

## Analogous

The Analogous color harmony consists of three colors that are next to each other on the color wheel.



D6AEB3



D5B0A6



CCB49D

# Triad

The Triadic color harmony groups three colors that are evenly spaced from another and form a triangle on the color wheel.



D5B0A6



9EC0AE



AFB8D4

# Complementary

The Complementary color scheme is a pair of colors which are on the opposite of each other on the color wheel.



D5B0A6



A6CBD5

# Split Complementary

Split-complementary colors differ from the complementary color scheme. The scheme consists of three colors, the original color and two neighbors of the complement color.



9EBCD3



D5B0A6



94C1BD

# Square

The Square scheme is like the rectangle color scheme, but the four colors are evenly spaced on the color wheel.



D5B0A6



AEFDA2



94BFCA



C1B3CE

# Rectangle

The Rectangle color scheme consists of four colors that form a rectangle on the color wheel.



D5B0A6



C3B79C



94BFCA



A9B9D4

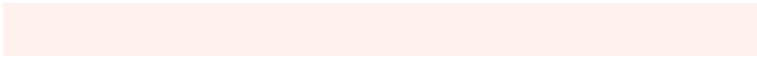


# Sweetspot

The Sweet Spot groups the original color and five complimentary colors.



D5B0A6



FFF1ED



D5A6CC



807775



000000



808080



# Same Dimension

The Same Dimension uses a secret algorithm to generate beautiful new colors.



D5B0A6



FFCBBD



D5C7A6



6B6360



AB2400



2B0900

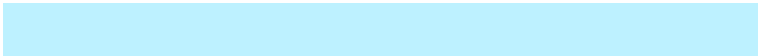


# Inverse Universe

The Inverse Universe completely reimagines the original color for something new.



A6CBD5



BDF1FF



A6B4D5



60696B



0086AB

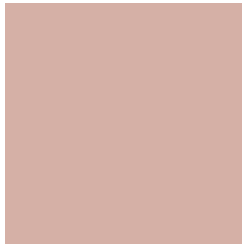


00222B



# Previews

## White Background



This preview shows how the Hex color D5B0A6 looks on a white background.

## Color Contrast Check

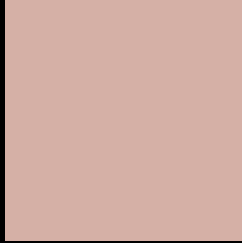
Large Text (above 18pt) WCAG AA × Fail

Any Text WCAG AA × Fail

Large Text (above 18pt) WCAG AAA × Fail

Any Text WCAG AAA × Fail

# Black Background



This preview shows how the Hex color D5B0A6 looks on a black background.

## Color Contrast Check

Large Text (above 18pt) WCAG AA ✓ Pass

Any Text WCAG AA ✓ Pass

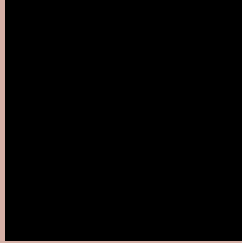
Large Text (above 18pt) WCAG AAA ✓ Pass

Any Text WCAG AAA ✓ Pass

If you want to check with other color combinations, try the [Color Contrast Checker](#).



## Hex D5B0A6 Background



This preview shows how black text looks on a background with the Hex color D5B0A6.



This preview shows how white text looks on a background with the Hex color D5B0A6.

# Color Blindness Simulation

Color vision deficiency is a very complex topic, and I could not describe the different causes any better than Wikipedia does, so if you want to learn more, you should check out their [article about color blindness](#).

## Dichromacy



**Original Color**  
D5B0A6

**Protanopia**  
BFB8AA

**Deuteranopia**  
D1B2A6



# Trichromacy



**Original Color**  
D5B0A6

**Protanomaly**  
C7B5A9

**Deuteranomaly**  
D2B1A6

**Tritanomaly**  
D6AEB3

# Monochromacy



**Original Color**  
D5B0A6

**Achromatopsia**  
BABABA

**Achromatomaly**  
C4B6B3

# CSS Examples

## Text

The CSS property to change the color of the text to Hex D5B0A6 is called "color". The color property can be set on classes, ids or directly on the HTML element.

This example shows how text in the color #D5B0A6 looks like.

```
.text, #text, p{  
    color:#D5B0A6  
}
```

If you want to add a text shadow in that color use the text-shadow property, you can generate a text shadow directly with our [CSS Text Shadow Generator](#).

Here you see how black text with a 4 pixel #D5B0A6 colored shadow looks like.

```
.shadow{ text-shadow: 4px 4px 2px #D5B0A6
}
```

## Border

The CSS property to change the border of an element to Hex D5B0A6 is called "border". The border property can be set on classes, ids or directly on the HTML element.

This example shows the color as border, it can be applied via the CSS property "border" or "border-color".

```
.border, #border, table{ border:4px solid
#D5B0A6 }
```

If only the border color should be changed use the property `border-color`.

```
.border{ border-color:#D5B0A6 }
```

If you want to add a box shadow in that color use:

Here you see how a box with a 4 pixel #D5B0A6 colored shadow looks like.

```
.boxshadow{ -moz-box-shadow:4px 4px 4px  
4px #D5B0A6; -webkit-box-shadow:4px 4px  
4px 4px #D5B0A6; box-shadow:4px 4px 4px  
4px #D5B0A6 }
```

# Background

The CSS property to change the background color of an element to Hex D5B0A6 is called "background". The background property can be set on classes, ids or directly on the HTML element.

```
.background, #background, body{  
background:#D5B0A6 }
```

If only the background color should be changed can be used:

```
.background{ background-color:#D5B0A6 }
```

This example shows the color as background, it is applied via the CSS property "background".

To optimize and compress your CSS code, you can use our [online CSS compressor and optimizer](#) based on csstidy. If you want to create a linear or radial gradient as background or border, check our [CSS Gradient Generator](#).



Hey! You found this booklet interesting? Support Converting Colors with the new Membership Option!

The pro membership hides all ads, plus gives you double the colors in the color bucket, and more awesome pro features!

**[Learn more, Memberships starting at \\$2.50/m!](#)**

**Follow me  
on Twitter!**

@ConvertingColor