

# Converting Colors

Hex(D5B299)

Have a look what the booklet for  
Hex(D5B299) contains.

<b>Hex(D5B299)</b> .....	3
<b><i>Conversions</i></b> .....	4
<b><i>Details</i></b> .....	6
<b><i>Harmonies</i></b> .....	11
<b><i>Previews</i></b> .....	23
<b><i>Color Blindness Simulation</i></b> .....	26
<b><i>CSS Examples</i></b> .....	29

# **Color**

**Hex(D5B299)**

# Conversions

## Conversions Part 1

<b>Format</b>	<b>Color</b>
Hex	D5B299
RGB	213, 178, 153
RGB Percent	84%, 70%, 60%
CMY	0.1647, 0.3020, 0.4000
CMYK	0.00, 0.16, 0.28, 0.16
HSL	25°, 42%, 72%
HSV	25°, 28%, 84%
XYZ	49.1107, 48.2868, 36.8689
YIQ	185.6150, 28.8850, -0.3550

# Conversions

## Conversions Part 2

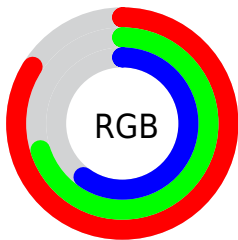
Format	Color
R <sub>Y</sub> B	213, 196, 153
Decimal	14004889
CIE Lab	75.01, 8.96, 17.51
CIE LCh	75, 19.663, 62.908
Yxy	48.2868, 0.3658, 0.3596
Android (android.graphics.Color)	4292194969 (0xFFD5B299)
YUV	185.6150, -16.0792, 24.0166
Hunter-Lab	69.4887, 4.5485, 17.1844

# Details

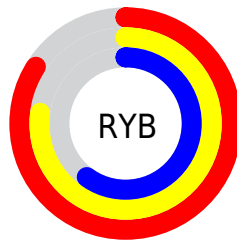
The Hex color **D5B299** is a light color, and the websafe version is hex **CC9999**. A complement of this color would be **99BCD5**, and the grayscale version is **BABABA**.

A 20% lighter version of the original color is **FFEACF**, and **9D7D66** is the 20% darker color. If you saturate the color by 10%, you get **D5A684**, and if you desaturate by 10%, it is **D5BEAE**.

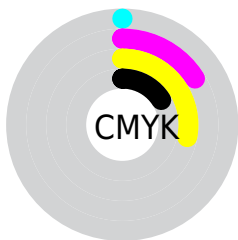
# Distribution



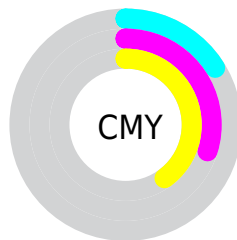
- Red (84%)
- Green (70%)
- Blue (60%)



- Red (84%)
- Yellow (77%)
- Blue (60%)



- Cyan (0%)
- Magenta (16%)
- Yellow (28%)
- Black (16%)



- Cyan (16%)
- Magenta (30%)
- Yellow (40%)

# Brightness & Saturation Gradients

These gradients show how the Hex color D5B299 changes by changing the brightness by 10 percent. The first figure shows a shift by +10% for each color and the second figure -10%.

Similar to the brightness gradients but the following saturation gradients show a change of the Hex color D5B299 by changing the saturation by 10% instead.



 D5B299

 D5B299

FFFFFF

 B9977F

 FFEACF

 9D7D66

 FFFFEC

 83644E

 694C37

 503621

 38200C

 220A00

 000000

 D5B299

 D5B299

 D5A684

 D5BEAE

 D5996E

 D5CBC4

 D58D59

 D5D7D9

 D58044

 D5E4EE

 D5742F

 D5F0FF

 D56719

 D5FDFE

 D55B04

 D5FFFF

 D55900

# Harmonies

## Analogous

The Analogous color harmony consists of three colors that are next to each other on the color wheel.



DEADA6



D5B299



C5B895

# Triad

The Triadic color harmony groups three colors that are evenly spaced from another and form a triangle on the color wheel.



D5B299



8DC3BA



BEB3D7

# Complementary

The Complementary color scheme is a pair of colors which are on the opposite of each other on the color wheel.



D5B299



99BCD5

# Split Complementary

Split-complementary colors differ from the complementary color scheme. The scheme consists of three colors, the original color and two neighbors of the complement color.



A6BADC



D5B299



88C2CC

# Square

The Square scheme is like the rectangle color scheme, but the four colors are evenly spaced on the color wheel.



D5B299



9DC1A8



92BFD8



D2AEC9

# Rectangle

The Rectangle color scheme consists of four colors that form a rectangle on the color wheel.



D5B299



B8BC97



92BFD8



B6B5DA

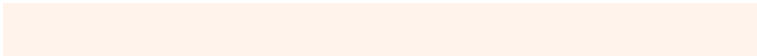


# Sweetspot

The Sweet Spot groups the original color and five complimentary colors.



D5B299



FFF3EB



D599BC



807873



000000



808080



# Same Dimension

The Same Dimension uses a secret algorithm to generate beautiful new colors.



D5B299



FFCCA8



D5CF99



6B6560



AB4700



2B1200

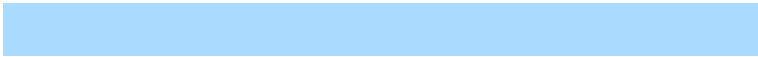


# Inverse Universe

The Inverse Universe completely reimagines the original color for something new.



99BCD5



A8DBFF



999ED5



60676B



0064AB



00192B



# Previews

## White Background



This preview shows how the Hex color D5B299 looks on a white background.

## Color Contrast Check

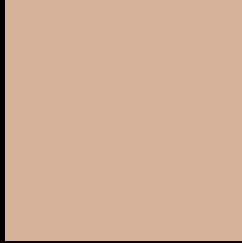
Large Text (above 18pt) WCAG AA × Fail

Any Text WCAG AA × Fail

Large Text (above 18pt) WCAG AAA × Fail

Any Text WCAG AAA × Fail

# Black Background



This preview shows how the Hex color D5B299 looks on a black background.

## Color Contrast Check

Large Text (above 18pt) WCAG AA ✓ Pass

Any Text WCAG AA ✓ Pass

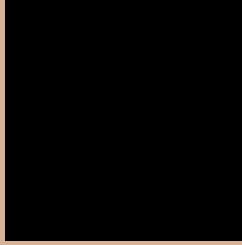
Large Text (above 18pt) WCAG AAA ✓ Pass

Any Text WCAG AAA ✓ Pass

If you want to check with other color combinations, try the [Color Contrast Checker](#).



## Hex D5B299 Background



This preview shows how black text looks on a background with the Hex color D5B299.



This preview shows how white text looks on a background with the Hex color D5B299.

# Color Blindness Simulation

Color vision deficiency is a very complex topic, and I could not describe the different causes any better than Wikipedia does, so if you want to learn more, you should check out their [article about color blindness](#).

## Dichromacy



**Original Color**  
D5B299

**Protanopia**  
C3B89C

**Deuteranopia**  
D6B299



**Tritanopia**  
D9ADBB

# Trichromacy



# Monochromacy



# CSS Examples

## Text

The CSS property to change the color of the text to Hex D5B299 is called "color". The color property can be set on classes, ids or directly on the HTML element.

This example shows how text in the color #D5B299 looks like.

```
.text, #text, p{  
    color:#D5B299  
}
```

If you want to add a text shadow in that color use the text-shadow property, you can generate a text shadow directly with our [CSS Text Shadow Generator](#).

Here you see how black text with a 4 pixel #D5B299 colored shadow looks like.

```
.shadow{ text-shadow: 4px 4px 2px #D5B299  
}
```

## Border

The CSS property to change the border of an element to Hex D5B299 is called "border". The border property can be set on classes, ids or directly on the HTML element.

This example shows the color as border, it can be applied via the CSS property "border" or "border-color".

```
.border, #border, table{ border:4px solid  
#D5B299 }
```

If only the border color should be changed use the property `border-color`.

```
.border{ border-color:#D5B299 }
```

If you want to add a box shadow in that color use:

Here you see how a box with a 4 pixel #D5B299 colored shadow looks like.

```
.boxshadow{ -moz-box-shadow:4px 4px 4px  
4px #D5B299; -webkit-box-shadow:4px 4px  
4px 4px #D5B299; box-shadow:4px 4px 4px  
4px #D5B299 }
```

# Background

The CSS property to change the background color of an element to Hex D5B299 is called "background". The background property can be set on classes, ids or directly on the HTML element.

```
.background, #background, body{  
background:#D5B299 }
```

If only the background color should be changed can be used:

```
.background{ background-color:#D5B299 }
```

This example shows the color as background, it is applied via the CSS property "background".

To optimize and compress your CSS code, you can use our [online CSS compressor and optimizer](#) based on csstidy. If you want to create a linear or radial gradient as background or border, check our [CSS Gradient Generator](#).



Hey! You found this booklet interesting? Support Converting Colors with the new Membership Option!

The pro membership hides all ads, plus gives you double the colors in the color bucket, and more awesome pro features!

**[Learn more, Memberships starting at \\$2.50/m!](#)**

**Follow me  
on Twitter!**

@ConvertingColor