

# Converting Colors

Hex(D5B397)

Have a look what the booklet for  
Hex(D5B397) contains.

<b>Hex(D5B397)</b> .....	3
<b><i>Conversions</i></b> .....	4
<b><i>Details</i></b> .....	6
<b><i>Harmonies</i></b> .....	11
<b><i>Previews</i></b> .....	23
<b><i>Color Blindness Simulation</i></b> .....	26
<b><i>CSS Examples</i></b> .....	29

**Color**

**Hex(D5B397)**

# Conversions

## Conversions Part 1

<b>Format</b>	<b>Color</b>
Hex	D5B397
RGB	213, 179, 151
RGB Percent	84%, 70%, 59%
CMY	0.1647, 0.2980, 0.4078
CMYK	0.00, 0.16, 0.29, 0.16
HSL	27°, 42%, 71%
HSV	27°, 29%, 84%
XYZ	49.1466, 48.6207, 36.0726
YIQ	185.9740, 29.2520, -1.5000

# Conversions

## Conversions Part 2

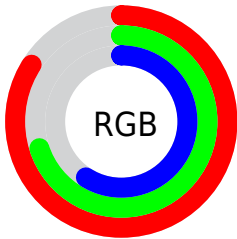
<b>Format</b>	<b>Color</b>
<b>R<sub>YB</sub></b>	213, 202, 151
Decimal	14005143
CIE <sub>Lab</sub>	75.21, 8.15, 18.88
CIE <sub>LCh</sub>	75, 20.562, 66.647
Yxy	48.6207, 0.3672, 0.3633
Android (android.graphics.Color)	4292195223 (0xFFD5B397)
YUV	185.9740, -17.2422, 23.7018
Hunter-Lab	69.7285, 3.7867, 18.1376

# Details

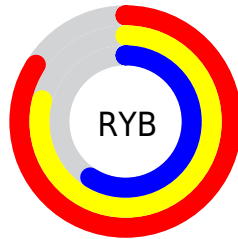
The Hex color **D5B397** is a light color, and the websafe version is hex **FFCC99**. A complement of this color would be **97B9D5**, and the grayscale version is **BABABA**.

A 20% lighter version of the original color is **FFEBCD**, and **9D7E64** is the 20% darker color. If you saturate the color by 10%, you get **D5A782**, and if you desaturate by 10%, it is **D5BFAC**.

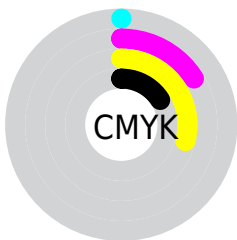
# Distribution



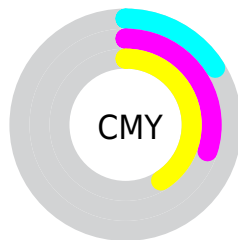
- Red (84%)
- Green (70%)
- Blue (59%)



- Red (84%)
- Yellow (79%)
- Blue (59%)



- Cyan (0%)
- Magenta (16%)
- Yellow (29%)
- Black (16%)



- Cyan (16%)
- Magenta (30%)
- Yellow (41%)

# Brightness & Saturation Gradients

These gradients show how the Hex color D5B397 changes by changing the brightness by 10 percent. The first figure shows a shift by +10% for each color and the second figure -10%.

Similar to the brightness gradients but the following saturation gradients show a change of the Hex color D5B397 by changing the saturation by 10% instead.



 D5B397

 D5B397

FFFFFF

 B9987D

 FFEBCD

 9D7E64

 FFFFEA

 83654C

 694D35

 50371F

 382109

 210C00

 000000

 D5B397

 D5B397

 D5A782

 D5BFAC

 D59C6C

 D5CAC2

 D59057

 D5D6D7

 D58442

 D5E2EC

 D5792D

 D5EDFF

 D56D17

 D5F9FF

 D56102

 D5FFFF

 D56000

# Harmonies

## Analogous

The Analogous color harmony consists of three colors that are next to each other on the color wheel.



DFAEA3



D5B397



C4B994

# Triad

The Triadic color harmony groups three colors that are evenly spaced from another and form a triangle on the color wheel.



D5B397



8AC4BD



C2B3D8

# Complementary

The Complementary color scheme is a pair of colors which are on the opposite of each other on the color wheel.



D5B397



97B9D5

# Split Complementary

Split-complementary colors differ from the complementary color scheme. The scheme consists of three colors, the original color and two neighbors of the complement color.



A9B9DE



D5B397



86C3CF

# Square

The Square scheme is like the rectangle color scheme, but the four colors are evenly spaced on the color wheel.



D5B397



99C3AA



92BFDB



D6AEC9

# Rectangle

The Rectangle color scheme consists of four colors that form a rectangle on the color wheel.



D5B397



B6BD97



92BFDB



BAB5DB

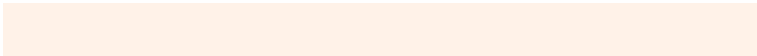


# Sweetspot

The Sweet Spot groups the original color and five complimentary colors.



D5B397



FFF2E8



D597B9



807871



000000



808080



# Same Dimension

The Same Dimension uses a secret algorithm to generate beautiful new colors.



D5B397



FFCEA6



D5D297



6B6560



AB4D00



2B1400

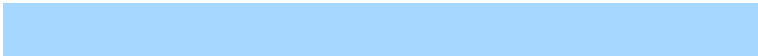


# Inverse Universe

The Inverse Universe completely reimagines the original color for something new.



97B9D5



A6D7FF



979AD5



60666B



005EAB

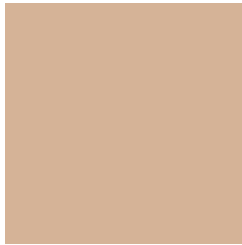


00182B



# Previews

## White Background



This preview shows how the Hex color D5B397 looks on a white background.

## Color Contrast Check

Large Text (above 18pt) WCAG AA × Fail

Any Text WCAG AA × Fail

Large Text (above 18pt) WCAG AAA × Fail

Any Text WCAG AAA × Fail

# Black Background



This preview shows how the Hex color D5B397 looks on a black background.

## Color Contrast Check

Large Text (above 18pt) WCAG AA ✓ Pass

Any Text WCAG AA ✓ Pass

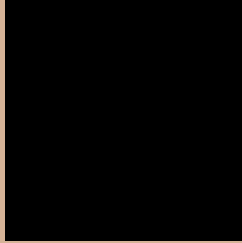
Large Text (above 18pt) WCAG AAA ✓ Pass

Any Text WCAG AAA ✓ Pass

If you want to check with other color combinations, try the [Color Contrast Checker](#).



## Hex D5B397 Background



This preview shows how black text looks on a background with the Hex color D5B397.



This preview shows how white text looks on a background with the Hex color D5B397.

# Color Blindness Simulation

Color vision deficiency is a very complex topic, and I could not describe the different causes any better than Wikipedia does, so if you want to learn more, you should check out their [article about color blindness](#).

## Dichromacy



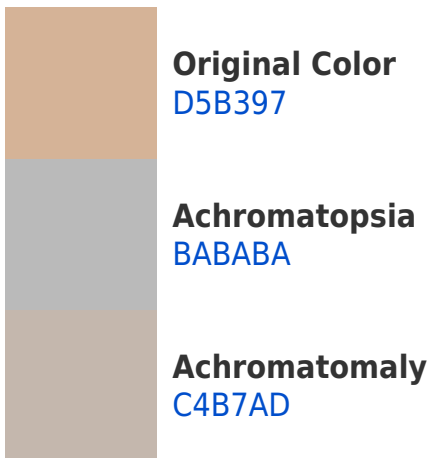


**Tritanopia**  
D9AEBB

# Trichromacy



# Monochromacy



# CSS Examples

## Text

The CSS property to change the color of the text to Hex D5B397 is called "color". The color property can be set on classes, ids or directly on the HTML element.

This example shows how text in the color #D5B397 looks like.

```
.text, #text, p{  
    color:#D5B397  
}
```

If you want to add a text shadow in that color use the text-shadow property, you can generate a text shadow directly with our [CSS Text Shadow Generator](#).

Here you see how black text with a 4 pixel #D5B397 colored shadow looks like.

```
.shadow{ text-shadow: 4px 4px 2px #D5B397
}
```

## Border

The CSS property to change the border of an element to Hex D5B397 is called "border". The border property can be set on classes, ids or directly on the HTML element.

This example shows the color as border, it can be applied via the CSS property "border" or "border-color".

```
.border, #border, table{ border:4px solid
#D5B397 }
```

If only the border color should be changed use the property `border-color`.

```
.border{ border-color:#D5B397 }
```

If you want to add a box shadow in that color use:

Here you see how a box with a 4 pixel #D5B397 colored shadow looks like.

```
.boxshadow{ -moz-box-shadow:4px 4px 4px  
4px #D5B397; -webkit-box-shadow:4px 4px  
4px 4px #D5B397; box-shadow:4px 4px 4px  
4px #D5B397 }
```

# Background

The CSS property to change the background color of an element to Hex D5B397 is called "background". The background property can be set on classes, ids or directly on the HTML element.

```
.background, #background, body{  
background:#D5B397 }
```

If only the background color should be changed can be used:

```
.background{ background-color:#D5B397 }
```

This example shows the color as background, it is applied via the CSS property "background".

To optimize and compress your CSS code, you can use our [online CSS compressor and optimizer](#) based on csstidy. If you want to create a linear or radial gradient as background or border, check our [CSS Gradient Generator](#).



Hey! You found this booklet interesting? Support Converting Colors with the new Membership Option!

The pro membership hides all ads, plus gives you double the colors in the color bucket, and more awesome pro features!

**[Learn more, Memberships starting at \\$2.50/m!](#)**

**Follow me  
on Twitter!**

@ConvertingColor