

Converting Colors

Hex(D5B399)

Have a look what the booklet for
Hex(D5B399) contains.

| | |
|--|----|
| Hex(D5B399) | 3 |
| <i>Conversions</i> | 4 |
| <i>Details</i> | 6 |
| <i>Harmonies</i> | 11 |
| <i>Previews</i> | 23 |
| <i>Color Blindness Simulation</i> | 26 |
| <i>CSS Examples</i> | 29 |

Color

Hex(D5B399)

Conversions

Conversions Part 1

| Format | Color |
|---------------|----------------------------|
| Hex | D5B399 |
| RGB | 213, 179, 153 |
| RGB Percent | 84%, 70%, 60% |
| CMY | 0.1647, 0.2980, 0.4000 |
| CMYK | 0.00, 0.16, 0.28, 0.16 |
| HSL | 26°, 42%, 72% |
| HSV | 26°, 28%, 84% |
| XYZ | 49.3104, 48.6862, 36.9354 |
| YIQ | 186.2020, 28.6100, -0.8780 |

Conversions

Conversions Part 2

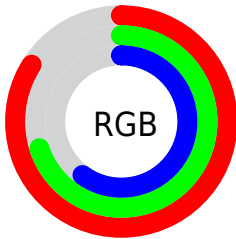
| Format | Color |
|-------------------------------------|--------------------------------|
| R _Y B | 213, 199, 153 |
| Decimal | 14005145 |
| CIE Lab | 75.26, 8.42, 17.85 |
| CIE LCh | 75, 19.739, 64.752 |
| Yxy | 48.6862, 0.3654, 0.3608 |
| Android (android.graphics.Color) | 4292195225 (0xFFD5B399) |
| YUV | 186.2020, -16.3686, 23.5018 |
| Hunter-Lab | 69.7755, 4.0390, 17.4579 |

Details

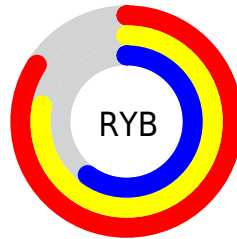
The Hex color **D5B399** is a light color, and the websafe version is hex **CC9999**. A complement of this color would be **99BBD5**, and the grayscale version is **BABABA**.

A 20% lighter version of the original color is **FFEBCF**, and **9D7E66** is the 20% darker color. If you saturate the color by 10%, you get **D5A784**, and if you desaturate by 10%, it is **D5BFAE**.

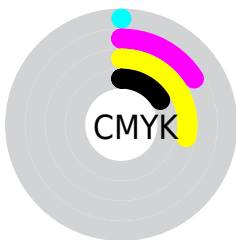
Distribution



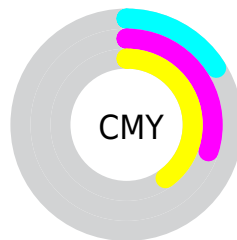
- Red (84%)
- Green (70%)
- Blue (60%)



- Red (84%)
- Yellow (78%)
- Blue (60%)



- Cyan (0%)
- Magenta (16%)
- Yellow (28%)
- Black (16%)



- Cyan (16%)
- Magenta (30%)
- Yellow (40%)

Brightness & Saturation Gradients

These gradients show how the Hex color D5B399 changes by changing the brightness by 10 percent. The first figure shows a shift by +10% for each color and the second figure -10%.

Similar to the brightness gradients but the following saturation gradients show a change of the Hex color D5B399 by changing the saturation by 10% instead.

 D5B399

 D5B399

FFFFFF

 B9987F

 FFEBCF

 9D7E66

 FFFFEC

 83654E

 694D37

 503721

 38210B

 220C00

 000000

 D5B399

 D5B399

 D5A784

 D5BFAE

 D59B6E

 D5CBC4

 D58F59

 D5D7D9

 D58344

 D5E3EE

 D5772F

 D5EFFF

 D56B19

 D5FBFF

 D55F04

 D5FFFF

 D55C00

Harmonies

Analogous

The Analogous color harmony consists of three colors that are next to each other on the color wheel.



DEAEA5



D5B399



C5B995

Triad

The Triadic color harmony groups three colors that are evenly spaced from another and form a triangle on the color wheel.



D5B399



8DC4BC



C0B4D7

Complementary

The Complementary color scheme is a pair of colors which are on the opposite of each other on the color wheel.



D5B399



99BBD5

Split Complementary

Split-complementary colors differ from the complementary color scheme. The scheme consists of three colors, the original color and two neighbors of the complement color.



A8BADD



D5B399



88C3CD

Square

The Square scheme is like the rectangle color scheme, but the four colors are evenly spaced on the color wheel.



D5B399



9CC2A9



93BFDA



D4AFC9

Rectangle

The Rectangle color scheme consists of four colors that form a rectangle on the color wheel.



D5B399



B7BD98



93BFDA



B9B6DA

Sweetspot

The Sweet Spot groups the original color and five complimentary colors.



D5B399



FFF3EB



D599BB



807873



000000



808080

Same Dimension

The Same Dimension uses a secret algorithm to generate beautiful new colors.



D5B399



FFCEA8



D5D099



6B6560



AB4A00



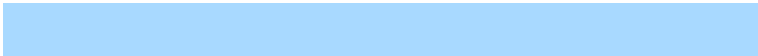
2B1300

Inverse Universe

The Inverse Universe completely reimagines the original color for something new.



99BBD5



A8D9FF



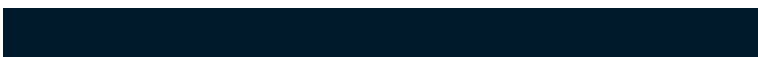
999DD5



60666B



0061AB



00192B

Previews

White Background



This preview shows how the Hex color D5B399 looks on a white background.

Color Contrast Check

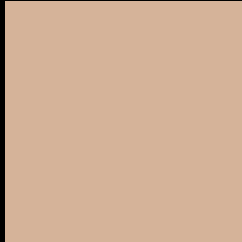
Large Text (above 18pt) WCAG AA × Fail

Any Text WCAG AA × Fail

Large Text (above 18pt) WCAG AAA × Fail

Any Text WCAG AAA × Fail

Black Background



This preview shows how the Hex color D5B399 looks on a black background.

Color Contrast Check

Large Text (above 18pt) WCAG AA ✓ Pass

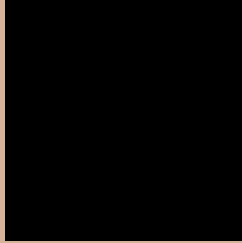
Any Text WCAG AA ✓ Pass

Large Text (above 18pt) WCAG AAA ✓ Pass

Any Text WCAG AAA ✓ Pass

If you want to check with other color combinations, try the [Color Contrast Checker](#).

Hex D5B399 Background



This preview shows how black text looks on a background with the Hex color D5B399.



This preview shows how white text looks on a background with the Hex color D5B399.

Color Blindness Simulation

Color vision deficiency is a very complex topic, and I could not describe the different causes any better than Wikipedia does, so if you want to learn more, you should check out their [article about color blindness](#).

Dichromacy





Tritanopia
D9AEBC

Trichromacy



Original Color
D5B399

Protanomaly
CAB79B

Deuteranomaly
D6B299

Tritanomaly
D8B0AF

Monochromacy



Original Color
D5B399

Achromatopsia
BABABA

Achromatomaly
C4B7AE

CSS Examples

Text

The CSS property to change the color of the text to Hex D5B399 is called "color". The color property can be set on classes, ids or directly on the HTML element.

This example shows how text in the color #D5B399 looks like.

```
.text, #text, p{  
    color:#D5B399  
}
```

If you want to add a text shadow in that color use the text-shadow property, you can generate a text shadow directly with our [CSS Text Shadow Generator](#).

Here you see how black text with a 4 pixel #D5B399 colored shadow looks like.

```
.shadow{ text-shadow: 4px 4px 2px #D5B399
}
```

Border

The CSS property to change the border of an element to Hex D5B399 is called "border". The border property can be set on classes, ids or directly on the HTML element.

This example shows the color as border, it can be applied via the CSS property "border" or "border-color".

```
.border, #border, table{ border:4px solid
#D5B399 }
```

If only the border color should be changed use the property `border-color`.

```
.border{ border-color:#D5B399 }
```

If you want to add a box shadow in that color use:

Here you see how a box with a 4 pixel #D5B399 colored shadow looks like.

```
.boxshadow{ -moz-box-shadow:4px 4px 4px  
4px #D5B399; -webkit-box-shadow:4px 4px  
4px 4px #D5B399; box-shadow:4px 4px 4px  
4px #D5B399 }
```

Background

The CSS property to change the background color of an element to Hex D5B399 is called "background". The background property can be set on classes, ids or directly on the HTML element.

```
.background, #background, body{  
background:#D5B399 }
```

If only the background color should be changed can be used:

```
.background{ background-color:#D5B399 }
```

This example shows the color as background, it is applied via the CSS property "background".

To optimize and compress your CSS code, you can use our [online CSS compressor and optimizer](#) based on csstidy. If you want to create a linear or radial gradient as background or border, check our [CSS Gradient Generator](#).

Hey! You found this booklet interesting? Support Converting Colors with the new Membership Option!

The pro membership hides all ads, plus gives you double the colors in the color bucket, and more awesome pro features!

[Learn more, Memberships starting at \\$2.50/m!](#)

**Follow me
on Twitter!**

@ConvertingColor