

Converting Colors

Hex(D5B3B1)

Have a look what the booklet for
Hex(D5B3B1) contains.

Hex(D5B3B1)	3
<i>Conversions</i>	4
<i>Details</i>	6
<i>Harmonies</i>	11
<i>Previews</i>	23
<i>Color Blindness Simulation</i>	26
<i>CSS Examples</i>	29

Color

Hex(D5B3B1)

Conversions

Conversions Part 1

Format	Color
Hex	D5B3B1
RGB	213, 179, 177
RGB Percent	84%, 70%, 69%
CMY	0.1647, 0.2980, 0.3059
CMYK	0.00, 0.16, 0.17, 0.16
HSL	3°, 30%, 76%
HSV	3°, 17%, 84%
XYZ	51.4965, 49.5607, 48.4470
YIQ	188.9380, 20.9060, 6.5860

Conversions

Conversions Part 2

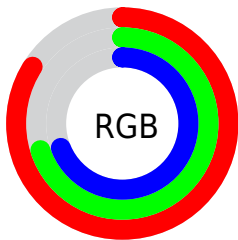
Format	Color
R _Y B	213, 179, 177
Decimal	14005169
CIE Lab	75.80, 11.93, 5.59
CIE LCh	76, 13.174, 25.098
Yxy	49.5607, 0.3444, 0.3315
Android (android.graphics.Color)	4292195249 (0xFFD5B3B1)
YUV	188.9380, -5.8854, 21.1024
Hunter-Lab	70.3993, 7.3723, 8.4777

Details

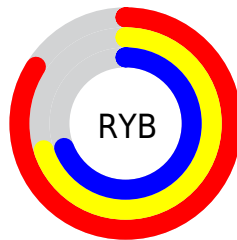
The Hex color **D5B3B1** is a light color, and the websafe version is hex **CC9999**. A complement of this color would be **B1D3D5**, and the grayscale version is **BDBDBD**.

A 20% lighter version of the original color is **FFEBE9**, and **9E7E7C** is the 20% darker color. If you saturate the color by 10%, you get **D59F9C**, and if you desaturate by 10%, it is **D5C7C6**.

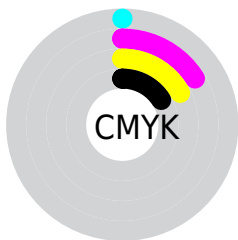
Distribution



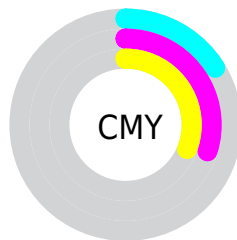
- Red (84%)
- Green (70%)
- Blue (69%)



- Red (84%)
- Yellow (70%)
- Blue (69%)



- Cyan (0%)
- Magenta (16%)
- Yellow (17%)
- Black (16%)



- Cyan (16%)
- Magenta (30%)
- Yellow (31%)

Brightness & Saturation Gradients

These gradients show how the Hex color D5B3B1 changes by changing the brightness by 10 percent. The first figure shows a shift by +10% for each color and the second figure -10%.

Similar to the brightness gradients but the following saturation gradients show a change of the Hex color D5B3B1 by changing the saturation by 10% instead.

 D5B3B1

 D5B3B1

FFFFFF


 B99896

 FFEBE9

 9E7E7C

 846564

 6A4D4C

 513635

 3A2120

 240B08

 000000

 D5B3B1

 D5B3B1

 D59F9C

 D5C7C6

 D58B86

 D5DBDC

 D57771

 D5EFF1

 D5635C

 D5FFFF

 D54E47

 D53A31

 D5261C

 D51207

 D50C00

Harmonies

Analogous

The Analogous color harmony consists of three colors that are next to each other on the color wheel.



D2B3BD



D5B3B1



D1B5A7

Triad

The Triadic color harmony groups three colors that are evenly spaced from another and form a triangle on the color wheel.



D5B3B1



ACC0AD



ACBCD3

Complementary

The Complementary color scheme is a pair of colors which are on the opposite of each other on the color wheel.



D5B3B1



B1D3D5

Split Complementary

Split-complementary colors differ from the complementary color scheme. The scheme consists of three colors, the original color and two neighbors of the complement color.



A0C0CE



D5B3B1



A1C2B8

Square

The Square scheme is like the rectangle color scheme, but the four colors are evenly spaced on the color wheel.



D5B3B1



BABDA5



9CC2C5



BBB8D1

Rectangle

The Rectangle color scheme consists of four colors that form a rectangle on the color wheel.



D5B3B1



CBB8A4



9CC2C5



A7BED2

Sweetspot

The Sweet Spot groups the original color and five complimentary colors.



D5B3B1



FFF3F2



D5B1D3



807878



000000



808080

Same Dimension

The Same Dimension uses a secret algorithm to generate beautiful new colors.



D5B3B1



FFCFCC



D5C5B1



6B6160



AB0900



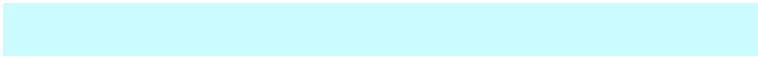
2B0200

Inverse Universe

The Inverse Universe completely reimagines the original color for something new.



B1D3D5



CCFCFF



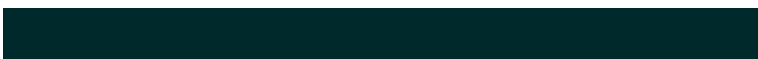
B1C1D5



606B6B



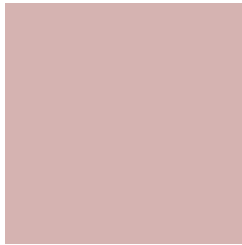
00A1AB



00292B

Previews

White Background



This preview shows how the Hex color D5B3B1 looks on a white background.

Color Contrast Check

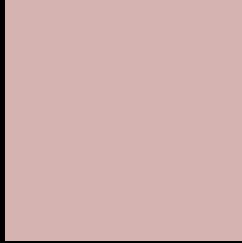
Large Text (above 18pt) WCAG AA × Fail

Any Text WCAG AA × Fail

Large Text (above 18pt) WCAG AAA × Fail

Any Text WCAG AAA × Fail

Black Background



This preview shows how the Hex color D5B3B1 looks on a black background.

Color Contrast Check

Large Text (above 18pt) WCAG AA ✓ Pass

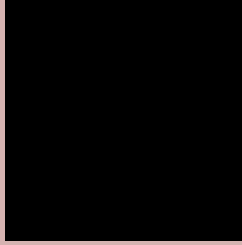
Any Text WCAG AA ✓ Pass

Large Text (above 18pt) WCAG AAA ✓ Pass

Any Text WCAG AAA ✓ Pass

If you want to check with other color combinations, try the [Color Contrast Checker](#).

Hex D5B3B1 Background



This preview shows how black text looks on a background with the Hex color D5B3B1.

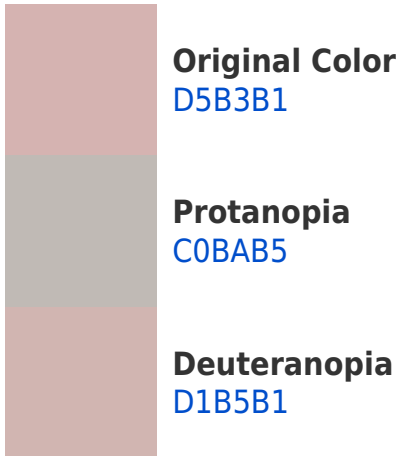


This preview shows how white text looks on a background with the Hex color D5B3B1.

Color Blindness Simulation

Color vision deficiency is a very complex topic, and I could not describe the different causes any better than Wikipedia does, so if you want to learn more, you should check out their [article about color blindness](#).

Dichromacy





Tritanopia
D7B1BF

Trichromacy



Original Color
D5B3B1

Protanomaly
C8B7B4

Deuteranomaly
D2B4B1

Tritanomaly
D6B2BA

Monochromacy



Original Color
D5B3B1

Achromatopsia
BDBDBD

Achromatomaly
C6B9B9

CSS Examples

Text

The CSS property to change the color of the text to Hex D5B3B1 is called "color". The color property can be set on classes, ids or directly on the HTML element.

This example shows how text in the color #D5B3B1 looks like.

```
.text, #text, p{  
    color:#D5B3B1  
}
```

If you want to add a text shadow in that color use the text-shadow property, you can generate a text shadow directly with our [CSS Text Shadow Generator](#).

Here you see how black text with a 4 pixel #D5B3B1 colored shadow looks like.

```
.shadow{ text-shadow: 4px 4px 2px #D5B3B1
}
```

Border

The CSS property to change the border of an element to Hex D5B3B1 is called "border". The border property can be set on classes, ids or directly on the HTML element.

This example shows the color as border, it can be applied via the CSS property "border" or "border-color".

```
.border, #border, table{ border:4px solid
#D5B3B1 }
```

If only the border color should be changed use the property `border-color`.

```
.border{ border-color:#D5B3B1 }
```

If you want to add a box shadow in that color use:

Here you see how a box with a 4 pixel #D5B3B1 colored shadow looks like.

```
.boxshadow{ -moz-box-shadow:4px 4px 4px  
4px #D5B3B1; -webkit-box-shadow:4px 4px  
4px 4px #D5B3B1; box-shadow:4px 4px 4px  
4px #D5B3B1 }
```

Background

The CSS property to change the background color of an element to Hex D5B3B1 is called "background". The background property can be set on classes, ids or directly on the HTML element.

```
.background, #background, body{  
background:#D5B3B1 }
```

If only the background color should be changed can be used:

```
.background{ background-color:#D5B3B1 }
```

This example shows the color as background, it is applied via the CSS property "background".

To optimize and compress your CSS code, you can use our [online CSS compressor and optimizer](#) based on csstidy. If you want to create a linear or radial gradient as background or border, check our [CSS Gradient Generator](#).

Hey! You found this booklet interesting? Support Converting Colors with the new Membership Option!

The pro membership hides all ads, plus gives you double the colors in the color bucket, and more awesome pro features!

[Learn more, Memberships starting at \\$2.50/m!](#)

**Follow me
on Twitter!**

@ConvertingColor