

Converting Colors

Hex(D5B3BF)

Have a look what the booklet for
Hex(D5B3BF) contains.

Hex(D5B3BF)	3
<i>Conversions</i>	4
<i>Details</i>	6
<i>Harmonies</i>	11
<i>Previews</i>	23
<i>Color Blindness Simulation</i>	26
<i>CSS Examples</i>	29

Color

Hex(D5B3BF)

Conversions

Conversions Part 1

Format	Color
Hex	D5B3BF
RGB	213, 179, 191
RGB Percent	84%, 70%, 75%
CMY	0.1647, 0.2980, 0.2510
CMYK	0.00, 0.16, 0.10, 0.16
HSL	339°, 29%, 77%
HSV	339°, 16%, 84%
XYZ	52.9646, 50.1479, 56.1782
YIQ	190.5340, 16.4120, 10.9400

Conversions

Conversions Part 2

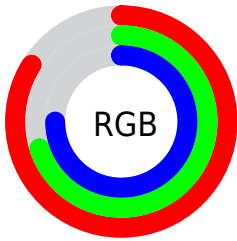
Format	Color
R _Y B	213, 179, 191
Decimal	14005183
CIE Lab	76.16, 14.21, -1.51
CIE LCh	76, 14.291, 353.919
Yxy	50.1479, 0.3325, 0.3148
Android (android.graphics.Color)	4292195263 (0xFFD5B3BF)
YUV	190.5340, 0.2297, 19.7027
Hunter-Lab	70.8152, 9.5785, 2.5355

Details

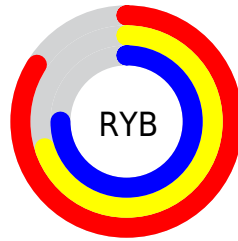
The Hex color **D5B3BF** is a light color, and the websafe version is hex **CC9999**. A complement of this color would be **B3D5C9**, and the grayscale version is **BFBFBF**.

A 20% lighter version of the original color is **FFE7F7**, and **9E7E8A** is the 20% darker color. If you saturate the color by 10%, you get **D59EB1**, and if you desaturate by 10%, it is **D5C8CD**.

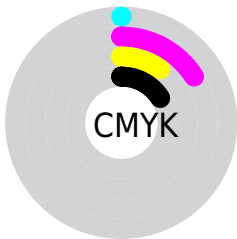
Distribution



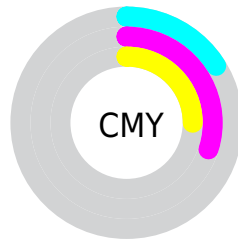
- Red (84%)
- Green (70%)
- Blue (75%)



- Red (84%)
- Yellow (70%)
- Blue (75%)



- Cyan (0%)
- Magenta (16%)
- Yellow (10%)
- Black (16%)



- Cyan (16%)
- Magenta (30%)
- Yellow (25%)

Brightness & Saturation Gradients

These gradients show how the Hex color D5B3BF changes by changing the brightness by 10 percent. The first figure shows a shift by +10% for each color and the second figure -10%.

Similar to the brightness gradients but the following saturation gradients show a change of the Hex color D5B3BF by changing the saturation by 10% instead.

 D5B3BF

 D5B3BF

FFFFFF

 B998A4

 FFEBF7

 9E7E8A

 846570

 6A4D58

 523641

 3A202B

 240B16

 000000

 D5B3BF

 D5B3BF

 D59EB1

 D5C8CD

 D588A3

 D5DEDB

 D57396

 D5F3E8

 D55E88

 D5FFF6

 D5487A

 D5FFFF

 D5336C

 D51E5F

 D50951

 D5004B

Harmonies

Analogous

The Analogous color harmony consists of three colors that are next to each other on the color wheel.



CBB5CB



D5B3BF



D8B3B2

Triad

The Triadic color harmony groups three colors that are evenly spaced from another and form a triangle on the color wheel.



D5B3BF



BBEA4



9EC1D1

Complementary

The Complementary color scheme is a pair of colors which are on the opposite of each other on the color wheel.



D5B3BF



B3D5C9

Split Complementary

Split-complementary colors differ from the complementary color scheme. The scheme consists of three colors, the original color and two neighbors of the complement color.



9AC3C6



D5B3BF



ACC2AC

Square

The Square scheme is like the rectangle color scheme, but the four colors are evenly spaced on the color wheel.



D5B3BF



C9BAA2



A0C3B9



AABED6

Rectangle

The Rectangle color scheme consists of four colors that form a rectangle on the color wheel.



D5B3BF



D6B5AA



A0C3B9



9CC2CE

Sweetspot

The Sweet Spot groups the original color and five complimentary colors.



D5B3BF



FFF2F7



C9B3D5



80787B



000000



808080

Same Dimension

The Same Dimension uses a secret algorithm to generate beautiful new colors.



D5B3BF



FFCFE0



D5B8B3



6B6064



AB003C



2B000F

Inverse Universe

The Inverse Universe completely reimagines the original color for something new.



D5B3BF



FFCFE0



B3D0D5



6B6064



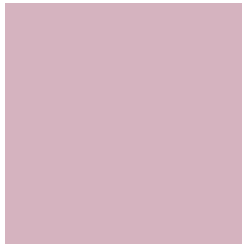
AB003C



2B000F

Previews

White Background



This preview shows how the Hex color D5B3BF looks on a white background.

Color Contrast Check

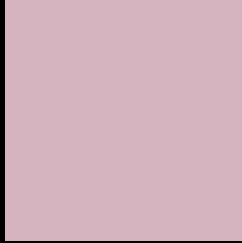
Large Text (above 18pt) WCAG AA × Fail

Any Text WCAG AA × Fail

Large Text (above 18pt) WCAG AAA × Fail

Any Text WCAG AAA × Fail

Black Background



This preview shows how the Hex color D5B3BF looks on a black background.

Color Contrast Check

Large Text (above 18pt) WCAG AA ✓ Pass

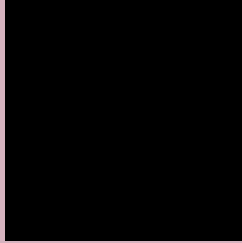
Any Text WCAG AA ✓ Pass

Large Text (above 18pt) WCAG AAA ✓ Pass

Any Text WCAG AAA ✓ Pass

If you want to check with other color combinations, try the [Color Contrast Checker](#).

Hex D5B3BF Background



This preview shows how black text looks on a background with the Hex color D5B3BF.



This preview shows how white text looks on a background with the Hex color D5B3BF.

Color Blindness Simulation

Color vision deficiency is a very complex topic, and I could not describe the different causes any better than Wikipedia does, so if you want to learn more, you should check out their [article about color blindness](#).

Dichromacy



Original Color
D5B3BF

Protanopia
BDBBC4

Deuteranopia
CDB6BE



Tritanopia
D5B3C1

Trichromacy



Original Color
D5B3BF

Protanomaly
C6B8C2

Deuteranomaly
D0B5BE

Tritanomaly
D5B3C0

Monochromacy



Original Color
D5B3BF

Achromatopsia
BFBFBF

Achromatomaly
C7BBBB

CSS Examples

Text

The CSS property to change the color of the text to Hex D5B3BF is called "color". The color property can be set on classes, ids or directly on the HTML element.

This example shows how text in the color #D5B3BF looks like.

```
.text, #text, p{  
    color:#D5B3BF  
}
```

If you want to add a text shadow in that color use the text-shadow property, you can generate a text shadow directly with our [CSS Text Shadow Generator](#).

Here you see how black text with a 4 pixel #D5B3BF colored shadow looks like.

```
.shadow{ text-shadow: 4px 4px 2px #D5B3BF
}
```

Border

The CSS property to change the border of an element to Hex D5B3BF is called "border". The border property can be set on classes, ids or directly on the HTML element.

This example shows the color as border, it can be applied via the CSS property "border" or "border-color".

```
.border, #border, table{ border:4px solid
#D5B3BF }
```

If only the border color should be changed use the property `border-color`.

```
.border{ border-color:#D5B3BF }
```

If you want to add a box shadow in that color use:

Here you see how a box with a 4 pixel #D5B3BF colored shadow looks like.

```
.boxshadow{ -moz-box-shadow:4px 4px 4px  
4px #D5B3BF; -webkit-box-shadow:4px 4px  
4px 4px #D5B3BF; box-shadow:4px 4px 4px  
4px #D5B3BF }
```

Background

The CSS property to change the background color of an element to Hex D5B3BF is called "background". The background property can be set on classes, ids or directly on the HTML element.

```
.background, #background, body{  
background:#D5B3BF }
```

If only the background color should be changed can be used:

```
.background{ background-color:#D5B3BF }
```

This example shows the color as background, it is applied via the CSS property "background".

To optimize and compress your CSS code, you can use our [online CSS compressor and optimizer](#) based on csstidy. If you want to create a linear or radial gradient as background or border, check our [CSS Gradient Generator](#).

Hey! You found this booklet interesting? Support Converting Colors with the new Membership Option!

The pro membership hides all ads, plus gives you double the colors in the color bucket, and more awesome pro features!

[Learn more, Memberships starting at \\$2.50/m!](#)

**Follow me
on Twitter!**

@ConvertingColor