

Converting Colors

Hex(D5B4A4)

Have a look what the booklet for
Hex(D5B4A4) contains.

Hex(D5B4A4)	3
<i>Conversions</i>	4
<i>Details</i>	6
<i>Harmonies</i>	11
<i>Previews</i>	23
<i>Color Blindness Simulation</i>	26
<i>CSS Examples</i>	29

Color

Hex(D5B4A4)

Conversions

Conversions Part 1

Format	Color
Hex	D5B4A4
RGB	213, 180, 164
RGB Percent	84%, 71%, 64%
CMY	0.1647, 0.2941, 0.3569
CMYK	0.00, 0.15, 0.23, 0.16
HSL	20°, 37%, 74%
HSV	20°, 23%, 84%
XYZ	50.4627, 49.4690, 42.0108
YIQ	188.0430, 24.8040, 2.0200

Conversions

Conversions Part 2

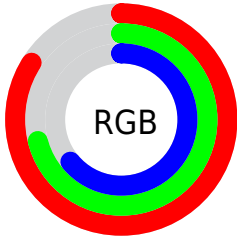
Format	Color
RYB	213, 188, 164
Decimal	14005412
CIELab	75.74, 9.43, 12.58
CIELCh	76, 15.717, 53.140
Yxy	49.4690, 0.3555, 0.3485
Android (android.graphics.Color)	4292195492 (0xFFD5B4A4)
YUV	188.0430, -11.8532, 21.8873
Hunter-Lab	70.3342, 4.9836, 13.8199

Details

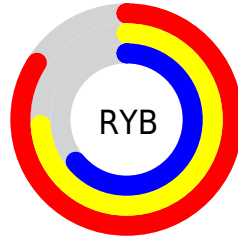
The Hex color **D5B4A4** is a light color, and the websafe version is hex **CC9999**. A complement of this color would be **A4C5D5**, and the grayscale version is **BCBCBC**.

A 20% lighter version of the original color is **FFECDB**, and **9E7F70** is the 20% darker color. If you saturate the color by 10%, you get **D5A68F**, and if you desaturate by 10%, it is **D5C2B9**.

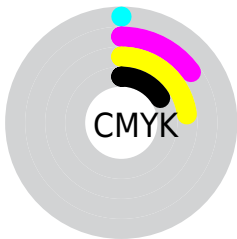
Distribution



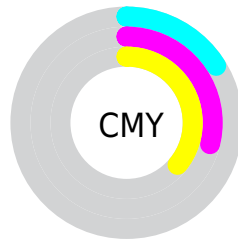
- Red (84%)
- Green (71%)
- Blue (64%)



- Red (84%)
- Yellow (74%)
- Blue (64%)



- Cyan (0%)
- Magenta (15%)
- Yellow (23%)
- Black (16%)



- Cyan (16%)
- Magenta (29%)
- Yellow (36%)

Brightness & Saturation Gradients

These gradients show how the Hex color D5B4A4 changes by changing the brightness by 10 percent. The first figure shows a shift by +10% for each color and the second figure -10%.

Similar to the brightness gradients but the following saturation gradients show a change of the Hex color D5B4A4 by changing the saturation by 10% instead.

 D5B4A4

 D5B4A4

FFFFFF

 B9998A

 FFECDB

 9E7F70

 FFFFF7

 836658

 694E40

 51372A

 392216

 240C00

 000000

 D5B4A4

 D5B4A4

 D5A68F

 D5C2B9

 D59779

 D5D1CF

 D58964

 D5DFE4

 D57B4F

 D5EDF9

 D56C3A

 D5FCFF

 D55E24

 D5FFFF

 D5500F

 D54600

Harmonies

Analogous

The Analogous color harmony consists of three colors that are next to each other on the color wheel.



DAB1B0



D5B4A4



CAB89E

Triad

The Triadic color harmony groups three colors that are evenly spaced from another and form a triangle on the color wheel.



D5B4A4



9CC3B7



B9B8D5

Complementary

The Complementary color scheme is a pair of colors which are on the opposite of each other on the color wheel.



D5B4A4



A4C5D5

Split Complementary

Split-complementary colors differ from the complementary color scheme. The scheme consists of three colors, the original color and two neighbors of the complement color.



A7BDD7



D5B4A4



95C3C5

Square

The Square scheme is like the rectangle color scheme, but the four colors are evenly spaced on the color wheel.



D5B4A4



A9C1A9



99C1D1



CAB4CC

Rectangle

The Rectangle color scheme consists of four colors that form a rectangle on the color wheel.



D5B4A4



C0BC9E



99C1D1



B3BAD7

Sweetspot

The Sweet Spot groups the original color and five complimentary colors.



D5B4A4



FFF3ED



D5A4C5



807975



000000



808080

Same Dimension

The Same Dimension uses a secret algorithm to generate beautiful new colors.



D5B4A4



FFCFB8



D5CCA4



6B6460



AB3800



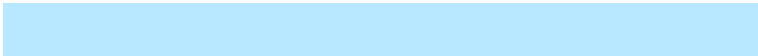
2B0E00

Inverse Universe

The Inverse Universe completely reimagines the original color for something new.



A4C5D5



B8E8FF



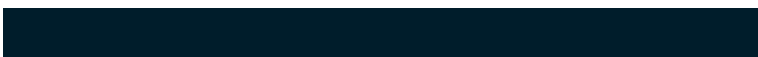
A4ADD5



60686B



0073AB



001D2B

Previews

White Background



This preview shows how the Hex color D5B4A4 looks on a white background.

Color Contrast Check

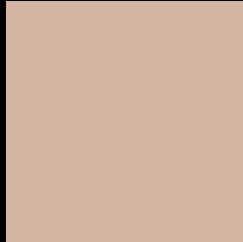
Large Text (above 18pt) WCAG AA × Fail

Any Text WCAG AA × Fail

Large Text (above 18pt) WCAG AAA × Fail

Any Text WCAG AAA × Fail

Black Background



This preview shows how the Hex color D5B4A4 looks on a black background.

Color Contrast Check

Large Text (above 18pt) WCAG AA ✓ Pass

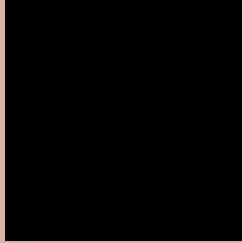
Any Text WCAG AA ✓ Pass

Large Text (above 18pt) WCAG AAA ✓ Pass

Any Text WCAG AAA ✓ Pass

If you want to check with other color combinations, try the [Color Contrast Checker](#).

Hex D5B4A4 Background



This preview shows how black text looks on a background with the Hex color D5B4A4.



This preview shows how white text looks on a background with the Hex color D5B4A4.

Color Blindness Simulation

Color vision deficiency is a very complex topic, and I could not describe the different causes any better than Wikipedia does, so if you want to learn more, you should check out their [article about color blindness](#).

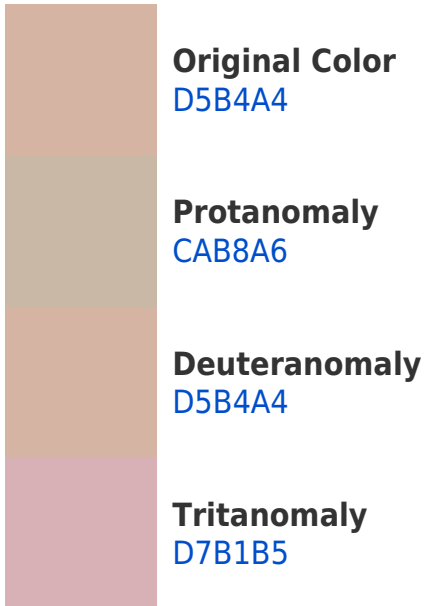
Dichromacy





Tritanopia
D8B0BE

Trichromacy



Monochromacy



CSS Examples

Text

The CSS property to change the color of the text to Hex D5B4A4 is called "color". The color property can be set on classes, ids or directly on the HTML element.

This example shows how text in the color #D5B4A4 looks like.

```
.text, #text, p{  
    color:#D5B4A4  
}
```

If you want to add a text shadow in that color use the text-shadow property, you can generate a text shadow directly with our [CSS Text Shadow Generator](#).

Here you see how black text with a 4 pixel #D5B4A4 colored shadow looks like.

```
.shadow{ text-shadow: 4px 4px 2px #D5B4A4 }  
}
```

Border

The CSS property to change the border of an element to Hex D5B4A4 is called "border". The border property can be set on classes, ids or directly on the HTML element.

This example shows the color as border, it can be applied via the CSS property "border" or "border-color".

```
.border, #border, table{ border:4px solid #D5B4A4 }  
}
```

If only the border color should be changed use the property `border-color`.

```
.border{ border-color:#D5B4A4 }
```

If you want to add a box shadow in that color use:

Here you see how a box with a 4 pixel #D5B4A4 colored shadow looks like.

```
.boxshadow{ -moz-box-shadow:4px 4px 4px  
4px #D5B4A4; -webkit-box-shadow:4px 4px  
4px 4px #D5B4A4; box-shadow:4px 4px 4px  
4px #D5B4A4 }
```

Background

The CSS property to change the background color of an element to Hex D5B4A4 is called "background". The background property can be set on classes, ids or directly on the HTML element.

```
.background, #background, body{  
background:#D5B4A4 }
```

If only the background color should be changed can be used:

```
.background{ background-color:#D5B4A4 }
```

This example shows the color as background, it is applied via the CSS property "background".

To optimize and compress your CSS code, you can use our [online CSS compressor and optimizer](#) based on csstidy. If you want to create a linear or radial gradient as background or border, check our [CSS Gradient Generator](#).

Hey! You found this booklet interesting? Support Converting Colors with the new Membership Option!

The pro membership hides all ads, plus gives you double the colors in the color bucket, and more awesome pro features!

[Learn more, Memberships starting at \\$2.50/m!](#)

**Follow me
on Twitter!**

@ConvertingColor