

# Converting Colors

Hex(D5B8AF)

Have a look what the booklet for  
Hex(D5B8AF) contains.

<b>Hex(D5B8AF)</b> .....	3
<i><b>Conversions</b></i> .....	4
<i><b>Details</b></i> .....	6
<i><b>Harmonies</b></i> .....	11
<i><b>Previews</b></i> .....	23
<i><b>Color Blindness Simulation</b></i> .....	26
<i><b>CSS Examples</b></i> .....	29

# **Color**

**Hex(D5B8AF)**

# Conversions

## Conversions Part 1

Format	Color
Hex	D5B8AF
RGB	213, 184, 175
RGB Percent	84%, 72%, 69%
CMY	0.1647, 0.2784, 0.3137
CMYK	0.00, 0.14, 0.18, 0.16
HSL	14°, 31%, 76%
HSV	14°, 18%, 84%
XYZ	52.3189, 51.5223, 47.7447
YIQ	191.6450, 20.1730, 3.3490

# Conversions

## Conversions Part 2

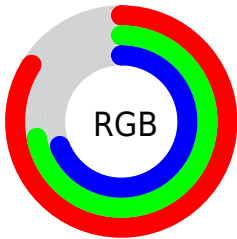
Format	Color
R <sub>Y</sub> B	213, 187, 175
Decimal	14006447
CIE Lab	76.99, 8.94, 8.39
CIE LCh	77, 12.257, 43.198
Yxy	51.5223, 0.3451, 0.3399
Android (android.graphics.Color)	4292196527 (0xFFD5B8AF)
YUV	191.6450, -8.2060, 18.7283
Hunter-Lab	71.7790, 4.4934, 10.8078

# Details

The Hex color **D5B8AF** is a light color, and the websafe version is hex **FFCCCC**. A complement of this color would be **AFCCD5**, and the grayscale version is **C0C0C0**.

A 20% lighter version of the original color is **FFF0E7**, and **9E837B** is the 20% darker color. If you saturate the color by 10%, you get **D5A89A**, and if you desaturate by 10%, it is **D5C8C4**.

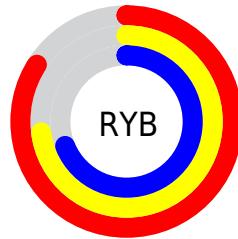
# Distribution



Red (84%)

Green (72%)

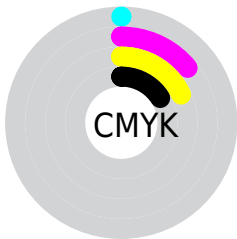
Blue (69%)



Red (84%)

Yellow (73%)

Blue (69%)

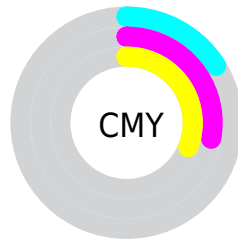


Cyan (0%)

Magenta (14%)

Yellow (18%)

Black (16%)



Cyan (16%)

Magenta (28%)

Yellow (31%)

# Brightness & Saturation Gradients

These gradients show how the Hex color D5B8AF changes by changing the brightness by 10 percent. The first figure shows a shift by +10% for each color and the second figure -10%.

Similar to the brightness gradients but the following saturation gradients show a change of the Hex color D5B8AF by changing the saturation by 10% instead.



 D5B8AF

 D5B8AF

FFFFFF

 B99D94

 FFF0E7

 9E837B

 846A62

 6A524A

 513B33

 3A251E

 241005

 000000

 D5B8AF

 D5B8AF

 D5A89A

 D5C8C4

 D59784

 D5D9DA

 D5876F

 D5E9EF

 D5775A

 D5F9FF

 D56745

 D5FFFF

 D5562F

 D5461A

 D53605

 D53200

# Harmonies

## Analogous

The Analogous color harmony consists of three colors that are next to each other on the color wheel.



D6B6B9



D5B8AF



CEBBA9

# Triad

The Triadic color harmony groups three colors that are evenly spaced from another and form a triangle on the color wheel.



D5B8AF



A9C4B7



B8BDD4

# Complementary

The Complementary color scheme is a pair of colors which are on the opposite of each other on the color wheel.



D5B8AF



AFCCD5

# Split Complementary

Split-complementary colors differ from the complementary color scheme. The scheme consists of three colors, the original color and two neighbors of the complement color.



ABC1D3



D5B8AF



A2C5C3

# Square

The Square scheme is like the rectangle color scheme, but the four colors are evenly spaced on the color wheel.



D5B8AF



B5C2AD



A3C4CD



C6BACF

# Rectangle

The Rectangle color scheme consists of four colors that form a rectangle on the color wheel.



D5B8AF



C6BEA8



A3C4CD



B4BFD4



# Sweetspot

The Sweet Spot groups the original color and five complimentary colors.



D5B8AF



FFF5F2



D5AFCC



807A78



000000



808080



# Same Dimension

The Same Dimension uses a secret algorithm to generate beautiful new colors.



D5B8AF



FFD6C9



D5CBAF



6B6360



AB2800



2B0A00

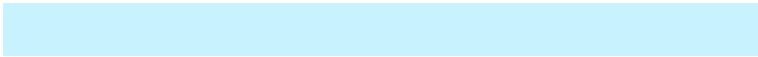


# Inverse Universe

The Inverse Universe completely reimagines the original color for something new.



AFCCD5



C9F2FF



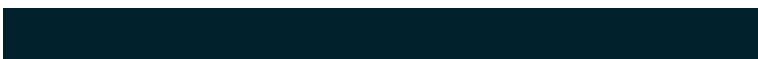
AFB9D5



60696B



0082AB

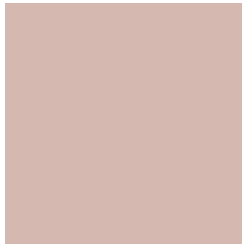


00212B



# Previews

## White Background



This preview shows how the Hex color D5B8AF looks on a white background.

## Color Contrast Check

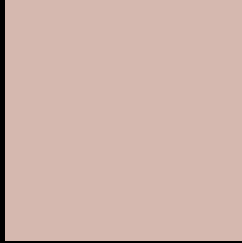
Large Text (above 18pt) WCAG AA × Fail

Any Text WCAG AA × Fail

Large Text (above 18pt) WCAG AAA × Fail

Any Text WCAG AAA × Fail

# Black Background



This preview shows how the Hex color D5B8AF looks on a black background.

## Color Contrast Check

Large Text (above 18pt) WCAG AA ✓ Pass

Any Text WCAG AA ✓ Pass

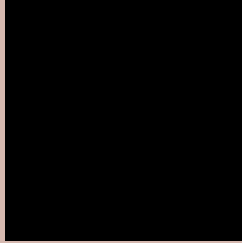
Large Text (above 18pt) WCAG AAA ✓ Pass

Any Text WCAG AAA ✓ Pass

If you want to check with other color combinations, try the [Color Contrast Checker](#).



## Hex D5B8AF Background



This preview shows how black text looks on a background with the Hex color D5B8AF.



This preview shows how white text looks on a background with the Hex color D5B8AF.

# Color Blindness Simulation

Color vision deficiency is a very complex topic, and I could not describe the different causes any better than Wikipedia does, so if you want to learn more, you should check out their [article about color blindness](#).

## Dichromacy



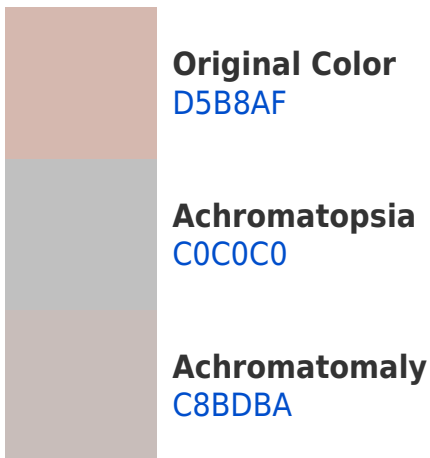


**Tritanopia**  
D8B5C3

# Trichromacy



# Monochromacy



# CSS Examples

## Text

The CSS property to change the color of the text to Hex D5B8AF is called "color". The color property can be set on classes, ids or directly on the HTML element.

This example shows how text in the color #D5B8AF looks like.

```
.text, #text, p{  
    color:#D5B8AF  
}
```

If you want to add a text shadow in that color use the text-shadow property, you can generate a text shadow directly with our [CSS Text Shadow Generator](#).

Here you see how black text with a 4 pixel #D5B8AF colored shadow looks like.

```
.shadow{ text-shadow: 4px 4px 2px #D5B8AF
}
```

## Border

The CSS property to change the border of an element to Hex D5B8AF is called "border". The border property can be set on classes, ids or directly on the HTML element.

This example shows the color as border, it can be applied via the CSS property "border" or "border-color".

```
.border, #border, table{ border:4px solid
#D5B8AF }
```

If only the border color should be changed use the property `border-color`.

```
.border{ border-color:#D5B8AF }
```

If you want to add a box shadow in that color use:

Here you see how a box with a 4 pixel #D5B8AF colored shadow looks like.

```
.boxshadow{ -moz-box-shadow:4px 4px 4px  
4px #D5B8AF; -webkit-box-shadow:4px 4px  
4px 4px #D5B8AF; box-shadow:4px 4px 4px  
4px #D5B8AF }
```

# Background

The CSS property to change the background color of an element to Hex D5B8AF is called "background". The background property can be set on classes, ids or directly on the HTML element.

```
.background, #background, body{  
background:#D5B8AF }
```

If only the background color should be changed can be used:

```
.background{ background-color:#D5B8AF }
```

This example shows the color as background, it is applied via the CSS property "background".

To optimize and compress your CSS code, you can use our [online CSS compressor and optimizer](#) based on csstidy. If you want to create a linear or radial gradient as background or border, check our [CSS Gradient Generator](#).



Hey! You found this booklet interesting? Support Converting Colors with the new Membership Option!

The pro membership hides all ads, plus gives you double the colors in the color bucket, and more awesome pro features!

**[Learn more, Memberships starting at \\$2.50/m!](#)**

**Follow me  
on Twitter!**

@ConvertingColor