

Converting Colors

Hex(D5B9BB)

Have a look what the booklet for
Hex(D5B9BB) contains.

Hex(D5B9BB)	3
<i>Conversions</i>	4
<i>Details</i>	6
<i>Harmonies</i>	11
<i>Previews</i>	23
<i>Color Blindness Simulation</i>	26
<i>CSS Examples</i>	29

Color

Hex(D5B9BB)

Conversions

Conversions Part 1

Format	Color
Hex	D5B9BB
RGB	213, 185, 187
RGB Percent	84%, 73%, 73%
CMY	0.1647, 0.2745, 0.2667
CMYK	0.00, 0.13, 0.12, 0.16
HSL	356°, 25%, 78%
HSV	356°, 13%, 84%
XYZ	53.7592, 52.4319, 54.3007
YIQ	193.6000, 16.0460, 6.5580

Conversions

Conversions Part 2

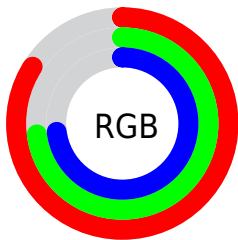
Format	Color
R _Y B	213, 185, 187
Decimal	14006715
CIE Lab	77.54, 10.32, 2.67
CIE LCh	78, 10.656, 14.510
Yxy	52.4319, 0.3350, 0.3267
Android (android.graphics.Color)	4292196795 (0xFFD5B9BB)
YUV	193.6000, -3.2538, 17.0138
Hunter-Lab	72.4099, 5.8062, 6.2249

Details

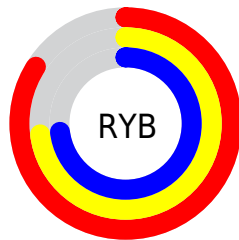
The Hex color **D5B9BB** is a light color, and the websafe version is hex **CCCCCC**. A complement of this color would be **B9D5D3**, and the grayscale version is **C2C2C2**.

A 20% lighter version of the original color is **FFF1F3**, and **9E8486** is the 20% darker color. If you saturate the color by 10%, you get **D5A4A7**, and if you desaturate by 10%, it is **D5CECF**.

Distribution



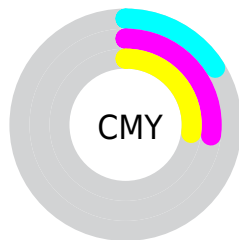
- Red (84%)
- Green (73%)
- Blue (73%)



- Red (84%)
- Yellow (73%)
- Blue (73%)



- Cyan (0%)
- Magenta (13%)
- Yellow (12%)
- Black (16%)



- Cyan (16%)
- Magenta (27%)
- Yellow (27%)

Brightness & Saturation Gradients

These gradients show how the Hex color D5B9BB changes by changing the brightness by 10 percent. The first figure shows a shift by +10% for each color and the second figure -10%.

Similar to the brightness gradients but the following saturation gradients show a change of the Hex color D5B9BB by changing the saturation by 10% instead.

 D5B9BB

 D5B9BB

FFFFFF

 B99EA0

 FFF1F3

 9E8486

 846B6D

 6A5254

 523B3D

 3A2528

 241113

 000000

 D5B9BB

 D5B9BB

 D5A4A7

 D5CECF

 D58E93

 D5E4E3

 D57980

 D5F9F6

 D5646C

 D5FFFF

 D54E58

 D53944

 D52431

 D50F1D

 D5000F

Harmonies

Analogous

The Analogous color harmony consists of three colors that are next to each other on the color wheel.



D1B9C5



D5B9BB



D4BAB2

Triad

The Triadic color harmony groups three colors that are evenly spaced from another and form a triangle on the color wheel.



D5B9BB



B7C3B1



B0C2D2

Complementary

The Complementary color scheme is a pair of colors which are on the opposite of each other on the color wheel.



D5B9BB



B9D5D3

Split Complementary

Split-complementary colors differ from the complementary color scheme. The scheme consists of three colors, the original color and two neighbors of the complement color.



A8C4CD



D5B9BB



ADC5BA

Square

The Square scheme is like the rectangle color scheme, but the four colors are evenly spaced on the color wheel.



D5B9BB



C3C0AC



A8C6C4



BBFD3

Rectangle

The Rectangle color scheme consists of four colors that form a rectangle on the color wheel.



D5B9BB



D0BCAE



A8C6C4



ADC3D1

Sweetspot

The Sweet Spot groups the original color and five complimentary colors.



D5B9BB



FFF5F6



D3B9D5



80797A



000000



808080

Same Dimension

The Same Dimension uses a secret algorithm to generate beautiful new colors.



D5B9BB



FFD6D9



D5C5B9



6B6061



AB000C



2B0003

Inverse Universe

The Inverse Universe completely reimagines the original color for something new.



D5B9BB



FFD6D9



B9C9D5



6B6061



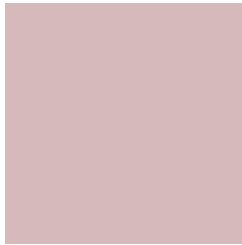
AB000C



2B0003

Previews

White Background



This preview shows how the Hex color D5B9BB looks on a white background.

Color Contrast Check

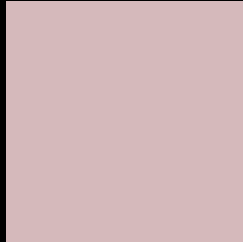
Large Text (above 18pt) WCAG AA × Fail

Any Text WCAG AA × Fail

Large Text (above 18pt) WCAG AAA × Fail

Any Text WCAG AAA × Fail

Black Background



This preview shows how the Hex color D5B9BB looks on a black background.

Color Contrast Check

Large Text (above 18pt) WCAG AA ✓ Pass

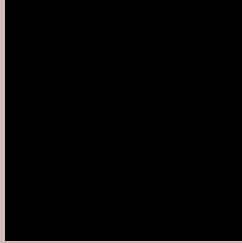
Any Text WCAG AA ✓ Pass

Large Text (above 18pt) WCAG AAA ✓ Pass

Any Text WCAG AAA ✓ Pass

If you want to check with other color combinations, try the [Color Contrast Checker](#).

Hex D5B9BB Background



This preview shows how black text looks on a background with the Hex color D5B9BB.

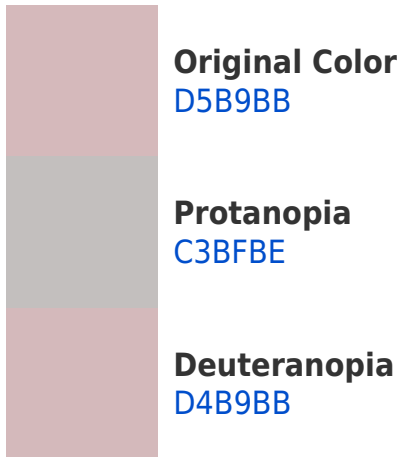


This preview shows how white text looks on a background with the Hex color D5B9BB.

Color Blindness Simulation

Color vision deficiency is a very complex topic, and I could not describe the different causes any better than Wikipedia does, so if you want to learn more, you should check out their [article about color blindness](#).

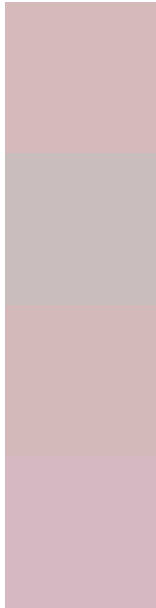
Dichromacy





Tritanopia
D6B7C6

Trichromacy



Original Color
D5B9BB

Protanomaly
CABDBD

Deuteranomaly
D4B9BB

Tritanomaly
D6B8C2

Monochromacy



Original Color
D5B9BB

Achromatopsia
C2C2C2

Achromatomaly
C9BFBF

CSS Examples

Text

The CSS property to change the color of the text to Hex D5B9BB is called "color". The color property can be set on classes, ids or directly on the HTML element.

This example shows how text in the color #D5B9BB looks like.

```
.text, #text, p{  
    color:#D5B9BB  
}
```

If you want to add a text shadow in that color use the text-shadow property, you can generate a text shadow directly with our [CSS Text Shadow Generator](#).

Here you see how black text with a 4 pixel #D5B9BB colored shadow looks like.

```
.shadow{ text-shadow: 4px 4px 2px #D5B9BB  
}
```

Border

The CSS property to change the border of an element to Hex D5B9BB is called "border". The border property can be set on classes, ids or directly on the HTML element.

This example shows the color as border, it can be applied via the CSS property "border" or "border-color".

```
.border, #border, table{ border:4px solid  
#D5B9BB }
```

If only the border color should be changed use the property `border-color`.

```
.border{ border-color:#D5B9BB }
```

If you want to add a box shadow in that color use:

Here you see how a box with a 4 pixel #D5B9BB colored shadow looks like.

```
.boxshadow{ -moz-box-shadow:4px 4px 4px  
4px #D5B9BB; -webkit-box-shadow:4px 4px  
4px 4px #D5B9BB; box-shadow:4px 4px 4px  
4px #D5B9BB }
```

Background

The CSS property to change the background color of an element to Hex D5B9BB is called "background". The background property can be set on classes, ids or directly on the HTML element.

```
.background, #background, body{  
background:#D5B9BB }
```

If only the background color should be changed can be used:

```
.background{ background-color:#D5B9BB }
```

This example shows the color as background, it is applied via the CSS property "background".

To optimize and compress your CSS code, you can use our [online CSS compressor and optimizer](#) based on csstidy. If you want to create a linear or radial gradient as background or border, check our [CSS Gradient Generator](#).

Hey! You found this booklet interesting? Support Converting Colors with the new Membership Option!

The pro membership hides all ads, plus gives you double the colors in the color bucket, and more awesome pro features!

[Learn more, Memberships starting at \\$2.50/m!](#)

**Follow me
on Twitter!**

@ConvertingColor