

Converting Colors

Hex(D5B9C4)

Have a look what the booklet for
Hex(D5B9C4) contains.

Hex(D5B9C4)	3
<i>Conversions</i>	4
<i>Details</i>	6
<i>Harmonies</i>	11
<i>Previews</i>	23
<i>Color Blindness Simulation</i>	26
<i>CSS Examples</i>	29

Color

Hex(D5B9C4)

Conversions

Conversions Part 1

Format	Color
Hex	D5B9C4
RGB	213, 185, 196
RGB Percent	84%, 73%, 77%
CMY	0.1647, 0.2745, 0.2314
CMYK	0.00, 0.13, 0.08, 0.16
HSL	336°, 25%, 78%
HSV	336°, 13%, 84%
XYZ	54.7533, 52.8296, 59.5359
YIQ	194.6260, 13.1570, 9.3570

Conversions

Conversions Part 2

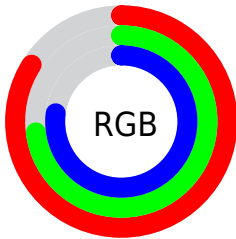
Format	Color
R_{YB}	213, 185, 196
Decimal	14006724
CIE _{Lab}	77.77, 11.83, -1.86
CIE _{LCh}	78, 11.979, 351.044
Yxy	52.8296, 0.3276, 0.3161
Android (android.graphics.Color)	4292196804 (0xFFD5B9C4)
YUV	194.6260, 0.6774, 16.1140
Hunter-Lab	72.6840, 7.2684, 2.3140

Details

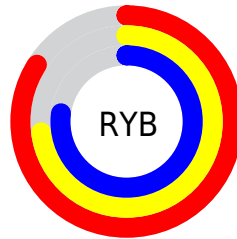
The Hex color **D5B9C4** is a light color, and the websafe version is hex **CCCCCC**. A complement of this color would be **B9D5CA**, and the grayscale version is **C3C3C3**.

A 20% lighter version of the original color is **FFF1FD**, and **9E848E** is the 20% darker color. If you saturate the color by 10%, you get **D5A4B7**, and if you desaturate by 10%, it is **D5CED1**.

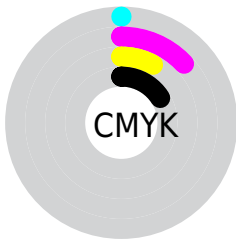
Distribution



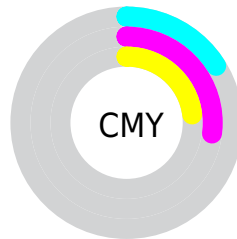
- Red (84%)
- Green (73%)
- Blue (77%)



- Red (84%)
- Yellow (73%)
- Blue (77%)



- Cyan (0%)
- Magenta (13%)
- Yellow (8%)
- Black (16%)



- Cyan (16%)
- Magenta (27%)
- Yellow (23%)

Brightness & Saturation Gradients

These gradients show how the Hex color D5B9C4 changes by changing the brightness by 10 percent. The first figure shows a shift by +10% for each color and the second figure -10%.

Similar to the brightness gradients but the following saturation gradients show a change of the Hex color D5B9C4 by changing the saturation by 10% instead.

 D5B9C4

 D5B9C4

FFFFFF

 B99EA9

 FFF1FD

 9E848E

 846B75

 6B525C

 523B45

 3B252E

 25111A

 060000

 000000

 D5B9C4

 D5B9C4

 D5A4B7

 D5CED1

 D58EAA

 D5E4DE

 D5799D

 D5F9EB

 D56490

 D5FFF8

 D54E83

 D5FFFF

 D53976

 D52469

 D50F5D

 D50054

Harmonies

Analogous

The Analogous color harmony consists of three colors that are next to each other on the color wheel.



CCBBCE



D5B9C4



D8B9B9

Triad

The Triadic color harmony groups three colors that are evenly spaced from another and form a triangle on the color wheel.



D5B9C4



C1C2AB



A7C5D1

Complementary

The Complementary color scheme is a pair of colors which are on the opposite of each other on the color wheel.



D5B9C4



B9D5CA

Split Complementary

Split-complementary colors differ from the complementary color scheme. The scheme consists of three colors, the original color and two neighbors of the complement color.



A4C7C8



D5B9C4



B4C5B2

Square

The Square scheme is like the rectangle color scheme, but the four colors are evenly spaced on the color wheel.



D5B9C4



CDBEAB



A9C7BC



B1C2D6

Rectangle

The Rectangle color scheme consists of four colors that form a rectangle on the color wheel.



D5B9C4



D7BAB2



A9C7BC



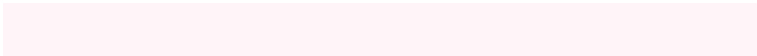
A5C6CE

Sweetspot

The Sweet Spot groups the original color and five complimentary colors.



D5B9C4



FFF5F9



CAB9D5



80797C



000000



808080

Same Dimension

The Same Dimension uses a secret algorithm to generate beautiful new colors.



D5B9C4



FFD6E6



D5BCB9



6B6065



AB0043



2B0011

Inverse Universe

The Inverse Universe completely reimagines the original color for something new.



D5B9C4



FFD6E6



B9D2D5



6B6065



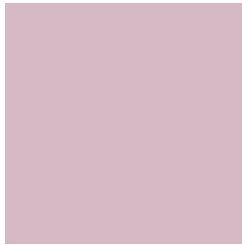
AB0043



2B0011

Previews

White Background



This preview shows how the Hex color D5B9C4 looks on a white background.

Color Contrast Check

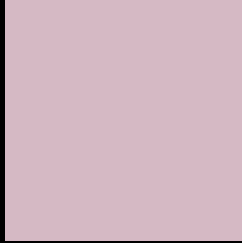
Large Text (above 18pt) WCAG AA × Fail

Any Text WCAG AA × Fail

Large Text (above 18pt) WCAG AAA × Fail

Any Text WCAG AAA × Fail

Black Background



This preview shows how the Hex color D5B9C4 looks on a black background.

Color Contrast Check

Large Text (above 18pt) WCAG AA ✓ Pass

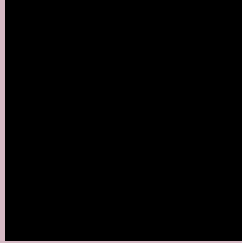
Any Text WCAG AA ✓ Pass

Large Text (above 18pt) WCAG AAA ✓ Pass

Any Text WCAG AAA ✓ Pass

If you want to check with other color combinations, try the [Color Contrast Checker](#).

Hex D5B9C4 Background



This preview shows how black text looks on a background with the Hex color D5B9C4.

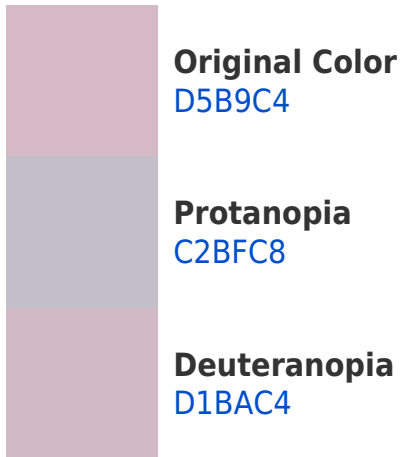


This preview shows how white text looks on a background with the Hex color D5B9C4.

Color Blindness Simulation

Color vision deficiency is a very complex topic, and I could not describe the different causes any better than Wikipedia does, so if you want to learn more, you should check out their [article about color blindness](#).

Dichromacy





Tritanopia
D5B9C7

Trichromacy



Original Color
D5B9C4

Protanomaly
C9BDC7

Deuteranomaly
D2BAC4

Tritanomaly
D5B9C6

Monochromacy



Original Color
D5B9C4

Achromatopsia
C3C3C3

Achromatomaly
CABFC3

CSS Examples

Text

The CSS property to change the color of the text to Hex D5B9C4 is called "color". The color property can be set on classes, ids or directly on the HTML element.

This example shows how text in the color #D5B9C4 looks like.

```
.text, #text, p{  
  color:#D5B9C4  
}
```

If you want to add a text shadow in that color use the text-shadow property, you can generate a text shadow directly with our [CSS Text Shadow Generator](#).

Here you see how black text with a 4 pixel #D5B9C4 colored shadow looks like.

```
.shadow{ text-shadow: 4px 4px 2px #D5B9C4  
}
```

Border

The CSS property to change the border of an element to Hex D5B9C4 is called "border". The border property can be set on classes, ids or directly on the HTML element.

This example shows the color as border, it can be applied via the CSS property "border" or "border-color".

```
.border, #border, table{ border:4px solid  
#D5B9C4 }
```

If only the border color should be changed use the property `border-color`.

```
.border{ border-color:#D5B9C4 }
```

If you want to add a box shadow in that color use:

Here you see how a box with a 4 pixel #D5B9C4 colored shadow looks like.

```
.boxshadow{ -moz-box-shadow:4px 4px 4px  
4px #D5B9C4; -webkit-box-shadow:4px 4px  
4px 4px #D5B9C4; box-shadow:4px 4px 4px  
4px #D5B9C4 }
```

Background

The CSS property to change the background color of an element to Hex D5B9C4 is called "background". The background property can be set on classes, ids or directly on the HTML element.

```
.background, #background, body{  
background:#D5B9C4 }
```

If only the background color should be changed can be used:

```
.background{ background-color:#D5B9C4 }
```

This example shows the color as background, it is applied via the CSS property "background".

To optimize and compress your CSS code, you can use our [online CSS compressor and optimizer](#) based on csstidy. If you want to create a linear or radial gradient as background or border, check our [CSS Gradient Generator](#).

Hey! You found this booklet interesting? Support Converting Colors with the new Membership Option!

The pro membership hides all ads, plus gives you double the colors in the color bucket, and more awesome pro features!

[Learn more, Memberships starting at \\$2.50/m!](#)

**Follow me
on Twitter!**

@ConvertingColor