

# Converting Colors

Hex(D5BAC0)

Have a look what the booklet for  
Hex(D5BAC0) contains.

|  |    |
|--|----|
| <b>Hex(D5BAC0)</b> .....                       | 3  |
| <b><i>Conversions</i></b> .....                | 4  |
| <b><i>Details</i></b> .....                    | 6  |
| <b><i>Harmonies</i></b> .....                  | 11 |
| <b><i>Previews</i></b> .....                   | 23 |
| <b><i>Color Blindness Simulation</i></b> ..... | 26 |
| <b><i>CSS Examples</i></b> .....               | 29 |

# **Color**

**Hex(D5BAC0)**

# Conversions

## Conversions Part 1

| Format      | Color                     |
|-------------|---------------------------|
| Hex         | D5BAC0                    |
| RGB         | 213, 186, 192             |
| RGB Percent | 84%, 73%, 75%             |
| CMY         | 0.1647, 0.2706, 0.2471    |
| CMYK        | 0.00, 0.13, 0.10, 0.16    |
| HSL         | 347°, 24%, 78%            |
| HSV         | 347°, 13%, 84%            |
| XYZ         | 54.5139, 53.0697, 57.2395 |
| YIQ         | 194.7570, 14.1660, 7.5900 |

# Conversions

## Conversions Part 2

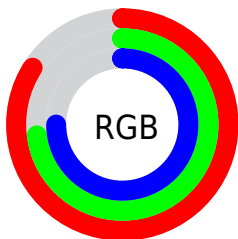
| Format                              | Color                         |
|-------------------------------------|-------------------------------|
| R <sub>Y</sub> B                    | 213, 186, 192                 |
| Decimal                             | 14006976                      |
| CIE Lab                             | 77.92, 10.61, 0.51            |
| CIE LCh                             | 78, 10.627, 2.752             |
| Yxy                                 | 53.0697, 0.3307,<br>0.3220    |
| Android<br>(android.graphics.Color) | 4292197056<br>(0xFFD5BAC0)    |
| YUV                                 | 194.7570, -1.3592,<br>15.9991 |
| Hunter-Lab                          | 72.8490, 6.0884,<br>4.4085    |

# Details

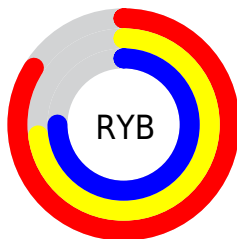
The Hex color **D5BAC0** is a light color, and the websafe version is hex **CCCCCC**. A complement of this color would be **BAD5CF**, and the grayscale version is **C3C3C3**.

A 20% lighter version of the original color is **FFF2F8**, and **9E858B** is the 20% darker color. If you saturate the color by 10%, you get **D5A5AF**, and if you desaturate by 10%, it is **D5CFD1**.

# Distribution



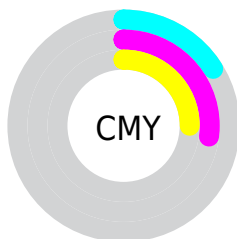
- Red (84%)
- Green (73%)
- Blue (75%)



- Red (84%)
- Yellow (73%)
- Blue (75%)



- Cyan (0%)
- Magenta (13%)
- Yellow (10%)
- Black (16%)



- Cyan (16%)
- Magenta (27%)
- Yellow (25%)

# Brightness & Saturation Gradients

These gradients show how the Hex color D5BAC0 changes by changing the brightness by 10 percent. The first figure shows a shift by +10% for each color and the second figure -10%.

Similar to the brightness gradients but the following saturation gradients show a change of the Hex color D5BAC0 by changing the saturation by 10% instead.



 D5BAC0

FFFFFF

 FFF2F8

 D5BAC0

 B99FA5

 9E858B

 846C71

 6B5359

 523C41

 3B262B

 251217

 040000

 000000

 D5BAC0

 D5BAC0

 D5A5AF

 D5CFD1

 D58F9F

 D5E5E1

 D57A8E

 D5FAF2

 D5657E

 D5FFFF

 D54F6D

 D53A5D

 D5254C

 D5103B

 D5002F

# Harmonies

## Analogous

The Analogous color harmony consists of three colors that are next to each other on the color wheel.



CFBBCA



D5BAC0



D6BBB6

# Triad

The Triadic color harmony groups three colors that are evenly spaced from another and form a triangle on the color wheel.



D5BAC0



BDC3B0



ADC4D2

# Complementary

The Complementary color scheme is a pair of colors which are on the opposite of each other on the color wheel.



D5BAC0



BAD5CF

# Split Complementary

Split-complementary colors differ from the complementary color scheme. The scheme consists of three colors, the original color and two neighbors of the complement color.



A8C6CB



D5BAC0



B2C6B7

# Square

The Square scheme is like the rectangle color scheme, but the four colors are evenly spaced on the color wheel.



D5BAC0



C8C0AD



AAC7C1



B8C1D4

# Rectangle

The Rectangle color scheme consists of four colors that form a rectangle on the color wheel.



D5BAC0



D3BCB1



AAC7C1



ABC5D0



# Sweetspot

The Sweet Spot groups the original color and five complimentary colors.



D5BAC0



FFF5F7



CFBAD5



80797B



000000



808080



# Same Dimension

The Same Dimension uses a secret algorithm to generate beautiful new colors.



D5BAC0



FFD9E1



D5C1BA



6B6063



AB0026



2B000A



# Inverse Universe

The Inverse Universe completely reimagines the original color for something new.



D5BAC0



FFD9E1



BACED5



6B6063



AB0026

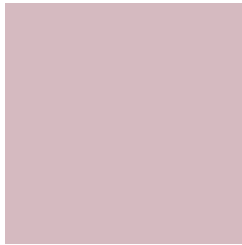


2B000A



# Previews

## White Background



This preview shows how the Hex color D5BAC0 looks on a white background.

## Color Contrast Check

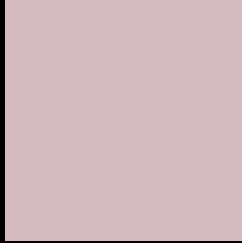
Large Text (above 18pt) WCAG AA × Fail

Any Text WCAG AA × Fail

Large Text (above 18pt) WCAG AAA × Fail

Any Text WCAG AAA × Fail

# Black Background



This preview shows how the Hex color D5BAC0 looks on a black background.

## Color Contrast Check

Large Text (above 18pt) WCAG AA ✓ Pass

Any Text WCAG AA ✓ Pass

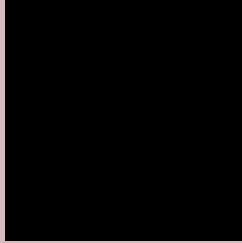
Large Text (above 18pt) WCAG AAA ✓ Pass

Any Text WCAG AAA ✓ Pass

If you want to check with other color combinations, try the [Color Contrast Checker](#).



## Hex D5BAC0 Background



This preview shows how black text looks on a background with the Hex color D5BAC0.

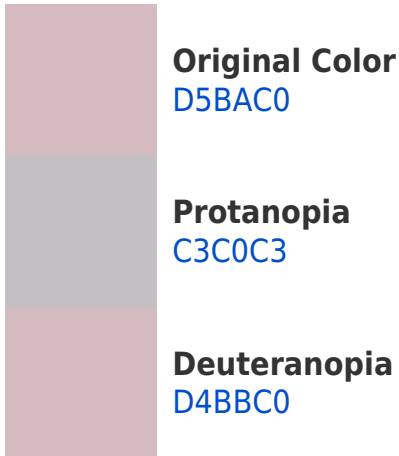


This preview shows how white text looks on a background with the Hex color D5BAC0.

# Color Blindness Simulation

Color vision deficiency is a very complex topic, and I could not describe the different causes any better than Wikipedia does, so if you want to learn more, you should check out their [article about color blindness](#).

## Dichromacy





**Tritanopia**  
D6B9C7

# Trichromacy



**Original Color**  
D5BAC0

**Protanomaly**  
CABEC2

**Deuteranomaly**  
D4BBC0

**Tritanomaly**  
D6B9C4

# Monochromacy



**Original Color**  
D5BAC0

**Achromatopsia**  
C3C3C3

**Achromatomaly**  
CAC0C2

# CSS Examples

## Text

The CSS property to change the color of the text to Hex D5BAC0 is called "color". The color property can be set on classes, ids or directly on the HTML element.

This example shows how text in the color #D5BAC0 looks like.

```
.text, #text, p{  
    color:#D5BAC0  
}
```

If you want to add a text shadow in that color use the text-shadow property, you can generate a text shadow directly with our [CSS Text Shadow Generator](#).

Here you see how black text with a 4 pixel #D5BAC0 colored shadow looks like.

```
.shadow{ text-shadow: 4px 4px 2px #D5BAC0  
}
```

## Border

The CSS property to change the border of an element to Hex D5BAC0 is called "border". The border property can be set on classes, ids or directly on the HTML element.

This example shows the color as border, it can be applied via the CSS property "border" or "border-color".

```
.border, #border, table{ border:4px solid  
#D5BAC0 }
```

If only the border color should be changed use the property `border-color`.

```
.border{ border-color:#D5BAC0 }
```

If you want to add a box shadow in that color use:

Here you see how a box with a 4 pixel #D5BAC0 colored shadow looks like.

```
.boxshadow{ -moz-box-shadow:4px 4px 4px  
4px #D5BAC0; -webkit-box-shadow:4px 4px  
4px 4px #D5BAC0; box-shadow:4px 4px 4px  
4px #D5BAC0 }
```

# Background

The CSS property to change the background color of an element to Hex D5BAC0 is called "background". The background property can be set on classes, ids or directly on the HTML element.

```
.background, #background, body{  
background:#D5BAC0 }
```

If only the background color should be changed can be used:

```
.background{ background-color:#D5BAC0 }
```

This example shows the color as background, it is applied via the CSS property "background".

To optimize and compress your CSS code, you can use our [online CSS compressor and optimizer](#) based on csstidy. If you want to create a linear or radial gradient as background or border, check our [CSS Gradient Generator](#).



Hey! You found this booklet interesting? Support Converting Colors with the new Membership Option!

The pro membership hides all ads, plus gives you double the colors in the color bucket, and more awesome pro features!

**[Learn more, Memberships starting at \\$2.50/m!](#)**

**Follow me  
on Twitter!**

@ConvertingColor