

# Converting Colors

Hex(D5BEC0)

Have a look what the booklet for  
Hex(D5BEC0) contains.

<b>Hex(D5BEC0)</b> .....	3
<i><b>Conversions</b></i> .....	4
<i><b>Details</b></i> .....	6
<i><b>Harmonies</b></i> .....	11
<i><b>Previews</b></i> .....	23
<i><b>Color Blindness Simulation</b></i> .....	26
<i><b>CSS Examples</b></i> .....	29

# **Color**

**Hex(D5BEC0)**

# Conversions

## Conversions Part 1

Format	Color
Hex	D5BEC0
RGB	213, 190, 192
RGB Percent	84%, 75%, 75%
CMY	0.1647, 0.2549, 0.2471
CMYK	0.00, 0.11, 0.10, 0.16
HSL	355°, 21%, 79%
HSV	355°, 11%, 84%
XYZ	55.3685, 54.7788, 57.5243
YIQ	197.1050, 13.0660, 5.4980

# Conversions

## Conversions Part 2

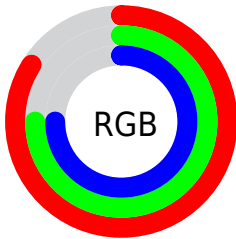
Format	Color
R <sub>Y</sub> B	213, 190, 192
Decimal	14008000
CIE Lab	78.91, 8.47, 1.96
CIE LCh	79, 8.698, 13.041
Yxy	54.7788, 0.3302, 0.3267
Android (android.graphics.Color)	4292198080 (0xFFD5BEC0)
YUV	197.1050, -2.5168, 13.9399
Hunter-Lab	74.0127, 4.0125, 5.7274

# Details

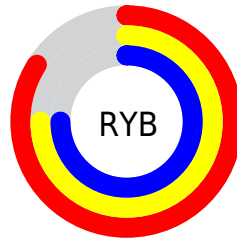
The Hex color **D5BEC0** is a light color, and the websafe version is hex **CCCCCC**. A complement of this color would be **BED5D3**, and the grayscale version is **C5C5C5**.

A 20% lighter version of the original color is **FFF6F8**, and **9E898B** is the 20% darker color. If you saturate the color by 10%, you get **D5A9AD**, and if you desaturate by 10%, it is **D5D3D3**.

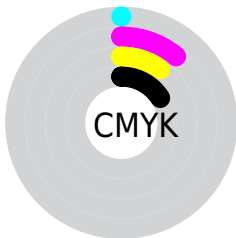
# Distribution



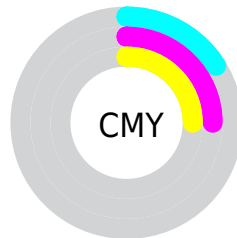
- Red (84%)
- Green (75%)
- Blue (75%)



- Red (84%)
- Yellow (75%)
- Blue (75%)



- Cyan (0%)
- Magenta (11%)
- Yellow (10%)
- Black (16%)



- Cyan (16%)
- Magenta (25%)
- Yellow (25%)

# Brightness & Saturation Gradients

These gradients show how the Hex color D5BEC0 changes by changing the brightness by 10 percent. The first figure shows a shift by +10% for each color and the second figure -10%.

Similar to the brightness gradients but the following saturation gradients show a change of the Hex color D5BEC0 by changing the saturation by 10% instead.



 D5BEC0

FFFFFF

 FFF6F8

 D5BEC0

 B9A3A5

 9E898B

 846F71

 6B5759

 524041

 3B2A2B

 251517

 0A0000

 000000

 D5BEC0

 D5BEC0

 D5A9AD

 D5D3D3

 D59399

 D5E9E7

 D57E86

 D5FEFA

 D56972

 D5FFFF

 D5545F

 D53E4B

 D52938

 D51424

 D50013

# Harmonies

## Analogous

The Analogous color harmony consists of three colors that are next to each other on the color wheel.



D1BEC8



D5BEC0



D4BFB9

# Triad

The Triadic color harmony groups three colors that are evenly spaced from another and form a triangle on the color wheel.



D5BEC0



BDC6B7



B6C5D3

# Complementary

The Complementary color scheme is a pair of colors which are on the opposite of each other on the color wheel.



D5BEC0



BED5D3

# Split Complementary

Split-complementary colors differ from the complementary color scheme. The scheme consists of three colors, the original color and two neighbors of the complement color.



B0C7CE



D5BEC0



B5C8BE

# Square

The Square scheme is like the rectangle color scheme, but the four colors are evenly spaced on the color wheel.



D5BEC0



C6C4B4



B0C8C7



BFC3D3

# Rectangle

The Rectangle color scheme consists of four colors that form a rectangle on the color wheel.



D5BEC0



D1C0B5



B0C8C7



B4C6D1

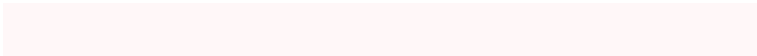


# Sweetspot

The Sweet Spot groups the original color and five complimentary colors.



D5BEC0



FFF7F8



D3BED5



807A7B



000000



808080



# Same Dimension

The Same Dimension uses a secret algorithm to generate beautiful new colors.



D5BEC0



FFDEE1



D5C7BE



6B6061



AB000F



2B0004



# Inverse Universe

The Inverse Universe completely reimagines the original color for something new.



D5BEC0



FFDEE1



BECCD5



6B6061



AB000F

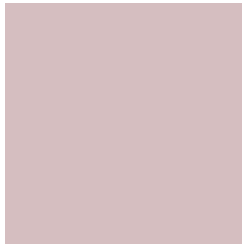


2B0004



# Previews

## White Background



This preview shows how the Hex color D5BEC0 looks on a white background.

## Color Contrast Check

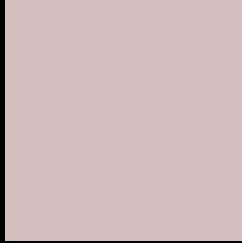
Large Text (above 18pt) WCAG AA × Fail

Any Text WCAG AA × Fail

Large Text (above 18pt) WCAG AAA × Fail

Any Text WCAG AAA × Fail

# Black Background



This preview shows how the Hex color D5BEC0 looks on a black background.

## Color Contrast Check

Large Text (above 18pt) WCAG AA ✓ Pass

Any Text WCAG AA ✓ Pass

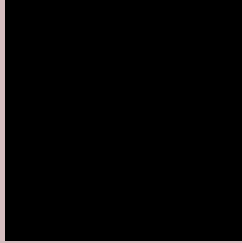
Large Text (above 18pt) WCAG AAA ✓ Pass

Any Text WCAG AAA ✓ Pass

If you want to check with other color combinations, try the [Color Contrast Checker](#).



## Hex D5BEC0 Background



This preview shows how black text looks on a background with the Hex color D5BEC0.



This preview shows how white text looks on a background with the Hex color D5BEC0.

# Color Blindness Simulation

Color vision deficiency is a very complex topic, and I could not describe the different causes any better than Wikipedia does, so if you want to learn more, you should check out their [article about color blindness](#).

## Dichromacy



**Original Color**  
D5BEC0

**Protanopia**  
C7C3C3

**Deuteranopia**  
D7BDC0



**Tritanopia**  
D7BCCB

# Trichromacy



**Original Color**  
D5BEC0

**Protanomaly**  
CCC1C2

**Deuteranomaly**  
D6BDC0

**Tritanomaly**  
D6BDC7

# Monochromacy



**Original Color**  
D5BEC0

**Achromatopsia**  
C5C5C5

**Achromatomaly**  
CBC2C3

# CSS Examples

## Text

The CSS property to change the color of the text to Hex D5BEC0 is called "color". The color property can be set on classes, ids or directly on the HTML element.

This example shows how text in the color #D5BEC0 looks like.

```
.text, #text, p{  
    color:#D5BEC0  
}
```

If you want to add a text shadow in that color use the text-shadow property, you can generate a text shadow directly with our [CSS Text Shadow Generator](#).

Here you see how black text with a 4 pixel #D5BEC0 colored shadow looks like.

```
.shadow{ text-shadow: 4px 4px 2px #D5BEC0  
}
```

## Border

The CSS property to change the border of an element to Hex D5BEC0 is called "border". The border property can be set on classes, ids or directly on the HTML element.

This example shows the color as border, it can be applied via the CSS property "border" or "border-color".

```
.border, #border, table{ border:4px solid  
#D5BEC0 }
```

If only the border color should be changed use the property `border-color`.

```
.border{ border-color:#D5BEC0 }
```

If you want to add a box shadow in that color use:

Here you see how a box with a 4 pixel #D5BEC0 colored shadow looks like.

```
.boxshadow{ -moz-box-shadow:4px 4px 4px  
4px #D5BEC0; -webkit-box-shadow:4px 4px  
4px 4px #D5BEC0; box-shadow:4px 4px 4px  
4px #D5BEC0 }
```

# Background

The CSS property to change the background color of an element to Hex D5BEC0 is called "background". The background property can be set on classes, ids or directly on the HTML element.

```
.background, #background, body{  
background:#D5BEC0 }
```

If only the background color should be changed can be used:

```
.background{ background-color:#D5BEC0 }
```

This example shows the color as background, it is applied via the CSS property "background".

To optimize and compress your CSS code, you can use our [online CSS compressor and optimizer](#) based on csstidy. If you want to create a linear or radial gradient as background or border, check our [CSS Gradient Generator](#).



Hey! You found this booklet interesting? Support Converting Colors with the new Membership Option!

The pro membership hides all ads, plus gives you double the colors in the color bucket, and more awesome pro features!

**[Learn more, Memberships starting at \\$2.50/m!](#)**

**Follow me  
on Twitter!**

@ConvertingColor