

Converting Colors

Hex(D5C2B7)

Have a look what the booklet for
Hex(D5C2B7) contains.

Hex(D5C2B7)	3
<i>Conversions</i>	4
<i>Details</i>	6
<i>Harmonies</i>	11
<i>Previews</i>	23
<i>Color Blindness Simulation</i>	26
<i>CSS Examples</i>	29

Color

Hex(D5C2B7)

Conversions

Conversions Part 1

Format	Color
Hex	D5C2B7
RGB	213, 194, 183
RGB Percent	84%, 76%, 72%
CMY	0.1647, 0.2392, 0.2824
CMYK	0.00, 0.09, 0.14, 0.16
HSL	22°, 26%, 78%
HSV	22°, 14%, 84%
XYZ	55.2796, 56.1486, 52.7240
YIQ	198.4270, 14.8550, 0.6070

Conversions

Conversions Part 2

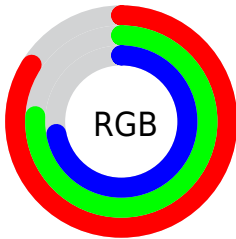
Format	Color
R _Y B	213, 200, 183
Decimal	14009015
CIE Lab	79.70, 4.87, 7.94
CIE LCh	80, 9.317, 58.498
Yxy	56.1486, 0.3368, 0.3421
Android (android.graphics.Color)	4292199095 (0xFFD5C2B7)
YUV	198.4270, -7.6055, 12.7805
Hunter-Lab	74.9324, 0.5525, 10.7350

Details

The Hex color **D5C2B7** is a light color, and the websafe version is hex **CCCCCC**. A complement of this color would be **B7CAD5**, and the grayscale version is **C6C6C6**.

A 20% lighter version of the original color is **FFFAEF**, and **9E8C82** is the 20% darker color. If you saturate the color by 10%, you get **D5B5A2**, and if you desaturate by 10%, it is **D5CFCC**.

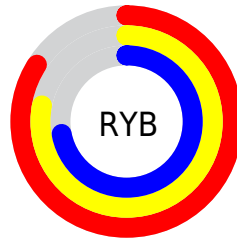
Distribution



Red (84%)

Green (76%)

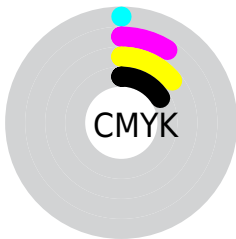
Blue (72%)



Red (84%)

Yellow (78%)

Blue (72%)

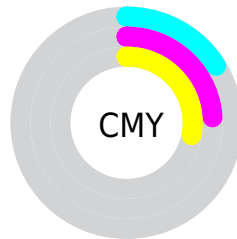


Cyan (0%)

Magenta (9%)

Yellow (14%)

Black (16%)



Cyan (16%)

Magenta (24%)

Yellow (28%)

Brightness & Saturation Gradients

These gradients show how the Hex color D5C2B7 changes by changing the brightness by 10 percent. The first figure shows a shift by +10% for each color and the second figure -10%.

Similar to the brightness gradients but the following saturation gradients show a change of the Hex color D5C2B7 by changing the saturation by 10% instead.

 D5C2B7

 D5C2B7

FFFFFF

 B9A79C

 FFFAEF

 9E8C82

 847369

 6B5A51

 52433A

 3B2D24

 25180F

 090000

 000000

 D5C2B7

 D5C2B7

 D5B5A2

 D5CFCC

 D5A78C

 D5DDE2

 D59A77

 D5EAF7

 D58C62

 D5F8FF

 D57F4D

 D5FFFF

 D57137

 D56422

 D5560D

 D54E00

Harmonies

Analogous

The Analogous color harmony consists of three colors that are next to each other on the color wheel.



D9C0BE



D5C2B7



CDC5B4

Triad

The Triadic color harmony groups three colors that are evenly spaced from another and form a triangle on the color wheel.



D5C2B7



B3CBC5



C7C3D5

Complementary

The Complementary color scheme is a pair of colors which are on the opposite of each other on the color wheel.



D5C2B7



B7CAD5

Split Complementary

Split-complementary colors differ from the complementary color scheme. The scheme consists of three colors, the original color and two neighbors of the complement color.



BCC6D7



D5C2B7



B0CACD

Square

The Square scheme is like the rectangle color scheme, but the four colors are evenly spaced on the color wheel.



D5C2B7



BACABC



B4C9D4



D1C1CF

Rectangle

The Rectangle color scheme consists of four colors that form a rectangle on the color wheel.



D5C2B7



C7C7B5



B4C9D4



C3C4D6

Sweetspot

The Sweet Spot groups the original color and five complimentary colors.



D5C2B7



FFF9F5



D5B7CA



807B79



000000



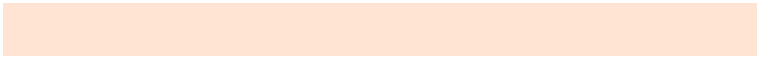
808080

Same Dimension

The Same Dimension uses a secret algorithm to generate beautiful new colors.



D5C2B7



FFE4D4



D5D1B7



6B6460



AB3F00



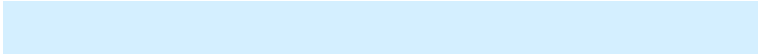
2B1000

Inverse Universe

The Inverse Universe completely reimagines the original color for something new.



B7CAD5



D4EFFF



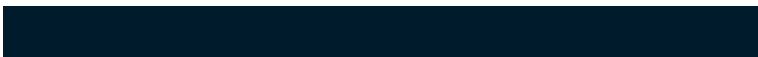
B7BBD5



60676B



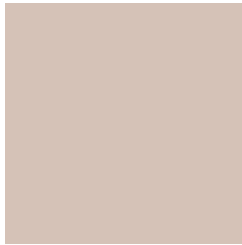
006CAB



001B2B

Previews

White Background



This preview shows how the Hex color D5C2B7 looks on a white background.

Color Contrast Check

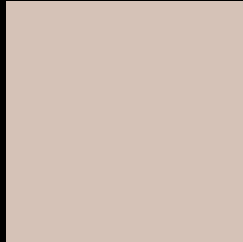
Large Text (above 18pt) WCAG AA × Fail

Any Text WCAG AA × Fail

Large Text (above 18pt) WCAG AAA × Fail

Any Text WCAG AAA × Fail

Black Background



This preview shows how the Hex color D5C2B7 looks on a black background.

Color Contrast Check

Large Text (above 18pt) WCAG AA ✓ Pass

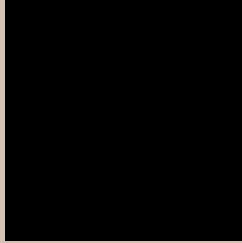
Any Text WCAG AA ✓ Pass

Large Text (above 18pt) WCAG AAA ✓ Pass

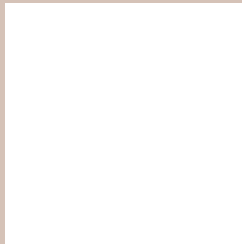
Any Text WCAG AAA ✓ Pass

If you want to check with other color combinations, try the [Color Contrast Checker](#).

Hex D5C2B7 Background



This preview shows how black text looks on a background with the Hex color D5C2B7.

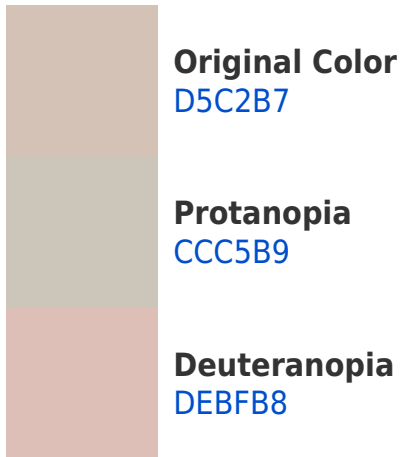


This preview shows how white text looks on a background with the Hex color D5C2B7.

Color Blindness Simulation

Color vision deficiency is a very complex topic, and I could not describe the different causes any better than Wikipedia does, so if you want to learn more, you should check out their [article about color blindness](#).

Dichromacy





Tritanopia
D8BFCE

Trichromacy



Original Color
D5C2B7

Protanomaly
CFC4B8

Deuteranomaly
DBC0B8

Tritanomaly
D7C0C6

Monochromacy



Original Color
D5C2B7

Achromatopsia
C6C6C6

Achromatomaly
CBC5C1

CSS Examples

Text

The CSS property to change the color of the text to Hex D5C2B7 is called "color". The color property can be set on classes, ids or directly on the HTML element.

This example shows how text in the color #D5C2B7 looks like.

```
.text, #text, p{  
    color:#D5C2B7  
}
```

If you want to add a text shadow in that color use the text-shadow property, you can generate a text shadow directly with our [CSS Text Shadow Generator](#).

Here you see how black text with a 4 pixel #D5C2B7 colored shadow looks like.

```
.shadow{ text-shadow: 4px 4px 2px #D5C2B7
}
```

Border

The CSS property to change the border of an element to Hex D5C2B7 is called "border". The border property can be set on classes, ids or directly on the HTML element.

This example shows the color as border, it can be applied via the CSS property "border" or "border-color".

```
.border, #border, table{ border:4px solid
#D5C2B7 }
```

If only the border color should be changed use the property `border-color`.

```
.border{ border-color:#D5C2B7 }
```

If you want to add a box shadow in that color use:

Here you see how a box with a 4 pixel #D5C2B7 colored shadow looks like.

```
.boxshadow{ -moz-box-shadow:4px 4px 4px  
4px #D5C2B7; -webkit-box-shadow:4px 4px  
4px 4px #D5C2B7; box-shadow:4px 4px 4px  
4px #D5C2B7 }
```

Background

The CSS property to change the background color of an element to Hex D5C2B7 is called "background". The background property can be set on classes, ids or directly on the HTML element.

```
.background, #background, body{  
background:#D5C2B7 }
```

If only the background color should be changed can be used:

```
.background{ background-color:#D5C2B7 }
```

This example shows the color as background, it is applied via the CSS property "background".

To optimize and compress your CSS code, you can use our [online CSS compressor and optimizer](#) based on csstidy. If you want to create a linear or radial gradient as background or border, check our [CSS Gradient Generator](#).

Hey! You found this booklet interesting? Support Converting Colors with the new Membership Option!

The pro membership hides all ads, plus gives you double the colors in the color bucket, and more awesome pro features!

[Learn more, Memberships starting at \\$2.50/m!](#)

**Follow me
on Twitter!**

@ConvertingColor