

# Converting Colors

Hex(D5C3C3)

Have a look what the booklet for  
Hex(D5C3C3) contains.

<b>Hex(D5C3C3)</b> .....	3
<i><b>Conversions</b></i> .....	4
<i><b>Details</b></i> .....	6
<i><b>Harmonies</b></i> .....	11
<i><b>Previews</b></i> .....	23
<i><b>Color Blindness Simulation</b></i> .....	26
<i><b>CSS Examples</b></i> .....	29

# **Color**

**Hex(D5C3C3)**

# Conversions

## Conversions Part 1

Format	Color
Hex	D5C3C3
RGB	213, 195, 195
RGB Percent	84%, 76%, 76%
CMY	0.1647, 0.2353, 0.2353
CMYK	0.00, 0.08, 0.08, 0.16
HSL	0°, 18%, 80%
HSV	0°, 8%, 84%
XYZ	56.8060, 57.1165, 59.6603
YIQ	200.3820, 10.7280, 3.8160

# Conversions

## Conversions Part 2

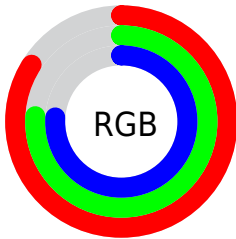
<b>Format</b>	<b>Color</b>
R <sub>Y</sub> B	213, 195, 195
Decimal	14009283
CIE Lab	80.25, 6.32, 2.28
CIE LCh	80, 6.718, 19.852
Yxy	57.1165, 0.3273, 0.3290
Android (android.graphics.Color)	4292199363 (0xFFD5C3C3)
YUV	200.3820, -2.6533, 11.0660
Hunter-Lab	75.5754, 1.9118, 6.0984

# Details

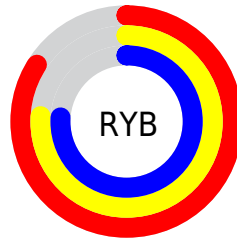
The Hex color **D5C3C3** is a light color, and the websafe version is hex **CCCCCC**. A complement of this color would be **C3D5D5**, and the grayscale version is **C8C8C8**.

A 20% lighter version of the original color is **FFFCFC**, and **9E8D8D** is the 20% darker color. If you saturate the color by 10%, you get **D5AEAE**, and if you desaturate by 10%, it is **D5D8D8**.

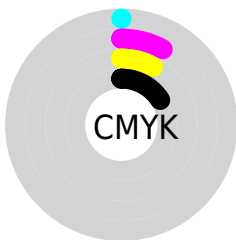
# Distribution



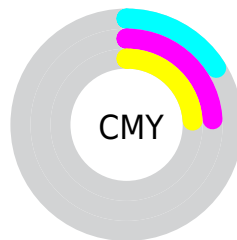
- Red (84%)
- Green (76%)
- Blue (76%)



- Red (84%)
- Yellow (76%)
- Blue (76%)



- Cyan (0%)
- Magenta (8%)
- Yellow (8%)
- Black (16%)



- Cyan (16%)
- Magenta (24%)
- Yellow (24%)

# Brightness & Saturation Gradients

These gradients show how the Hex color D5C3C3 changes by changing the brightness by 10 percent. The first figure shows a shift by +10% for each color and the second figure -10%.

Similar to the brightness gradients but the following saturation gradients show a change of the Hex color D5C3C3 by changing the saturation by 10% instead.



 D5C3C3

 D5C3C3

FFFFFF

 B9A8A8

 FFFCFC

 9E8D8D


 847474

 6B5B5B

 524444

 3B2E2E

 251919

 110000

 000000

 D5C3C3

 D5C3C3

 D5AEAE

 D5D8D8

 D59898

 D5EEEE

 D58383

 D5FFFF

 D56E6E

 D55858

 D54343

 D52E2E

 D51919

 D50303

# Harmonies

## Analogous

The Analogous color harmony consists of three colors that are next to each other on the color wheel.



D3C3C9



D5C3C3



D3C4BE

# Triad

The Triadic color harmony groups three colors that are evenly spaced from another and form a triangle on the color wheel.



D5C3C3



C1CABF



BEC8D3

# Complementary

The Complementary color scheme is a pair of colors which are on the opposite of each other on the color wheel.



D5C3C3



C3D5D5

# Split Complementary

Split-complementary colors differ from the complementary color scheme. The scheme consists of three colors, the original color and two neighbors of the complement color.



B9CAD0



D5C3C3



BBCBC5

# Square

The Square scheme is like the rectangle color scheme, but the four colors are evenly spaced on the color wheel.



D5C3C3



C8C8BB



B8CBCB



C6C6D3

# Rectangle

The Rectangle color scheme consists of four colors that form a rectangle on the color wheel.



D5C3C3



D1C5BB



B8CBCB



BCC9D3



# Sweetspot

The Sweet Spot groups the original color and five complimentary colors.



D5C3C3



FFF7F7



D5C3D5



807A7A



000000



808080

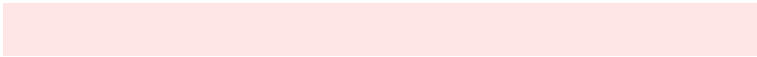


# Same Dimension

The Same Dimension uses a secret algorithm to generate beautiful new colors.



D5C3C3



FFE6E6



D5CCC3



6B6060



AB0000



2B0000



# Inverse Universe

The Inverse Universe completely reimagines the original color for something new.



C3D5D5



E6FFFF



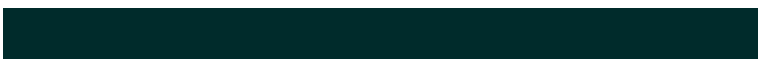
C3CCD5



606B6B



00ABAB

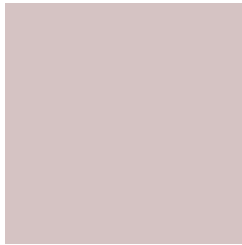


002B2B



# Previews

## White Background



This preview shows how the Hex color D5C3C3 looks on a white background.

## Color Contrast Check

Large Text (above 18pt) WCAG AA × Fail

Any Text WCAG AA × Fail

Large Text (above 18pt) WCAG AAA × Fail

Any Text WCAG AAA × Fail

# Black Background



This preview shows how the Hex color D5C3C3 looks on a black background.

## Color Contrast Check

Large Text (above 18pt) WCAG AA ✓ Pass

Any Text WCAG AA ✓ Pass

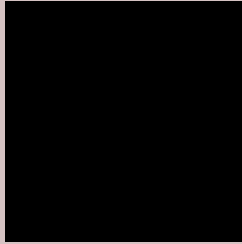
Large Text (above 18pt) WCAG AAA ✓ Pass

Any Text WCAG AAA ✓ Pass

If you want to check with other color combinations, try the [Color Contrast Checker](#).



## Hex D5C3C3 Background



This preview shows how black text looks on a background with the Hex color D5C3C3.

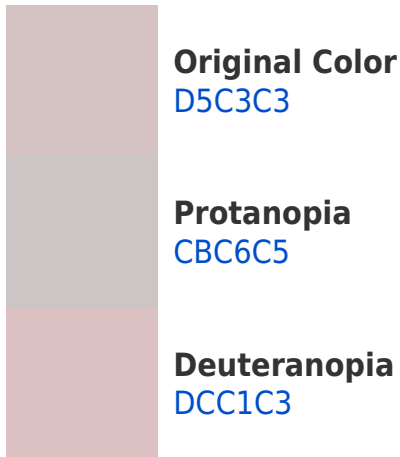


This preview shows how white text looks on a background with the Hex color D5C3C3.

# Color Blindness Simulation

Color vision deficiency is a very complex topic, and I could not describe the different causes any better than Wikipedia does, so if you want to learn more, you should check out their [article about color blindness](#).

## Dichromacy





**Tritanopia**  
D7C1D0

# Trichromacy



**Original Color**  
D5C3C3

**Protanomaly**  
CFC5C4

**Deuteranomaly**  
D9C2C3

**Tritanomaly**  
D6C2CB

# Monochromacy



**Original Color**  
D5C3C3

**Achromatopsia**  
C8C8C8

**Achromatomaly**  
CDC6C6

# CSS Examples

## Text

The CSS property to change the color of the text to Hex D5C3C3 is called "color". The color property can be set on classes, ids or directly on the HTML element.

This example shows how text in the color #D5C3C3 looks like.

```
.text, #text, p{  
    color:#D5C3C3  
}
```

If you want to add a text shadow in that color use the text-shadow property, you can generate a text shadow directly with our [CSS Text Shadow Generator](#).

Here you see how black text with a 4 pixel #D5C3C3 colored shadow looks like.

```
.shadow{ text-shadow: 4px 4px 2px #D5C3C3
}
```

## Border

The CSS property to change the border of an element to Hex D5C3C3 is called "border". The border property can be set on classes, ids or directly on the HTML element.

This example shows the color as border, it can be applied via the CSS property "border" or "border-color".

```
.border, #border, table{ border:4px solid
#D5C3C3 }
```

If only the border color should be changed use the property `border-color`.

```
.border{ border-color:#D5C3C3 }
```

If you want to add a box shadow in that color use:

Here you see how a box with a 4 pixel #D5C3C3 colored shadow looks like.

```
.boxshadow{ -moz-box-shadow:4px 4px 4px  
4px #D5C3C3; -webkit-box-shadow:4px 4px  
4px 4px #D5C3C3; box-shadow:4px 4px 4px  
4px #D5C3C3 }
```

# Background

The CSS property to change the background color of an element to Hex D5C3C3 is called "background". The background property can be set on classes, ids or directly on the HTML element.

```
.background, #background, body{  
background:#D5C3C3 }
```

If only the background color should be changed can be used:

```
.background{ background-color:#D5C3C3 }
```

This example shows the color as background, it is applied via the CSS property "background".

To optimize and compress your CSS code, you can use our [online CSS compressor and optimizer](#) based on csstidy. If you want to create a linear or radial gradient as background or border, check our [CSS Gradient Generator](#).



Hey! You found this booklet interesting? Support Converting Colors with the new Membership Option!

The pro membership hides all ads, plus gives you double the colors in the color bucket, and more awesome pro features!

**[Learn more, Memberships starting at \\$2.50/m!](#)**

**Follow me  
on Twitter!**

@ConvertingColor