

Converting Colors

Hex(D5C4CC)

Have a look what the booklet for
Hex(D5C4CC) contains.

Hex(D5C4CC)	3
<i>Conversions</i>	4
<i>Details</i>	6
<i>Harmonies</i>	11
<i>Previews</i>	23
<i>Color Blindness Simulation</i>	26
<i>CSS Examples</i>	29

Color

Hex(D5C4CC)

Conversions

Conversions Part 1

Format	Color
Hex	D5C4CC
RGB	213, 196, 204
RGB Percent	84%, 77%, 80%
CMY	0.1647, 0.2314, 0.2000
CMYK	0.00, 0.08, 0.04, 0.16
HSL	332°, 17%, 80%
HSV	332°, 8%, 84%
XYZ	58.0796, 57.9856, 65.2580
YIQ	201.9950, 7.5640, 6.0920

Conversions

Conversions Part 2

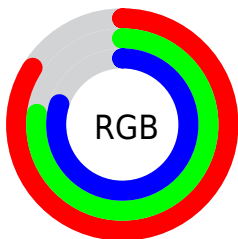
Format	Color
R _Y B	213, 196, 204
Decimal	14009548
CIE Lab	80.73, 7.35, -1.85
CIE LCh	81, 7.578, 345.889
Yxy	57.9856, 0.3203, 0.3198
Android (android.graphics.Color)	4292199628 (0xFFD5C4CC)
YUV	201.9950, 0.9885, 9.6514
Hunter-Lab	76.1483, 2.8854, 2.4931

Details

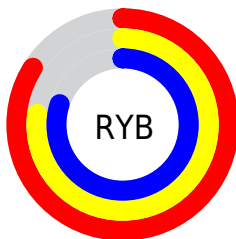
The Hex color **D5C4CC** is a light color, and the websafe version is hex **CCCCCC**. A complement of this color would be **C4D5CD**, and the grayscale version is **CACACA**.

A 20% lighter version of the original color is **FFFDFF**, and **9E8E96** is the 20% darker color. If you saturate the color by 10%, you get **D5AFC1**, and if you desaturate by 10%, it is **D5D9D7**.

Distribution



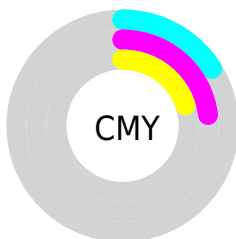
- Red (84%)
- Green (77%)
- Blue (80%)



- Red (84%)
- Yellow (77%)
- Blue (80%)



- Cyan (0%)
- Magenta (8%)
- Yellow (4%)
- Black (16%)



- Cyan (16%)
- Magenta (23%)
- Yellow (20%)

Brightness & Saturation Gradients

These gradients show how the Hex color D5C4CC changes by changing the brightness by 10 percent. The first figure shows a shift by +10% for each color and the second figure -10%.

Similar to the brightness gradients but the following saturation gradients show a change of the Hex color D5C4CC by changing the saturation by 10% instead.

 D5C4CC

 D5C4CC

FFFFFF

 B9A9B1

 FFFDFD

 9E8E96

 84757C

 6B5C63

 53454B

 3B2E35

 261920

 120007

 000000

 D5C4CC

 D5C4CC

 D5AFC1

 D5D9D7

 D599B5

 D5EFE3

 D584AA

 D5FFEE

 D56F9F

 D5FFF9

 D55A94

 D5FFFF

 D54488

 D52F7D

 D51A72

 D50467

Harmonies

Analogous

The Analogous color harmony consists of three colors that are next to each other on the color wheel.



CEC5D2



D5C4CC



D8C4C5

Triad

The Triadic color harmony groups three colors that are evenly spaced from another and form a triangle on the color wheel.



D5C4CC



CAC9BB



B8CCD2

Complementary

The Complementary color scheme is a pair of colors which are on the opposite of each other on the color wheel.



D5C4CC



C4D5CD

Split Complementary

Split-complementary colors differ from the complementary color scheme. The scheme consists of three colors, the original color and two neighbors of the complement color.



B7CDCC



D5C4CC



C2CBBE

Square

The Square scheme is like the rectangle color scheme, but the four colors are evenly spaced on the color wheel.



D5C4CC



D2C7BB



BBCCC5



BECAD6

Rectangle

The Rectangle color scheme consists of four colors that form a rectangle on the color wheel.



D5C4CC



D8C4C0



BBCCC5



B7CCD0

Sweetspot

The Sweet Spot groups the original color and five complimentary colors.



D5C4CC



FFFAFC



CDC4D5



807D7E



000000



808080

Same Dimension

The Same Dimension uses a secret algorithm to generate beautiful new colors.



D5C4CC



FFE6F2



D5C4C4



6B6065



AB0050



2B0014

Inverse Universe

The Inverse Universe completely reimagines the original color for something new.



D5C4CC



FFE6F2



C4D5D5



6B6065



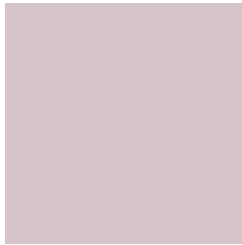
AB0050



2B0014

Previews

White Background



This preview shows how the Hex color D5C4CC looks on a white background.

Color Contrast Check

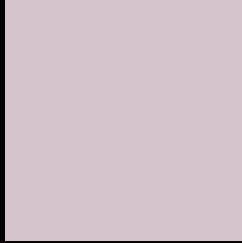
Large Text (above 18pt) WCAG AA × Fail

Any Text WCAG AA × Fail

Large Text (above 18pt) WCAG AAA × Fail

Any Text WCAG AAA × Fail

Black Background



This preview shows how the Hex color D5C4CC looks on a black background.

Color Contrast Check

Large Text (above 18pt) WCAG AA ✓ Pass

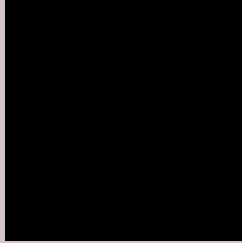
Any Text WCAG AA ✓ Pass

Large Text (above 18pt) WCAG AAA ✓ Pass

Any Text WCAG AAA ✓ Pass

If you want to check with other color combinations, try the [Color Contrast Checker](#).

Hex D5C4CC Background



This preview shows how black text looks on a background with the Hex color D5C4CC.

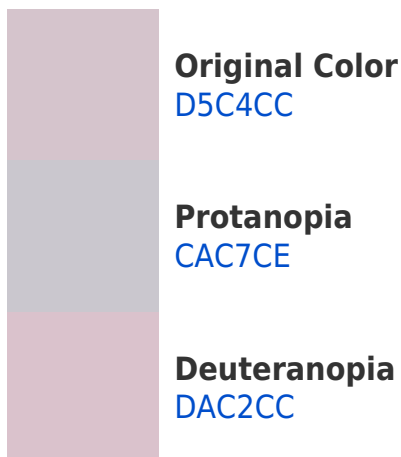


This preview shows how white text looks on a background with the Hex color D5C4CC.

Color Blindness Simulation

Color vision deficiency is a very complex topic, and I could not describe the different causes any better than Wikipedia does, so if you want to learn more, you should check out their [article about color blindness](#).

Dichromacy





Tritanopia
D6C3D2

Trichromacy



Original Color
D5C4CC

Protanomaly
CEC6CD

Deuteranomaly
D8C3CC

Tritanomaly
D6C3D0

Monochromacy



Original Color
D5C4CC

Achromatopsia
CACACA

Achromatomaly
CEC8CB

CSS Examples

Text

The CSS property to change the color of the text to Hex D5C4CC is called "color". The color property can be set on classes, ids or directly on the HTML element.

This example shows how text in the color #D5C4CC looks like.

```
.text, #text, p{  
    color:#D5C4CC  
}
```

If you want to add a text shadow in that color use the text-shadow property, you can generate a text shadow directly with our [CSS Text Shadow Generator](#).

Here you see how black text with a 4 pixel #D5C4CC colored shadow looks like.

```
.shadow{ text-shadow: 4px 4px 2px #D5C4CC  
}
```

Border

The CSS property to change the border of an element to Hex D5C4CC is called "border". The border property can be set on classes, ids or directly on the HTML element.

This example shows the color as border, it can be applied via the CSS property "border" or "border-color".

```
.border, #border, table{ border:4px solid  
#D5C4CC }
```

If only the border color should be changed use the property `border-color`.

```
.border{ border-color:#D5C4CC }
```

If you want to add a box shadow in that color use:

Here you see how a box with a 4 pixel #D5C4CC colored shadow looks like.

```
.boxshadow{ -moz-box-shadow:4px 4px 4px  
4px #D5C4CC; -webkit-box-shadow:4px 4px  
4px 4px #D5C4CC; box-shadow:4px 4px 4px  
4px #D5C4CC }
```

Background

The CSS property to change the background color of an element to Hex D5C4CC is called "background". The background property can be set on classes, ids or directly on the HTML element.

```
.background, #background, body{  
background:#D5C4CC }
```

If only the background color should be changed can be used:

```
.background{ background-color:#D5C4CC }
```

This example shows the color as background, it is applied via the CSS property "background".

To optimize and compress your CSS code, you can use our [online CSS compressor and optimizer](#) based on csstidy. If you want to create a linear or radial gradient as background or border, check our [CSS Gradient Generator](#).

Hey! You found this booklet interesting? Support Converting Colors with the new Membership Option!

The pro membership hides all ads, plus gives you double the colors in the color bucket, and more awesome pro features!

[Learn more, Memberships starting at \\$2.50/m!](#)

**Follow me
on Twitter!**

@ConvertingColor