

Converting Colors

Hex(D6336D)

Have a look what the booklet for
Hex(D6336D) contains.

Hex(D6336D)	3
<i>Conversions</i>	4
<i>Details</i>	6
<i>Harmonies</i>	11
<i>Previews</i>	23
<i>Color Blindness Simulation</i>	26
<i>CSS Examples</i>	29

Color

Hex(D6336D)

Conversions

Conversions Part 1

Format	Color
Hex	D6336D
RGB	214, 51, 109
RGB Percent	84%, 20%, 43%
CMY	0.1608, 0.8000, 0.5725
CMYK	0.00, 0.76, 0.49, 0.16
HSL	339°, 67%, 52%
HSV	339°, 76%, 84%
XYZ	31.6757, 17.7679, 16.2281
YIQ	106.3490, 78.5300, 52.5940

Conversions

Conversions Part 2

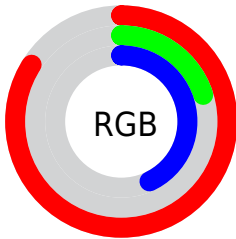
Format	Color
R_{YB}	214, 51, 109
Decimal	14037869
CIE _{Lab}	49.21, 65.56, 6.40
CIE _{LCh}	49, 65.876, 5.573
Yxy	17.7679, 0.4823, 0.2706
Android (android.graphics.Color)	4292227949 (0xFFD6336D)
YUV	106.3490, 1.3069, 94.4099
Hunter-Lab	42.1520, 60.3702, 6.6804

Details

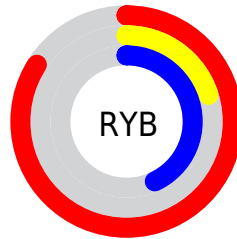
The Hex color **D6336D** is a dark color, and the websafe version is hex **CC3366**. The color can be described as dark muted rose. A complement of this color would be **33D69C**, and the grayscale version is **6A6A6A**.

A 20% lighter version of the original color is **FF70A0**, and **99003E** is the 20% darker color. If you saturate the color by 10%, you get **D61E5F**, and if you desaturate by 10%, it is **D6487B**.

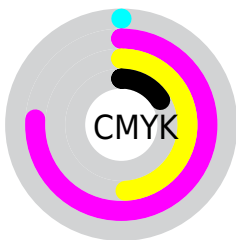
Distribution



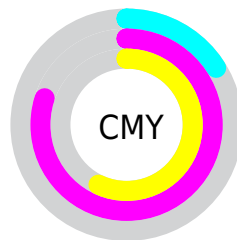
- Red (84%)
- Green (20%)
- Blue (43%)



- Red (84%)
- Yellow (20%)
- Blue (43%)



- Cyan (0%)
- Magenta (76%)
- Yellow (49%)
- Black (16%)



- Cyan (16%)
- Magenta (80%)
- Yellow (57%)

Brightness & Saturation Gradients

These gradients show how the Hex color D6336D changes by changing the brightness by 10 percent. The first figure shows a shift by +10% for each color and the second figure -10%.

Similar to the brightness gradients but the following saturation gradients show a change of the Hex color D6336D by changing the saturation by 10% instead.

 D6336D

 D6336D

FFFFFF

 B70155

 FF70A0

 99003E

 FF8DBB

 7B0029

 FFAAD7

 5E0014

 FFC7F3

 430003

 FFE4FF

 210001

 000000

 D6336D

 D6336D

 D61E5F

 D6487B

 D60851

 D65E89

 D6004C

 D67396

 D689A4

 D69EB2

 D6B3C0

 D6C9CD

 D6DEDB

 D6F4E9

Harmonies

Analogous

The Analogous color harmony consists of three colors that are next to each other on the color wheel.



BF43A4



D6336D



CF4537

Triad

The Triadic color harmony groups three colors that are evenly spaced from another and form a triangle on the color wheel.



D6336D



488400



0087DB

Complementary

The Complementary color scheme is a pair of colors which are on the opposite of each other on the color wheel.



D6336D



33D69C

Split Complementary

Split-complementary colors differ from the complementary color scheme. The scheme consists of three colors, the original color and two neighbors of the complement color.



008DB5



D6336D



008B44

Square

The Square scheme is like the rectangle color scheme, but the four colors are evenly spaced on the color wheel.



D6336D



847600



008E7E



0079E5

Rectangle

The Rectangle color scheme consists of four colors that form a rectangle on the color wheel.



D6336D



BD5811



008E7E



008AD1

Sweetspot

The Sweet Spot groups the original color and five complimentary colors.



D6336D



FFC4D9



9A33D6



805C69



000000



808080

Same Dimension

The Same Dimension uses a secret algorithm to generate beautiful new colors.



D6336D



FF176A



D64933



6B6064



AB003D



2B000F

Inverse Universe

The Inverse Universe completely reimagines the original color for something new.



D6336D



FF176A



33C0D6



6B6064



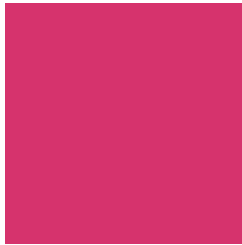
AB003D



2B000F

Previews

White Background



This preview shows how the Hex color D6336D looks on a white background.

Color Contrast Check

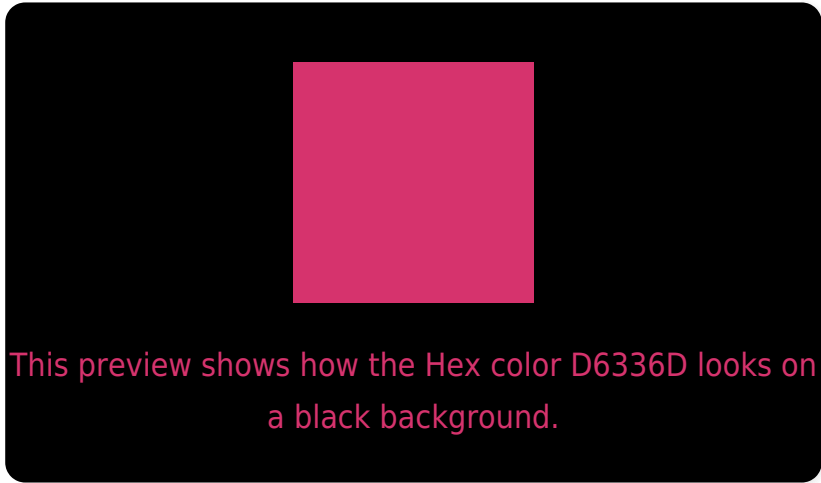
Large Text (above 18pt) WCAG AA ✓ Pass

Any Text WCAG AA ✓ Pass

Large Text (above 18pt) WCAG AAA ✓ Pass

Any Text WCAG AAA × Fail

Black Background



Color Contrast Check

Large Text (above 18pt) WCAG AA ✓ Pass

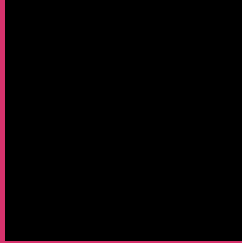
Any Text WCAG AA ✓ Pass

Large Text (above 18pt) WCAG AAA ✓ Pass

Any Text WCAG AAA × Fail

If you want to check with other color combinations, try the [Color Contrast Checker](#).

Hex D6336D Background



This preview shows how black text looks on a background with the Hex color D6336D.



This preview shows how white text looks on a background with the Hex color D6336D.

Color Blindness Simulation

Color vision deficiency is a very complex topic, and I could not describe the different causes any better than Wikipedia does, so if you want to learn more, you should check out their [article about color blindness](#).

Dichromacy



Original Color
D6336D

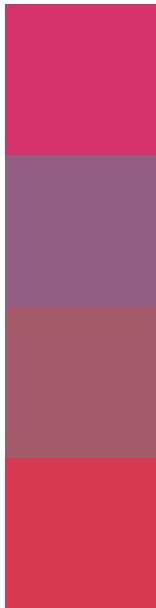
Protanopia
6F7591

Deuteranopia
877165



Tritanopia
D43E41

Trichromacy



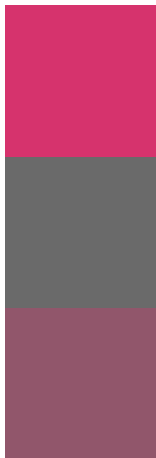
Original Color
D6336D

Protanomaly
945D84

Deuteranomaly
A45A68

Tritanomaly
D53A51

Monochromacy



Original Color
D6336D

Achromatopsia
6A6A6A

Achromatomaly
91566B

CSS Examples

Text

The CSS property to change the color of the text to Hex D6336D is called "color". The color property can be set on classes, ids or directly on the HTML element.

This example shows how text in the color #D6336D looks like.

```
.text, #text, p{  
    color:#D6336D  
}
```

If you want to add a text shadow in that color use the text-shadow property, you can generate a text shadow directly with our [CSS Text Shadow Generator](#).

Here you see how black text with a 4 pixel #D6336D colored shadow looks like.

```
.shadow{ text-shadow: 4px 4px 2px #D6336D
}
```

Border

The CSS property to change the border of an element to Hex D6336D is called "border". The border property can be set on classes, ids or directly on the HTML element.

This example shows the color as border, it can be applied via the CSS property "border" or "border-color".

```
.border, #border, table{ border:4px solid
#D6336D }
```

If only the border color should be changed use the property `border-color`.

```
.border{ border-color:#D6336D }
```

If you want to add a box shadow in that color use:

Here you see how a box with a 4 pixel #D6336D colored shadow looks like.

```
.boxshadow{ -moz-box-shadow:4px 4px 4px  
4px #D6336D; -webkit-box-shadow:4px 4px  
4px 4px #D6336D; box-shadow:4px 4px 4px  
4px #D6336D }
```

Background

The CSS property to change the background color of an element to Hex D6336D is called "background". The background property can be set on classes, ids or directly on the HTML element.

```
.background, #background, body{  
background:#D6336D }
```

If only the background color should be changed can be used:

```
.background{ background-color:#D6336D }
```

This example shows the color as background, it is applied via the CSS property "background".

To optimize and compress your CSS code, you can use our [online CSS compressor and optimizer](#) based on csstidy. If you want to create a linear or radial gradient as background or border, check our [CSS Gradient Generator](#).

Hey! You found this booklet interesting? Support Converting Colors with the new Membership Option!

The pro membership hides all ads, plus gives you double the colors in the color bucket, and more awesome pro features!

[Learn more, Memberships starting at \\$2.50/m!](#)

**Follow me
on Twitter!**

@ConvertingColor