

# Converting Colors

Hex(D63C6F)

Have a look what the booklet for  
Hex(D63C6F) contains.

<b>Hex(D63C6F)</b> .....	3
<i><b>Conversions</b></i> .....	4
<i><b>Details</b></i> .....	6
<i><b>Harmonies</b></i> .....	11
<i><b>Previews</b></i> .....	23
<i><b>Color Blindness Simulation</b></i> .....	26
<i><b>CSS Examples</b></i> .....	29

# Color

Hex(D63C6F)

# Conversions

## Conversions Part 1

<b>Format</b>	<b>Color</b>
Hex	D63C6F
RGB	214, 60, 111
RGB Percent	84%, 24%, 44%
CMY	0.1608, 0.7647, 0.5647
CMYK	0.00, 0.72, 0.48, 0.16
HSL	340°, 65%, 54%
HSV	340°, 72%, 84%
XYZ	32.2167, 18.6756, 16.9457
YIQ	111.8600, 75.4130, 48.5090

# Conversions

## Conversions Part 2

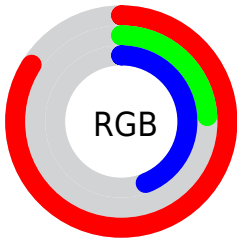
<b>Format</b>	<b>Color</b>
<b>R<sub>YB</sub></b>	214, 60, 111
Decimal	14040175
CIE <sub>Lab</sub>	50.31, 62.82, 6.74
CIE <sub>LCh</sub>	50, 63.180, 6.124
Yxy	18.6756, 0.4749, 0.2753
Android (android.graphics.Color)	4292230255 (0xFFD63C6F)
YUV	111.8600, -0.4240, 89.5768
Hunter-Lab	43.2152, 57.4439, 7.0017

# Details

The Hex color **D63C6F** is a dark color, and the websafe version is hex **CC3366**. The color can be described as dark muted rose. A complement of this color would be **3CD6A3**, and the grayscale version is **707070**.

A 20% lighter version of the original color is **FF77A2**, and **9A0040** is the 20% darker color. If you saturate the color by 10%, you get **D62761**, and if you desaturate by 10%, it is **D6517D**.

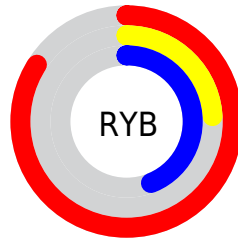
# Distribution



Red (84%)

Green (24%)

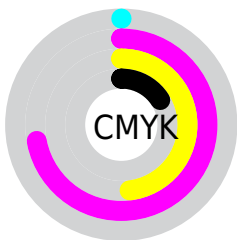
Blue (44%)



Red (84%)

Yellow (24%)

Blue (44%)

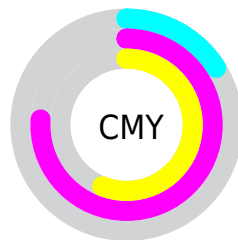


Cyan (0%)

Magenta (72%)

Yellow (48%)

Black (16%)



Cyan (16%)

Magenta (76%)

Yellow (56%)

# Brightness & Saturation Gradients

These gradients show how the Hex color D63C6F changes by changing the brightness by 10 percent. The first figure shows a shift by +10% for each color and the second figure -10%.

Similar to the brightness gradients but the following saturation gradients show a change of the Hex color D63C6F by changing the saturation by 10% instead.



 D63C6F

 D63C6F

FFFFFF

 B81757

 FF77A2

 9A0040

 FF93BD

 7C002A

 FFB0D9

 5E0016

 FFCDF6

 440003

 FFEAFF

 230001

 000000

 D63C6F

 D63C6F

 D62761

 D6517D

 D61152

 D6678C

 D60047

 D67C9A

 D692A8

 D6A7B7

 D6BCC5

 D6D2D3

 D6E7E2

 D6FDF0

# Harmonies

## Analogous

The Analogous color harmony consists of three colors that are next to each other on the color wheel.



C049A4



D63C6F



CF4C3B

# Triad

The Triadic color harmony groups three colors that are evenly spaced from another and form a triangle on the color wheel.



D63C6F



4D860F



0089DA

# Complementary

The Complementary color scheme is a pair of colors which are on the opposite of each other on the color wheel.



D63C6F



3CD6A3

# Split Complementary

Split-complementary colors differ from the complementary color scheme. The scheme consists of three colors, the original color and two neighbors of the complement color.



008FB6



D63C6F



008D49

# Square

The Square scheme is like the rectangle color scheme, but the four colors are evenly spaced on the color wheel.



D63C6F



867900



009082



007BE4

# Rectangle

The Rectangle color scheme consists of four colors that form a rectangle on the color wheel.



D63C6F



BE5C19



009082



008CD1



# Sweetspot

The Sweet Spot groups the original color and five complimentary colors.



D63C6F



FFC7D9



A33CD6



805E69



000000



808080



# Same Dimension

The Same Dimension uses a secret algorithm to generate beautiful new colors.



D63C6F



FF246C



D6563C



6B6064



AB0039



2B000E



# Inverse Universe

The Inverse Universe completely reimagines the original color for something new.



D63C6F



FF246C



3CB CD6



6B6064



AB0039



2B000E



# Previews

## White Background



This preview shows how the Hex color D63C6F looks on a white background.

## Color Contrast Check

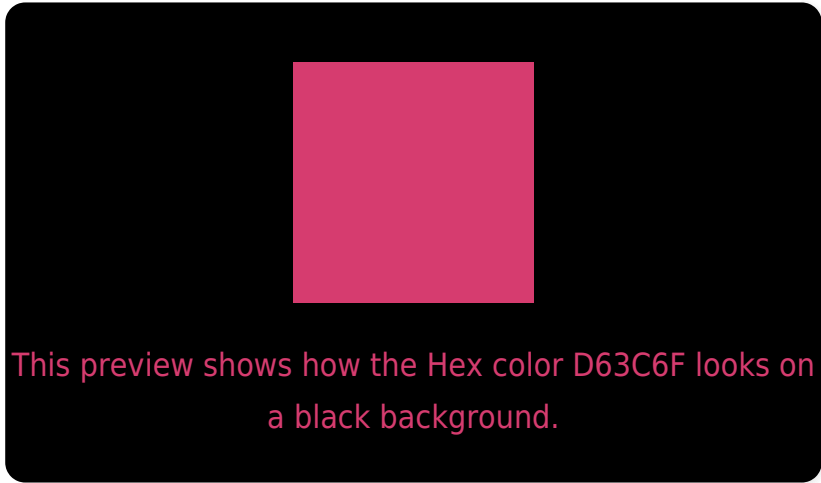
Large Text (above 18pt) WCAG AA ✓ Pass

Any Text WCAG AA × Fail

Large Text (above 18pt) WCAG AAA × Fail

Any Text WCAG AAA × Fail

# Black Background



## Color Contrast Check

Large Text (above 18pt) WCAG AA ✓ Pass

Any Text WCAG AA ✓ Pass

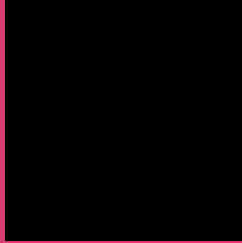
Large Text (above 18pt) WCAG AAA ✓ Pass

Any Text WCAG AAA × Fail

If you want to check with other color combinations, try the [Color Contrast Checker](#).



## Hex D63C6F Background



This preview shows how black text looks on a background with the Hex color D63C6F.

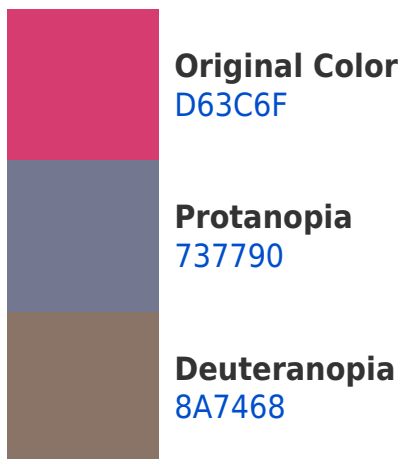



This preview shows how white text looks on a background with the Hex color D63C6F.

# Color Blindness Simulation

Color vision deficiency is a very complex topic, and I could not describe the different causes any better than Wikipedia does, so if you want to learn more, you should check out their [article about color blindness](#).

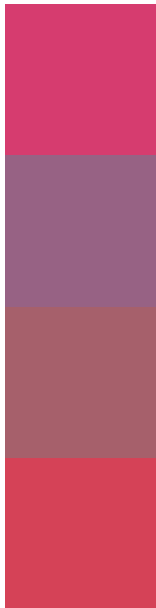
## Dichromacy





**Tritanopia**  
D44549

# Trichromacy



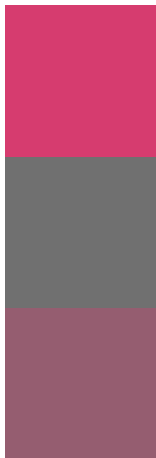
**Original Color**  
D63C6F

**Protanomaly**  
976284

**Deuteranomaly**  
A6606B

**Tritanomaly**  
D54257

# Monochromacy



**Original Color**  
D63C6F

**Achromatopsia**  
707070

**Achromatomaly**  
955D70

# CSS Examples

## Text

The CSS property to change the color of the text to Hex D63C6F is called "color". The color property can be set on classes, ids or directly on the HTML element.

This example shows how text in the color #D63C6F looks like.

```
.text, #text, p{  
    color:#D63C6F  
}
```

If you want to add a text shadow in that color use the text-shadow property, you can generate a text shadow directly with our [CSS Text Shadow Generator](#).

Here you see how black text with a 4 pixel #D63C6F colored shadow looks like.

```
.shadow{ text-shadow: 4px 4px 2px #D63C6F
}
```

## Border

The CSS property to change the border of an element to Hex D63C6F is called "border". The border property can be set on classes, ids or directly on the HTML element.

This example shows the color as border, it can be applied via the CSS property "border" or "border-color".

```
.border, #border, table{ border:4px solid
#D63C6F }
```

If only the border color should be changed use the property `border-color`.

```
.border{ border-color:#D63C6F }
```

If you want to add a box shadow in that color use:

Here you see how a box with a 4 pixel #D63C6F colored shadow looks like.

```
.boxshadow{ -moz-box-shadow:4px 4px 4px  
4px #D63C6F; -webkit-box-shadow:4px 4px  
4px 4px #D63C6F; box-shadow:4px 4px 4px  
4px #D63C6F }
```

# Background

The CSS property to change the background color of an element to Hex D63C6F is called "background". The background property can be set on classes, ids or directly on the HTML element.

```
.background, #background, body{  
background:#D63C6F }
```

If only the background color should be changed can be used:

```
.background{ background-color:#D63C6F }
```

This example shows the color as background, it is applied via the CSS property "background".

To optimize and compress your CSS code, you can use our [online CSS compressor and optimizer](#) based on csstidy. If you want to create a linear or radial gradient as background or border, check our [CSS Gradient Generator](#).



Hey! You found this booklet interesting? Support Converting Colors with the new Membership Option!

The pro membership hides all ads, plus gives you double the colors in the color bucket, and more awesome pro features!

**[Learn more, Memberships starting at \\$2.50/m!](#)**

**Follow me  
on Twitter!**

@ConvertingColor