

# Converting Colors

Hex(D68195)

Have a look what the booklet for  
Hex(D68195) contains.

<b>Hex(D68195)</b> .....	3
<b><i>Conversions</i></b> .....	4
<b><i>Details</i></b> .....	6
<b><i>Harmonies</i></b> .....	11
<b><i>Previews</i></b> .....	23
<b><i>Color Blindness Simulation</i></b> .....	26
<b><i>CSS Examples</i></b> .....	29

# **Color**

**Hex(D68195)**

# Conversions

## Conversions Part 1

Format	Color
Hex	D68195
RGB	214, 129, 149
RGB Percent	84%, 51%, 58%
CMY	0.1608, 0.4941, 0.4157
CMYK	0.00, 0.40, 0.30, 0.16
HSL	346°, 51%, 67%
HSV	346°, 40%, 84%
XYZ	41.0066, 32.1666, 32.4813
YIQ	156.6950, 44.2400, 24.2400

# Conversions

## Conversions Part 2

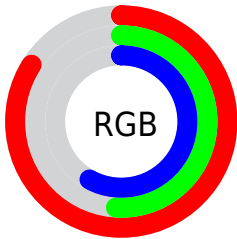
Format	Color
R <sub>Y</sub> B	214, 129, 149
Decimal	14057877
CIE Lab	63.48, 35.22, 3.40
CIE LCh	63, 35.388, 5.513
Yxy	32.1666, 0.3881, 0.3045
Android (android.graphics.Color)	4292247957 (0xFFD68195)
YUV	156.6950, -3.7936, 50.2565
Hunter-Lab	56.7156, 29.8072, 5.7453

# Details

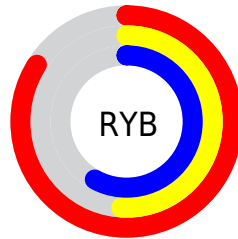
The Hex color **D68195** is a light color, and the websafe version is hex **FF9999**. A complement of this color would be **81D6C2**, and the grayscale version is **9D9D9D**.

A 20% lighter version of the original color is **FFB7CB**, and **9D4E62** is the 20% darker color. If you saturate the color by 10%, you get **D66C85**, and if you desaturate by 10%, it is **D696A5**.

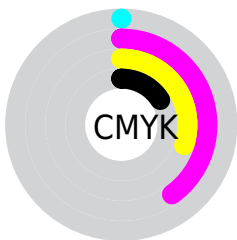
# Distribution



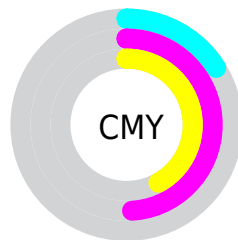
- Red (84%)
- Green (51%)
- Blue (58%)



- Red (84%)
- Yellow (51%)
- Blue (58%)



- Cyan (0%)
- Magenta (40%)
- Yellow (30%)
- Black (16%)



- Cyan (16%)
- Magenta (49%)
- Yellow (42%)

# Brightness & Saturation Gradients

These gradients show how the Hex color D68195 changes by changing the brightness by 10 percent. The first figure shows a shift by +10% for each color and the second figure -10%.

Similar to the brightness gradients but the following saturation gradients show a change of the Hex color D68195 by changing the saturation by 10% instead.



 D68195

 D68195

FFFFFF

 B9677B

 FFB7CB

 9D4E62

 FFD3E7

 82354B

 FFF0FF

 671C34

 4C001F

 340006

 110000

 000000

 D68195

 D68195

 D66C85

 D696A5

 D65674

 D6ACB6

 D64164

 D6C1C6

 D62B54

 D6D7D6

 D61643

 D6ECE7

 D60133

 D6FFF7

 D60032

 D6FFFF

# Harmonies

## Analogous

The Analogous color harmony consists of three colors that are next to each other on the color wheel.



C685B4



D68195



D48577

# Triad

The Triadic color harmony groups three colors that are evenly spaced from another and form a triangle on the color wheel.



D68195



87A365



3CA4D2

# Complementary

The Complementary color scheme is a pair of colors which are on the opposite of each other on the color wheel.



D68195



81D6C2

# Split Complementary

Split-complementary colors differ from the complementary color scheme. The scheme consists of three colors, the original color and two neighbors of the complement color.



04A9BD



D68195



60A87F

# Square

The Square scheme is like the rectangle color scheme, but the four colors are evenly spaced on the color wheel.



D68195



A99A5A



33AB9F



759BD8

# Rectangle

The Rectangle color scheme consists of four colors that form a rectangle on the color wheel.



D68195



CB8B67



33AB9F



28A6CD



# Sweetspot

The Sweet Spot groups the original color and five complimentary colors.



D68195



FFE0E8



C181D6



806E72



000000



808080



# Same Dimension

The Same Dimension uses a secret algorithm to generate beautiful new colors.



D68195



FF85A1



D69681



6B6063



AB0028



2B000A



# Inverse Universe

The Inverse Universe completely reimagines the original color for something new.



D68195



FF85A1



81C1D6



6B6063



AB0028

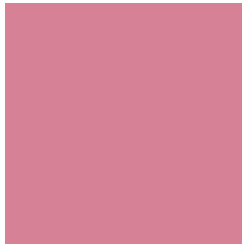


2B000A



# Previews

## White Background



This preview shows how the Hex color D68195 looks on a white background.

## Color Contrast Check

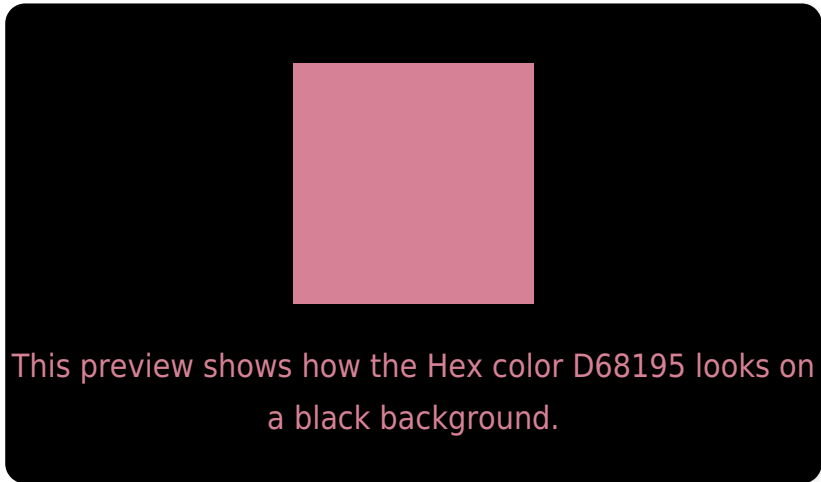
Large Text (above 18pt) WCAG AA × Fail

Any Text WCAG AA × Fail

Large Text (above 18pt) WCAG AAA × Fail

Any Text WCAG AAA × Fail

# Black Background



## Color Contrast Check

Large Text (above 18pt) WCAG AA ✓ Pass

Any Text WCAG AA ✓ Pass

Large Text (above 18pt) WCAG AAA ✓ Pass

Any Text WCAG AAA ✓ Pass

If you want to check with other color combinations, try the [Color Contrast Checker](#).



## Hex D68195 Background



This preview shows how black text looks on a background with the Hex color D68195.

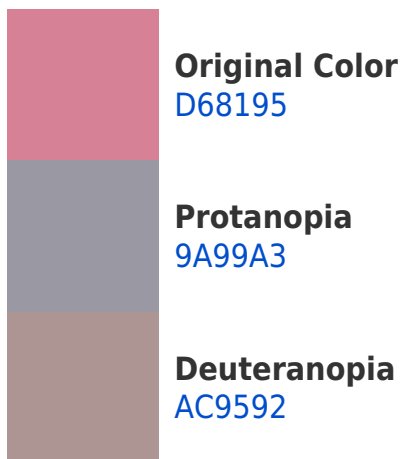



This preview shows how white text looks on a background with the Hex color D68195.

# Color Blindness Simulation

Color vision deficiency is a very complex topic, and I could not describe the different causes any better than Wikipedia does, so if you want to learn more, you should check out their [article about color blindness](#).

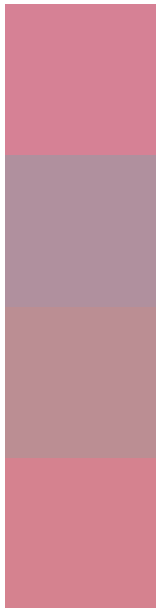
## Dichromacy





**Tritanopia**  
D5828C

# Trichromacy



**Original Color**  
D68195

**Protanomaly**  
B0909E

**Deuteranomaly**  
BB8E93

**Tritanomaly**  
D5828F

# Monochromacy



**Original Color**  
D68195

**Achromatopsia**  
9D9D9D

**Achromatomaly**  
B2939A

# CSS Examples

## Text

The CSS property to change the color of the text to Hex D68195 is called "color". The color property can be set on classes, ids or directly on the HTML element.

This example shows how text in the color #D68195 looks like.

```
.text, #text, p{  
    color:#D68195  
}
```

If you want to add a text shadow in that color use the text-shadow property, you can generate a text shadow directly with our [CSS Text Shadow Generator](#).

Here you see how black text with a 4 pixel #D68195 colored shadow looks like.

```
.shadow{ text-shadow: 4px 4px 2px #D68195
}
```

## Border

The CSS property to change the border of an element to Hex D68195 is called "border". The border property can be set on classes, ids or directly on the HTML element.

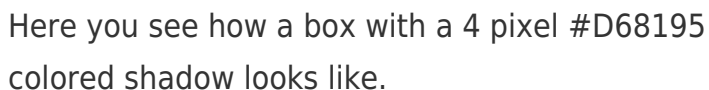
This example shows the color as border, it can be applied via the CSS property "border" or "border-color".

```
.border, #border, table{ border:4px solid
#D68195 }
```

If only the border color should be changed use the property `border-color`.

```
.border{ border-color:#D68195 }
```

If you want to add a box shadow in that color use:



Here you see how a box with a 4 pixel #D68195 colored shadow looks like.

```
.boxshadow{ -moz-box-shadow:4px 4px 4px  
4px #D68195; -webkit-box-shadow:4px 4px  
4px 4px #D68195; box-shadow:4px 4px 4px  
4px #D68195 }
```

# Background

The CSS property to change the background color of an element to Hex D68195 is called "background". The background property can be set on classes, ids or directly on the HTML element.

```
.background, #background, body{  
background:#D68195 }
```

If only the background color should be changed can be used:

```
.background{ background-color:#D68195 }
```

This example shows the color as background, it is applied via the CSS property "background".

To optimize and compress your CSS code, you can use our [online CSS compressor and optimizer](#) based on csstidy. If you want to create a linear or radial gradient as background or border, check our [CSS Gradient Generator](#).



Hey! You found this booklet interesting? Support Converting Colors with the new Membership Option!

The pro membership hides all ads, plus gives you double the colors in the color bucket, and more awesome pro features!

**[Learn more, Memberships starting at \\$2.50/m!](#)**

**Follow me  
on Twitter!**

@ConvertingColor