

Converting Colors

Hex(D6988D)

Have a look what the booklet for
Hex(D6988D) contains.

Hex(D6988D)	3
<i>Conversions</i>	4
<i>Details</i>	6
<i>Harmonies</i>	11
<i>Previews</i>	23
<i>Color Blindness Simulation</i>	26
<i>CSS Examples</i>	29

Color

Hex(D6988D)

Conversions

Conversions Part 1

Format	Color
Hex	D6988D
RGB	214, 152, 141
RGB Percent	84%, 60%, 55%
CMY	0.1608, 0.4039, 0.4471
CMYK	0.00, 0.29, 0.34, 0.16
HSL	9°, 47%, 70%
HSV	9°, 34%, 84%
XYZ	43.7675, 38.6757, 30.3577
YIQ	169.2840, 40.4830, 9.7230

Conversions

Conversions Part 2

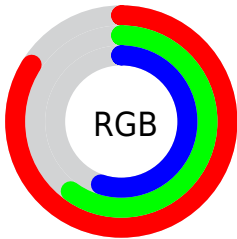
Format	Color
R_{YB}	214, 154, 141
Decimal	14063757
CIE _{Lab}	68.52, 21.82, 15.06
CIE _{LCh}	69, 26.509, 34.618
Yxy	38.6757, 0.3880, 0.3429
Android (android.graphics.Color)	4292253837 (0xFFD6988D)
YUV	169.2840, -13.9440, 39.2159
Hunter-Lab	62.1898, 16.7914, 14.5907

Details

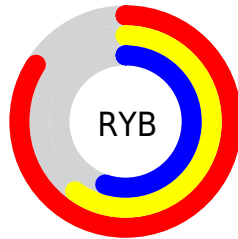
The Hex color **D6988D** is a light color, and the websafe version is hex **CC9999**. A complement of this color would be **8DCBD6**, and the grayscale version is **A9A9A9**.

A 20% lighter version of the original color is **FFCFC3**, and **9E655B** is the 20% darker color. If you saturate the color by 10%, you get **D68678**, and if you desaturate by 10%, it is **D6AAA2**.

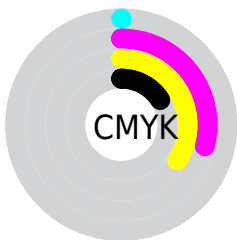
Distribution



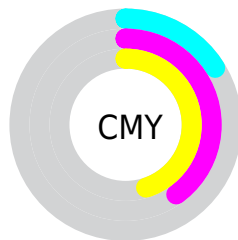
- Red (84%)
- Green (60%)
- Blue (55%)



- Red (84%)
- Yellow (60%)
- Blue (55%)



- Cyan (0%)
- Magenta (29%)
- Yellow (34%)
- Black (16%)



- Cyan (16%)
- Magenta (40%)
- Yellow (45%)

Brightness & Saturation Gradients

These gradients show how the Hex color D6988D changes by changing the brightness by 10 percent. The first figure shows a shift by +10% for each color and the second figure -10%.

Similar to the brightness gradients but the following saturation gradients show a change of the Hex color D6988D by changing the saturation by 10% instead.

 D6988D

 D6988D

FFFFFF

 B97E73

 FFCFC3

 9E655B

 FFEBCF

 824C43

 FFFFFB

 68352D

 4E1E18

 360800

 1D0001

 000000

 D6988D

 D6988D

 D68678

 D6AAA2

 D67462

 D6BCB8

 D6614D

 D6CFCD

 D64F37

 D6E1E3

 D63D22

 D6F3F8

 D62B0D

 D6FFFF

 D62000

Harmonies

Analogous

The Analogous color harmony consists of three colors that are next to each other on the color wheel.



D696A4



D6988D



CA9F7C

Triad

The Triadic color harmony groups three colors that are evenly spaced from another and form a triangle on the color wheel.



D6988D



7FB392



8EA8D6

Complementary

The Complementary color scheme is a pair of colors which are on the opposite of each other on the color wheel.



D6988D



8DCBD6

Split Complementary

Split-complementary colors differ from the complementary color scheme. The scheme consists of three colors, the original color and two neighbors of the complement color.



6EAFD2



D6988D



67B5AA

Square

The Square scheme is like the rectangle color scheme, but the four colors are evenly spaced on the color wheel.



D6988D



9BAE7F



5FB3C1



B0A0CF

Rectangle

The Rectangle color scheme consists of four colors that form a rectangle on the color wheel.



D6988D



BDA478



5FB3C1



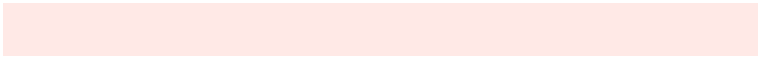
83ABD6

Sweetspot

The Sweet Spot groups the original color and five complimentary colors.



D6988D



FFE9E6



D68DCB



807370



000000



808080

Same Dimension

The Same Dimension uses a secret algorithm to generate beautiful new colors.



D6988D



FFA696



D6BC8D



6B6260



AB1A00



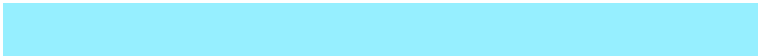
2B0700

Inverse Universe

The Inverse Universe completely reimagines the original color for something new.



8DCBD6



96EFFF



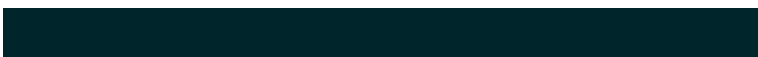
8DA7D6



60696B



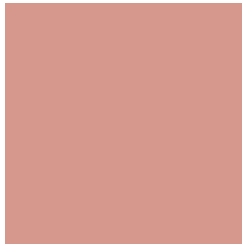
0091AB



00252B

Previews

White Background



This preview shows how the Hex color D6988D looks on a white background.

Color Contrast Check

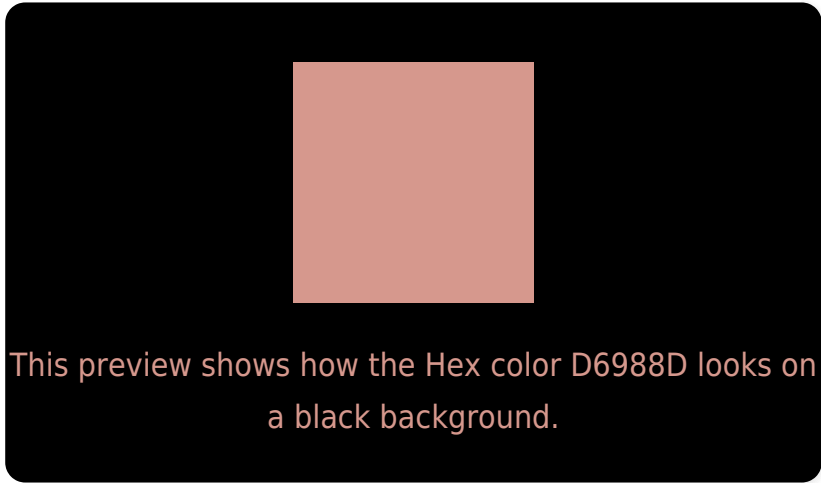
Large Text (above 18pt) WCAG AA × Fail

Any Text WCAG AA × Fail

Large Text (above 18pt) WCAG AAA × Fail

Any Text WCAG AAA × Fail

Black Background



Color Contrast Check

Large Text (above 18pt) WCAG AA ✓ Pass

Any Text WCAG AA ✓ Pass

Large Text (above 18pt) WCAG AAA ✓ Pass

Any Text WCAG AAA ✓ Pass

If you want to check with other color combinations, try the [Color Contrast Checker](#).

Hex D6988D Background



This preview shows how black text looks on a background with the Hex color D6988D.

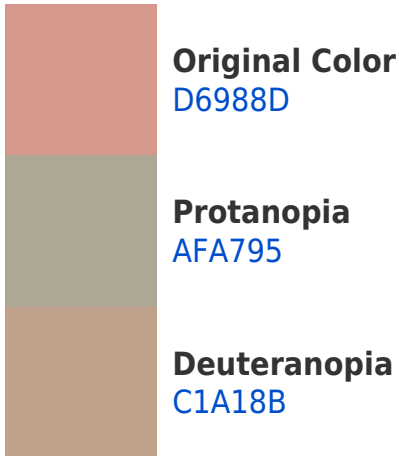


This preview shows how white text looks on a background with the Hex color D6988D.

Color Blindness Simulation

Color vision deficiency is a very complex topic, and I could not describe the different causes any better than Wikipedia does, so if you want to learn more, you should check out their [article about color blindness](#).

Dichromacy





Tritanopia
D895A0

Trichromacy



Original Color
D6988D

Protanomaly
BDA292

Deuteranomaly
C99E8C

Tritanomaly
D79699

Monochromacy



Original Color
D6988D

Achromatopsia
A9A9A9

Achromatomaly
B9A39F

CSS Examples

Text

The CSS property to change the color of the text to Hex D6988D is called "color". The color property can be set on classes, ids or directly on the HTML element.

This example shows how text in the color #D6988D looks like.

```
.text, #text, p{  
    color:#D6988D  
}
```

If you want to add a text shadow in that color use the text-shadow property, you can generate a text shadow directly with our [CSS Text Shadow Generator](#).

Here you see how black text with a 4 pixel #D6988D colored shadow looks like.

```
.shadow{ text-shadow: 4px 4px 2px #D6988D
}
```

Border

The CSS property to change the border of an element to Hex D6988D is called "border". The border property can be set on classes, ids or directly on the HTML element.

This example shows the color as border, it can be applied via the CSS property "border" or "border-color".

```
.border, #border, table{ border:4px solid
#D6988D }
```

If only the border color should be changed use the property `border-color`.

```
.border{ border-color:#D6988D }
```

If you want to add a box shadow in that color use:

Here you see how a box with a 4 pixel #D6988D colored shadow looks like.

```
.boxshadow{ -moz-box-shadow:4px 4px 4px  
4px #D6988D; -webkit-box-shadow:4px 4px  
4px 4px #D6988D; box-shadow:4px 4px 4px  
4px #D6988D }
```

Background

The CSS property to change the background color of an element to Hex D6988D is called "background". The background property can be set on classes, ids or directly on the HTML element.

```
.background, #background, body{  
background:#D6988D }
```

If only the background color should be changed can be used:

```
.background{ background-color:#D6988D }
```

This example shows the color as background, it is applied via the CSS property "background".

To optimize and compress your CSS code, you can use our [online CSS compressor and optimizer](#) based on csstidy. If you want to create a linear or radial gradient as background or border, check our [CSS Gradient Generator](#).

Hey! You found this booklet interesting? Support Converting Colors with the new Membership Option!

The pro membership hides all ads, plus gives you double the colors in the color bucket, and more awesome pro features!

[Learn more, Memberships starting at \\$2.50/m!](#)

**Follow me
on Twitter!**

@ConvertingColor