

Converting Colors

Hex(D69C95)

Have a look what the booklet for
Hex(D69C95) contains.

Hex(D69C95)	3
<i>Conversions</i>	4
<i>Details</i>	6
<i>Harmonies</i>	11
<i>Previews</i>	23
<i>Color Blindness Simulation</i>	26
<i>CSS Examples</i>	29

Color

Hex(D69C95)

Conversions

Conversions Part 1

Format	Color
Hex	D69C95
RGB	214, 156, 149
RGB Percent	84%, 61%, 58%
CMY	0.1608, 0.3882, 0.4157
CMYK	0.00, 0.27, 0.30, 0.16
HSL	6°, 44%, 71%
HSV	6°, 30%, 84%
XYZ	45.0448, 40.2430, 33.8273
YIQ	172.5440, 36.8150, 10.1190

Conversions

Conversions Part 2

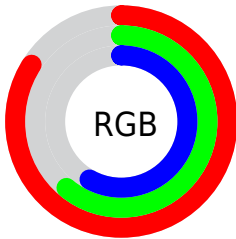
Format	Color
RYB	214, 157, 149
Decimal	14064789
CIELab	69.64, 20.68, 12.20
CIElCh	70, 24.012, 30.544
Yxy	40.2430, 0.3782, 0.3378
Android (android.graphics.Color)	4292254869 (0xFFD69C95)
YUV	172.5440, -11.6072, 36.3569
Hunter-Lab	63.4374, 15.7317, 12.7904

Details

The Hex color **D69C95** is a light color, and the websafe version is hex **CC9999**. A complement of this color would be **95CFD6**, and the grayscale version is **ADADAD**.

A 20% lighter version of the original color is **FFD3CB**, and **9E6862** is the 20% darker color. If you saturate the color by 10%, you get **D68980**, and if you desaturate by 10%, it is **D6AFAA**.

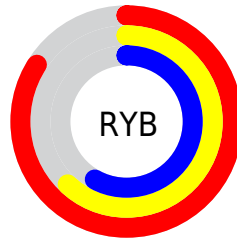
Distribution



Red (84%)

Green (61%)

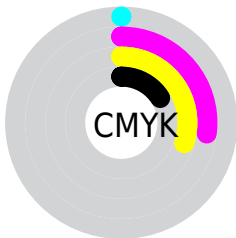
Blue (58%)



Red (84%)

Yellow (62%)

Blue (58%)

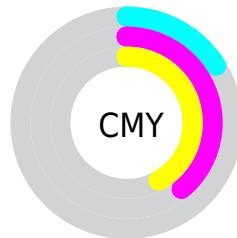


Cyan (0%)

Magenta (27%)

Yellow (30%)

Black (16%)



Cyan (16%)

Magenta (39%)

Yellow (42%)

Brightness & Saturation Gradients

These gradients show how the Hex color D69C95 changes by changing the brightness by 10 percent. The first figure shows a shift by +10% for each color and the second figure -10%.

Similar to the brightness gradients but the following saturation gradients show a change of the Hex color D69C95 by changing the saturation by 10% instead.

 D69C95

 D69C95

FFFFFF

 BA827B

 FFD3CB

 9E6862

 FFEFE7

 83504B

 683834

 4F221F

 360C07

 210001

 000000

 D69C95

 D69C95

 D68980

 D6AFAA

 D6766A

 D6C2C0

 D66355

 D6D5D5

 D6503F

 D6E8EB

 D63D2A

 D6FBFF

 D62915

 D6FFFF

 D61700

Harmonies

Analogous

The Analogous color harmony consists of three colors that are next to each other on the color wheel.



D49AAB



D69C95



CCA285

Triad

The Triadic color harmony groups three colors that are evenly spaced from another and form a triangle on the color wheel.



D69C95



89B494



90ACD5

Complementary

The Complementary color scheme is a pair of colors which are on the opposite of each other on the color wheel.



D69C95



95CFD6

Split Complementary

Split-complementary colors differ from the complementary color scheme. The scheme consists of three colors, the original color and two neighbors of the complement color.



76B2CF



D69C95



74B6AA

Square

The Square scheme is like the rectangle color scheme, but the four colors are evenly spaced on the color wheel.



D69C95



A2AF84



6BB6BF



AEA4D0

Rectangle

The Rectangle color scheme consists of four colors that form a rectangle on the color wheel.



D69C95



C1A67F



6BB6BF



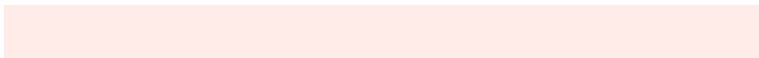
86AED5

Sweetspot

The Sweet Spot groups the original color and five complimentary colors.



D69C95



FFEBE8



D695D0



807371



000000



808080

Same Dimension

The Same Dimension uses a secret algorithm to generate beautiful new colors.



D69C95



FFADA3



D6BC95



6B6260



AB1200



2B0500

Inverse Universe

The Inverse Universe completely reimagines the original color for something new.



95CFD6



A3F5FF



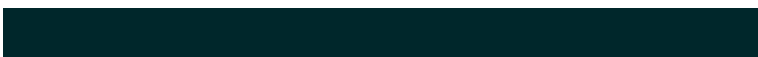
95AFD6



606A6B



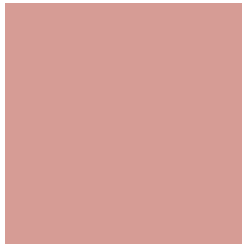
0098AB



00272B

Previews

White Background



This preview shows how the Hex color D69C95 looks on a white background.

Color Contrast Check

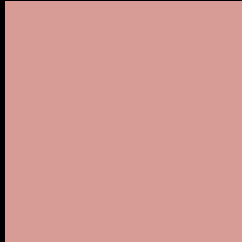
Large Text (above 18pt) WCAG AA × Fail

Any Text WCAG AA × Fail

Large Text (above 18pt) WCAG AAA × Fail

Any Text WCAG AAA × Fail

Black Background



This preview shows how the Hex color D69C95 looks on a black background.

Color Contrast Check

Large Text (above 18pt) WCAG AA ✓ Pass

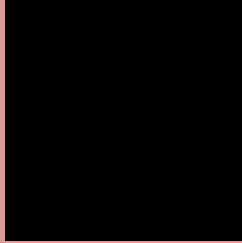
Any Text WCAG AA ✓ Pass

Large Text (above 18pt) WCAG AAA ✓ Pass

Any Text WCAG AAA ✓ Pass

If you want to check with other color combinations, try the [Color Contrast Checker](#).

Hex D69C95 Background



This preview shows how black text looks on a background with the Hex color D69C95.

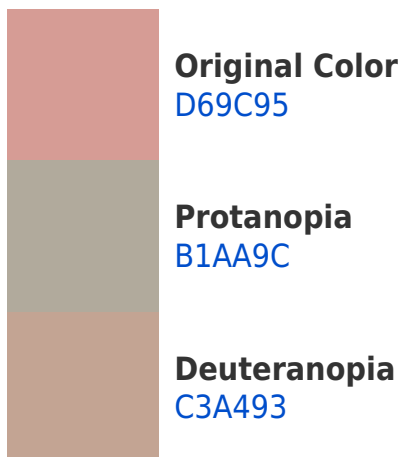


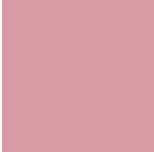
This preview shows how white text looks on a background with the Hex color D69C95.

Color Blindness Simulation

Color vision deficiency is a very complex topic, and I could not describe the different causes any better than Wikipedia does, so if you want to learn more, you should check out their [article about color blindness](#).

Dichromacy





Tritanopia
D89AA5

Trichromacy



Original Color
D69C95

Protanomaly
BEA599

Deuteranomaly
CAA194

Tritanomaly
D79B9F

Monochromacy



Original Color
D69C95

Achromatopsia
ADADAD

Achromatomaly
BCA7A4

CSS Examples

Text

The CSS property to change the color of the text to Hex D69C95 is called "color". The color property can be set on classes, ids or directly on the HTML element.

This example shows how text in the color #D69C95 looks like.

```
.text, #text, p{  
  color:#D69C95  
}
```

If you want to add a text shadow in that color use the text-shadow property, you can generate a text shadow directly with our [CSS Text Shadow Generator](#).

Here you see how black text with a 4 pixel #D69C95 colored shadow looks like.

```
.shadow{ text-shadow: 4px 4px 2px #D69C95
}
```

Border

The CSS property to change the border of an element to Hex D69C95 is called "border". The border property can be set on classes, ids or directly on the HTML element.

This example shows the color as border, it can be applied via the CSS property "border" or "border-color".

```
.border, #border, table{ border:4px solid
#D69C95 }
```

If only the border color should be changed use the property `border-color`.

```
.border{ border-color:#D69C95 }
```

If you want to add a box shadow in that color use:

Here you see how a box with a 4 pixel #D69C95 colored shadow looks like.

```
.boxshadow{ -moz-box-shadow:4px 4px 4px  
4px #D69C95; -webkit-box-shadow:4px 4px  
4px 4px #D69C95; box-shadow:4px 4px 4px  
4px #D69C95 }
```

Background

The CSS property to change the background color of an element to Hex D69C95 is called "background". The background property can be set on classes, ids or directly on the HTML element.

```
.background, #background, body{  
background:#D69C95 }
```

If only the background color should be changed can be used:

```
.background{ background-color:#D69C95 }
```

This example shows the color as background, it is applied via the CSS property "background".

To optimize and compress your CSS code, you can use our [online CSS compressor and optimizer](#) based on csstidy. If you want to create a linear or radial gradient as background or border, check our [CSS Gradient Generator](#).

Hey! You found this booklet interesting? Support Converting Colors with the new Membership Option!

The pro membership hides all ads, plus gives you double the colors in the color bucket, and more awesome pro features!

[Learn more, Memberships starting at \\$2.50/m!](#)

**Follow me
on Twitter!**

@ConvertingColor