

# Converting Colors

Hex(D6A09E)

Have a look what the booklet for  
Hex(D6A09E) contains.

<b>Hex(D6A09E)</b> .....	3
<b><i>Conversions</i></b> .....	4
<b><i>Details</i></b> .....	6
<b><i>Harmonies</i></b> .....	11
<b><i>Previews</i></b> .....	23
<b><i>Color Blindness Simulation</i></b> .....	26
<b><i>CSS Examples</i></b> .....	29

# **Color**

**Hex(D6A09E)**

# Conversions

## Conversions Part 1

Format	Color
Hex	D6A09E
RGB	214, 160, 158
RGB Percent	84%, 63%, 62%
CMY	0.1608, 0.3725, 0.3804
CMYK	0.00, 0.25, 0.26, 0.16
HSL	2°, 41%, 73%
HSV	2°, 26%, 84%
XYZ	46.4739, 41.9064, 37.9870
YIQ	175.9180, 32.8260, 10.8260

# Conversions

## Conversions Part 2

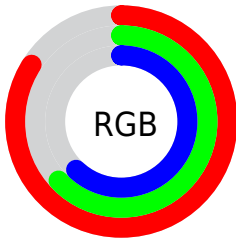
Format	Color
<a href="#">RYB</a>	<a href="#">214, 160, 158</a>
Decimal	<a href="#">14065822</a>
CIELab	<a href="#">70.81, 19.74, 8.87</a>
CIELCh	<a href="#">71, 21.643, 24.196</a>
Yxy	<a href="#">41.9064, 0.3678, 0.3316</a>
Android (android.graphics.Color)	<a href="#">4292255902</a> ( <a href="#">0xFFD6A09E</a> )
YUV	<a href="#">175.9180, -8.8336, 33.3979</a>
Hunter-Lab	<a href="#">64.7351, 14.8602, 10.5228</a>

# Details

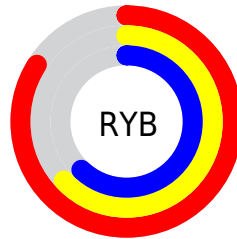
The Hex color **D6A09E** is a light color, and the websafe version is hex **CC9999**. A complement of this color would be **9ED4D6**, and the grayscale version is **B0B0B0**.

A 20% lighter version of the original color is **FFD7D5**, and **9E6C6B** is the 20% darker color. If you saturate the color by 10%, you get **D68B89**, and if you desaturate by 10%, it is **D6B5B3**.

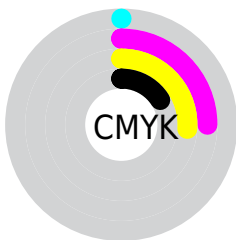
# Distribution



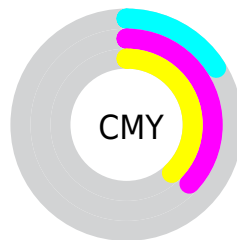
- Red (84%)
- Green (63%)
- Blue (62%)



- Red (84%)
- Yellow (63%)
- Blue (62%)



- Cyan (0%)
- Magenta (25%)
- Yellow (26%)
- Black (16%)



- Cyan (16%)
- Magenta (37%)
- Yellow (38%)

# Brightness & Saturation Gradients

These gradients show how the Hex color D6A09E changes by changing the brightness by 10 percent. The first figure shows a shift by +10% for each color and the second figure -10%.

Similar to the brightness gradients but the following saturation gradients show a change of the Hex color D6A09E by changing the saturation by 10% instead.



 D6A09E

 D6A09E

FFFFFF

 BA8684

 FFD7D5

 9E6C6B

 FFF3F1

 835453

 693C3C

 502626

 371011

 230000

 000000

 D6A09E

 D6A09E

 D68B89

 D6B5B3

 D67773

 D6C9C9

 D6625E

 D6DEDE

 D64D48

 D6F3F4

 D63933

 D6FFFF

 D6241E

 D61008

 D60800

# Harmonies

## Analogous

The Analogous color harmony consists of three colors that are next to each other on the color wheel.



D2A0B2



D6A09E



CFA48E

# Triad

The Triadic color harmony groups three colors that are evenly spaced from another and form a triangle on the color wheel.



D6A09E



95B696



91B0D4

# Complementary

The Complementary color scheme is a pair of colors which are on the opposite of each other on the color wheel.



D6A09E



9ED4D6

# Split Complementary

Split-complementary colors differ from the complementary color scheme. The scheme consists of three colors, the original color and two neighbors of the complement color.



7CB5CD



D6A09E



81B8A9

# Square

The Square scheme is like the rectangle color scheme, but the four colors are evenly spaced on the color wheel.



D6A09E



ABB189



76B8BD



ACAAD1

# Rectangle

The Rectangle color scheme consists of four colors that form a rectangle on the color wheel.



D6A09E



C6A888



76B8BD



89B2D3



# Sweetspot

The Sweet Spot groups the original color and five complimentary colors.



D6A09E



FFEBE8



D69ED4



807373



000000



808080



# Same Dimension

The Same Dimension uses a secret algorithm to generate beautiful new colors.



D6A09E



FFB3B0



D6BC9E



6B6160



AB0600



2B0200



# Inverse Universe

The Inverse Universe completely reimagines the original color for something new.



9ED4D6



B0FCFF



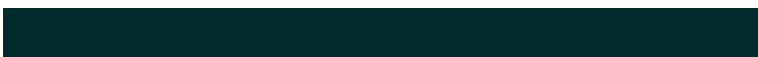
9EB8D6



606B6B



00A5AB

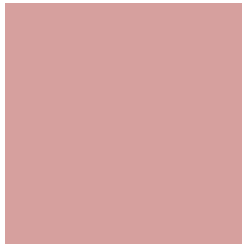


002A2B



# Previews

## White Background



This preview shows how the Hex color D6A09E looks on a white background.

## Color Contrast Check

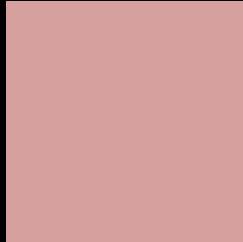
Large Text (above 18pt) WCAG AA × Fail

Any Text WCAG AA × Fail

Large Text (above 18pt) WCAG AAA × Fail

Any Text WCAG AAA × Fail

# Black Background



This preview shows how the Hex color D6A09E looks on a black background.

## Color Contrast Check

Large Text (above 18pt) WCAG AA ✓ Pass

Any Text WCAG AA ✓ Pass

Large Text (above 18pt) WCAG AAA ✓ Pass

Any Text WCAG AAA ✓ Pass

If you want to check with other color combinations, try the [Color Contrast Checker](#).



## Hex D6A09E Background



This preview shows how black text looks on a background with the Hex color D6A09E.

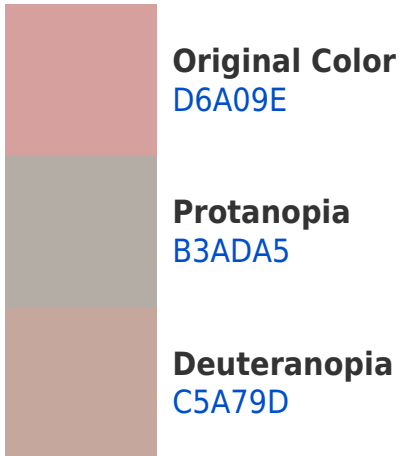


This preview shows how white text looks on a background with the Hex color D6A09E.

# Color Blindness Simulation

Color vision deficiency is a very complex topic, and I could not describe the different causes any better than Wikipedia does, so if you want to learn more, you should check out their [article about color blindness](#).

## Dichromacy





**Tritanopia**  
D79EAA

# Trichromacy



**Original Color**  
D6A09E

**Protanomaly**  
C0A8A2

**Deuteranomaly**  
CBA49D

**Tritanomaly**  
D79FA6

# Monochromacy



**Original Color**  
D6A09E

**Achromatopsia**  
B0B0B0

**Achromatomaly**  
BEAAA9

# CSS Examples

## Text

The CSS property to change the color of the text to Hex D6A09E is called "color". The color property can be set on classes, ids or directly on the HTML element.

This example shows how text in the color #D6A09E looks like.

```
.text, #text, p{  
    color:#D6A09E  
}
```

If you want to add a text shadow in that color use the text-shadow property, you can generate a text shadow directly with our [CSS Text Shadow Generator](#).

Here you see how black text with a 4 pixel #D6A09E colored shadow looks like.

```
.shadow{ text-shadow: 4px 4px 2px #D6A09E
}
```

## Border

The CSS property to change the border of an element to Hex D6A09E is called "border". The border property can be set on classes, ids or directly on the HTML element.

This example shows the color as border, it can be applied via the CSS property "border" or "border-color".

```
.border, #border, table{ border:4px solid
#D6A09E }
```

If only the border color should be changed use the property `border-color`.

```
.border{ border-color:#D6A09E }
```

If you want to add a box shadow in that color use:

Here you see how a box with a 4 pixel #D6A09E colored shadow looks like.

```
.boxshadow{ -moz-box-shadow:4px 4px 4px  
4px #D6A09E; -webkit-box-shadow:4px 4px  
4px 4px #D6A09E; box-shadow:4px 4px 4px  
4px #D6A09E }
```

# Background

The CSS property to change the background color of an element to Hex D6A09E is called "background". The background property can be set on classes, ids or directly on the HTML element.

```
.background, #background, body{  
background:#D6A09E }
```

If only the background color should be changed can be used:

```
.background{ background-color:#D6A09E }
```

This example shows the color as background, it is applied via the CSS property "background".

To optimize and compress your CSS code, you can use our [online CSS compressor and optimizer](#) based on csstidy. If you want to create a linear or radial gradient as background or border, check our [CSS Gradient Generator](#).



Hey! You found this booklet interesting? Support Converting Colors with the new Membership Option!

The pro membership hides all ads, plus gives you double the colors in the color bucket, and more awesome pro features!

**[Learn more, Memberships starting at \\$2.50/m!](#)**

**Follow me  
on Twitter!**

@ConvertingColor